

COURSE SELECTION GRADE 11 ENTERING GRADE 12

For the 2026 – 2027 School Year



PLANNING YOUR NEXT YEAR COURSES

- Read the **Course Selection Handbook**
- Check the school website [Sullivan Heights Website Link](#)
- Plan with **parents, counsellors, teachers and Careers teachers**
- Check post-secondary **websites** directly:
- **www.educationplannerbc.ca** or **www.postsecondarybc.ca**
- Attend **information sessions** at Post-Secondary Institutions as they become available
- Attend the **Course Fair** on **Monday January 12th at lunch**
- Attend **Lunchtime Information Sessions**

GRADUATION PLANNING

GRADE 10	GRADE 11	GRADE 12	<ul style="list-style-type: none"> - ADST/ Fine Arts Course Requirement (gr. 10-12) - Indigenous-Focused Grad Requirement (gr. 10-12) * - 3 Assessments (Numeracy 10, Literacy 10 & Literacy 12) - 30 hours of volunteer/ community engagement completed within CLC 12 <p>Minimum 80 credits needed for graduation</p>
English 10 *	English 11 *	English 12 *	
Math 10	Math 11	Career Life Connections 12	
Science 10	Science 11 or 12	ELECTIVE 12	
Social Studies 10	Social Studies 12 *	ELECTIVE 12	
Physical Education 10	Career Life Education 11	ELECTIVE	
ELECTIVE	ELECTIVE	ELECTIVE	
ELECTIVE	ELECTIVE	ELECTIVE	
ELECTIVE	ELECTIVE	ELECTIVE	
32 Credits	32 Credits	32 Credits	

Graduation Planning Record

Full Name: _____ YOC: _____ Date completed: _____

* Every grade 10, 11 and 12 course is 4 credits each

* Post-Secondary Goal: _____

* 80 credits total are needed to graduate

* A minimum of 16 credits must be completed at the grade 12 level

* at least 4 credits (gr. 10, 11 or 12) must be a Fine Arts/ Applied Skills course

* Potential Schools: _____

* 4 credits of a First Peoples course required (grade 10, 11 or 12) ▲

GRADE 10	Mark	✓	GRADE 11	Mark	✓	GRADE 12	Mark	✓
English 10: ▲			English 11: ▲			English Studies 12: ▲		
Math 10:			Math 11:			Career Life Connections 12:		
Science 10:			Science 11 or 12 (at least ONE done by end of gr. 12):			Grade 12 course:		
Social Studies 10:			Social Studies 12 (done in gr. 11 OR 12): ▲			Grade 12 course:		
Physical Education 10:			Career Life Education 11:			Grade 12 course:		
Elective:			Elective:			Elective:		
Elective:			Elective:			Elective:		
Elective:			Elective:			Elective:		
<i>Summer School, Online Courses or External Credits:</i>			<i>Summer School, Online Courses or External Credits:</i>			<i>Summer School, Online Courses or External Credits:</i>		
TOTAL Credits in grade 10:			TOTAL Credits in grade 11:			TOTAL Credits in grade 12:		

In my graduation year _____, I will have _____ credits and be able to/ not be able to graduate on the _____ program.

AND REMEMBER...

You need to meet **each** of these requirements:

- An **ADST** or **Fine Arts** requirement (grade 10-12)
- A **First Peoples** course requirement (grade 10-12)
- By the end of grade 10, you should have written your **Numeracy 10 assessment and Literacy 10 assessment**
- **30 hours** of volunteer or community engagement hours completed in the same semester as **CLC 12**



▲ Indigenous-Focused Course

Grade 12 Academic Courses for Post-Secondary

Fine Arts/ ADST: At least 1 required from Grades 10-12

Gr 11/12 COURSE OFFERINGS

ENGLISH
ADVANCED PLACEMENT ENGLISH 12 (AP LITERATURE 12 and ENGLISH 12)
CREATIVE WRITING 11
ENGLISH 12
ENGLISH FIRST PEOPLES 12 ▲
LITERARY STUDIES 11
NEW MEDIA 11
EFP LITERARY STUDIES and WRITING 11 ▲
EFP LITERARY STUDIES and NEW MEDIA 11 ▲
CREATIVE WRITING 12 (elective)
LITERARY STUDIES 12 (elective)
PRE-AP LITERARY STUDIES 11
MATHEMATICS
WORKPLACE MATH 11
FOUNDATIONS OF MATH 11
FOUNDATIONS OF MATH 12
PRE-CALCULUS 11
PRE-CALCULUS 12
PRE-CALCULUS 12 & CALCULUS 12
CALCULUS 12
SCIENCES
SCIENCE FOR CITIZENS 11
ENVIRONMENTAL SCIENCE 11
EARTH SCIENCE 11
LIFE SCIENCES 11
CHEMISTRY 11
PHYSICS 11
GEOLOGY 12
ANATOMY & PHYSIOLOGY 12
CHEMISTRY 12
PHYSICS 12

SOCIAL STUDIES
20 TH CENT. WORLD HISTORY 12
BC FIRST PEOPLES 12 ▲
COMPARATIVE CULTURES 12 ▲
CONTEMPORARY INDIGENOUS STUDIES 12
GENOCIDE STUDIES 12
HUMAN GEOGRAPHY 12
LAW STUDIES 12
PHILOSOPHY 12
PHYSICAL GEOGRAPHY 12
POLITICAL STUDIES 12
SOCIAL JUSTICE 12
URBAN STUDIES 12
LANGUAGES
FRENCH 11
FRENCH 12
INTRODUCTORY PUNJABI 11
PUNJABI 11
PUNJABI 12
INTRODUCTORY SPANISH 11
SPANISH 11
SPANISH 12
PHYSICAL EDUCATION
ACTIVE LIVING 11 (PE 11)
ACTIVE LIVING 12 (PE 12)
FITNESS & COND. 11: WEIGHT TRAINING
FITNESS & COND. 12: WEIGHT TRAINING
BUSINESS EDUCATION
ACCOUNTING 11
ACCOUNTING 12
BUS. COMPUTER APPLIC. 12
ECONOMICS 12
ENTREPRENEURSHIP 12
MARKETING & PROMOTION 11

FINE ARTS
ART STUDIO 11: FOUNDATIONS
ART STUDIO 12: FOUNDATIONS
PHOTOGRAPHY 11
PHOTOGRAPHY 12
PHOTOGRAPHY PORTFOLIO DEVELOPMENT 11
PHOTOGRAPHY PORTFOLIO DEVELOPMENT 12
STUDIO ARTS 2D 11: DRAWING and PAINTING
STUDIO ARTS 2D 12: DRAWING and PAINTING 11
STUDIO ARTS 3D 11: CERAMICS & SCULPTURE
STUDIO ARTS 3D 12: CERAMICS & SCULPTURE
BUSINESS EDUCATION COOP
ACCOUNTING 11 or 12, ECONOMICS 12, MARKETING AND PROMOTION 11 or ENTREPRENEURSHIP 12, CAREER LIFE CONNECTIONS 12 and CAPSTONE, WEX 12A
HOME ECONOMICS
CHILD DEVELOPMENT AND CAREGIVING 12
FOOD STUDIES 11
FOOD STUDIES 12
INTERPERSONAL AND FAMILY RELATIONSHIPS 11
PSYCHOLOGY 11
PSYCHOLOGY 12
TEXTILES 11
TEXTILES 12
TOURISM 12
INTRODUCTORY INFO TECH
MEDIA DESIGN 11

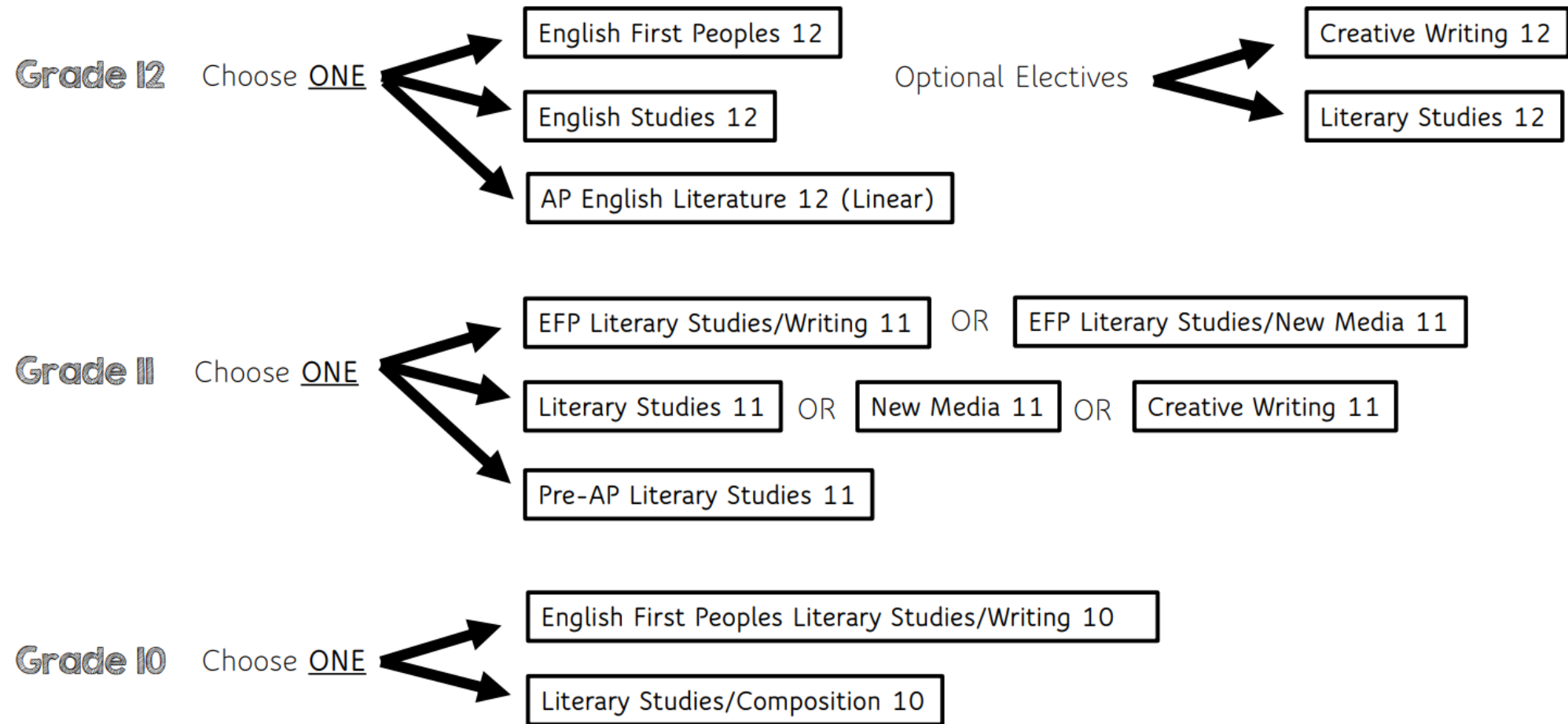
ADVANCED INFO TECH
COMPUTER PROGRAMMING 11
COMPUTER PROGRAMMING 12
DIGITAL COMMUNICATIONS 11: VIDEO PROD & ANIMATION
DIGITAL COMMUNICATIONS 12: VIDEO PROD & ANIMATION
GRAPHIC PRODUCTION 11
GRAPHIC PRODUCTION 12
YEARBOOK 11 (2 COURSES)
YEARBOOK 12 (2 COURSES)
PERFORMING ARTS - MUSIC
CHOIR 11
CHOIR 12
CONCERT BAND 11: BEGINNER
CONCERT BAND 12: BEGINNER
CONCERT BAND 11: INTERMED.
CONCERT BAND 12: INTERMED.
GUITAR 11: BEGINNER
GUITAR 12: BEGINNER
GUITAR 11: INTERMEDIATE
GUITAR 12: INTERMEDIATE
JAZZ BAND 11
JAZZ BAND 12
PERFORMING ARTS - DANCE
DANCE CHOREOGRAPHY 11
DANCE CHOREOGRAPHY 12
DANCE TECH & PERFORMANCE 11: FOUNDATIONS
DANCE TECH & PERFORMANCE 12: FOUNDATIONS
DANCE TECH & PERFORMANCE 11: INTERMEDIATE
DANCE TECH & PERFORMANCE 12: INTERMEDIATE
DANCE TECH & PERFORMANCE 11: ADVANCED
DANCE TECH & PERFORMANCE 12: ADVANCED

PERFORMING ARTS - DRAMA
DIRECTING & SCRIPT DEV. 11
DIRECTING & SCRIPT DEV. 12
DIRECTING & PERFORMANCE LEADERSHIP 11
DIRECTING & PERFORMANCE LEADERSHIP 12
DRAMA 11
DRAMA 12
FILM & TELEVISION 11
FILM & TELEVISION 12
MUSICAL THEATRE 11
MUSICAL THEATRE 12
THEATRE COMPANY 11
THEATRE COMPANY 12
TECHNOLOGY EDUCATION
DRAFTING 11: 3D PRINTING & DESIGN
DRAFTING 12: 3D PRINTING & DESIGN
MACHINING AND WELDING 12: ADVANCED
METALWORK 11
METALWORK 12
METALWORK 11: ART METAL - JEWELLERY MAKING
METALWORK 12: ART METAL - JEWELLERY MAKING
ROBOTICS & ELECTRONICS 11
ROBOTICS & ELECTRONICS 12
TRADE SKILLS EXPLORATION 11
TRADE SKILLS EXPLORATION 12
WOODWORK 11
WOODWORK 12
WORK EXPERIENCE
WORK EXPERIENCE 12
CAREERS
CAREER LIFE EDUCATION 11
CAREER LIFE CONNECTIONS 12

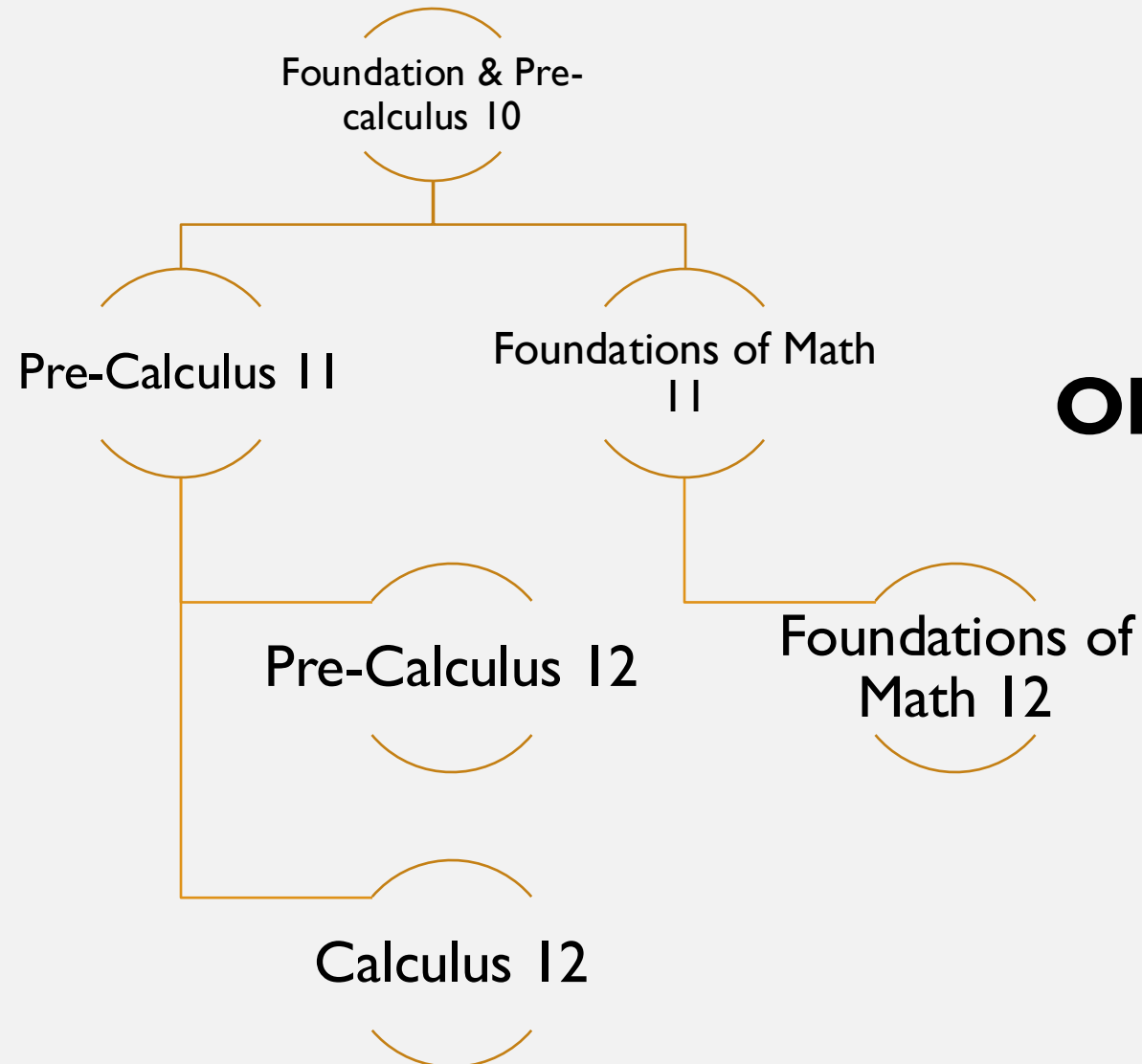
PEER TUTORING
PEER TUTORING 11
PEER TUTORING 12
STUDY
STUDY 12
DISTRICT PROGRAMS
DISTRICT TRADES APPRENTICESHIP PROG.
ITA YOUTH WORK IN TRADES

ENGLISH

English Department Course Map for 2024-2025



MATH



OR

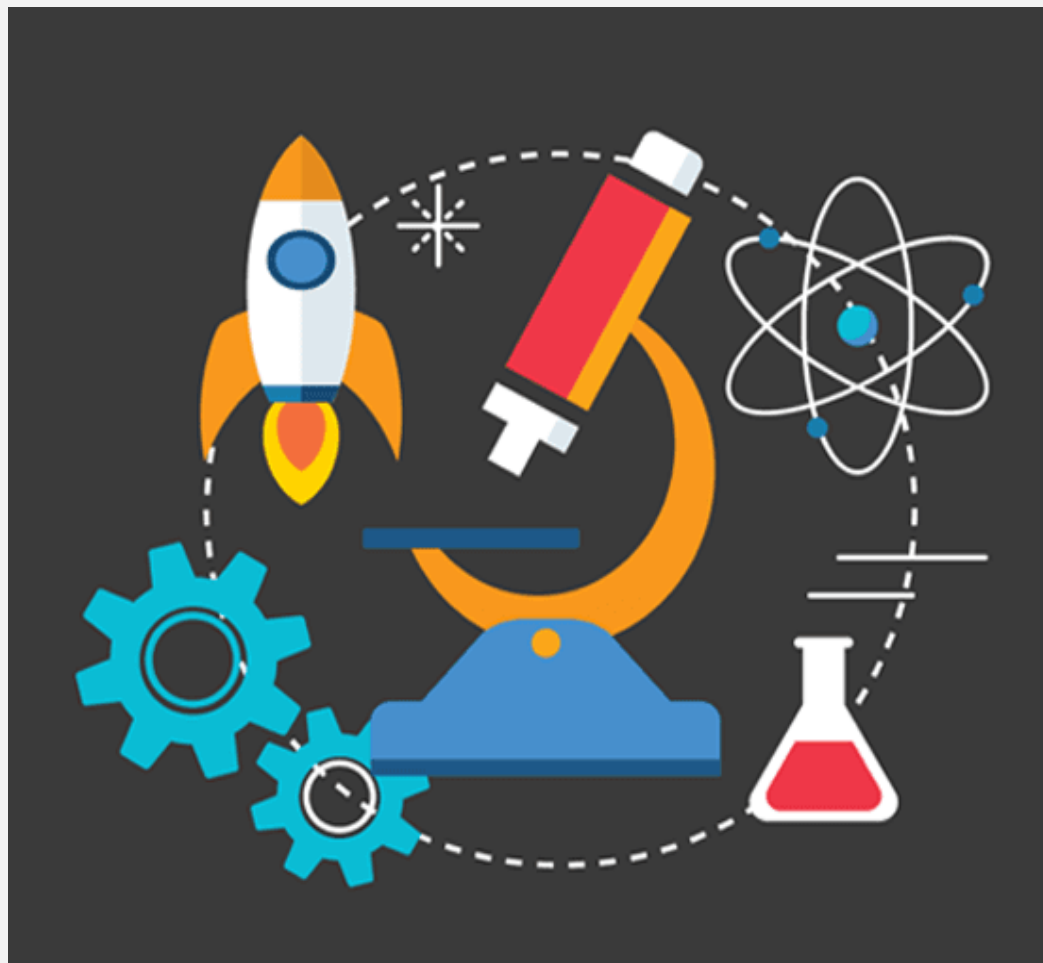
Workplace
Math 10



Workplace
Math 11

SCIENCE

Science 12 Courses



Chemistry 12

This course provides a foundation needed for chemistry at the post secondary level. Topics build from those in chemistry 11 and further explore reactions, dynamic equilibrium, saturated solutions, acid/bases, oxidation and reduction as complementary processes. This demanding course requires daily review on topics and work completion with a strong laboratory component essential for success. A strong foundation in **math** will greatly benefit student success.

Recommended to have a B or higher in Chemistry 11 AND Pre-Calculus 11.

Anatomy & Physiology 12

This course focuses on the human body at the cellular level with the processes that lead to gene expression, organ systems, and interrelationships that maintain homeostasis. Incorporates quite a bit of **chemistry**.

Strong work ethic and lab skills essential with ability to inquire and self-investigate topics. Dissections are a required component of this course. Intended for students who wish to continue Anatomy and Physiology in post-secondary.

Although Life Sciences 11 is not needed prior to this course, it is strongly recommended. Recommended C+ in Life Sciences 11 AND Chemistry 11.

Physics 12

Physics 12 builds upon concepts from physics 11 including vector kinematics, energy and power, equilibrium, circular motion, gravity, and more. Focused emphasis on lab skills, data analysis, scientific inquiry and application of physics.

Strong MATH skills are essential. Recommended B or higher in Physics 11 and Pre-Calculus 11.

Geology 12

An exploration of rocks, minerals, resources, and processes that shape the Earth. Explore the relationships between Earth's materials and resources, Plate Tectonics, and surface processes that shape the planet. This course utilize concept from **Chemistry** and **Physics** as well as **Math** to analyze and organize data into graphs and charts. Detailed observations through hands-on lab and ability to recognize patterns in data and communicate understanding essential.

Although Earth Science 11 is not needed prior to this course, it is recommended to have taken at least one other science 11 and achieved a C+ or higher. A C+ or higher in at least Foundations of Math and Pre-Calculus 10 is recommended.

<p>20th CENTURY HISTORY</p> <p>Go more in depth with the major events of the 20th Century (1901-2000), learning about the complex forces that shaped the world throughout the century. The First and Second World Wars and the Cold War are featured.</p> <p>*** This course is challenging! ***</p>	<p>COMPARATIVE CULTURES</p> <p>Explore how culture is created, and experience the different cultures of the world in all of their diversity! You will experience over 30 different world cultures in this course.</p>
<p>HUMAN GEOGRAPHY</p> <p>Why do people live where they do, how do they affect the environment around them, and why does it all matter? These are some of the big questions you'll explore in Human Geo!</p>	<p>PHYSICAL GEOGRAPHY</p> <p>What forces created the world we see around us? Whether it's landforms, water resources or climate, there are vast, complex and powerful forces that shape our world. In Physical Geo, you get to explore them.</p>
<p>LAW STUDIES</p> <p>Ever wondered how the legal system really works? In Law Studies, you can explore what your rights are as a citizen, how the criminal process works, and pull back the curtain on the system that has inspired countless hit TV shows.</p>	<p>GENOCIDE STUDIES</p> <p>One of the more unfortunate themes in human history is the systematic destruction of certain cultures. Take a look at the psychology behind these actions, how the perpetrators are able to pull them off, and how the victims resist and protect their culture in Genocide Studies.</p>
<p>POLITICAL STUDIES</p> <p>Explore various worldwide political trends and issues, and look at how various systems of government work throughout the world. Look at the different viewpoints on major issues, and examine the logic behind them in Political Studies.</p>	<p>URBAN STUDIES</p> <p>Explore the visible and invisible patterns behind modern cities and how they have developed. Examine the various ways we choose to use space in urban areas, and the ways we are striving to make city living better for everyone.</p>
<p>SOCIAL JUSTICE</p> <p>In Social Justice, we take a close look at some of the major issues of equity and justice in the spotlight around the world. In this highly self-directed course, students are able to focus on the issues that matter to them, and explore them in depth.</p>	<p>PHILOSOPHY</p> <p>Why do we exist? Why do we have certain beliefs? What is the purpose of our imperfections? Are human beings innately good or evil? All these questions and more are examined in Philosophy!</p>
<p>CONTEMPORARY INDIGENOUS STUDIES*</p> <p>Explore the positions of Indigenous peoples throughout the world in this course. What level of rights are these people given? How are they being marginalized? How can we act to respect the rights of those peoples within societies that have developed on top of them and largely without their participation?</p>	<p>BC FIRST PEOPLES*</p> <p>Take a look at the rich variety of cultures, worldviews and languages of the Indigenous people of BC in this course. You will explore how these people interact with colonial society and the Crown. You will also explore how they draw and reinforce their identities from their connection to the land.</p>

CHOOSING ELECTIVES WISELY

- **Research and choose wisely**
- **Consult the Course Selection Handbook**
- **Choose electives based on:**
 - Your interests
 - Your post-secondary goals
 - Speak to your counsellor, parents and teachers who teach the elective courses
- **Choose at least 2 alternates**



SUMMER SCHOOL AND ONLINE COURSES

- Summer School:

- Five week intensive courses offered mornings and afternoons
- Online Registration begins in April (after Spring Break)
- Not recommended to take core academics for the **first time** in Summer school; recommended for upgrading core academics only
- If choosing a course for summer school, do not select the same course in course requests

- Online Courses (SAIL):

- SAIL/ONLINE does not give a spare block at Sullivan Heights
- Still required to take 8 courses at Sullivan Heights
- Check with the PSI for completion requirement date
- Highly recommended to complete all SAIL courses by **Jan. of Grade 12 year**

GENERAL POST-SECONDARY GUIDE

* Check individual post-secondary school websites for **program specific** requirements

Arts:

English 11, Science 11, Math 11

English 12, Socials 12 – different schools will have further grade 12 academic requirements

Applied Science/ Engineering:

English 11, Physics 11, Chemistry 11, Pre-calculus 11

English 12, Physics 12, Chemistry 12, Pre-Calculus 12, Calculus 12 (recommended by some)

Business:

English 11, Science 11, Math 11 (school-specific)

English 12, Math 12 (school-specific)

Fine Arts/ Performing Arts/ Athletics (*Check individual schools*):

Speak with subject teacher and counsellor

GENERAL POST-SECONDARY GUIDE

* Check individual post-secondary school websites for **program specific** requirements

Health Sciences

English 11, Life Science 11, Chemistry 11, Pre-Calculus 11

English 12, Anatomy and Physiology 12, Chemistry 12, Pre-Calculus 12

Nursing:

School-specific; most programs require a Foundations year, while a few programs take direct-entry from high school students

Recommended: Math 11 (Foundations 11 or Pre-Calc. 11), Chemistry 11, Anatomy and Physiology 12

Science:

English 11, Physics 11, Chemistry 11, Pre-Calculus 11

English 12, two of Anatomy and Physiology 12, Chemistry 12, Physics 12, and Pre-Calculus 12

Career/Trades Programs:

Depends on the program

Speak with a Careers teacher(s) and attend Lunchtime session

SOME SPECIFIC PSI ADMISSION REQUIREMENTS

- **BCIT:** Program-specific
- **Douglas:** English C
- **KPU:** English C+
- **UFV:** English/ EFP 12 + 2 approved academic courses
- **UVIC:** English/ EFP 12 + 3 approved academic courses
- **SFU:** English/ EFP 12 + 4 approved academic courses
- **UBC:** English/ EFP 12 + 5 approved academic courses



EXAMPLE OF APPROXIMATE ADMISSION AVERAGES FOR UBC

Degree Program	UBC V	UBC O	Degree Program	UBC V	UBC O
Engineering	97	92	Natural Resources	90	-
Science	96	90	Music	90	-
Arts	92	85	Dental Hygiene	92	-
Fine Arts	90	87	Indigenous Land Stewardship	82	-
Media Studies	91	84	Midwifery	87	-
Kinesiology	94	-	International Economics	94	-
Commerce	95	87	Health and Exercise Science	-	87
Food and Nutrition	91	-	Nursing	-	93
Urban Forestry	88	-	Design	95	-
Pharmaceutical Sciences	95	-	Sustainability	-	88

EXAMPLE OF APPROXIMATE ADMISSION AVERAGES (SFU)

- **Arts and Social Sciences: 89%**
- **Business: 91%**
- **Communication Arts and Technology: 89%**
- **Engineering: 93%**
- **Environment: 88%**
- **Health Sciences: 91%**
- **Science: 92%**



EXAMPLE OF APPROXIMATE ADMISSION AVERAGES (UFV)

- **Arts: 76%**

- **Business and Computing: 73%**

- **Sciences: 73%**

- **Applied and Technical Studies (Trades): 67%**

- **Engineering Transfer Program: 85%**

- **Health Sciences: 86%**

- **Kinesiology: 80%**

- **Nursing: 86%**



DISTRICT PARTNERSHIP PROGRAMS & COURSES



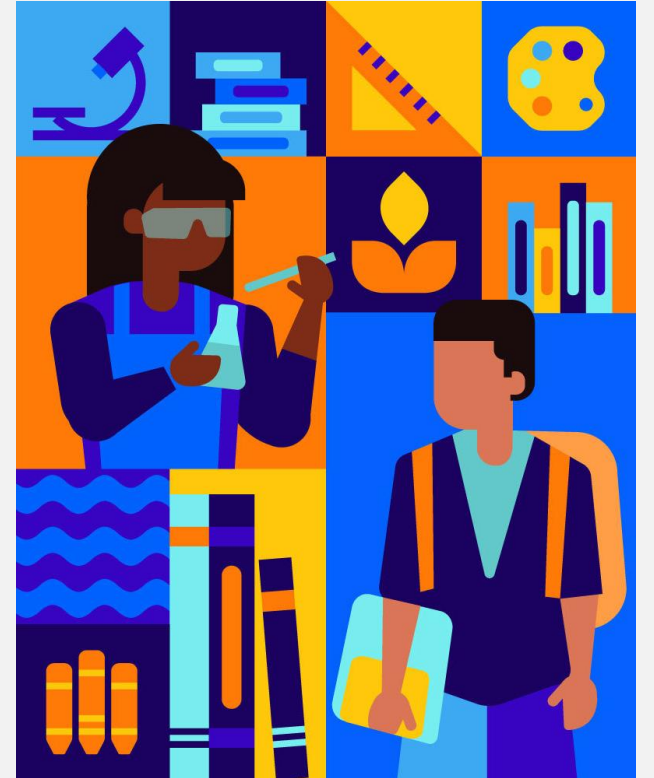
Career Education
Surrey Schools

- *Surrey Schools offers District Partnership Programs & Courses in collaboration with local post-secondary & training providers.*

- Earn **Dual Credit** – high school & post-secondary
- **Surrey Schools** pays the tuition
- Open for **Grade 10 & 11** students to apply
- Students obtain **entry-level training**
- Become **employed/ apprenticed**
- **Applications** available in the **Career Centre** at each secondary school

DISTRICT PARTNERSHIP PROGRAMS

- Automotive Service Technician
- CADD – Drafting
- Carpentry
- Collision & Refinishing
- Construction Craft Worker
- Culinary Arts
- Electrical
- Explorations in Aviation Careers
- Hairstylist
- Heavy Mechanical
- Horticulture
- Metal Fabrication
- Millwright
- Nursing Prep
- Painter
- Piping
- Welding



DUAL CREDIT COURSES



Single course in a specific career area

- Child & Youth Care Counsellor
- Community & Public Safety/ Criminal Justice
- Graphic Design
- Health Science (nursing related)
- Legal Office Procedures

ONLINE APPLICATION

**26-27 SHSS District Partnership
Career Program & Academic Dual
Credit Course Application**



BUSINESS CO-OP

Five Courses in 1 semester:

- Accounting 11 **or** 12 (4 credits), Economics 12 (4 credits), Marketing and Promotions 11 **or** Entrepreneurship 12 (4 credits), Career Life Connections and Capstone (CLC 12) (4 credits) **and** WEX 12A (4 credits)

Requirements:

- Must have excellent school attendance, and be at least 15 years of age and have parent consent
- Must apply during course selection (select Business Co-Op option/ not individual courses)

A few of the many benefits:

- 20-credit program
- Gain connections in the work force for after graduation
- Provides valuable experience for your resume

How to Apply:

- Indicate your interest during the Course Selection
- See Ms.Andersen in B110 for additional information or if you have any questions
- **QR Application in Career Centre or with Ms.Andersen / Ms. Mark (B110)**



Business Co-op Application of Interest



CAREER CENTRE

- **Ms. Rogerson** (rogerson_s@surreyschools.ca)
- Information and applications for all district career programs and all dual credit programs
 - Volunteering
 - Special Career Exploration events
 - Employment and more!



LUNCHTIME SESSIONS

- All sessions in the **Multipurpose Room in the E wing at lunch**, unless otherwise indicated

- **Friday January 16th** Sciences – General Health - Kinesiology
- **Monday January 19th:** Applied Sciences/ Engineering
- **Tuesday January 20th:** Business
- **Wednesday January 21st** Nursing
- **Thursday January 22nd** Arts/Social Science/Humanities
- **Friday January 23rd** Trades/Technology

BEFORE YOUR SESSION

- Use **educationplannerbc.ca**'s "search" bar function to search post-secondary programs to help you decide what courses you should take.
- **Will start promptly at 10:50 am**

IMPORTANT DATES

- **Monday January 12th:**
Course Fair (at lunch)
- **Friday January 16th – Friday January 23rd:**
Lunchtime sessions in the Multipurpose Room
- **Friday January 9th – Sunday January 25th**
Course Request Portal open (Grades 10-11)



Monday January 12th Course Fair (at lunch in the GYM)

COURSE FAIR



TIMETABLE PROCESS

- **Deadline is Sunday January 25th, 2026**
- It is critically important to make smart course requests now as the school timetable is built based on student choices made now.
- Students are placed in classes randomly by MYED – Counsellors do not hand place students into courses
- We are not able to accommodate requests for specific teachers or blocks
- In late August 2026, there will be a final chance to request a course change **ONLY if criteria is met**, but at this point, **changes are likely not possible** due to limited class availability.

COUNSELLOR ALPHAS

Counsellor	E-mail	Alpha
Ms. Watson	watson_m@surreyschools.ca	A - Chat
Ms. Falk	falk_k@surreyschool.ca	Chau - Gupta
Ms. Brown	brown_chanelle@surreyschools.ca	Gur - Leo
Ms. Bains	Bains_n2@surreyschools.ca	Lep - Nage
Ms. Gill	Gill_gurjeevan@surreyschools.ca	Nagi - Sham
Mr. Wohlgemuth	wohlgemuth_s@surreyschools.ca	Shan - Z