



**BOARD OF EDUCATION
of
SCHOOL DISTRICT NO. 36 (SURREY)**

REGULAR BOARD MEETING

REVISED AGENDA

MEETING DATE: 2014-11-06 **TIME:** 7:00 p.m.

MEETING PLACE: School District No. 36 (Surrey)
District Education Centre
Main Boardroom - Room #2020

1. CALL TO ORDER

- (a) "O Canada" – *recording by Semiahmoo Secondary Students*
- (b) Approval of Agenda

2. DELEGATION

3. ACTION ITEMS

- (a) Adoption of Minutes of Regular Board Meeting Held 2014-10-09
- (b) Statement of Operating Fund Expenditures – Three Months Ended 2014-09-30
- (c) Interim Financial Report – Special Purpose Funds – Three Months Ended 2014-09-30
- (d) Approval of Sketch Plans – Rosemary Heights Elementary (Site #189) Addition (*to be distributed*)
- (e) Approval of Sketch Plans – Morgan Elementary (Site #188) Addition (*to be distributed*)
- (f) Approval of Sketch Plans – Clayton North Secondary (Site #215) (*to be distributed*)
- (g) **Capital Project Bylaw No. 126813 – Replacement of One Passenger Bus**

4. INFORMATION & PROPOSALS

Cont'd...

**REGULAR BOARD MEETING
AGENDA**

MEETING DATE: 2014-11-06

TIME: 7:00 p.m.

MEETING PLACE: **School District No. 36 (Surrey)
District Education Centre
Main Boardroom - Room #2020**

- (a) Trustee Reports
- (b) Progress Report – Active Capital Projects
- (c) Report on Business Development Financial Activity for the Twelve (12) Months Ended 2014-06-30
- (d) Class Size and Composition Report
- (e) Update on the New Registration Process – Choice Programs (*verbal*)
- (f) Update on Long Range Education Plan (*verbal*)
- (g) Superintendent' Report (*verbal*)
- (h) Incoming Correspondence

5. FUTURE BUSINESS

- (a) Items for Future Discussion
- (b) Future Meetings

6. QUESTION PERIOD

An informal question period of up to 30 minutes will be provided immediately following the conclusion of the meeting.

7. ADJOURNMENT

Mission Statement

“We engage our students in developing the knowledge, skills and attitudes necessary to build a healthy, democratic and diverse society.”

Board of Education
of
School District No. 36 (Surrey)

THE PURPOSE OF 'QUESTION PERIOD'

The Board asks that you respect the intent of Question Period.

Question Period is intended:

- to enable members of the community to obtain information or clarification from the Board that cannot be provided by staff.
- to ask a question of the **Board**, not individual Trustees.
- to be limited to one question per person and must be presented in writing on the form provided.

Question Period is NOT intended:

- to be used as a political forum.
- for making speeches or bringing forward a delegation.
- to deal with matters that should properly be dealt with through other channels, such as liaison committees.

We again, respectfully request that questioners be mindful of the Board's policy.



**BOARD OF EDUCATION
Of
SCHOOL DISTRICT NO. 36 (SURREY)
Schedule 1 (b)
of the
ADMINISTRATIVE MEMORANDUM
(Regular)**

MEETING DATE: 2014-11-06

TOPIC: APPROVAL OF AGENDA OF REGULAR BOARD MEETING

IT IS RECOMMENDED:

THAT the agenda of the Regular Board meeting be approved as circulated.

Enclosures:



Submitted by:

Approved by:

W.D. Noye, Secretary-Treasurer

Dr. J. Tinney, Superintendent



**BOARD OF EDUCATION
Of
SCHOOL DISTRICT NO. 36 (SURREY)
Schedule 3 (a)
of the
ADMINISTRATIVE MEMORANDUM
(Regular)**

MEETING DATE: 2014-11-06

**TOPIC: ADOPTION OF MINUTES OF REGULAR BOARD MEETING
HELD 2014-10-09**

IT IS RECOMMENDED:

THAT the Minutes of the Regular Board meeting held 2014-10-09 be adopted as circulated.

Enclosures:

Submitted by:

W.D. Noye, Secretary-Treasurer

Approved by:

Dr. J. Tinney, Superintendent

MINUTES OF A REGULAR MEETING OF THE BOARD OF EDUCATION OF SCHOOL DISTRICT NO. 36 (SURREY) HELD IN ROOM #2020 OF THE DISTRICT EDUCATION CENTRE ON THURSDAY, OCTOBER 9th, 2014 at 7:00 P.M.

IN ATTENDANCE

Trustees

S. Wilson, Chairperson
L. Larsen, Vice Chairperson
T. Allen
C. Dobie
L. McNally
R. Masi

Staff

J. Tinney, Deputy Superintendent
W. Noye, Secretary-Treasurer
R. Ryan, Deputy Superintendent
K. Botsford, Executive Secretary

Absent

P. Glass

[1] **CALL TO ORDER**

Chairperson Wilson called the meeting to order at 7:00 p.m.

Presenters & Staff:

In addition to the Table Officers named above, the following staff were in attendance at the meeting:

Patti Dundas, Assistant Secretary-Treasurer; Andrew Holland, Assistant Superintendent; Jennifer Janzen, Administrative Assistant; Kerry Magnus, Associate Director, Business Management Services; Doug Strachan, Manager, Communications Services.

- (a) **"O Canada"**
Trustees, Administration and the audience sang "O Canada" accompanied by a recording by the students of Lena Shaw.

Wayne Noye, Secretary-Treasurer, introduced two new staff members, as per Board Policy. Tracy Blagdon, Manager of Energy Management and Sustainability and Emily Watson, Manager, Demographics and Facilities Planning were welcomed to the District by Trustees.

(b) Approval of Agenda of Regular Board Meeting

Trustee T. Allen requested that item 3 (l) Standing Committee on Finance and Government Services be added to the Agenda.

It was moved by Trustee Allen, seconded by Trustee McNally:

THAT the agenda of the Regular Board Meeting be approved as amended.

CARRIED

[2] DELEGATIONS

No items.

[3] ACTION ITEMS

(a) Adoption of Minutes of Regular Board Meeting Held 2014-09-18

It was moved by Trustee Allen, seconded by Trustee McNally:

THAT the Minutes of the Regular Board meeting held 2014-09-18 be approved as circulated.

CARRIED

(b) Motion, Trustee T. Allen Re: Declaration of November 5, 2014- "Take Our Kids to Work Day"

It was moved by Trustee Allen, seconded by Trustee McNally:

THAT the Board declare November 5, 2014 as "Take Our Kids to Work" day and publicize the event throughout the school district by reminding staff, parents, students and the business community of the benefit to our Grade 9 students afforded by supporting the various activities during this special day.

CARRIED

It was moved by Trustee McNally, seconded by Trustee Allen:

THAT the Motion, Trustee T. Allen re: Declaration of November 5, 2014 – "Take Our Kids to Work Day" be amended to include the words:

THAT the Board direct Administration to make "Take Our Kids to Work Day" an annual event.

CARRIED

The question was called on the amended motion and was CARRIED.

(c) 2013/2014 Audited Financial Statements

It was moved by Trustee Allen, seconded by Trustee Larsen:

THAT the Financial Statements for the fiscal year ended 2014-06-30 be approved.

CARRIED

(d) Capital Project Bylaw No. 116146

It was moved by Trustee McNally, seconded by Trustee Allen:

THAT Capital Project Bylaw No. 116146 be given three (3) readings at this meeting.

CARRIED

It was moved by Trustee Dobie, seconded by Trustee Larsen:

THAT Capital Project Bylaw no. 116146 be approved as read a first time.

CARRIED

It was moved by Trustee Allen, seconded by Trustee McNally:

THAT Capital Project Bylaw no. 116146 be approved as read a second time.

CARRIED

It was moved by Trustee Larsen, seconded by Trustee Allen:

THAT Capital Project Bylaw no. 116146 be approved as read a third time and finally adopted.

CARRIED

(e) Capital Project Bylaw No. 116119 Rosemary Heights Elementary (Site # 189) Addition Morgan Elementary (Site #188) Addition

It was moved by Trustee McNally, seconded by Trustee Allen:

THAT Capital Project Bylaw No. 116119 be given three (3) readings at this meeting.

CARRIED

It was moved by Trustee Larsen, seconded by Trustee McNally:

THAT Capital Project Bylaw no. 116119 be approved as read a first time.

CARRIED

It was moved by Trustee Dobie, seconded by Trustee Larsen:

THAT Capital Project Bylaw no. 116119 be approved as read a second time.

CARRIED

It was moved by Trustee Dobie, seconded by Trustee McNally:

THAT Capital Project Bylaw no. 116119 be approved as read a third time and finally adopted.

CARRIED

(f) Capital Project Amendment Bylaw No. 115265-3

It was moved by Trustee Dobie, seconded by Trustee McNally:

THAT Capital Project Amendment Bylaw No. 115265-3 be given three (3) readings at this meeting.

CARRIED

It was moved by Trustee Dobie seconded by Trustee McNally:

THAT Capital Project Amendment Bylaw no. 115265-3 be approved as read a first time.

CARRIED

It was moved by Trustee Larsen, seconded by Trustee Allen:

THAT Capital Project Amendment Bylaw no. 115265-3 be approved as read a second time.

CARRIED

It was moved by Trustee McNally, seconded by Trustee Larsen:

THAT Capital Project Amendment Bylaw no. 115265-3 be approved as read a third time and finally adopted.

CARRIED

(g) Approval of Sketch Plans: Adams Road Elementary (Site #153) Addition

It was moved by Trustee Allen, seconded by Trustee McNally:

THAT the sketch plans for the construction of an addition to Adams Road Elementary (Site #153), located at 18228 – 68 Avenue, be approved as presented and the architect KMBR architects Planners Inc. be instructed to proceed with the remaining stages of the project.

CARRIED

(h) Amendment to School Calendar 2014-15

It was moved by Trustee Larsen, seconded by Trustee Allen:

THAT the Board approve the September 22, 2014 non-instructional day be rescheduled to Friday, January 23, 2015.

CARRIED

(i) Kilometrage Reimbursement Rate

It was moved by Trustee McNally, seconded by Trustee Larsen:

THAT the Board raise the kilometrage reimbursement rate to \$0.54 per km., effective 2014-09-01.

CARRIED

(j) Motion: Trustee L. Larsen – Safe and Caring Schools

It was moved by Trustee Larsen, seconded by Trustee McNally:

THAT staff reconvene the committee to discuss how to move forward in a timely manner; and

THAT staff report back to the Board no later than December, 2014 a general timetable for the implementation of education and training.

CARRIED

(k) Response to Delegation: Punjabi Language Program, Chimney Hill Parents

It was moved by Trustee Larsen, seconded by Trustee Allen:

THAT the Board accept the letter dated 2014-10-07 from Dr. Jordan Tinney to Dr. K. Sekhon and Mr. K. Taggar as the formal response on behalf of the Board to the Delegation: Punjabi Language, Chimney Hill Parents.

CARRIED

(I) Select Standing Committee on Report

Dr. Tinney, Superintendent, summarized the written submission, prepared for the Select Standing Committee on Finance and Government Services. The letter highlights the increases to the provincial budget since 2001/2002 of \$23 billion or over 100%, of which Education has received a budget increase of \$0.6 billion or 11%. Increased operating costs, including hydro, benefits, purchasing of carbon offsets etc. have resulting in substantial cuts to the services and programs offered to students. Further, the Board allocates approximately \$4 million from the operating budget to cover the expense of portables, due to the over-crowding of many schools and the lack of capital funding. These funds could be better allocated to fifty teaching positions or programs for students. If the Board is to be successful in their goals, they must be able to rely on adequate and sustainable funding.

It was moved by Trustee McNally, seconded by Trustee Larsen:

THAT the written submission, signed by Chairperson Wilson be submitted to the Select Standing Committee on Finance and Government Services; and

THAT it be publically released as a press release as soon as possible.
CARRIED

[4] INFORMATION & PROPOSALS

(a) Trustee Reports

Trustees reported on their activities since the last Board meeting.

(b) Progress Report Active Capital Projects

Trustees received a progress report regarding active capital projects.

(c) Incoming Correspondence

There were no correspondence items requiring Trustees' attention.

[4] FUTURE BUSINESS

(a) Items for Future Discussion

There were no items.

(b) Future Meetings

Trustees made note of future meetings outlined on the agenda administrative memorandum schedule.

[5] QUESTION PERIOD

An informal question period of up to 30 minutes will be provided immediately following the conclusion of the meeting.

[6] ADJOURNMENT

It was moved by Trustee McNally, seconded by Trustee Allen:

THAT the Regular meeting of the Board be adjourned at 8:05 p.m.
CARRIED

S. Wilson
Chairperson

W. Noye
Secretary-Treasurer

WDN/kb

SECTION 72(3) REPORT

**BOARD OF EDUCATION
of
SCHOOL DISTRICT NO. 36 (SURREY)
REPORT OF IN-CAMERA BOARD MEETING
2014-09-18 "A" MEETING**

Trustees Present:

S. Wilson, Chairperson
L. Larsen, Vice Chairperson
T. Allen
R. Masi
L. McNally
C. Dobie

Decisions Made by the Board Included:

1. Teacher Disciplinary Matter
2. Provincial Collective Agreement

Matters Discussed by the Board Included:

1. External Audit Report – Office of the Auditor General

SECTION 72(3) REPORT

BOARD OF EDUCATION of SCHOOL DISTRICT NO. 36 (SURREY)

REPORT OF IN-CAMERA BOARD MEETING

2014-09-18 "B" MEETING

Trustees Present:

S. Wilson, Chairperson
L. Larsen, Vice Chairperson
T. Allen
C. Dobie
R. Masi
L. McNally

Decisions Made by the Board Included:

1. Adoption of Minutes and Public Records of the In-Camera Board Meetings Held 2014-06-19
2. Personnel Matter
3. Elementary Principal and Vice Principal appointments and assignments
4. Acting Secondary Vice Principal Assignment
5. Kindergarten Student to Remain in Preschool
6. Secondary Student to Attend Day Program
7. Services for Two Special Education Students
8. Property Matters

Matters Discussed by the Board Included:

1. Property Matters
2. Auditor's Annual Report re: Management Controls Letter – Internal Controls and Accounting Procedures.
3. Bargaining Matter



**BOARD OF EDUCATION
of
SCHOOL DISTRICT NO. 36 (SURREY)**

Schedule 3(b)

**of the
ADMINISTRATIVE MEMORANDUM
(Regular)**

MEETING DATE: 2014-11-06

**TOPIC: STATEMENT OF OPERATING FUND EXPENDITURES - THREE
MONTHS ENDED 2014-09-30**

Attached is the Statement of Operating Fund Expenditures for the three (3) months ended 2014-09-30.

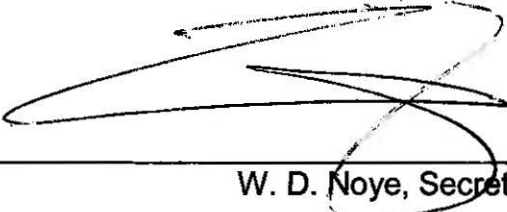
RECOMMENDATION:

THAT the Board accept the Statement of Operating Fund Expenditures for the three (3) months ended 2014-09-30, as presented.

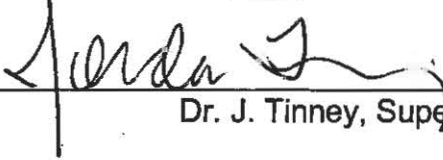
Enclosures:



Submitted by: _____


W. D. Noye, Secretary-Treasurer

Approved by: _____


Dr. J. Tinney, Superintendent

SCHOOL DISTRICT #36 (SURREY)

Statement Of Operating Fund Expenditures
For The Three Months Ended September 30, 2014

<u>Function</u>	<u>Actual</u>	<u>Commitments</u>	<u>Total</u>	<u>2014/2015 Preliminary Budget</u>	<u>Unencumbered Balance</u>	<u>% Available</u>
<i>Instruction</i>	37,672,167	2,224,486	39,896,653	516,745,793	476,849,140	92.28%
<i>District Administration</i>	2,952,623	397,361	3,349,984	11,751,704	8,401,720	71.49%
<i>Operations & Maintenance</i>	14,910,745	7,251,133	22,161,878	62,430,343	40,268,465	64.50%
<i>Transportation & Housing</i>	322,080	4,075,833	4,397,913	5,572,306	1,174,393	21.08%
<i>Debt Service</i>			0		0	0.00%
Total Expenditures	55,857,615	13,948,813	69,806,428	596,500,146	526,693,718	88.30%



**BOARD OF EDUCATION
of
SCHOOL DISTRICT NO. 36 (SURREY)**

Schedule 3(c)

**of the
ADMINISTRATIVE MEMORANDUM
(Regular)**

MEETING DATE: 2014-11-06

**TOPIC: INTERIM FINANCIAL REPORT - SPECIAL PURPOSE FUNDS -
THREE MONTHS ENDED 2014-09-30**

The Regulation pursuant to Board Policy #4203 – *Operating Budget*, calls for financial reporting to the Board with respect to Special Purpose Funds. The Special Purpose Funds report is presented in the same format as utilized for the annual financial statements, which involves the grouping of similar Special Purpose Fund accounts.

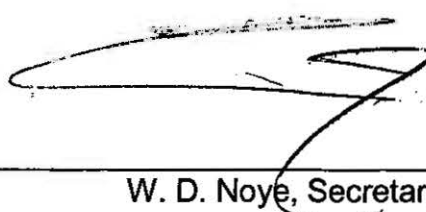
RECOMMENDATION:

THAT the Board accept the Special Purpose Fund Schedules for the three (3) months ended 2014-09-30 as presented.

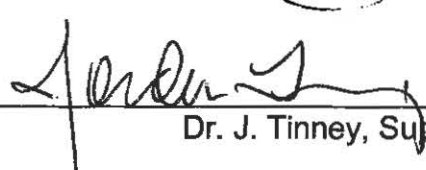
Enclosures:



Submitted by: _____


W. D. Noye, Secretary-Treasurer

Approved by: _____


Dr. J. Tinney, Superintendent

**SCHOOL DISTRICT NO.36 (SURREY)
SPECIAL PURPOSE FUNDS
SUMMARY OF CHANGES
PERIOD ENDED September 30, 2014**

SCHEDULE B1

	MINISTRY OF EDUCATION DESIGNATED	OTHER	SCHOOL GENERATED FUNDS	RELATED ENTITIES	TOTAL
DEFERRED CONTRIBUTIONS					
DEFERRED CONTRIBUTIONS, BEGINNING OF YEAR	74,668	3,525,776	2,775,436		6,375,880
Add: Contributions received					
Provincial Grants - Ministry of Education	2,627,133	1,980,314			4,607,447
Provincial Grants - Other					
Federal Grants					
Other Revenue		353,859	3,849,079		4,202,938
Investment Income		2,265			2,265
Transfer Bylaw to AFG					
	2,627,133	2,336,438	3,849,079		8,812,650
Less: Allocated to Revenue	2,585,086	827,471	3,316,527		6,729,084
Recovered					
District Entered					
DEFERRED CONTRIBUTIONS, END OF YEAR	116,715	5,034,743	3,307,988		8,459,446
REVENUE					
Provincial Grants - Ministry of Education	2,585,086	395,360			2,980,446
Provincial Grants - Other					
Federal Grants					
Other Revenue		429,846	3,316,527		3,746,373
Investment Income		2,265			2,265
Gain (Loss) Equity Investment (Note)					
	2,585,086	827,471	3,316,527		6,729,084
EXPENSE					
Salaries					
Teachers	12,379	156,831			169,210
Principals and Vice-Principals					
Educational Assistants	1,393	13,328			14,721
Support Staff	139,459	216,429			355,888
Other Professionals		81,107			81,107
Substitutes		3,336			3,336
	153,231	471,031			624,262
Employee Benefits	35,661	158,403			194,064
Services and Supplies	2,396,194	190,782	3,316,527		5,903,503
	2,585,086	820,216	3,316,527		6,721,829
NET REVENUE (EXPENSE) BEFORE INTERFUND TRANSFERS		7,255			7,255
INTERFUND TRANSFERS					
Capital Assets Purchased		-7,255			-7,255
Other					
		-7,255			-7,255
NET REVENUE (EXPENSE)					

**SCHOOL DISTRICT NO.36 (SURREY)
SPECIAL PURPOSE FUNDS
CHANGES IN MINISTRY OF EDUCATION DESIGNATED SPECIAL PURPOSE FUNDS
PERIOD ENDED September 30, 2014**

SCHEDULE B2

		207 ANNUAL FACILITY GRANT AZ	250 SPECIAL EDUCATION EQUIPMENT BH	305 DAUGHTERS & SISTERS P.L.E.A. PROGRAM AK	385 ADOLESCENT DAY TREATMENT PROGRAM AG	390 ADOLESCENT PSYCHIATRIC UNIT AD	353 WAYPOINT SUBSTANCE HOUSE AL	TOTAL
DEFERRED CONTRIBUTIONS								
DEFERRED CONTRIBUTIONS, BEGINNING OF YEAR	BEG		45,745		6,140	599	22,184	74,668
Add: Contributions received								
E	Provincial Grants - Ministry of Education	RME 2,563,090		11,568	28,081	14,028	10,366	2,627,133
	Provincial Grants - Other	RBC						
	Federal Grants	RGC						
	Other Revenue	ROT						
	Investment Income	RIN						
	Transfer Bylaw to AFG							
		2,563,090		11,568	28,081	14,028	10,366	2,627,133
Less: Allocated to Revenue		2,563,090	2,309	4,728	7,849	4,140	2,970	2,585,086
Recovered								
DEFERRED CONTRIBUTIONS, END OF YEAR			43,436	6,840	26,372	10,487	29,580	116,715
REVENUE AND EXPENSE								
REVENUE								
	Provincial Grants - Ministry of Education	RME 2,563,090	2,309	4,728	7,849	4,140	2,970	2,585,086
	Provincial Grants - Other	RBC						
	Federal Grants	RGC						
	Other Revenue	ROT						
	### Investment Income	RIN						
		2,563,090	2,309	4,728	7,849	4,140	2,970	2,585,086
EXPENSE								
Salaries								
	Teachers	ETS		3,459	3,563	3,269	2,088	12,379
	Principals and Vice-Principals	EAS						
	Educational Assistants	ESA			1,437	-44		1,393
	Support Staff	ESC	139,459					139,459
	Other Professionals	ESP						
	Substitutes	ESU						
			139,459	3,459	5,000	3,225	2,088	163,231
	Employee Benefits	EEB	30,200	914	2,849	915	783	35,661
	Services and Supplies	ESR	2,393,431	2,309	355		99	2,396,194
			2,563,090	2,309	4,728	7,849	4,140	2,585,086
NET REVENUE (EXPENSE) BEFORE INTERFUND TRANSFERS								
INTERFUND TRANSFERS								
	Capital Assets Purchased	ECA						
	Other (Note)	EIT						
NET REVENUE (EXPENSE)								

**SCHOOL DISTRICT NO.36 (SURREY)
SPECIAL PURPOSE FUNDS
CHANGES IN OTHER TRUST FUNDS
PERIOD ENDED September 30, 2014**

SCHEDULE B3

		WRAPAROUND	SAME PROJECT	COYOTE CREEK BEP	650 DONATIONS	651 PAC CONTRIBUTIONS	TOTAL
		BM	BN	BT	BP/BQ/BR/BS	BW	
DEFERRED CONTRIBUTIONS							
DEFERRED CONTRIBUTIONS, BEGINNING OF YEAR	BEG			39,375	956,091	149,187	3,525,776
Transfer from Operating Surplus June 30, 2012							
Add: Contributions received							
Provincial Grants - Ministry of Education	RME						1,980,314
Provincial Grants - Other	RBC						
Federal Grants	RGC						
Other Revenue	ROT				101,723	-10,000	353,859
Investment Income	RIN				2,265		2,265
					103,988	-10,000	2,336,438
Less: Allocated to Revenue Recovered					178,721	-7,094	827,471
DEFERRED CONTRIBUTIONS, END OF YEAR				39,375	881,358	146,281	5,034,743
REVENUE AND EXPENSE							
REVENUE							
Provincial Grants - Ministry of Education	RME						395,360
Provincial Grants - Other	RBC						
Federal Grants	RGC						
Other Revenue	ROT				176,456	-7,094	429,846
Investment Income	RIN				2,265		2,265
					178,721	-7,094	827,471
EXPENSE							
Salaries							
Teachers	ETS				524		156,831
Principals and Vice-Principals	EAS						
Educational Assistants	ESA						13,328
Support Salaries	ESC						216,429
Other Professionals	ESP						81,107
Substitutes	ESU						3,336
					524		471,031
Employee Benefits	EEB				16		158,403
Services and Supplies	ESR				160,926	2,906	190,782
					161,466	2,906	820,216
NET REVENUE (EXPENSE) BEFORE INTERFUND TRANSFERS					17,255	-10,000	7,255
							7,255
INTERFUND TRANSFERS							
Capital Assets Purchased	ECA				-17,255	10,000	-7,255
Other (Note)	EIT						
					-17,255	10,000	-7,255
NET REVENUE (EXPENSE)							

**BOARD OF EDUCATION
of
SCHOOL DISTRICT NO. 36 (SURREY)**

**Schedule 3(d)
of the**

**ADMINISTRATIVE MEMORANDUM
(Regular)**

MEETING DATE: 2014-11-06

TOPIC: **APPROVAL OF SKETCH PLANS:
ROSEMARY HEIGHTS ELEMENTARY (SITE #189) ADDITION**

Approval of an addition to Rosemary Heights Elementary (Site #189), located at 15516 – 36 Avenue was announced by the Minister of Education on 2014-08-28. The addition will increase nominal capacity from 120K/350E to 160K/350E.

At its Regular Meeting on 2014-09-18, the Board appointed Craven Huston Powers Architects as Project Architect for the addition to Rosemary Heights Elementary (Site #189).

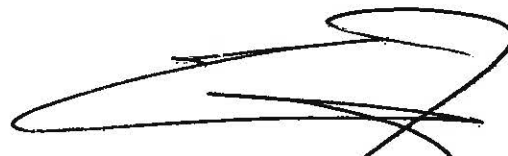
The architect will be in attendance to present the sketch plans to the Board.

IT IS RECOMMENDED:

THAT the sketch plans for the construction of an addition to Rosemary Heights Elementary (Site #189), located at 15516 – 36 Avenue, be approved as presented and the architect Craven Huston Powers Architects be instructed to proceed with the remaining stages of the project.

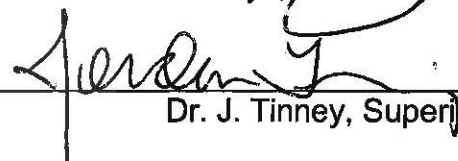
Enclosures:

Submitted by:



W.D. Noye, Secretary-Treasurer

Approved by:



Dr. J. Tinney, Superintendent

**BOARD OF EDUCATION
of
SCHOOL DISTRICT NO. 36 (SURREY)**

**Schedule 3(e)
of the**

**ADMINISTRATIVE MEMORANDUM
(Regular)**

MEETING DATE: 2014-11-06

TOPIC: **APPROVAL OF SKETCH PLANS:
MORGAN ELEMENTARY (SITE #188) ADDITION**

Approval of an addition to Morgan Elementary (Site #188), located at 3366 – 156A Street was announced by the Minister of Education on 2014-08-28. The addition will increase nominal capacity from 60K/275E to 100K/325E.

At its Regular Meeting on 2014-09-18, the Board appointed Craven Huston Powers Architects as Project Architect for the addition to Morgan Elementary (Site #188).

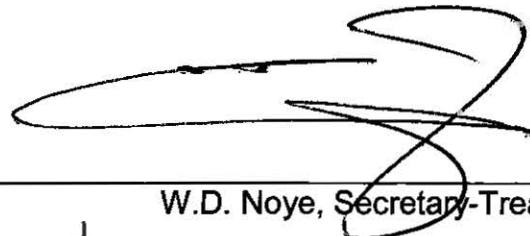
The architect will be in attendance to present the sketch plans to the Board.

IT IS RECOMMENDED:

THAT the sketch plans for the construction of an addition Morgan Elementary (Site #188), located at 3366 – 156A Street, be approved as presented and the architect Craven Huston Powers Architects be instructed to proceed with the remaining stages of the project.

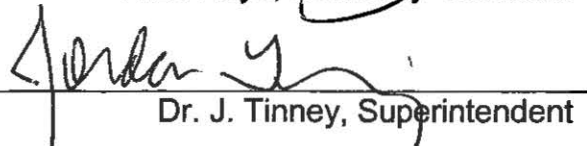
Enclosures:

Submitted by:



W.D. Noye, Secretary-Treasurer

Approved by:



Dr. J. Tinney, Superintendent

**BOARD OF EDUCATION
of
SCHOOL DISTRICT NO. 36 (SURREY)**

**Schedule 3(f)
of the**

**ADMINISTRATIVE MEMORANDUM
(Regular)**

MEETING DATE: 2014-11-06

TOPIC: **APPROVAL OF SKETCH PLANS:
CLAYTON NORTH SECONDARY (SITE #215) NEW SCHOOL**

Approval of a new school Clayton North Secondary (Site #215), 7278 – 184 Street was announced by the Minister of Education on 2014-08-28. The new school will have a capacity of 1500 nominal capacity.

At its Regular Meeting on 2013-02-28, the Board appointed KMBR Architects & Planners Inc. as Project Architect for this new school Clayton North Secondary (Site #215).

The architect will be in attendance to present the sketch plans to the Board.

IT IS RECOMMENDED:

THAT the sketch plans for a new school Clayton North Secondary (Site #215), 7278 – 184 Street, be approved as presented and the architect KMBR Architects & Planners Inc. be instructed to proceed with the remaining stages of the project.

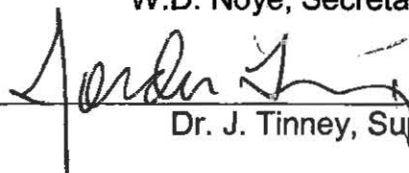
Enclosures:

Submitted by:



W.D. Noye, Secretary-Treasurer

Approved by:



Dr. J. Tinney, Superintendent

**BOARD OF EDUCATION
of
SCHOOL DISTRICT NO. 36 (SURREY)**

**Schedule 3(g)
of the**

**ADMINISTRATIVE MEMORANDUM
(Regular)**

MEETING DATE: 2014-11-06

TOPIC: **CAPITAL PROJECT BYLAW NO. 126813 – REPLACEMENT OF
ONE PASSENGER BUS**

The Ministry of Education has approved school bus replacement allocations in the maximum amount of \$116,472.33 as follows:

<u>Project No.</u>	<u>Project Description</u>	<u>Amount</u>
126813	Replacement of one passenger buses	<u>\$116,472.33</u>

IT IS RECOMMENDED:


THAT, Capital Project Bylaw No. 126813 be given three (3) readings at this meeting (vote must be unanimous).

BYLAW RECOMMENDATION:

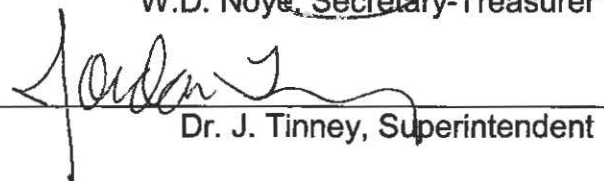
1. THAT Capital Project Bylaw No. 126813 be approved as read a first time.
2. THAT Capital Project Bylaw No. 126813 be approved as read a second time.
3. THAT Capital Project Bylaw No. 126813 be approved as read a third time and finally adopted.

Enclosures: Submitted by:

Approved by:



W.D. Noye, Secretary-Treasurer



Dr. J. Tinney, Superintendent

**CAPITAL BYLAW NO. 126813
REPLACEMENT OF ONE PASSENGER BUS**

A BYLAW by the Board of Education of School District No. 36 (Surrey) (hereinafter called the "Board") to adopt a Capital Project of the Board pursuant to Sections 143 (2) and 144 (1) of the *School Act*, R.S.B.C. 1996, c. 412 as amended from time to time (called the "Act").

WHEREAS in accordance with provisions of the *School Act* the Minister of Education (hereinafter called the "Minister") has approved Capital Project No. 126813.

NOW THEREFORE the Board agrees to the following:

- (a) upon approval to proceed, commence the Project and proceed diligently and use its best efforts to complete the Project substantially as directed by the Minister;
- (b) observe and comply with any rule, policy or regulation of the Minister as may be applicable to the Board or the Project; and,
- (c) maintain proper books of account, and other information and documents with respect to the affairs of the Project, as may be prescribed by the Minister.

NOW THEREFORE the Board enacts as follows:

1. The Capital Bylaw of the Board approved by the Minister and specifying a maximum expenditure of \$116,472.33 for Project No. 126813 is hereby adopted.
2. This Bylaw may be cited as School District No.36 (Surrey) Capital Bylaw No. 126813.

READ A FIRST TIME THE 6TH DAY OF NOVEMBER, 2014;
READ A SECOND TIME THE 6TH DAY OF NOVEMBER, 2014;
READ A THIRD TIME, PASSED AND ADOPTED THE 6TH DAY OF NOVEMBER, 2014.

CORPORATE SEAL

Board Chair

Secretary-Treasurer

I HEREBY CERTIFY this to be a true and original School District N No.36 (Surrey) Capital Bylaw No. 126813 adopted by the Board the 6th day of November, 2014.

Secretary-Treasurer

**BOARD OF EDUCATION
of
SCHOOL DISTRICT NO. 36 (SURREY)**

**Schedule 4(b)
of the**

**ADMINISTRATIVE MEMORANDUM
(Regular)**


MEETING DATE: 2014-11-06

TOPIC: **PROGRESS REPORT – ACTIVE CAPITAL PROJECTS**

The attached report is submitted in accordance with Board direction given on 1992-02-27.

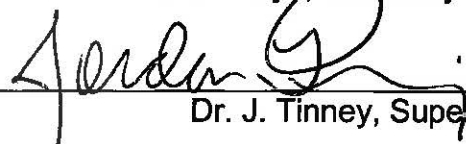
Enclosures:

Submitted by:



W.D. Noye, Secretary-Treasurer

Approved by:



Dr. J. Tinney, Superintendent

BOARD OF EDUCATION OF SCHOOL DISTRICT NO. 36 (SURREY) PROGRESS REPORT - ACTIVE CAPITAL PROJECTS

As of November 6, 2014

Please note that the completion/occupancy dates showing are target dates, based on known circumstances. These dates may well change if they prove to be unrealistic.

Site #001 – Hjorth Road Elementary (Seismic Upgrade)

- Planning Funds were approved by the Ministry of Education in 2005/2006 to determine viability of a structural seismic upgrade;
- 2007-01-09 Bush, Bohlman & Partners appointed Prime Consultant;
- 2007-09-18 Covered Play Area – Completed.

Site #034 – J.T. Brown Elementary (Seismic Upgrade)

- 2007-11-05 Bush, Bohlman & Partners appointed Prime Consultant;
- 2013-06-25 Seismic Project Identification Report (SPIR) approved by Ministry of Education;
- 2013-10-15 Project Definition Report (PDR) submitted to Ministry of Education;
- 2013-11-14 Board approved Capital Project Funding Agreement (CPFA);
- 2013-12-20 Ministry of Education approved CPFA
- 2014-05-13 Bid closing date;
- 2014-06-05 Board approved contract award to Olivit Construction Ltd.;
- 2015-07-31 Anticipated Completion.

Site #059 – Riverdale Elementary (Seismic Upgrade)

- Planning Funds were approved by the Ministry of Education in 2005/2006 to determine viability of a structural seismic upgrade;
- 2007-01-09 Bush, Bohlman & Partners appointed Prime Consultant;
- 2007-09-18 Covered Play Area – Completed;
- Ministry mandated Feasibility Study completed.

Site #140 – Martha Jane Norris Elementary (Addition)

- Planning Funds were approved in the 2003/2006 Capital Plan for an addition to increase capacity from 80K + 425 to 80K + 550 student spaces in year 2 (2004-05);
- Phase I of a 2 phase Ministry mandated Feasibility Study underway;
- 2004-08-24 the Board approved an amendment to the Ministry 2004-2008 Five Year Capital Plan approving that the funding year for the addition to Chimney Hill Elementary (from year three 2006/2007 to year one 2004/2005) and the funding year for the addition to Martha Jane Norris (from year one 2004/2005 to year three 2006/2007) be changed.

Cont'd...

Site #153 Adams Road Elementary (Addition)

- 2013-02-14 Board appointed KMBR Architects & Planners Inc. to prepare a Project Definition Report (PDR).
- 2014-08-28 BC Government announced funding;
- 2014-09-18 Board approved Capital Project Funding Agreement (CPFA);
- 2014-09-18 Board appointed KMBR Architects & Planners Inc. as Project Architect;
- 2014-10-09 Board approved Capital Bylaw;
- 2014-10-09 Board approved sketch plans;
- 2014-10-23 Ministry of Education approved CPFA.

Site #177 Grandview Heights Area Secondary (New School)

- 2013-02-14 Board appointed Craven Huston Powers Architects to prepare a Project Definition Report (PDR).

Site #187 Resource and Education Centre (New Facility)

- 2013-10-10 Board appointed Craven Huston Powers Architects as Project Architect;
- 2013-11-14 Board approved sketch plans;
- 2014-02-20 Bid closing date;
- 2014-02-27 Board approved contract award to Olivit Construction Ltd.;
- 2015-08-29 Anticipated completion.

Site #188 Morgan Elementary (Addition)

- 2014-08-28 BC Government announced funding.
- 2014-09-18 Board approved Capital Project Funding Agreement (CPFA);
- 2014-09-18 Board appointed Craven Huston Powers Architects as Project Architect;
- 2014-10-09 Board approved Capital Bylaw;
- 2014-10-23 Ministry of Education approved CPFA.

Site #189 Rosemary Heights Elementary (Addition)

- 2013-02-14 Board appointed Grant + Sinclair Architects to prepare a Project Definition Report (PDR);
- 2014-08-28 BC Government announced funding;
- 2014-09-18 Board approved Capital Project Funding Agreement (CPFA);
- 2014-09-18 Board appointed Craven Huston Powers Architects as Project Architect;
- 2014-10-09 Board approved Capital Bylaw;
- 2014-10-23 Ministry of Education approved CPFA.

Site #215 Clayton North Area Secondary (New School)

- 2013-02-14 Board approved KMBR Architects & Planners Inc to prepare a Project Definition Report (PDR);
- 2013-02-15 BC Government announced project support;
- 2013-02-28 Board appointed KMBR Architects & Planners Inc. as Project Architect;
- 2014-08-28 BC Government announced funding;
- 2014-09-18 Board approved Capital Project Funding Agreement (CPFA);
- 2014-09-18 Board approved Capital Amendment Bylaw – New School;
- 2014-10-09 Board approved Capital Amendment Bylaw (Restricted Capital) – New School;
- 2014-10-23 Ministry of Education approved CPFA.

**BOARD OF EDUCATION
of
SCHOOL DISTRICT NO. 36 (SURREY)**

**Schedule 4 (c)
of the**

**ADMINISTRATIVE MEMORANDUM
(Regular)**

MEETING DATE: 2014-11-06

TOPIC: **REPORT ON BUSINESS DEVELOPMENT FINANCIAL ACTIVITY
FOR THE TWELVE MONTHS ENDED 2014-06-30**

At its 2002-11-28 Regular meeting, the Board adopted the following motion:

“THAT WHEREAS the Board has two (2) policies covering corporate sponsorship: Policy #10800 - *Education, Business, Community Partnerships*, and Policy #10815 – *Business Development*; and

WHEREAS the Board has received reports in the past around the corporate sponsorship activities including the four (4) main categories: filming; foundations and corporate donations; promotional programs; and facility rentals; and

WHEREAS concerns have been expressed to Trustees by parents, staff and community representatives regarding the disbursement of the funds raised through corporate sponsorship activities; and

WHEREAS the Board would like to ensure that clear information is provided to students, parents, staff and the community about the financial rewards and individual school benefits that are realized through corporate sponsorship programs.

THEREFORE BE IT RESOLVED THAT Administration provide quarterly reports to the Board regarding the corporate sponsorship activities in the school district with full disclosure of the funds and the allocation of proceeds realized in these endeavours.”

At its 2005-04-14 meeting, the Board revised this motion, directing staff to provide semi-annual instead of quarterly reports.

In light of the above motion referencing two policies, it is important to note that school district achieves its Business Development revenue through the administration of three policies:

- Policy #10800 – *Education, Business, Community Partnerships*;
- Policy #10805 – *Promotion of External Agencies Through Schools*; and
- Policy #10815 – *Business Development*.

MEETING DATE: 2014-11-06

SCHEDULE: 4 (c)

TOPIC: REPORT ON BUSINESS DEVELOPMENT FINANCIAL ACTIVITY
FOR THE TWELVE MONTHS ENDED 2014-06-30

Staff have prepared the following schedules in relation to the Business Development operations for the six months ended 2014-06-30.

- Revenue, By Project (Schedule A).
- Donations-In-Kind, By Project (Schedule B).
- Net Revenue Distribution to Schools and Facilities (Schedule C).
- Disbursement of Discretionary Funds to Schools (Schedule D)

The overall benefit generated by the Business Development operations for the six month period ended 2014-06-30 is summarized from the attached reports as follows:

	Six Months Ended June 30, 2014	Twelve Months Ended June 30, 2014	Six Months Ended June 30, 2013	Twelve Months Ended June 30, 2013
Funding Sources & Applications	\$	\$	\$	\$
Revenue (Schedule A)	857,385	2,090,908	499,440	1,571,023
Donations-In-Kind Received (Schedule B)	451,599	801,560	546,694	816,236
Net Revenue & Other Benefits	1,308,984	2,967,468	1,046,134	2,387,259
Indirect Salaries & Benefit Expense (1)				
Salaries	77,486	152,620	75,909	151,458
Employee Benefits	16,186	30,248	16,224	29,056
	93,672	182,868	92,133	180,514
Net Overall Benefits Realized (2)	1,215,312	2,709,600	954,001	2,206,745

	Six Months Ended June 30, 2014	Twelve Months Ended June 30, 2014	Six Months Ended June 30, 2013	Twelve Months Ended June 30, 2013
Distribution of Proceeds to Schools & Programs	\$	\$	\$	\$
Net Revenue Distribution (Schedule C)	764,146	1,985,450	585,811	1,821,557
Donation-In-Kind Received (Schedule B)	451,599	801,560	546,694	816,236
Overall Benefits Distributed (3)	1,215,745	2,787,010	1,132,505	2,633,793

Cont'd...

MEETING DATE: 2014-11-06

SCHEDULE: 4 (c)

TOPIC: REPORT ON BUSINESS DEVELOPMENT FINANCIAL
ACTIVITY FOR THE TWELVE MONTHS ENDED 2014-06-30

Business Development operations are defined to include financial activities empowered by Policy #10800 - *Education, Business Community Partnerships*, Policy #10805 - *Promotion of External Agencies Through Schools* and Policy #10815 - *Business Development*. This report does not include fundraising activities conducted by schools and programs.

The above attribution of indirect salaries and employee benefit expenses for the operation of the department does not include a provision for supplies, services and facilities, as they are not considered significant or material in nature to the analysis. Staff costs are allocated to Business Development proportionate to the time that department management has estimated is dedicated to the activity.

Overall Benefits Distributed (3) differs from the *Net Overall Benefit Realized (2)*, as *Indirect Salaries and Benefits Expense (1)*, are not deducted in determining the amount to be distributed in support of schools and/or programs and there are timing differences between when benefits are realized and they are distributed to schools and programs.

IT IS RECOMMENDED:

THAT the Board receive the Report On Business Development Financial Activity for the twelve months ended 2014-06-30, for information.

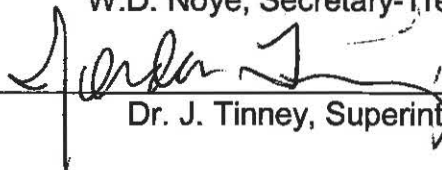
Enclosures:

Submitted by: _____



W.D. Noye, Secretary-Treasurer

Approved by: _____



Dr. J. Tinney, Superintendent

LR/jj

SCHOOL DISTRICT NO 36 (SURREY)
BUSINESS DEVELOPMENT
SCHEDULE OF REVENUE BY PROJECT AND DONOR

PROJECT NAME	2013/14			Jul-Dec	2012/13	
	Jul-Dec	Jan-Jun	TOTAL		Jul-Dec	Jan-Jun
Artists in Education	32,000		\$ 32,000	9,200		\$ 9,200
Autism Speaks			-	19,599		19,599
BC Association of Aboriginal Friendship Centres	58,530		58,530			-
BC Hydro Energy Ambassadors	6,400		6,400			-
BC Gaming Commission		100,000	100,000			-
BC Liquor Distribution Dry Grad			-		19,981	19,981
BC Summer Games Legacy Fund	30,000		30,000			-
Bell Performing Arts Centre		100,000	100,000		3,800	3,800
Bell sponsorship		55,000	55,000			-
Bhuddist Compassionate Relief		19,499	19,499			-
Big Kahuna - Athletic Scholarships		1,500	1,500		1,500	1,500
Bob Labonte Fund (Linda Sanchez fund march 2014)			-	2,685		2,685
Breakfast Clubs of Canada	45,000		45,000	30,000		30,000
Breakfast for Learning	24,900	2,800	27,700	25,400		25,400
Bricks for Kids		700	700			-
Campbell Clan Holdings		500	500			-
Canadian Parents for French			-		12,500	12,500
Career Education Society			-	25,000		25,000
Career Education RCMP Academy			-	1,250	500	1,750
Chevron Fuel Your School Project	200,000		200,000			-
Children's Festival		521	521			-
City of White Rock			-	35,000		35,000
City of Surrey	13,208	3,397	16,605	3,000		3,000
CKNW Orphan's Fund		3,500	3,500			-
Clothing/Textile Bin/Recycling Program	1,575	3,502	5,077	3,289	2,141	5,430
Cmolik Foundation - Scholarships & Lena Gr 5 trips		60,000	60,000		40,000	40,000
Coast Capital Savings (\$15,000 to HJ-rth Playground July 2014)	10,700		10,700	7,500		7,500
Commerical Filming	24,270	9,800	34,070	3,200		3,200
Conservation Education Assistance Fund Rec'd May 2014 Bridg	5,277	10,423	15,700	5,211		5,211
Daytrippers		2,000	2,000	9,091		9,091
DEC Bottle Recycling			-	137	159	296
Distribution of Materials	18,403	16,877	35,279	9,108	19,116	28,224
DP World Vancouver			-		100	100
Ed Com Revenue	4,357	2,121	6,478	5,612	4,623	10,235
Elem. Vending - Fraser Valley Vending	156	66	222	248	308	556
Elem Vending - Pepsi	2,944	5,342	8,286	3,792	8,650	12,442
Envision Jazz Festival - Envision	12,000	12,000	24,000	12,000	4,000	16,000
Envision Jazz Festival - Artinity, Kwantlen, L&M, Matterhorn, Tom Lee, VCC		4,100	4,100	500		500
Equipment Rental/Purchase	10,728		10,728	8,698		8,698
Fraser Valley Secondary Athletics			-		710	710
Future Shop - BC Summer Games Photography Project			-	60,000		60,000
G&F Financial Corp			-	5,900		5,900
George Weston Ltd.		17,500	17,500			-
Goodlife Kids Foundation		10,000	10,000			-
Guildford Town Centre			-		750	750
Hartford Marketing			-		14,000	14,000
Heart and Stroke Foundation - Jump Rope for Heart			-		14,253	14,253
IR3 Program - Government of Canada Justice Dept			-	41,672		41,672
Indigo Love of Reading (WE Kinvig \$65,000, Cedar Hills \$95,000, James Ardiel \$9900)		9,632	9,632		6,332	6,332
Individual Donations	3,751	29,421	33,172	4,300	4,025	8,325
Industry Training Authority		8,000	8,000		5,000	5,000
J E Binding Enterprises		300	300			-
Jardine Pacific Research Inc		366	366			-
Jumpstart Academy - Candian Tire, Ministry of Sport	243,651	45,731	289,382	155,968	59,800	215,768
KaBoom (July 2014 \$100,000)			-			-
Kevington Building Corp	10,581		10,581			-
Kids Plus Accident Insurance		1,132	1,132			-
Kiwanis Club	2,500		2,500			-
Konica Minolta		9,856	9,856	6,664	9,184	15,848
Kwantlen Polytechnic University		300	300			-
Lifesaving Society		3,443	3,443			-
Lighthouse Road Prod. Ltd.			-		400	400
Liquor Distribution Branch		24,743	24,743			-
Lions Club of North Surrey		600	600			-
Lister Litner Schlifer Memorial Scholarship	83	250	333		134	-
Lottery	10,015	9,351	19,366	6,690	14,165	20,855
Lunch Program	2,315		2,315	5,100	10,634	15,734
Metro Vancouver Urban Aboriginal	79,744	7,974	87,718		71,769	71,769
Mountain Equipment Co-op			-		10,000	10,000

SCHOOL DISTRICT NO 36 (SURREY)
BUSINESS DEVELOPMENT
SCHEDULE OF REVENUE BY PROJECT AND DONOR

PROJECT NAME	2013/14			2012/13		
	Jul-Dec	Jan-Jun	TOTAL	Jul-Dec	Jan-Jun	TOTAL
MusiCounts			-	10,000		10,000
NEC			-	8,390		8,390
North Surrey Lion's Club	10,000	8,000	18,000			-
Pacificsport		11,000	11,000			-
Pepsi			-	3,507		3,507
Pepsi - Fit Kid			-		4,000	4,000
Peninsula Arts Foundation	1,000		1,000	1,000		1,000
Play On - Canadian Tire Jumpstart and Ministry of Sport	20,000	7,000	27,000		23,000	23,000
Province of British Columbia		40,000	40,000			-
RBC Foundation - Roots, DREAM, Connect, PAWS	126,000		126,000	36,000		36,000
RBC Foundation - Wicket Cricket	7,500		7,500	7,500		7,500
RBC Foundation - After School Programs		40,000	40,000	46,000		46,000
RBC Foundation		500	500	40,000		40,000
Rona - Home Improvement Retail Program			-	15,000		15,000
Rogers Rooftop Lease	8,325	1,850	10,175		3,332	3,332
Rotary Club of Surrey Newton			-		13,500	13,500
School Community Connections			-	17,500		17,500
S'Cool Life Fund			-	2,925		2,925
Show Kids You Care	530	2,778	3,308			-
Social Sciences & Humanities Research Council Canada			-	7,000		7,000
Solar BC			-	20,000		20,000
Sport Chek			-	1,000		1,000
Stephanie Cadieux, MLA		1,500	1,500			-
Sticks and Stars and Girls in Action - In Jan 2014, \$25,000 Chevron, \$1	27,000	25,000	52,000	45,000	25,000	70,000
Surrey Arts Council			-		3,000	3,000
Surrey Firefighters Charitable Society		5,000	5,000			-
Take P-Art - RBC Foundation			-	40,000		40,000
T & T Parts, Surrey		300	300			-
TD Friends of the Environment	1,100	4,000	5,100			-
Telus		20,000	20,000	500		500
Tree Canada		3,000	3,000	1,500		1,500
Tzu Chi Foundation	13,391		13,391	29,975	4,000	33,975
Union of British Columbia Municipalities	15,388		15,388			-
United Way - CSP bulk grant	75,000		75,000	150,000		150,000
United Way - YMCA BLAST Program	59,200		59,200	59,200		59,200
University of British Columbia (CIHR)		14,638	14,638		17,503	17,503
Vancity - Floral Design At Risk Program		8,000	8,000	10,000		10,000
Vancouver Chamber Choir		75	75			-
Vancouver Foundation - 12500 for girls program Jan 2014		2,000	2,000			-
Vancouver Sun - Adopt A School Program	15,000	70,500	85,500	8,272	67,572	75,844
Warm Hearts Charitable Foundations	1,000		1,000			-
White Rock Renegades			-	500		500
World Wildlife Federation			-	5,000		5,000
YMCA		263	263			-
TOTAL	\$ 1,233,523	\$ 857,385	\$ 2,090,908	\$ 1,071,583	\$ 499,440	\$ 1,571,023

SCHOOL DISTRICT NO. 36 (SURREY)
BUSINESS DEVELOPMENT
SCHEDULE OF DONATIONS-IN-KIND, BY PROJECT AND DONOR

DONOR	2013/14			2012/13		
	Jul-Dec	Jan-Jun	TOTAL	Jul-Dec	Jan-Jun	TOTAL
Envision Jazz Festival						
Berklee College of Music - 5 scholarships			\$ -	\$ -	\$ -	\$ -
CKNW			-			-
Comox Valley Youth Music Centre - Scholarship,		900	-		1000	1,000
Douglas College Summer Jazz Intensive -		1000	-		1000	1,000
Envision Financial - brochure, program, design		13000	-		13000	13,000
Five Star Staging & Lighting Productions Inc. -		400	-		500	500
Global Television -		25000	-		25000	25,000
Guildford Town Centre - parking			-			-
Konica Minolta -			-		1000	1,000
Kwantlen University College - Scholarship,			-		500	500
Long & McQuade -		25000	-		25000	25,000
Matterhorn		1100	-		1100	1,100
Northwest Music			-		1100	1,100
Pacific Arts Foundation		350	-		350	350
Peninsula Arts Foundation		350	-		350	350
QSP/World's Finest Chocolates -			-			-
R&R Music - instruments/equipment			-			-
Sage Team & Corporate Wear -		400	-		400	400
Selkirk College - scholarship			-		350	350
Sheraton Vancouver Guildford -			-			-
Signs Now -		1000	-		1000	1,000
The NOW -		10000	-		10000	10,000
Tom Lee Music -		20000	-		20000	20,000
Victoria Conservatory of Music - Scholarship			-			-
White Rock & District Community Arts Council			-			-
Winner's Circle Trophies -		500	-		500	500
	\$ -	\$ 99,000	\$ 99,000	\$ -	\$ 102,150	\$ 102,150

Other

2 in 1 Basketball		2600	\$ 2,600			
4CATS Arts Studio 2hr sessions @ Bridgeview	\$ 800		\$ 800	\$ -	\$ -	\$ -
Aanam Ent- Neighbourhood Art Studios	1,800		1,800			-
Access Music Foundation	5,000		5,000			-
Akhand Paath Committee			-	7,000		-
Allison's Ladies Group		105	105			-
Andrea Lees Focus Fitness	600		600			-
APEGBC		600	600			-
Artistic Edge Dance Co - dance shows		1,000	1,000			-
Artist Response Team		4,250	4,250	8,500		-
Arts Umbrella	11,500	5,000	16,500	1,500		-
Aspire Music, Dance & Fitness		400	400			-
Axis Theatre			-	800		-
Basketball BC			-		3,000	3,000
Bayside Rugby Football Club		2,000	2,000			-
BC Hydro Power Pioneers		300	300			-
BC Lions - Read Write and Road & Energy Champs		3,600	3,600	7,100		-
BC Rugby		500	500			-
BCSPCA	100		100			-
Bell		1,250	1,250			-
Big Brothers - homework/mentoring programs		12,500	12,500	12,500		-
Bike HUB	64,000		64,000			-
Bollywood Hungama		500	500			-
Bordner Ladner Gervais		800	800			-
Breakfast Clubs		10,000	10,000	10,000		-

SCHOOL DISTRICT NO. 36 (SURREY)
BUSINESS DEVELOPMENT
SCHEDULE OF DONATIONS-IN-KIND, BY PROJECT AND DONOR

Bricks 4 Kidz	5,500	1,000	6,500			
Britannia Mines		660	660			
Burns Bog	3,000		3,000		2,500	2,500
Canada Revenue	75		75			
Canadian Telescopes		400	400			
Carolyn Collins - Fitness Equipment			-	4,340		-
Central City Dental Centre	11,401		11,401			
Chateau Chargill - Foundations Graduation			-		1,000	1,000
Chapters/Indigo - Love of Reading	6,000	86,700	92,700	6,750	57,000	57,000
Cinemazoo	600	1,000	1,600			
City of Surrey		1,060	1,060			
Cooper Studios		500	500			
Costco	15,800		15,800	9,000		-
Dancepl3y	1,200		1,200			
Dance West		800				
Dell Lanes			-		672	672
Delta Heat Fastpitch		400	400			
Do What U Luv	500		500			
EJS Fine Arts - Lena Shaw and free programs at their	2,300		2,300			
Elgin Park Band Parents			-		4,700	4,700
Emily Carr University - bursaries	1,000		1,000	1,000		-
Etuve Foods - 4000 meals to summer camps			-	40,000		-
Excel Performance		700	700			
Expressive Arts	500		500			
Fits You Fitness	1,000	1,100	2,100			
Focus Fitness		500	500			
Fortis BC		200	200			
Forzani's - sports equipment			-		1,000	1,000
Fraser River Discovery Centre	1,080		1,080		1,080	1,080
Free Field Trip Program			-		2720	2,720
Free Kicks		2,800	2,800			
FUN Society		200	200			
Gordon Lang - free drama classes to QE			-	2,500		-
Graham Babonau	875		875			
Grand & Toy			-	1,500		-
Growing Chefs			-	2,000		-
Guildford Athletic Club	1,600		1,600	2,700		-
Guildford Lions			-	1,500		-
Gulf Island Film and Television School			-	5,000		-
Guru Nanak Free Kitchen	500		500			
HR McMillan Space Centre			-		750	750
Healing Movements Yoga Ctr		2,000	2,000			
Heidi McCurdy - Soul Choir		600	600			
Individual donor - various items		1,200	1,200			
JLF Enterprises - Exercise Equipment Elgin Park			-	5,150		-
Just for Kicks School of Dance	200		200		1,600	1,600
Jumpstart Academy - partner instruction July-Dec	1,800		1,800	25,467	24,000	24,000
Kevington Building Corp			-			-
Kick It Martial Arts	2,400	2,000	4,400			
Kids Up Front Foundation	1,600		1,600			
Kwantlen Polytechnic University		70	70			
LaFarge Canada			-		60	60
Learning Disabilities Association	7,000		7,000		15,000	15,000
Living Hope Church			-		1,000	1,000
Lois Peterson			-		250	250
London Drugs (thru Van Sun Adopt-a-School)	2,000		2,000		2,000	2,000
Mad Science	4,000	1,400	5,400			-

SCHOOL DISTRICT NO. 36 (SURREY)
BUSINESS DEVELOPMENT
SCHEDULE OF DONATIONS-IN-KIND, BY PROJECT AND DONOR

Makita		20,000	20,000		20,000	20,000
Mount Seymour		200	200		4,500	4,500
Musiccounts			-		3,000	3,000
Nancy Lynch			-		1,500	1,500
Nav Canada			-		150	150
Olympia Trust	8,380		8,380			
One Pass Ahead Basketball	2,100	1,000	3,100			
Options - 10 bikes x \$100			-			-
Pacific Titans Hockey		700	700			
ParticipACTION			-		1,500	1,500
PAWS	1,800		1,800			
PNE - 16 adult passes x \$35			-		600	600
Port of Vancouver			-		600	600
Poulsbo Sons of Norway			-		800	800
Power Tutoring		800	800			
RCMP	350		350			
Relate Church - hampers, sports day, clothes closet		20,000	20,000		40,000	40,000
Rock Solid Foundation - WITS anti bullying program			-	30,000		-
Rolf Alberti			-		200	200
Rotary Club of Surrey		1,800	1,800			
RBC After School Academy Partners		6,400	6,400	22,435	28,600	28,600
Royal City Soccer Club			-		1,800	1,800
RUB Basketball		3,000	3,000			
Ryan Neufeld		1,200	1,200			
School of Music and Dance	900	1,000	1,900			
Scouts About		500	500			
Sebek's Martial Athletic Club	2,300		2,300			
Sedin Family Foundation	1,500		1,500			
Semiahmoo Music Society		26,554	26,554		29,000	29,000
Seung-ri Black Belt		900	900			
SFU Science Workshops	2,400		2,400			
Sharlene Phoung	100		100			
Shiamak Bollywood Dance		1,500	1,500			
Softball BC		7,500	7,500			
South Asian Arts			-		1,000	1,000
SOS Childrens Villages BC	9,600		9,600			
Southside Community Church		2,800	2,800			
Spiral Dance		800	1,600			
Sportball	5,550	2,100	7,650			
Spring Break DREAM Camp Partners		40,000	40,000		40,000	40,000
Spring Break DREAM Camps - cell phones		2,000	2,000		2,000	2,000
Stagecoach Theatre School		900	900			
Stanley Park Ecology Society	1,100		1,100			
Strawberry Hill PAC		11,000	11,000			
Stuff the Bus - staples	60,000		60,000	27,000		-
Summer Transitions Partners			-		8,000	8,000
Superchefs - camps for SD36 students aug 2013	20,000		20,000		9,000	9,000
Surrey Athelite		2,000	2,000			
Surrey Dodgeball League		500	500			
Surrey Firefighters - snacks/walved false alarm fee - \$100000 will be	75,000		75,000		125,000	125,000
Surrey Taxation Centre	400		400		400	400
Surrey United Soccer		200	200			
Telus Community Connection - Back Packs		20,000	20,000	30,000	4,000	4,000
Tennis BC		1,600	1,600			
Tennis XL		3,800	3,800			
The Other Big Band		1,000	1,000		1,200	1,200
UBC			-		512	512

**SCHOOL DISTRICT NO. 36 (SURREY)
BUSINESS DEVELOPMENT
SCHEDULE OF DONATIONS-IN-KIND, BY PROJECT AND DONOR**

UBC Library				800	800
UBC Symphony Orchestra	200	200			
Ukulele Kids	2,100	2,100			
Vancouver Sun				1,000	1,000
Vancouver Art Gallery - 2 class field trips	500	1,100	1,600		
Vancouver Canucks		6,500	6,500		
Vancouver Writer's Festival				1,000	1,000
Victory Sports Camps	800		800		
White Spot Pipe Band - Rememberance Day Perf		10,250	10,250	5,800	-
Young Actors Project	450		450		
Youth Arts Council of Surrey	1,000		1,000		
	349,961	352,599	\$ 702,560	269,542	444,494
	\$ 349,961	\$ 451,599	\$ 801,560	\$ 269,542	\$ 546,644
				\$ 816,186	

SCHOOL DISTRICT NO. 36 (SURREY)

SCHEDULE C

BUSINESS DEVELOPMENT

SCHEDULE OF NET REVENUE DISTRIBUTION TO SCHOOLS & PROGRAMS

School / Program	2013/14			2012/13		
	Jul-Dec	Jan-Jun	TOTAL	Jul-Dec	Jan-Jun	TOTAL
Schools:						
Adams Road	\$ 204	\$ 74	\$ 278	\$ 151	\$ 119	\$ 270
A.H.P. Matthew Elementary	330	424	754	217	158	374
A.J. McClellan Elementary	204	74	278	151	119	270
Anniedale Traditional Elementary	-	-	-	-	-	-
Bayridge Elementary	418	133	552	220	142	362
Bear Creek Elementary	40,553	146	40,699	1,574	1,428	3,002
Beaver Creek Elementary	204	74	278	151	194	344
Berkshire Park Elementary	204	74	278	151	119	270
Betty Huff Elementary	269	74	343	191	2,156	2,347
Bonaccord Elementary	322	112	434	212	172	384
Bothwell Elementary	204	74	278	151	119	270
Boundary Park Elementary	401	144	546	221	149	370
Bridgeview Elementary	204	74	278	817	119	936
Brookside Elementary	362	121	483	256	119	375
Cambridge Elementary	204	74	278	151	119	270
Cedar Hills Elementary	204	74	278	1,587	119	1,686
Chantrell Creek Elementary	299	119	419	692	146	838
Chimney Hill Elementary	502	268	770	268	202	470
Cindrich Elementary	237	119	356	219	175	394
City Centre Learning Centre	904	74	978	4,651	119	4,770
Clayton Elementary	204	74	278	151	119	270
Clayton Heights Secondary	2,204	1,797	4,001	1,151	119	1,270
Cloverdale Learning Centre	904	874	1,778	651	119	770
Cloverdale Traditional Elementary	204	74	278	6,051	119	6,170
Coast Meridian Elementary	303	74	377	193	154	347
Colebrook Elementary	204	17,745	17,949	151	119	270
Cougar Creek Elementary	5,211	97	5,308	5,403	139	5,542
Coyote Creek Elementary	367	117	484	303	357	660
Creekside Elementary	523	300	823	214	294	508
Crescent Park Elementary	2,262	3,953	6,216	1,506	156	1,662
Crescent Park Annex	-	-	-	151	-	151
David Brankin Elementary	411	10,085	10,496	497	152	649
Discovery Elementary	-	-	-	-	119	119
Dogwood Elementary	407	128	535	211	242	453
Don Christian Elementary	341	127	468	192	151	343
Dr. F.D. Sinclair Elementary	748	74	823	4,007	664	4,672
Earl Marrott Secondary	2,204	1,318	3,522	2,151	119	2,270
East Clayton Elementary	-	-	-	-	-	119
East Kensington Elementary	204	74	278	151	119	270
Elgin Park Secondary	2,904	1,297	4,201	1,151	119	1,270
Ellendale Elementary	310	106	416	173	141	314
Enver Creek Secondary	2,204	1,297	3,501	1,651	119	1,770
Erma Stephenson Elementary	391	136	527	211	2,012	2,223
Fleetwood Elementary	-	-	-	-	-	119
Fleetwood Park Secondary	2,204	1,297	3,501	4,391	119	4,510
Forsyth Road Elementary	4,602	114	4,715	893	178	1,071
Frank Hurt Secondary	4,929	4,235	9,164	6,936	2,619	9,555
Fraser Heights Secondary	12,204	2,297	14,501	6,151	119	6,270
Fraser Wood Elementary	390	120	510	210	213	423
Frost Road Elementary	307	122	430	213	181	394
George Greenaway Elementary	862	308	1,170	713	418	1,131
Georges Vanier Elementary	1,973	640	2,613	6,034	1,193	7,227
Green Timbers Elementary	5,378	74	5,452	5,233	119	5,352
Guildford Park Secondary	4,708	4,077	8,785	1,151	3,103	4,254
Guildford Park Learning Centre	904	1,032	1,937	651	119	770
H.T. Thrift Elementary	204	74	278	151	119	270
Halls Prairie Elementary	845	74	919	151	119	270
Harold Bishop Elementary	204	74	278	151	119	270
Hazelgrove Elementary	204	74	278	5,151	119	5,270
Henry Bose Elementary	1,771	111	1,882	214	145	359
Hillcrest Elementary	394	3,117	3,511	4,439	162	4,601
Hjorth Road Elementary	3,995	122	4,117	4,949	1,034	5,983
Holly Elementary	5,397	3,772	9,168	961	160	1,121
Hyland Elementary	204	74	278	151	119	270
Invergarry Learning Centre	-	-	-	-	-	-
J.T. Brown Elementary	316	97	413	162	139	301
James Ardiel Elementary	271	74	345	151	119	270
Janice Churchill Elementary	204	74	278	151	119	270
Jessie Lee Elementary	204	74	278	151	119	270

SCHOOL DISTRICT NO. 36 (SURREY)

SCHEDULE C

BUSINESS DEVELOPMENT

SCHEDULE OF NET REVENUE DISTRIBUTION TO SCHOOLS & PROGRAMS

Johnston Heights Secondary	2,787	1,547	4,334	4,790	253	5,043
K.B. Woodward Elementary	33,151	1,674	34,825	1,919	1,153	3,073
Kennedy Trail Elementary	309	126	436	197	141	338
Kirkbride Elementary	293	1,338	1,631	194	156	350
Kwantlen Park Secondary	4,708	3,067	7,775	11,151	3,103	14,254
L.A. Matheson Secondary	4,754	1,297	6,051	1,151	119	1,270
Laronde Elementary	327	120	447	200	146	346
Latimer Road Elementary	370	140	509	264	196	460
Lena Shaw Elementary	1,936	40,101	42,037	1,343	3,173	4,516
Lord Tweedsmuir Secondary	9,504	1,797	11,301	7,651	119	7,770
M.B. Sanford Elementary	4,826	121	4,946	192	157	349
M.J. Norris Elementary	3,304	74	3,378	451	119	570
M.J. Shannon Elementary	1,646	130	1,776	1,957	3,670	5,626
Maple Green Elementary	362	123	485	186	162	348
Martha Currie Elementary	506	121	627	303	169	472
McLeod Road Elementary	204	79	283	151	119	270
Morgan Elementary	1,399	74	1,473	3,517	151	3,668
Mountainview Elementary	204	74	278	151	119	270
Newton Elementary	15,659	74	15,733	17,651	119	17,770
Newton Learning Centre			-	651		651
North Ridge Elementary	320	114	433	223	156	379
North Surrey Secondary	2,204	1,297	3,501	1,151	119	1,270
North Surrey Learning Centre	904	374	1,278	651	119	770
Ocean Cliff Elementary	368	125	492	250	164	414
Old Yale Road Elementary	6,004	74	6,078	1,526	1,153	2,679
Pacific Heights Elementary	204	74	278	151	119	270
Panorama Elementary	1,983	112	2,095	213	124	338
Panorama Ridge Secondary	2,204	1,797	4,001	4,401	3,369	7,770
Peace Arch Elementary	204	74	278	151	119	270
Port Kells Elementary	204	74	278	151	119	270
Prince Charles Elementary	21,371	74	21,445	1,633	159	1,792
Princess Margaret Secondary	19,294	3,980	23,274	21,151	16,603	37,754
Queen Elizabeth Secondary	4,708	13,980	18,688	4,626	3,103	7,729
Ray Shepherd Elementary	14,310	757	15,067	151	14,204	14,355
Riverdale Elementary	327	107	435	190	163	353
Rosemary Heights Elementary	204	74	278	151	119	270
Royal Heights Elementary	204	74	278	151	119	270
Semiahmoo Secondary	2,204	1,927	4,131	1,151	119	1,270
Semiahmoo Trail Elementary	314	139	453	226	153	379
Senator Reid Elementary	41,335	417	41,752	191	142	333
Serpentine Heights Elementary	204	74	278	218	119	337
Simon Cunningham Elementary	377	167	544	234	159	393
South Surrey/White Rock Learning Centre	904	374	1,278	651	119	770
South Meridian Elementary	338	134	472	241	167	408
Strawberry Hill Elementary	331	74	405	151	119	270
Sullivan Elementary	204	74	278	151	119	270
Sullivan Heights Secondary	2,204	1,297	3,501	7,651	119	7,770
Sunnyside Elementary	313	98	411	196	119	315
Sunrise Ridge Elementary	348	74	422	207	149	356
Surrey Centre Elementary	204	74	278	360	119	479
Surrey Traditional Elementary	291	74	366	151	119	270
T.E. Scott Elementary	271	74	345	210	160	370
Tamanawis Secondary	2,904	1,297	4,201	1,151	119	1,270
W.E. Kinvig Elementary	93,304	297	93,601	1,305	94,184	95,489
W.F. Davidson Elementary	355	112	467	505	188	693
Walnut Road Elementary	204	74	278	151	119	270
Westerman Elementary	204	74	278	953	119	1,072
White Rock Elementary	359	120	479	4,198	163	4,361
William Watson Elementary	204	74	278	651	119	770
Woodward Hill Elementary	204	177	381	170	119	289
Woodland Park Elementary	1,472		1,472	931	720	1,651
	431,532	146,676	578,208	200,679	173,752	374,431

Programs:

Aboriginal Education	\$	\$	7,974	\$	7,974	\$	\$	-	\$	-
Bell Performing Arts Centre		3,800	100,000		103,800		3,800			3,800
Business Development - Field Trips/Fuel Your School		203,208	32,230		235,438		14,253			14,253
Career Education			16,000		16,000		51,250		5,500	56,750
DPAC		1,417			1,417		1,458			1,458
Education Services		31,500	45,130		76,630		129,549		48,059	177,608
Community Schools		457,057	261,984		719,041		621,468		150,013	771,481
District Facilities Centre - tree canada					0		1,500			1,500

SCHOOL DISTRICT NO. 36 (SURREY)
BUSINESS DEVELOPMENT
SCHEDULE OF NET REVENUE DISTRIBUTION TO SCHOOLS & PROGRAMS

Elementary Sports Association		1,500	1,500			-
Early Learning Initiatives - UW First Steps			0			-
EBCPAC Discretionary Funds*			32,230		160,239	160,239
Food Services	62,790	4,209	66,999	33,570	12,665	46,235
Safe Schools	0	5,000	5,000	44,672		44,672
Student Support Services			0			-
Superintendent's Department	0	43,441	43,441		17,530	17,530
	<u>759,772</u>	<u>517,470</u>	<u>1,277,242</u>	<u>883,467</u>	<u>412,059</u>	<u>1,295,526</u>
SUBTOTAL - DISTRIBUTED	\$ 1,191,304	\$ 664,146	\$ 1,855,450	\$ 1,084,146	\$ 585,811	\$ 1,669,957
ADD GRANTS HELD IN TRUST BY OTHERS:						
BC Firefighters - Gaming Commission Snack Program		100,000	100,000			-
BC Summer Games	30,000		30,000	60,000		60,000
Options - Community Action Initiative						-
SFU - SSHRC AM Grant				7,000		7,000
Surrey Firefighters - Breakfast for Learning				25,400		25,400
YMCA - Jumpstart 2000	2000			59,200		59,200
	<u>30,000</u>	<u>100,000</u>	<u>130,000</u>	<u>151,600</u>	<u>-</u>	<u>151,600</u>
TOTAL DISTRIBUTED	\$ 1,221,304	\$ 764,146	\$ 1,985,450	\$ 1,235,746	\$ 585,811	\$ 1,821,557

SCHOOL DISTRICT NO.36 (SURREY)
BUSINESS DEVELOPMENT
DISCRETIONARY FUNDS - EBCPAC APPROVALS

Schedule D

YEAR ENDED JUNE 30, 2012

School	Program	Requested	Approved
Bear Creek	Outdoor Adventures Club	5,000	5,000
Cedar Hills	BEAT Building Enriching Artistic Ta	5,000	5,000
Community Schools	Healthy Start	25,000	25,000
Community Schools	Lego Robotics	4,500	4,500
Ed Services	LLL	20,000	20,000
Ed Services	Orchestra Program	8,350	8,350
Ed Services	Play Connect Learn	5,000	5,000
Ed services	Friend to Friend - Autism	3,750	3,750
Elgin Park	Social Responsibility	2,300	2,300
Elgin Park	Grade 7 Day	1,500	1,500
Enver Creek	Cross Curricular Journalling	9,000	9,000
Fraser Heights	Music Therapy	2,520	2,520
George Greenaway	Be the Change	3,000	3,000
Georges Vanier	Book Club for Aboriginal Readers	2,000	2,000
Henry Bose	Balancing the Picture	2,000	2,000
Holly	Transportation	3,500	3,500
Jessie Lee	Through My Lens	4,100	4,100
Learning Centres	Documentary Film Making	5,000	5,000
Lord Tweedsmuir	Robotics	2,228	2,228
Panorama Ridge	Homework Club	1,974	1,974
Senator Reid	Grade 7 Leadership	4,418	4,418
Tamanawis	Challenge Day	5,800	5,800
Tamanawis	Greenhouse Project	1,873	1,873
TE Scott	Family Literacy	2,500	2,500
William Watson	Track Meet Ribbons	500	500
TOTAL		\$130,813	130,813
AUTOMATIC GRANTS:			
Food Services	School Meal Program	20,000	20,000
Secondaries	Safe Teen	21,500	21,500
Ed Services	Fine Arts Festival	5,000	5,000
TOTAL		\$46,500	46,500
TOTAL GRANTED		\$177,313	177,313

BUSINESS DEVELOPMENT **Schedule D**
DISCRETIONARY FUNDS - EBCPAC APPROVALS

YEAR ENDED JUNE 30, 2013

School	Program	Requested	Approved
Frank Hurt	Keeping It Cool	\$ 1,725	\$ 1,725
Fraser Heights	Integrated Math & Science	10,000	10,000
Green Timbers	Bollywood Fusion	5,000	5,000
Henry Bose	Vancouver Symphony	1,500	1,500
Holly	Field Study Program	5,000	5,000
LAM & GPSS & KP	Experiential Learning	15,000	10,000
Lee School	Forgive, but Not Forget	3,900	3,900
Lord Tweedsmuir	Boys Leadership Group	6,000	6,000
Martha Jane Norris	Leaping into Literacy	5,000	3,100
MB Sanford	Artist in Residence	4,500	4,500
Old Yale Road	Swimming Skills	5,000	5,000
Senator Reid	3 Things' Social Responsibility	5,000	5,000
TOTAL		\$ 67,625	60,725
AUTOMATIC GRANTS:			
Food Services	School Meal Program	20,000	\$ 20,000
Secondaries	Safe Teen	21,500	21,500
Ed Services	Fine Arts Festival	5,000	5,000
TOTAL		\$46,500	46,500
TOTAL GRANTED		\$ 114,125	\$ 107,225

BOARD OF EDUCATION
of
SCHOOL DISTRICT NO. 36 (SURREY)

Schedule 4 (d)
of the
ADMINISTRATIVE MEMORANDUM
(Regular)

MEETING DATE: 2014-11-06

TOPIC: CLASS SIZE AND COMPOSITION REPORT

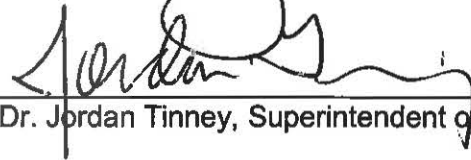
Each year districts are required to submit their report on class organization to the Ministry of Education. The attached reports indicate the current class size and composition in our schools, and are submitted to the Board for information.

Submitted by:



Rick Ryan, Deputy Superintendent

Approved by:



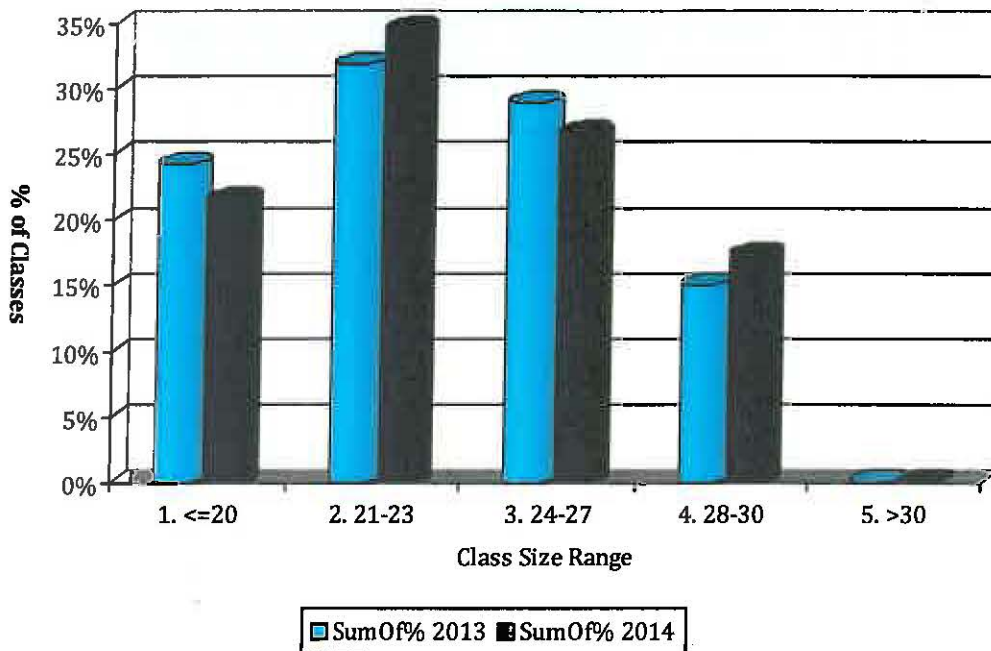
Dr. Jordan Tinney, Superintendent of Schools

Enclosures:

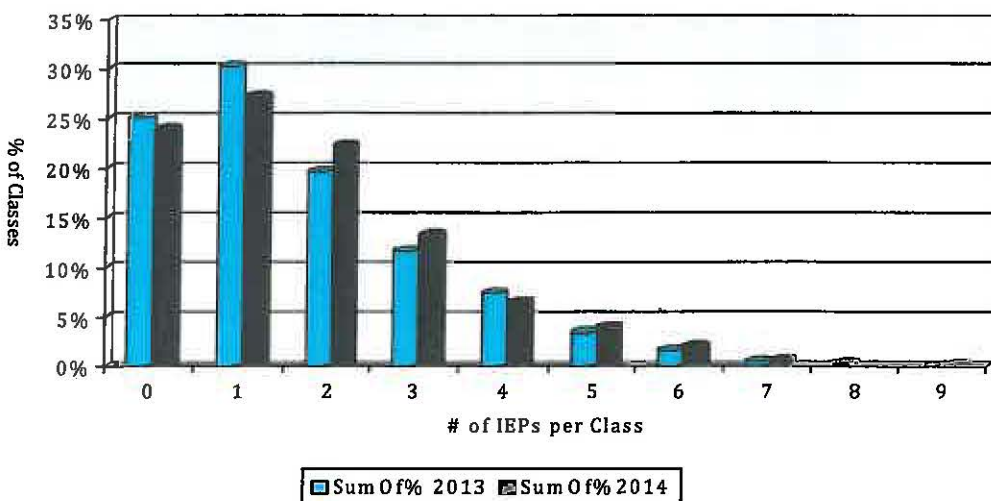
Elementary Class Size Report 2014-15
Secondary Class Size Report 2014-15
Comparison 2013-14 to 2014-15

September 2013 and September 2014

Elementary Class Size Distribution September 2013 vs. September 2014

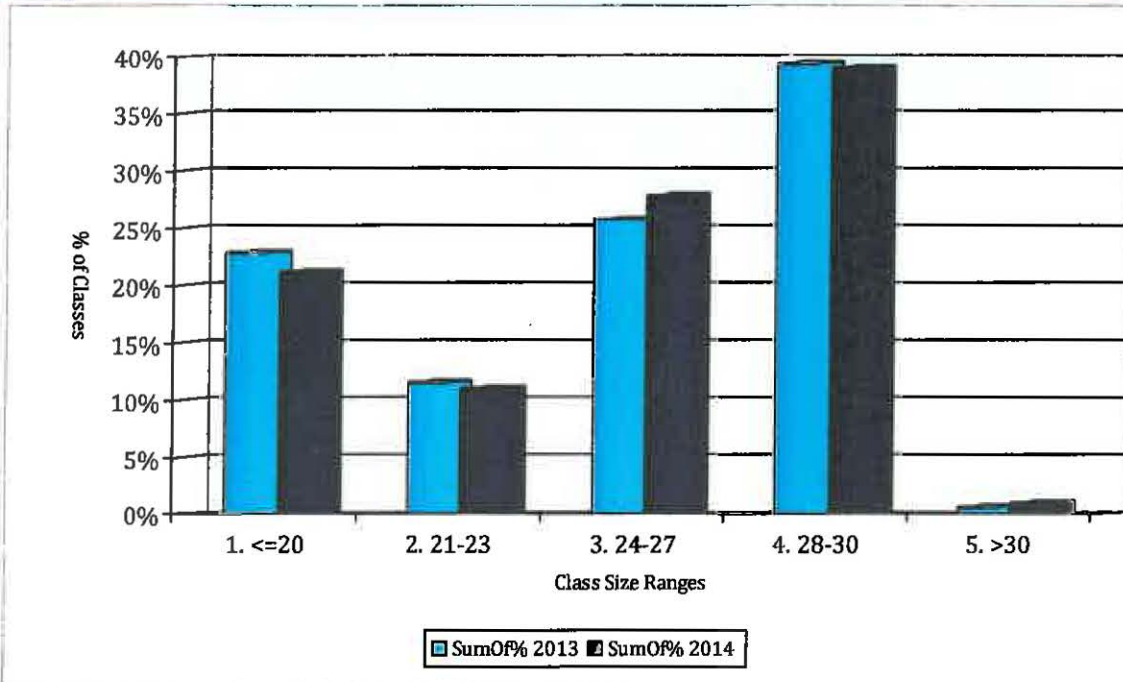


Distribution of Elementary Classes with IEPs September 2013 vs. September 2014

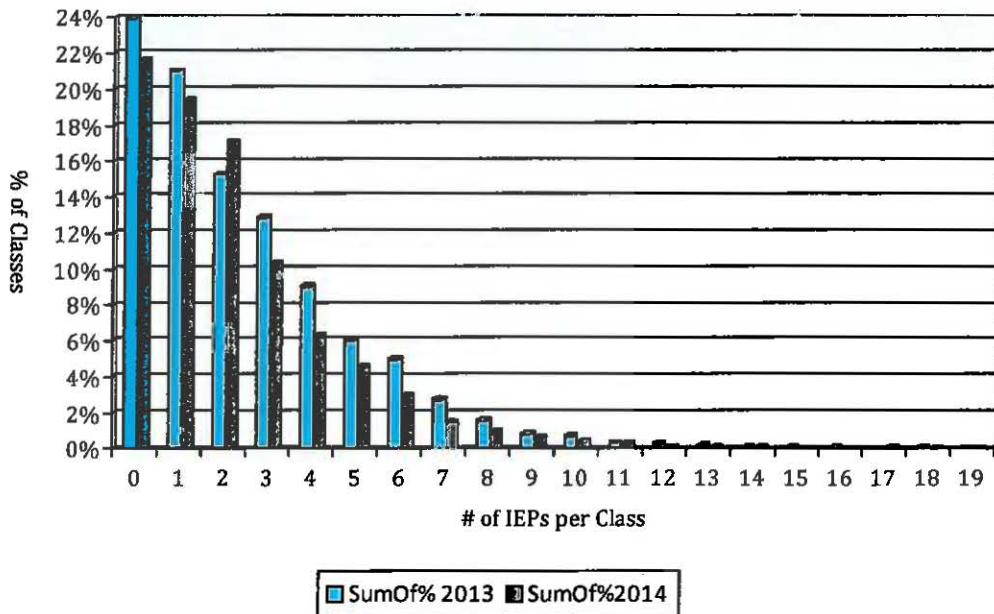


September 2013 and September 2014

Secondary Class Size Distribution September 2013 vs. September 2014



Distribution of Classes with IEPs September 2013 vs. September 2014



Class Size Comparison Report



September 2013 and September 2014

Note: Students who have individualized education plans (IEPs) represent a wide range of abilities and learning needs. The number of students with IEPs should not be considered, on its own, as an accurate description of the class composition. Classroom teachers and principals consult regarding class composition and take into consideration many factors regarding the learning environment.

2014-15 Elementary Class Size Report



October 2014

Total Number of Elementary Classes: 1695

* No Kindergarten class exceeds 22 students

* No Primary class (including 3/4 splits) exceeds 24 students

Elementary Classes over 30

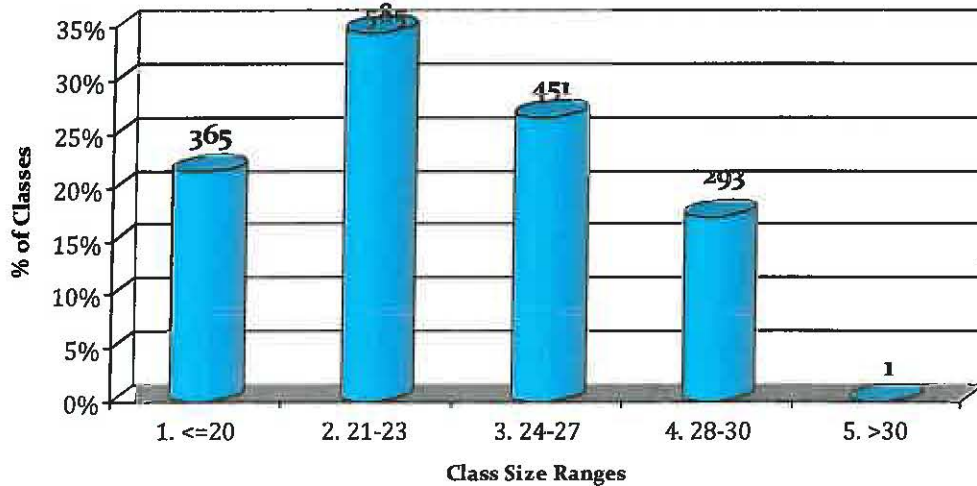
Newton Elem

Division 03

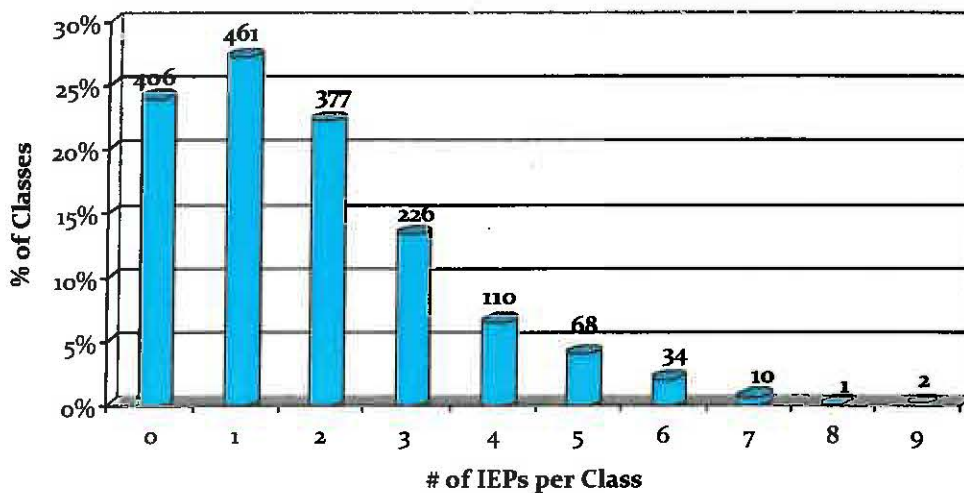
Grade 7

31

Elementary Class Size Distribution



Distribution of Classes with IEPs



Note: Students who have individualized education plans (IEPs) represent a wide range of abilities and learning needs. The number of students with IEPs should not be considered, on its own, as an accurate description of the class composition. Classroom teachers and principals consult regarding class composition and take into consideration many factors regarding the learning environment.

2014-15 Secondary Class Size Report



September 2014

Secondary Classes over 30 - Count by School

Clayton Heights Sec	3
Earl Marriott Sec	0
Elgin Park Sec	0
Enver Creek Sec	0
Fleetwood Park Sec	0
Frank Hurt Sec	0
Fraser Heights Sec	4
Guildford Park Sec	0
Johnston Heights Sec	4
Kwantlen Park Sec	6
L A Matheson Sec	5
Lord Tweedsmuir Sec	6
North Surrey Sec	1
Panorama Ridge Sec	0
Princess Margaret Sec - Surrey	10
Queen Elizabeth Sec	0
Semiahmoo Sec	0
Sullivan Heights Sec	2
Tamanawis Sec	0
Total Number of Classes > 30	41

List of Classes Over 30

Clayton Heights Sec

	Class Size	# of IEPs
CHEMISTRY 11 (01)	31	3
ENGLISH 12 (02)	31	0
FRENCH 11 (02)	31	1

Fraser Heights Sec

AP CALCULUS BC 12A (01), AP CALCULUS BC 12B (02)	37	0
AP PHYSICS 2 HONOURS 12 (01)	34	0

2014-15 Secondary Class Size Report



September 2014

PHYSICAL EDUCATION 10 (02), PHYSICAL EDUCATION 9 (02)	31	0
PHYSICS 12 (01), PHYSICS 12 (02)	36	0

Johnston Heights Sec

BA HEALTH RELATED ACTIVITIES 11B (01)	31	4
BA PERSONAL AWARENESS 12B (01)	31	4
BIOLOGY 12 (04)	31	2
FRENCH 11 (05)	31	0

Kwantlen Park Sec

ENGLISH 11 (01)	31	1
FOUNDATIONS OF MATHEMATICS 11 (01)	31	1
MATHEMATICS 8 (01)	31	5
MATHEMATICS 8 (02)	31	5
PHYSICAL EDUCATION 9 (01)	31	7
SOCIAL JUSTICE 12 (01)	31	4

L A Matheson Sec

BIOLOGY 12 (02)	31	0
FRENCH 9 (01)	31	3
PHYSICAL EDUCATION 8 (01)	31	2
SOCIAL STUDIES 11 (02)	31	1
SOCIAL STUDIES 11 (04)	31	3

Lord Tweedsmuir Sec

FRANÇAIS LANGUE SECONDE-IMMERSION 12 (01)	31	0
LAW 12 (01)	31	2
LD LOCALLY DEVELOPED 8A (02)	32	4
PHYSICAL EDUCATION 10 (01)	32	4
SOCIAL STUDIES 10 (02)	31	7
SOCIAL STUDIES 11 (02)	31	0

North Surrey Sec

PHYSICAL EDUCATION 10 (02), PHYSICAL EDUCATION 9 (02)	31	2
---	----	---

Princess Margaret Sec - Surrey

CHEMISTRY 12 (01)	31	1
FRENCH 8 (03)	31	1
LAW 12 (01)	32	0

2014-15 Secondary Class Size Report



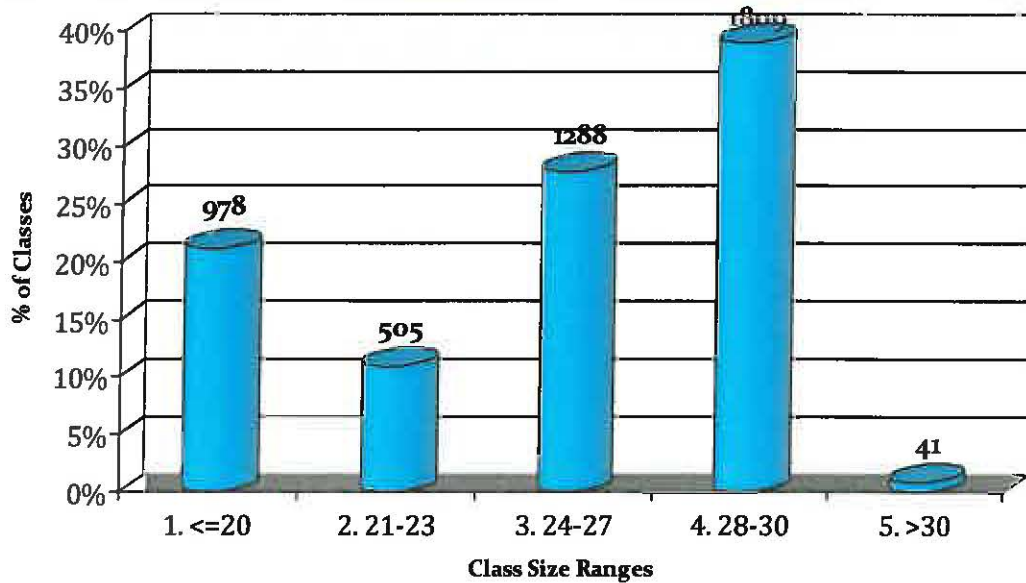
September 2014

PHYSICS 12 (01)	31	0
PRE-CALCULUS 11 (01)	33	1
PRE-CALCULUS 12 (01)	32	0
PRE-CALCULUS 12 (03)	31	0
SCIENCE 9 (01)	31	2
VISUAL ARTS 8 (01)	32	0
VISUAL ARTS 8 (03)	32	3

Sullivan Heights Sec

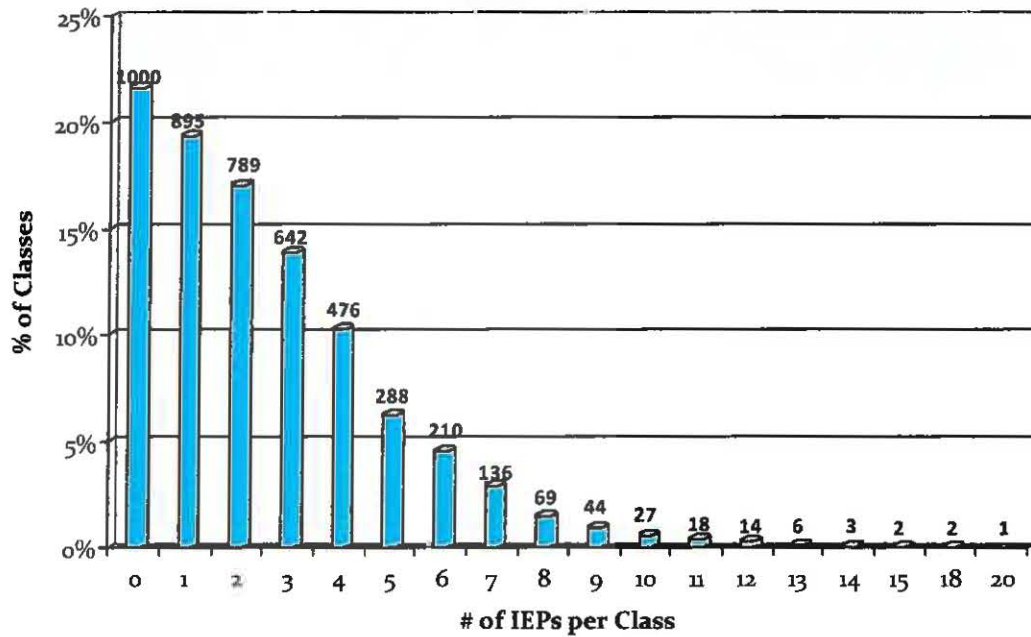
PHYSICAL EDUCATION 10 (01), PHYSICAL EDUCATION 9 (01), PHYSICAL EDUCATION 9 (01)	32	0
PHYSICAL EDUCATION 10 (02), PHYSICAL EDUCATION 9 (02), PHYSICAL EDUCATION 9 (02)	31	2

Secondary Class Size Distribution



September 2014

Distribution of Classes with IEPs



Note: Students who have individualized education plans (IEPs) represent a wide range of abilities and learning needs. The number of students with IEPs should not be considered, on its own, as an accurate description of the class composition. Classroom teachers and principals consult regarding class composition and take into consideration many factors regarding the learning environment.



**BOARD OF EDUCATION
Of
SCHOOL DISTRICT NO. 36 (SURREY)
Schedule 4 (h)
of the**

**ADMINISTRATIVE MEMORANDUM
(Regular)**

MEETING DATE: 2014-11-06

TOPIC: INCOMING CORRESPONDENCE

**CATEGORY #3
(Requiring Board action)**

NUMBER	FROM	SUBJECT
No items.		



**BOARD OF EDUCATION
Of
SCHOOL DISTRICT NO. 36 (SURREY)
Schedule 5 (a)
of the**

**ADMINISTRATIVE MEMORANDUM
(Regular)**

MEETING DATE: 2014-11-06

TOPIC: ITEMS FOR FUTURE DISCUSSION

1. Administration to report back to the Board no later than December 2014 re Safe and Caring Schools Committee timeline for implementing education and training.

Enclosures:

Submitted by:

W.D. Noye, Secretary-Treasurer

Approved by:

Dr. J. Tinney, Superintendent



**BOARD OF EDUCATION
Of
SCHOOL DISTRICT NO. 36 (SURREY)
Schedule 5 (b)
of the**

**ADMINISTRATIVE MEMORANDUM
(Regular)**

MEETING DATE: 2014-11-06

TOPIC: FUTURE MEETINGS

DATE	TIME	PLACE	EVENT
Thursday, December 11, 2014 (**)	7:00 pm	District Ed. Centre	Regular Board
Thursday, December 18, 2014	7:00 pm	District Ed. Centre	Regular Board
Thursday, January 15, 2015	7:00 pm	District Ed. Centre	Regular Board
Thursday, February 12, 2015	7:00 pm	District Ed. Centre	Regular Board
Thursday, March 5, 2015	7:00 pm	District Ed. Centre	Regular Board

** Inaugural

Enclosures:

Submitted by:

W.D. Noye, Secretary-Treasurer

Approved by:

Dr. J. Tinney, Superintendent