



Holly Elementary School

10719 – 150th Street, Surrey, B.C. V3R 4C8
Telephone: (604) 585-2566 Fax: (604) 581-1783

May 2017

MR SHOOK'S MESSAGE

It has been an exciting past few weeks. There have been many wonderful fieldtrips, which have extended learning outside of our classrooms. Divisions 1, 2 and 3 had an amazing Camp experience to Kawkawa Lake in Hope and many classes had the opportunity to learn about science at PlayLand. Our track teams brought home a ton of ribbons from the SPED track meet and Riverdale Track Meet. They did a wonderful job competing in the events and were excellent representatives of our school. We look forward to seeing our team compete at the District Meet on June 7. Thank you to our awesome track coaches for providing this opportunity for our track stars.

Once again our dance teams and choir wowed the audience at the Children's Festival and at our Parent Appreciation Tea. Our students also "ROCKED IT" at our Covers and Mash-ups performances. Thank you to Ms. Jones and Ms. Varpaul for teaching our dancers. Thank you also to our dancers for working so hard and representing us so well at the festival.

Sincerely,
Andrew Shook

PARENT REQUESTS FOR 2017/2018

Decisions regarding the placement of students in next year's class are complex, involving many factors. Some factors are gender balance, learning styles, previous placements, balance of student academic and behavioral needs, student strengths, etc. Parents can provide the school with important information, which can assist in the placement of students. This information should not be a request for a specific teacher or friend, but rather important personal, educational, or social information. If you wish to provide us with information please drop us a note at the office. Thank you!

SURREY SCHOOL LUNCH PROGRAM

Lunch Program forms must be returned to the school at the very latest by the first day of the coming month.

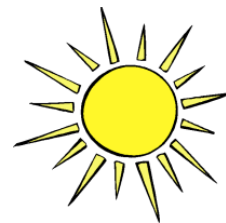


SPORTS DAY – FRIDAY JUNE 16

Please plan to join us for our annual Sports Day! The whole family is welcome! Rain or Shine!

The following is a rough timeline of the day:

- attendance in class at 8:30
- proceed to starting stations
- rotation through stations
- rotations complete by 11:30
- lunch in classrooms
- outside play at lunch
- students may go to the concession
- students return to class for attendance at 12:25
- egg toss or tug of war or class activity
- ribbons presented in class
- dismissal at 2:23



DRESS CODE

As the warm weather begins it is time for a reminder:

- Tops must cover the midriff area
- Girls may not wear short skirts, short shorts, spaghetti straps, low cut tops or anything revealing
- Boys may not wear tight 'muscle shirts,' undershirts or tank tops
- Undergarments must not be in sight
- Clothing should be free of alcohol or drug references, or any other inappropriate wording



Thanks for honouring Holly's dress code.

LIBRARY NEWS

The end of the school year is close and that means that all library books need to come back to the library. Please look in your homes for any lost or missing books, as your student will be charged for the cost of any missing or damaged books.



WE NEED YOUR HELP AGAIN

The end of the school year is fast approaching, so could you please let us know:

- if you are moving over the summer and will not be returning to Holly in September
- if your child will be late returning to school in September so that we can hold your spot
- of any changes in address, phone number, **citizenship**, etc.

HOLLY SCHOOL FEES 2017/2018

The school district requires that we inform parents of upcoming school fees. At Holly, our generous and hard working parent group (Holly Society) supports students in various events and field studies throughout the year. They also pay for all student planners, which cost \$5 each! District grants also cover many costs of field studies. However, we do sometimes ask parents to contribute to special events. Throughout the school year parents may be requested to pay anywhere from \$2.00 to \$25.00 for various field trips.

Grade 7 band students are given options to purchase, rent or borrow instruments. Holly has a good selection of instruments if rental or purchase costs are too high.

At all times these fees are optional. We, at Holly, are committed to all students taking part in activities and, if at any time, you are asked to fund an event or supplies for your child and the cost is too much, please call us at the office and we will do our best to confidentially help you.

Andrew Shook
Principal, Holly Elementary School

HOLLY'S SUMMER SCHOOL PROGRAMS

Once again, at Holly Elementary, we are offering a series of summer education programs. Selections have been made by Holly staff according to a criterion given by the school district. Registration forms have already been collected and we are ready to begin when July comes.

Students in K to Grade 6: Tue. July 4 – Fri. July 14; 8:30 - 12:56 @ Riverdale Elementary.

Students in Grade 7 Transition to Grade 8: Tue. July 4 – Fri. July 28; 8:30 – 12:42 @ Guildford Park.

2017-2018 BELL SCHEDULE

8:30	First Bell
8:35	Class Begins
10:10 – 10:25	Recess
11:40 – 12:00	Students Eat Lunch
12:00 – 12:25	Outside Activity Time
12:25	Afternoon Classes Begin
2:25	Students Dismissed



MARK YOUR CALENDARS!



June

14	Grade 7 Graduation Celebration @ 6pm
16	Sports Day
20	Aboriginal Day Assembly & Celebration
22	Year End Celebration Assembly – Primary (AM), Intermediate (PM)
29	Final Formal Report Cards and Last Day of Classes Early Dismissal

CHECK THE FIRST PAGE IN YOUR CHILD'S PLANNER FOR THE SCHOOL YEAR CALENDAR!

2017-2018 CALENDAR

September

5	School Opens
25	Non-Instructional Day – School Closed
28	Terry Fox Run

October

4	Picture Day
9	Thanksgiving Day – School Closed
19	Early Dismissal – Student Led Conferences
20	Non-Instructional Day – School Closed

November

3	Non-Instructional Day – School Closed
8	Picture Retakes
10	Non-Instructional Day – School Closed
13	Remembrance Day (Stat Holiday)

December

15	First Formal Report Cards
19	Early Dismissal – Parent/Teacher Conferences
22	Last Day Of Classes Before Winter Break
25	Winter Break Starts

January

5	Winter Break Ends
8	School Reopens After Winter Break

February

12	Family Day – School Closed
16	Non-Instructional Day – School Closed

March

16	Second Formal Report Cards Last Day of Classes Before Spring Break
19-23	Spring Break
26-29	School Closure Days
30	Good Friday – School Closed

April

2	Easter Monday – School Closed
3	School Reopens After Spring Break

May

1	Art Crawl starts
2	Art Crawl Early Dismissal
3	Parent Tea
4	Non-Instructional Day – School Closed
21	Victoria Day – School Closed
28	Non-Instructional Day – School Closed

June

28	Final Formal Report Cards & Last Day of Classes Early Dismissal
29	Administrative Day/School Closed