



Holly Elementary School

10719 – 150th Street, Surrey, B.C. V3R 4C8
Telephone: (604) 585-2566 Fax: (604) 581-1783

May 2018

www.surreyschools.ca/holly

MR SHOOK’S MESSAGE

It has been an exciting past few weeks. There have been many wonderful fieldtrips, which have extended learning outside of our classrooms. Our track teams brought home a ton of ribbons from the SPED track meet and Riverdale Track Meet. They did a wonderful job competing in the events and were excellent representatives of our school. We look forward to seeing our team compete at the District Meet on June 5. Thank you to our awesome track coaches for providing this opportunity for our track stars.

Once again our dance teams and choir wowed the audience at the Children’s Festival and at our Parent Appreciation Tea. Our students also “ROCKED IT” at our talent show. Thank you again to all our staff for volunteering their time to help our kids prepare.

Sincerely,
Andrew Shook

PARENT REQUESTS FOR 2018/2019

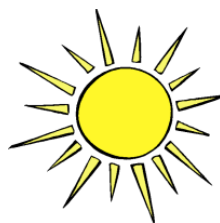
Decisions regarding the placement of students in next year’s class are complex, involving many factors. Some factors are gender balance, learning styles, previous placements, balance of student academic and behavioral needs, student strengths, etc. Parents can provide the school with important information, which can assist in the placement of students. This information should not be a request for a specific teacher or friend, but rather important personal, educational, or social information. If you wish to provide us with information please drop us a note at the office. Thank you!

SPORTS DAY – FRIDAY JUNE 15

Please plan to join us for our annual Sports Day! The whole family is welcome! Rain or Shine!

The following is a rough timeline of the day:

- attendance in class at 8:30
- proceed to starting stations
- rotation through stations
- rotations complete by 11:30
- lunch in classrooms
- outside play at lunch
- students may go to the concession
- students return to class for attendance at 12:25
- egg toss or tug of war or class activity
- ribbons presented in class
- dismissal at 2:25



LIBRARY NEWS



The end of the school year is close and that means that all library books need to come back to the library. Please look in your homes for any lost or missing books, as your student will be charged for the cost of any missing or damaged books.

HOLLY SCHOOL FEES 2018/2019

The school district requires that we inform parents of upcoming school fees. At Holly, our generous and hard working parent group (Holly Society) supports students in various events and field studies throughout the year. They also pay for all student planners, which cost \$5 each! District grants also cover many costs of field studies. However, we do sometimes ask parents to contribute to special events. Throughout the school year parents may be requested to pay anywhere from \$2.00 to \$25.00 for various field trips.

Grade 7 band students are given options to purchase, rent or borrow instruments. Holly has a good selection of instruments if rental or purchase costs are too high.

At all times these fees are optional. We, at Holly, are committed to all students taking part in activities and, if at any time, you are asked to fund an event or supplies for your child and the cost is too much, please call us at the office and we will do our best to confidentially help you.

Andrew Shook
Principal, Holly Elementary School

HOLLY’S SUMMER SCHOOL PROGRAMS

Once again, at Holly Elementary, we are offering a series of summer education programs. Selections have been made by Holly staff according to a criterion given by the school district. Registration forms have already been collected and we are ready to begin when July comes.

Students in K to Grade 6: Tue. July 3 – Fri. July 13; 8:30 - 12:56 @ Holly Elementary.

Students in Grade 7 Transition to Grade 8: Tue. July 3 – Fri. July 27; 8:30 – 12:42 @ Guildford Park.

2018-2019 BELL SCHEDULE

8:30	First Bell
8:35	Class Begins
10:15 – 10:30	Recess
11:42 – 12:00	Students Eat Lunch
12:00 – 12:27	Outside Activity Time
12:27	Afternoon Classes Begin
2:27	Students Dismissed



DRESS CODE

As the warm weather begins it is time for a reminder:

- Tops must cover the midriff area
- Girls may not wear short skirts, short shorts, spaghetti straps, low cut tops, or anything revealing
- Boys may not wear tight ‘muscle shirts,’ undershirts, or tank tops
- Undergarments must not be in sight
- Clothing should be free of alcohol or drug references, or any other inappropriate wording



Thanks for honouring Holly’s dress code.

SCHOOL MEAL PROGRAM

- Forms must be signed every month by the parent and returned to the teacher before the first day of every month.
- Please note any food allergies and/or food restrictions (for religious reasons only) on the form.
- Please encourage your children to eat the food that is provided and not to throw it out in the garbage. There is a daily menu included on the back of each form; should your child not like what is on the menu then please provide a lunch from home on that day.
- Due to safety concerns food is not to be taken home.
- We need your support to ensure that our meal program is continued.



STUDENT SAFETY



Please remember to go to the end of 107A to turn around. U-turns in front of the school are very dangerous for our students as well as for drivers. Thank you to all those parents who are making an effort to keep our students safe.

VISITORS – All parents & visitors to the school **must** report to the office.

SCHOOL HOURS

All students should be at school at 8:25 am and be ready to enter class when the bell rings at 8:30 am. **Class begins at 8:35 am, coming to school just before 9:00 a.m. means that your child is late.**

Late students disrupt the class and teacher upon entering the classroom. Late students also demand considerable time from the secretaries. Please help us by ensuring that your child arrives at school on time.

WE NEED YOUR HELP AGAIN

The end of the school year is fast approaching, so could you please let us know:

- if you are moving over the summer and will not be returning to Holly in September
- if your child will be late returning to school in September so that we can hold your spot
- of any changes in address, phone number, **citizenship**, etc.



MARK YOUR CALENDARS!

JUNE

13	GR. 7 GRADUATION CELEBRATION @ 6 PM
15	SPORTS DAY
19	BAND CONCERT @ 9 AM
19	YEAR END ASSEMBLY - INTERMEDIATE
20	ABORIGINAL DAY ASSEMBLY
21	YEAR END ASSEMBLY - PRIMARY
27	FAREWELL ASSEMBLY
28	FINAL FORMAL REPORT CARDS LAST DAY OF CLASSES EARLY DISMISSAL @ 1:25PM

CHECK THE FIRST PAGE IN YOUR CHILD'S PLANNER FOR THE SCHOOL YEAR CALENDAR!

2018-2019 CALENDAR

SEPTEMBER

4	FIRST DAY OF SCHOOL – 1 HOUR (TIMES TO BE POSTED)
5	FIRST <u>FULL</u> DAY OF SCHOOL
24	NON-INSTRUCTIONAL DAY – SCHOOL CLOSED
27	TERRY FOX RUN

OCTOBER

8	THANKSGIVING DAY – SCHOOL CLOSED
19	NON-INSTRUCTIONAL DAY – SCHOOL CLOSED
30	STUDENT LED CONFERENCES EARLY DISMISSAL @ 1:27 PM

NOVEMBER

8	REMEMBRANCE DAY ASSEMBLY
9	NON-INSTRUCTIONAL DAY – SCHOOL CLOSED
12	STAT HOLIDAY – SCHOOL CLOSED

DECEMBER

14	FIRST FORMAL REPORT CARD (CSL)
21	LAST DAY OF CLASSES BEFORE WINTER BREAK

**WINTER BREAK:
DECEMBER 24, 2018 – JANUARY 4, 2019**

JANUARY

7	SCHOOLS REOPEN AFTER WINTER BREAK
---	-----------------------------------

FEBRUARY

13	PARENT/TEACHER CONFERENCES EARLY DISMISSAL @ 1:27 PM
18	FAMILY DAY – NO SCHOOL
22	NON-INSTRUCTIONAL DAY – SCHOOL CLOSED

MARCH

15	SECOND FORMAL REPORT CARD (CSL) LAST DAY OF CLASSES BEFORE SPRING BREAK
----	--

**SPRING BREAK:
MARCH 18 – MARCH 29**

APRIL

1	SCHOOLS REOPEN AFTER SPRING BREAK
8	NON-INSTRUCTIONAL DAY – SCHOOL CLOSED
19	GOOD FRIDAY – SCHOOL CLOSED
22	EASTER MONDAY – SCHOOL CLOSED

MAY

1	ART CRAWL – EARLY DISMISSAL @ 1:27 PM
2	PARENT TEA
3	NON-INSTRUCTIONAL DAY – SCHOOL CLOSED
20	VICTORIA DAY – SCHOOL CLOSED
27	NON-INSTRUCTIONAL DAY – SCHOOL CLOSED
31	TALENT SHOW

JUNE

27	FINAL FORMAL REPORT CARDS LAST DAY OF CLASSES EARLY DISMISSAL @ 1:27 PM
----	---