



COYOTE CREEK ELEMENTARY SCHOOL ADDITION SCHEMATIC DESIGN

8131 - 156 STREET, SURREY, BC
PRESENTATION TO THE SCHOOL BOARD
OCTOBER 17, 2018

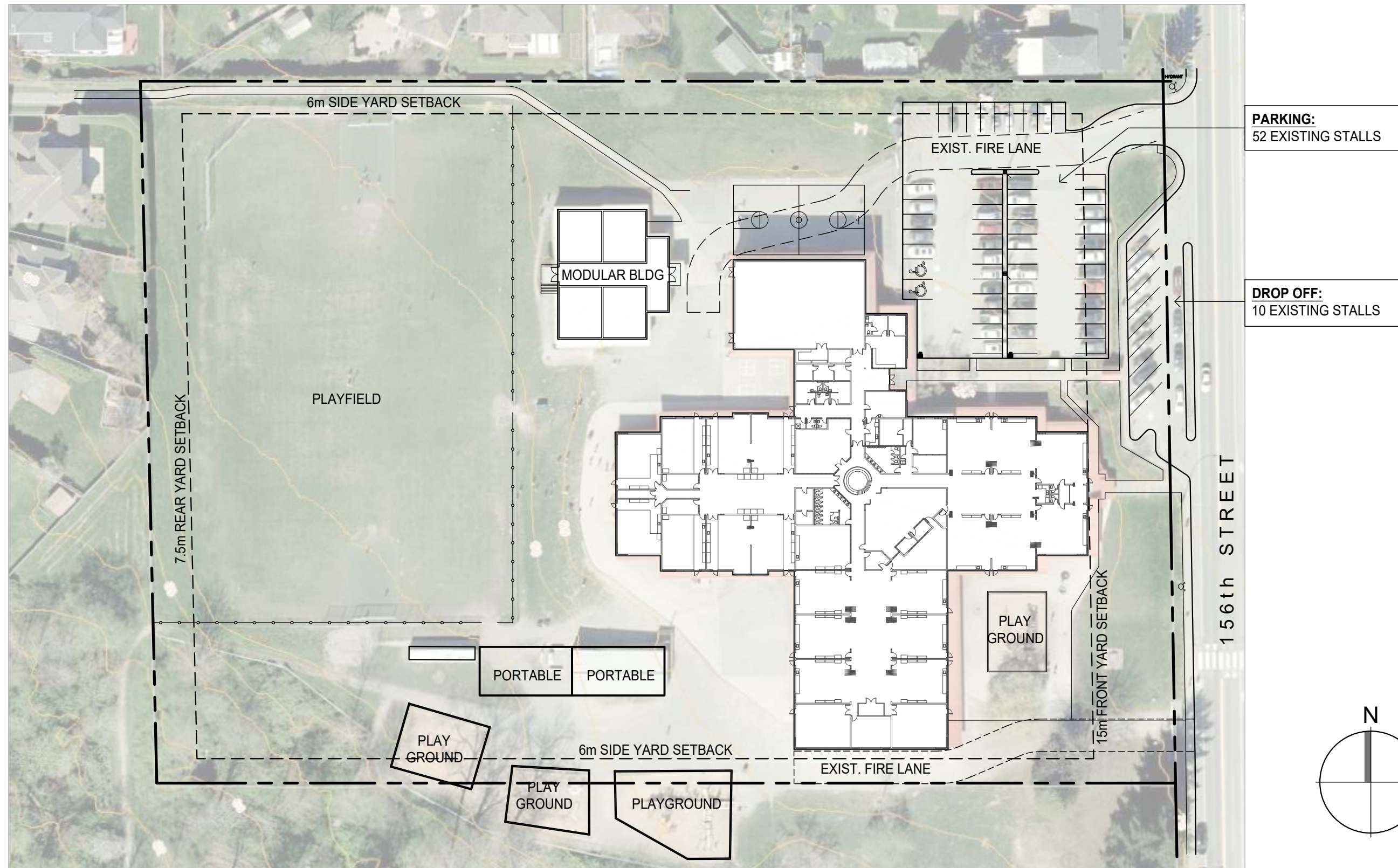


>> 200 - 1014 Homer Street, Vancouver
British Columbia, Canada V6B 2W9

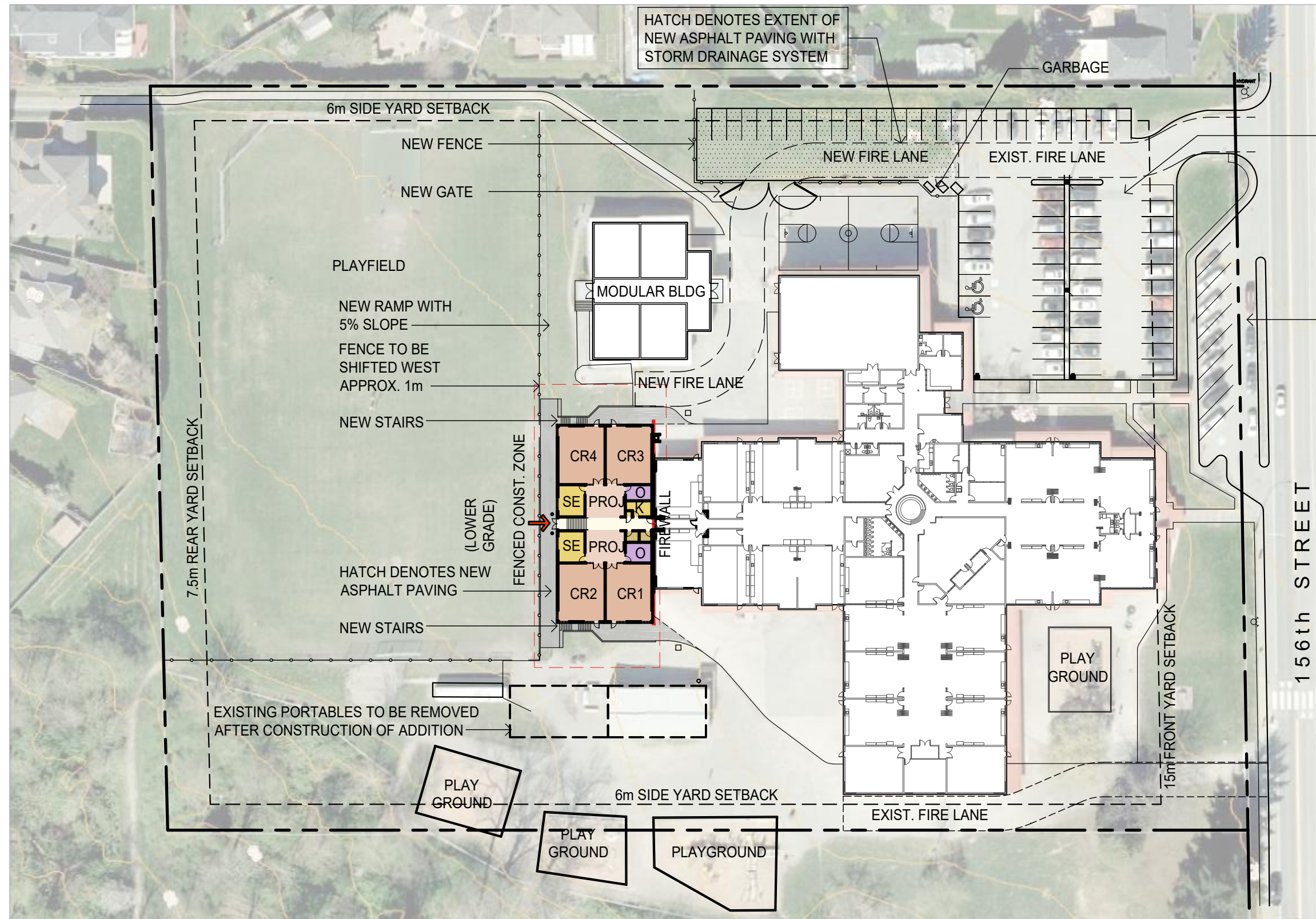
T 604 685 6312
F 604 685 0988
www.da-architects.ca



>> 14033 92 Avenue
Surrey, B.C. Canada V3V 0B7
604 596 7733



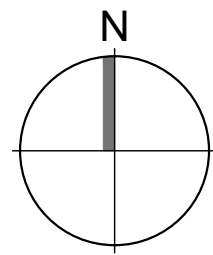
SITE PLAN
COYOTE CREEK ELEMENTARY SCHOOL ADDITION
 1:750 2018.10.11



PARKING:
52 EXISTING STALLS
+ 20 NEW STALLS =
72 STALLS

REFER TO CIVIL FOR
OFF-SITE UPGRADES

DROP OFF:
10 EXISTING STALLS
REQ'D = 9 STALLS

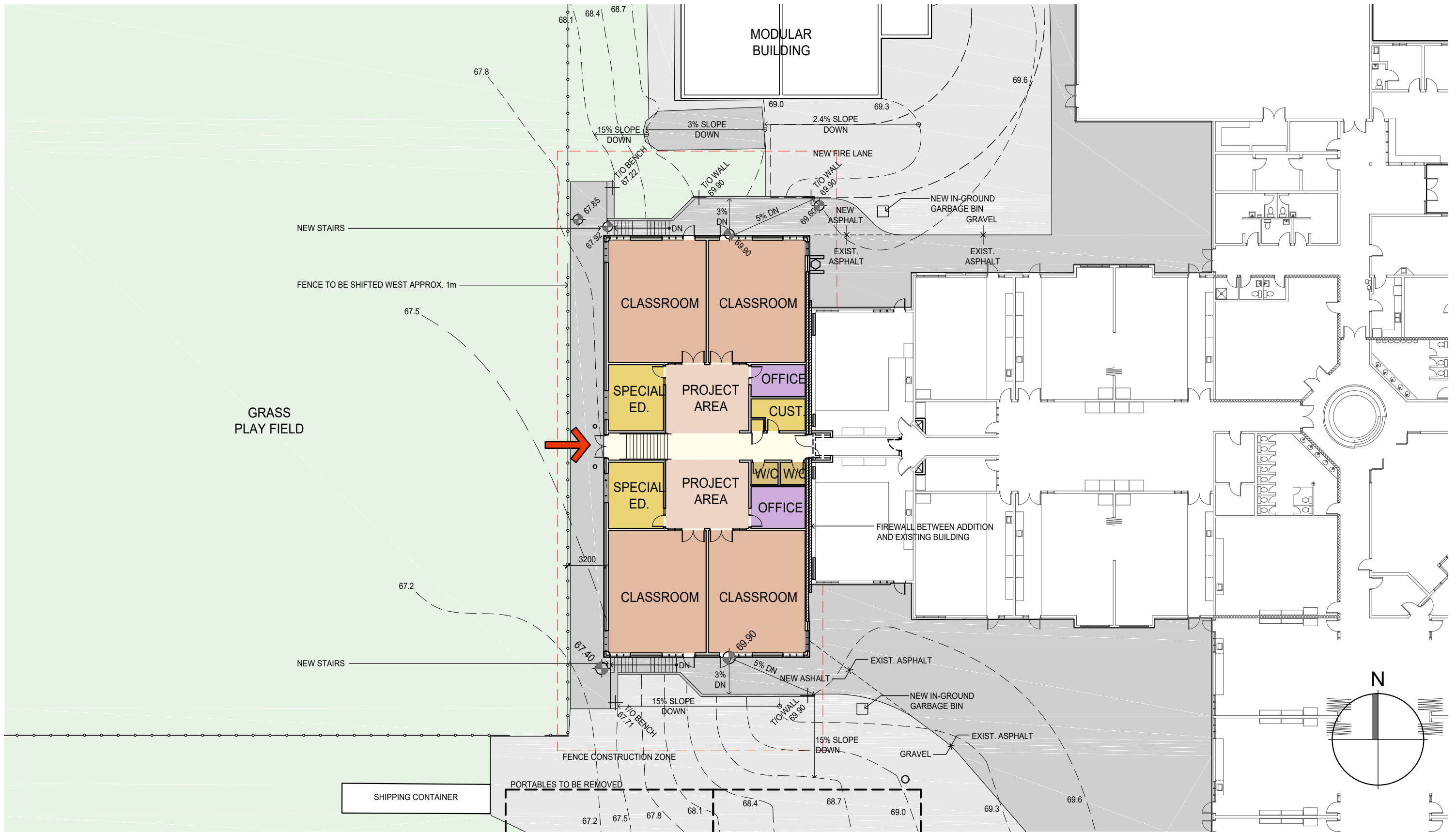


SITE PLAN
COYOTE CREEK ELEMENTARY SCHOOL ADDITION
1:750 2018.10.11



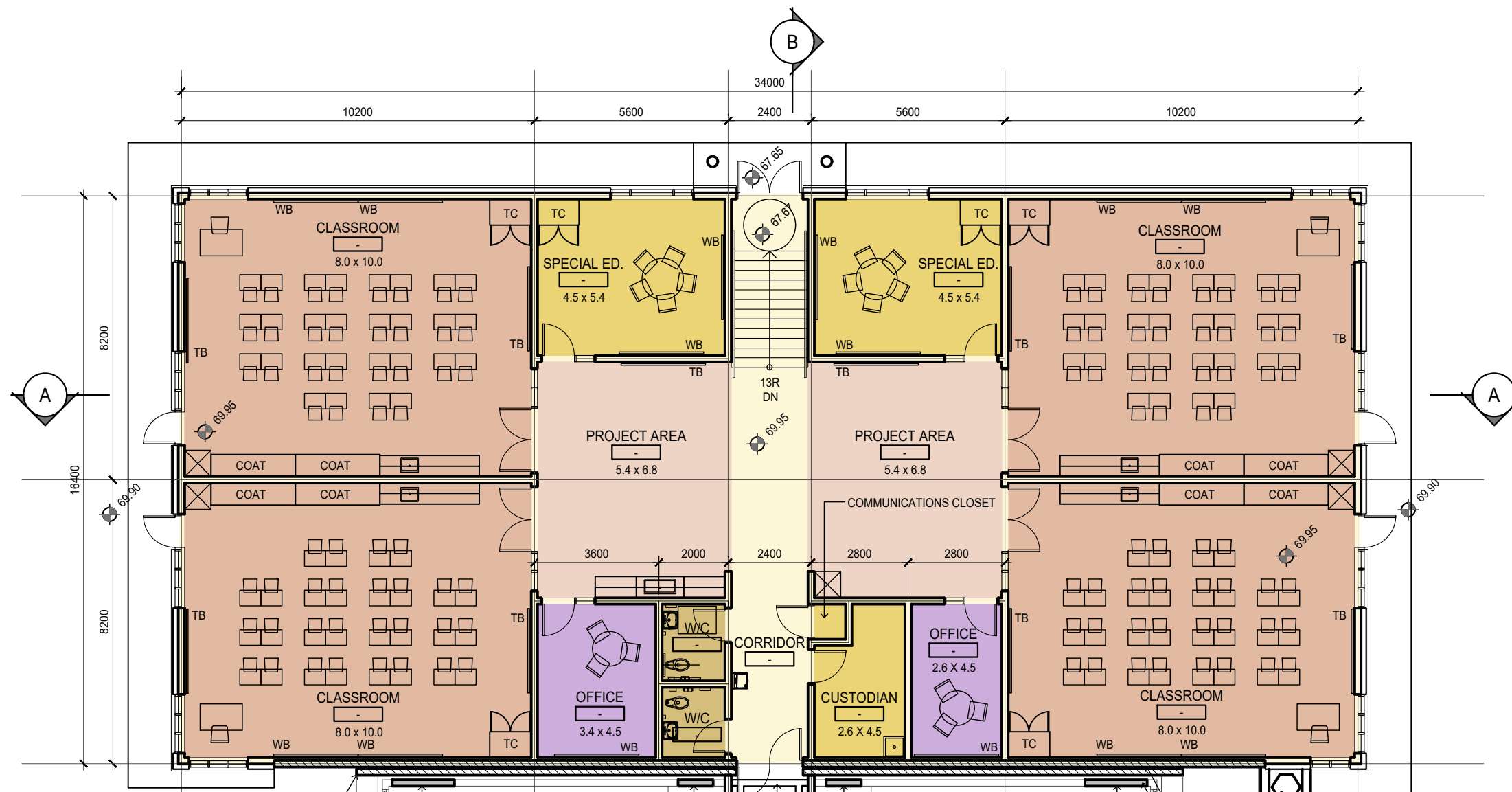
**EXISTING ENLARGED SITE PLAN WITH CONTOURS
COYOTE CREEK ELEMENTARY SCHOOL ADDITION**

1:300 2018.07.24



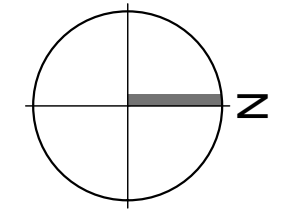
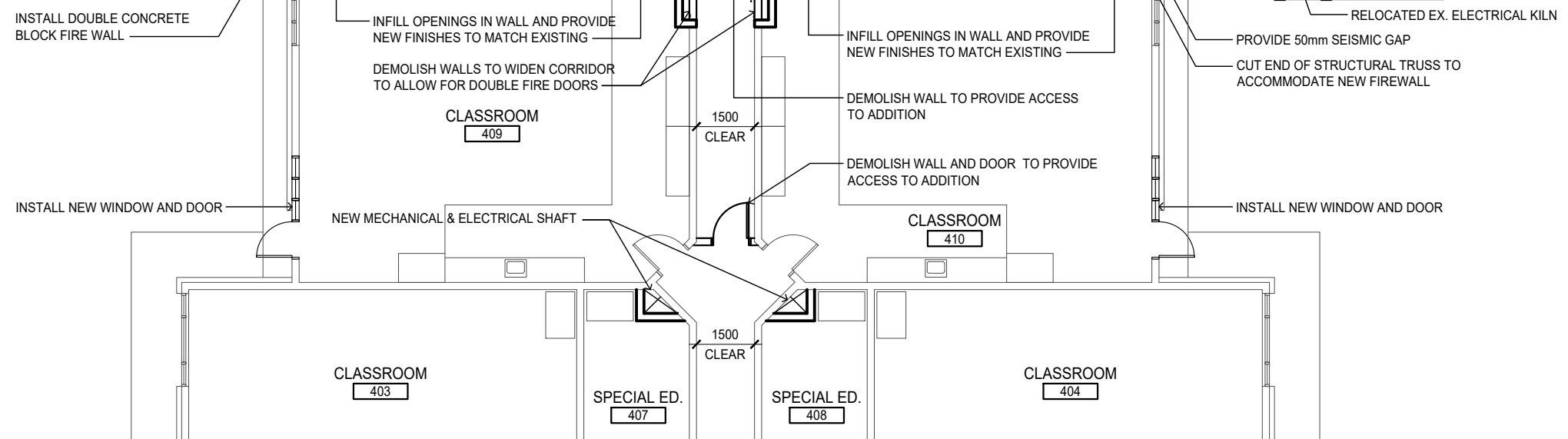
ENLARGED SITE PLAN W/ NEW CONTOURS
COYOTE CREEK ELEMENTARY SCHOOL ADDITION

1:300 2018.10.11



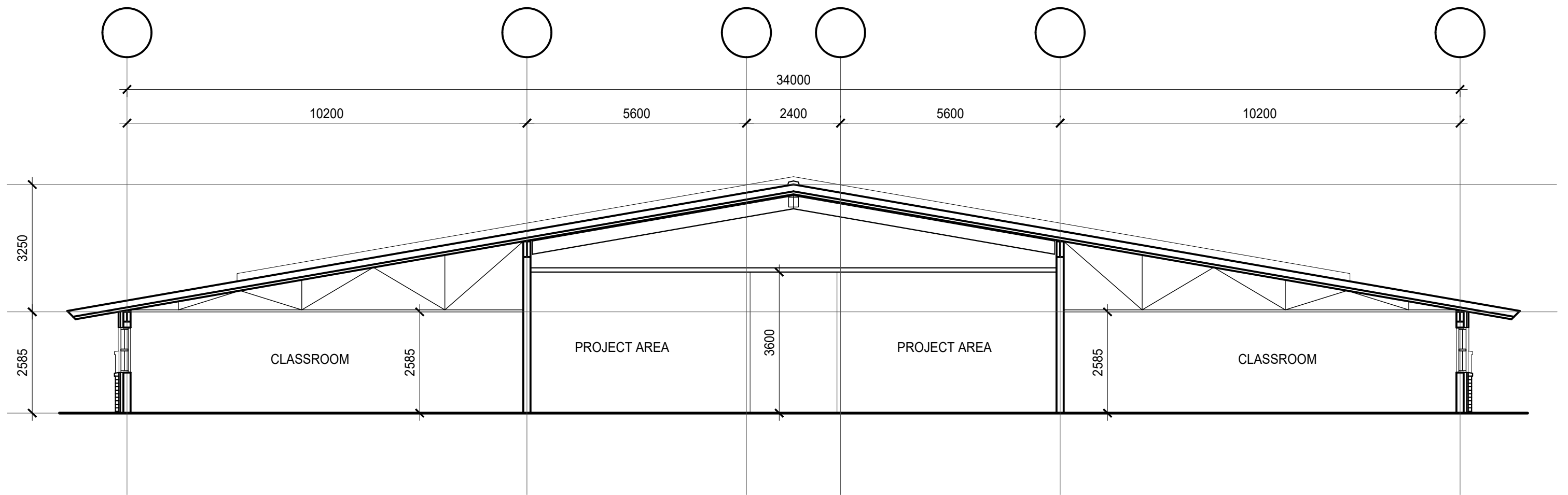
LEGEND	
	ADMINISTRATION
	GENERAL INSTRUCTION
	PROJECT AREA
	SPECIAL EDUCATION
	SERVICE SPACE
	DESIGN SPACE

ADDITION AREA: 561m²
 MAXIMUM AREA: 562.38m²



LEVEL 01 FLOOR PLAN COYOTE CREEK ELEMENTARY SCHOOL ADDITION

1:150 2018.10.11



BUILDING SECTION A
COYOTE CREEK ELEMENTARY SCHOOL ADDITION
 1:100 2018.10.11

ADDITION

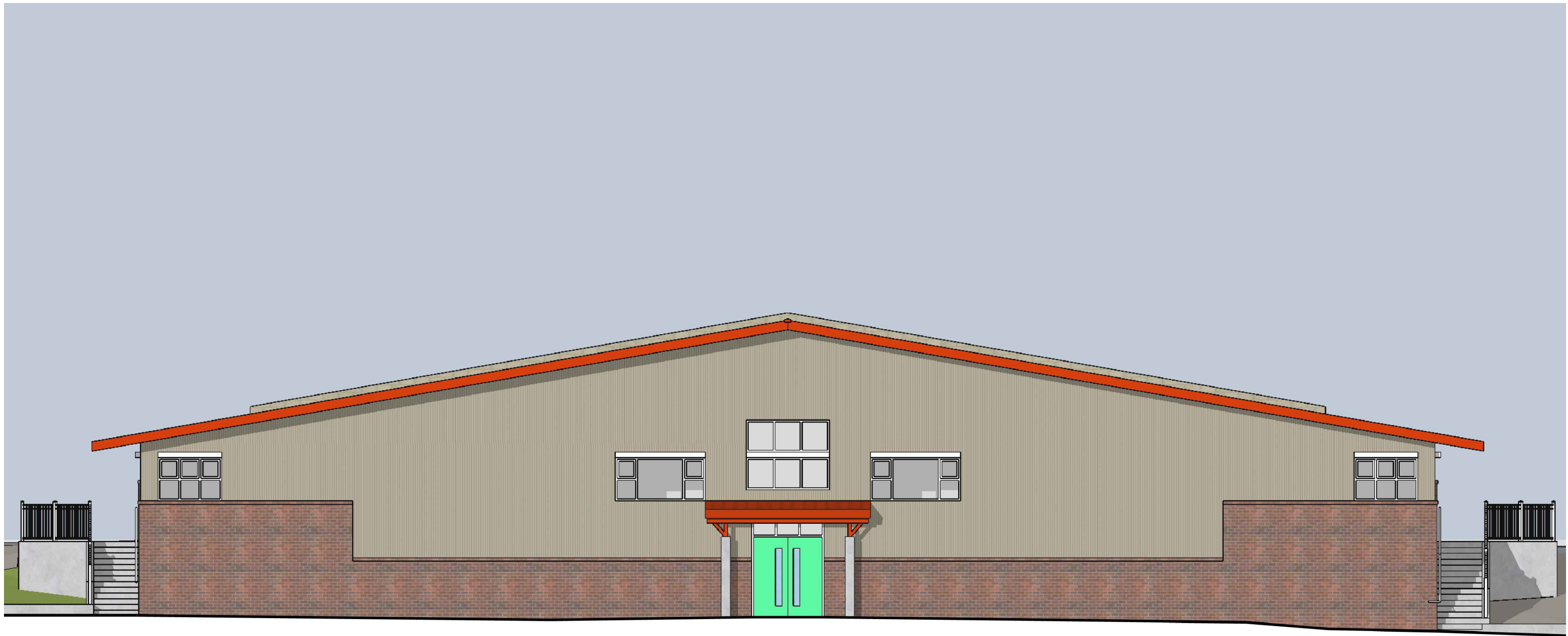
EXISTING SCHOOL



SOUTH ELEVATION

COYOTE CREEK ELEMENTARY SCHOOL ADDITION

1:100 2018.10.11



WEST ELEVATION
COYOTE CREEK ELEMENTARY SCHOOL ADDITION
1:100 2018.10.11

