

Site 048 – Kwantlen Park Addition

thinkspace 50
1963-2023 YEARS

 Surrey Schools
LEADERSHIP IN LEARNING

BOARD OF EDUCATION OF SCHOOL DISTRICT NO. 36



INTRODUCTION

SD36 PROJECT TEAM

Dave Riley

Autumn Sweet

Trevor Wong

Alana Kuroyama

Wendy Crowe

Lynda Reeve

Lyn Daniels

Mike Kilpatrick

CONSULTANT TEAM

Thinkspace Architecture

Bush, Bohlman & Partners

Rocky Point Engineering

Jarvis Engineering

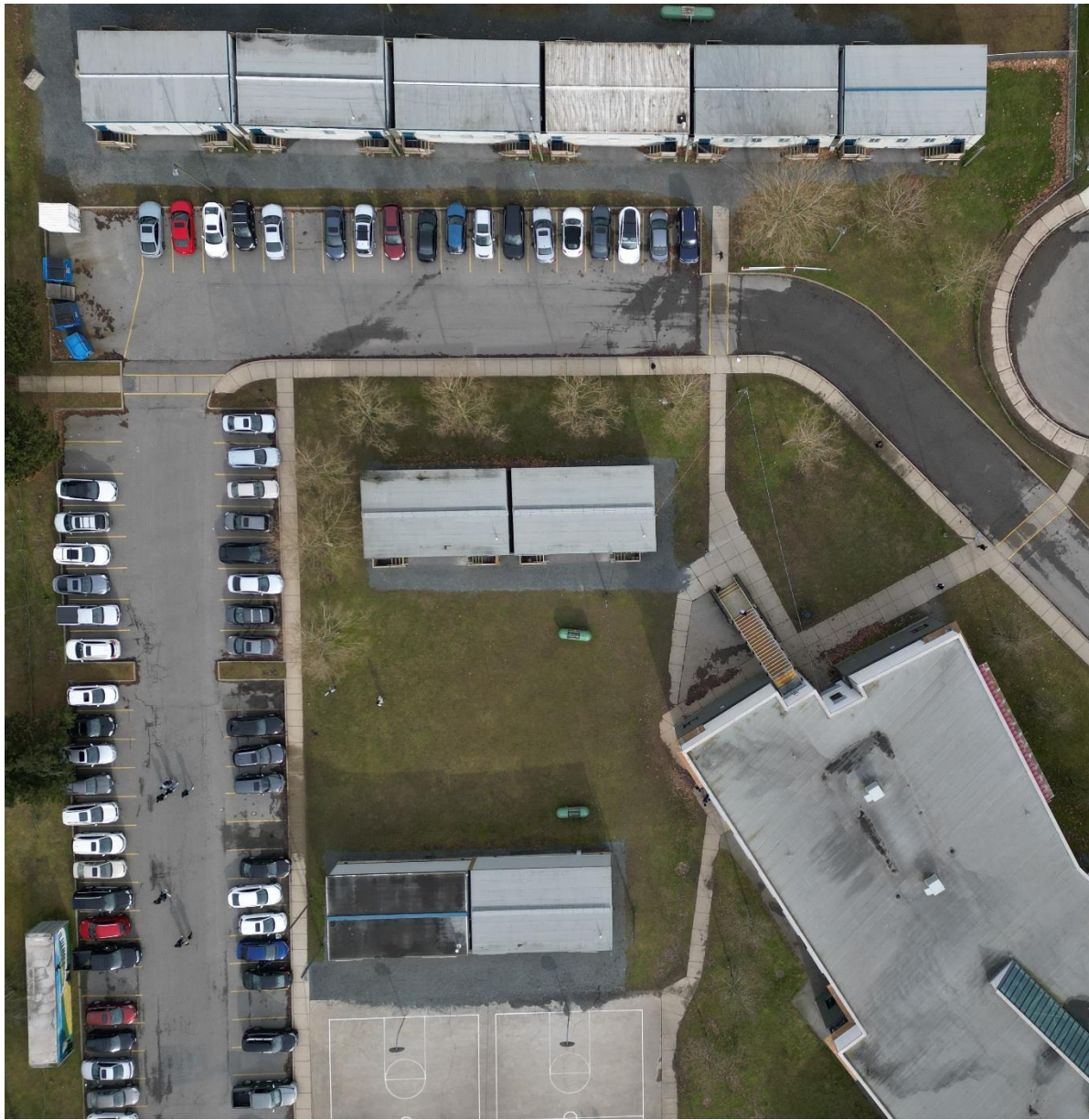
Coastland Engineering

ETA Landscape Architecture

AGENDA

1. Project Overview
2. Enlarged Site Plan
3. Portable Review
4. Floor Plans
5. Sections
6. Exterior Views
7. Interior Views
8. Proposed Schedule





SITE 048 – KWANTLEN PARK ADDITION

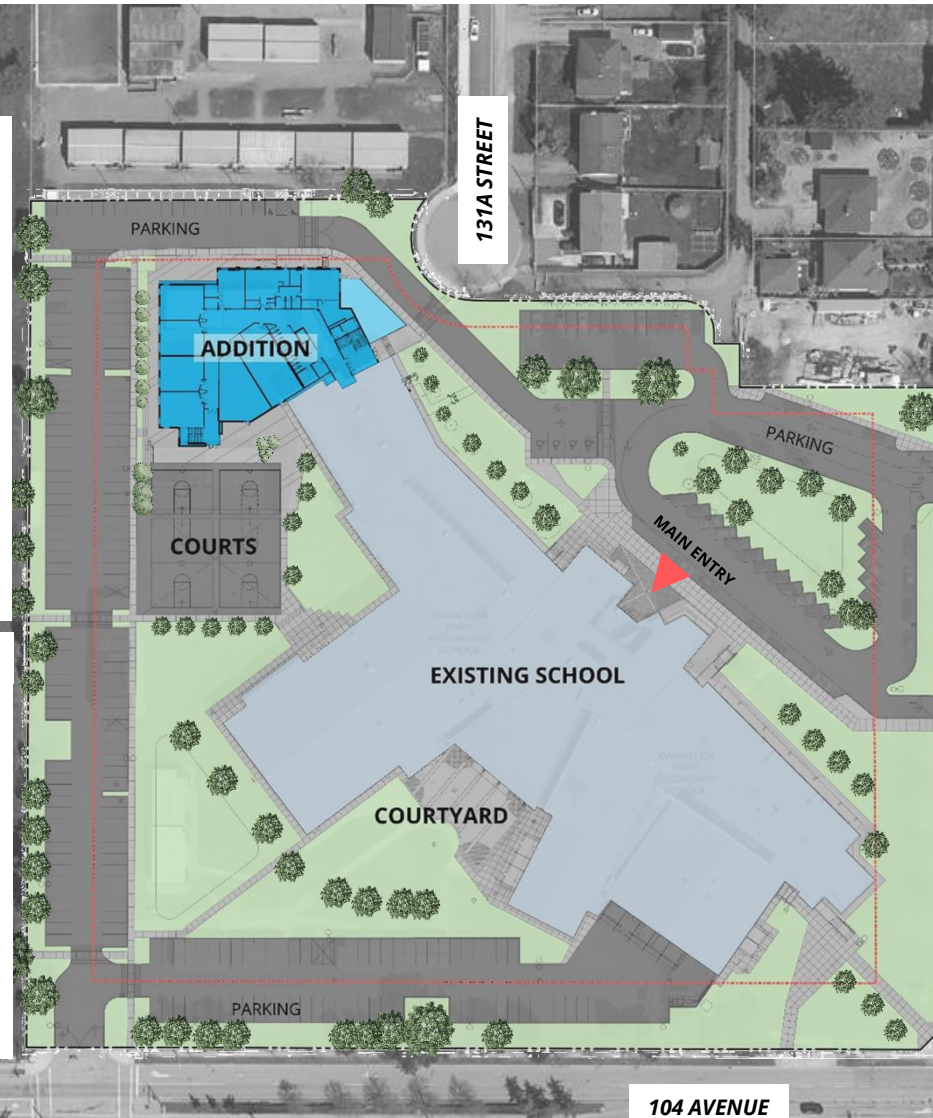
PROJECT OVERVIEW

DESIGN CONSIDERATIONS - SCHOOL

- 500 student addition
- Gender Neutral Washrooms
- Seamless connection to existing school
- 21st Century Learning
- Flexible collaboration and learning spaces
- Indigenous learning (design, spaces & culture)
- Spaces to display student work
- Outdoor rooftop patio for Indigenous Learning
- Safety & security implementation

DESIGN CONSIDERATIONS - CHILDCARE

- Address lack of childcare space in Surrey
- Prime location for childcare centre given proximity of elementary school (K.B. Woodward)
- Ground level space with separate entrance and dedicated play area
- 15 children for B/A School Care, 12 children for Toddler Care – 6 parking spaces allotted for Childcare Staff
- Spaces provided to include Large Group Rooms (2), a Kitchen, Washrooms, and an Admin room

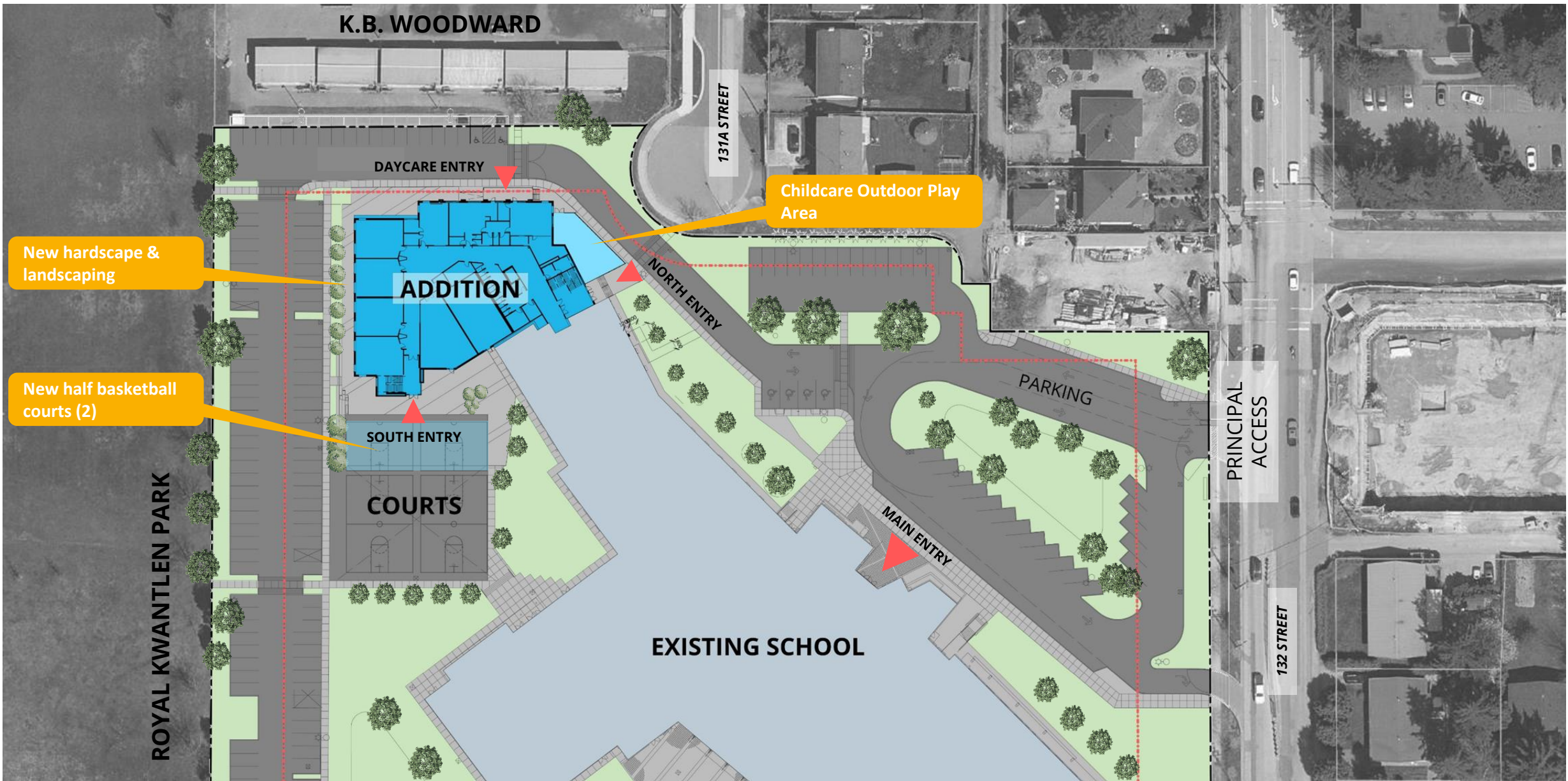


Public Secondary School Requirements

	EXISTING	ADDITION
FLOOR AREA	13,303.00	3,840.00
TOTAL (m2)	17,143.00	
STUDENT COUNT	1200	500
TOTAL (NOMINAL CAPACITY)	1700	
CLASSROOM COUNT	48	48 + 20
PORTABLE COUNT	18	6
PARKING REQUIRED		298
PARKING PROVIDED		245
*NOTE: A Development Variance Permit will be applied for in order to reduce the required amount of parking		

SITE 048 – KWANTLEN PARK ADDITION

PROJECT OVERVIEW



K.B. WOODWARD

131A STREET

DAYCARE ENTRY

Childcare Outdoor Play Area

New hardscape & landscaping

ADDITION

NORTH ENTRY

New half basketball courts (2)

SOUTH ENTRY

PARKING

PRINCIPAL ACCESS

ROYAL KWANTLEN PARK

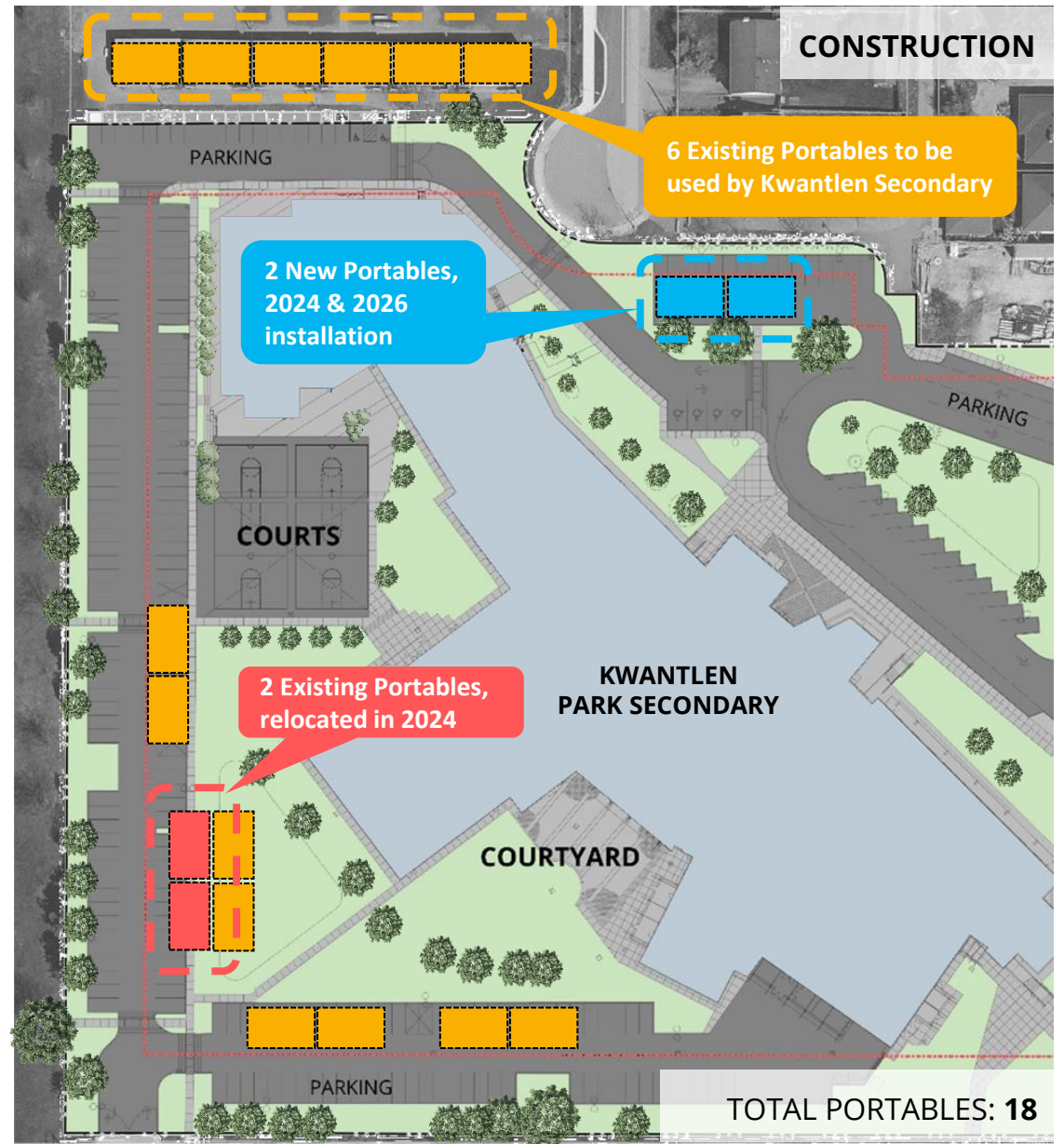
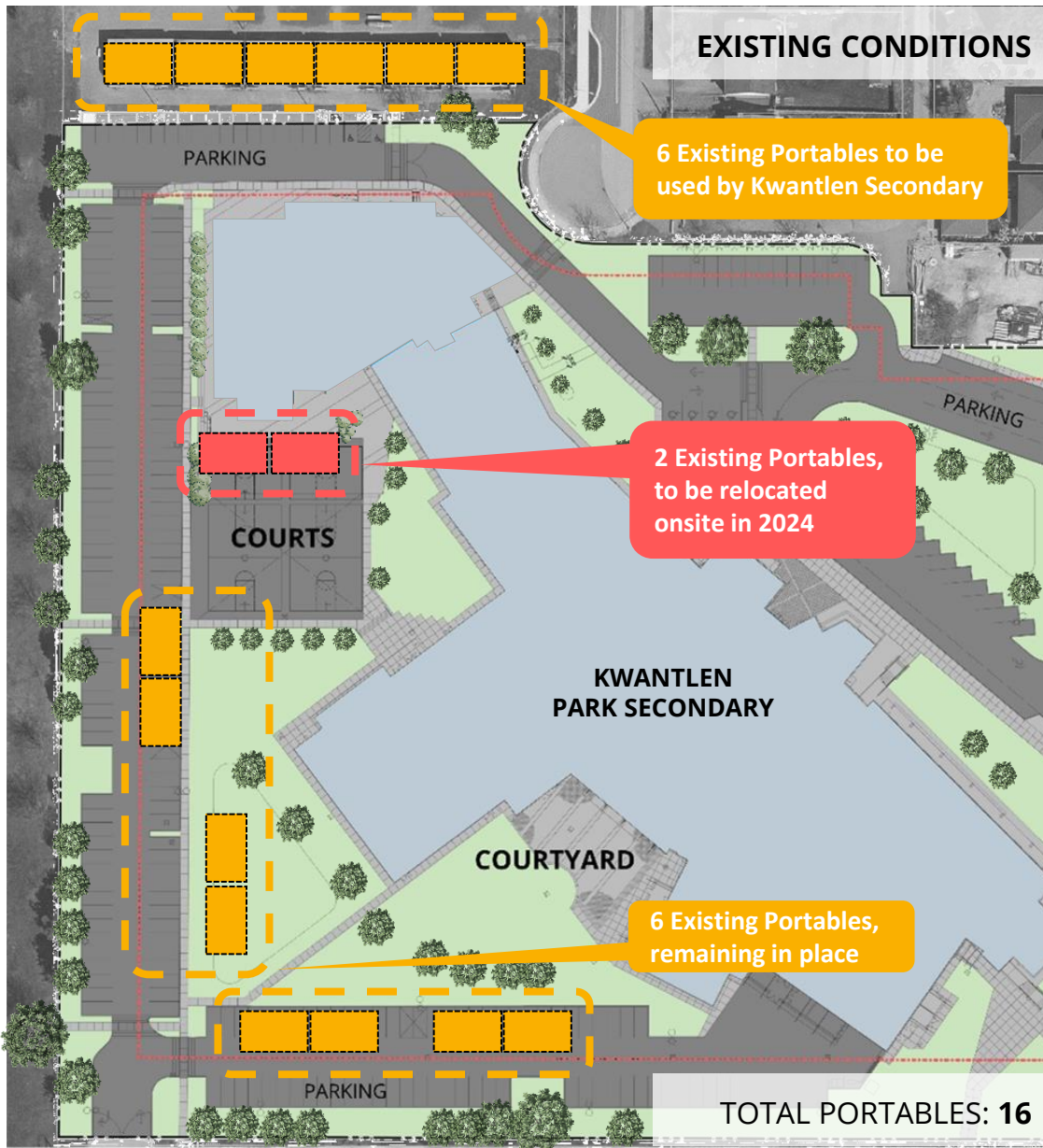
COURTS

MAIN ENTRY

EXISTING SCHOOL

132 STREET

SITE 048 – KWANTLEN PARK ADDITION
ENLARGED SITE PLAN

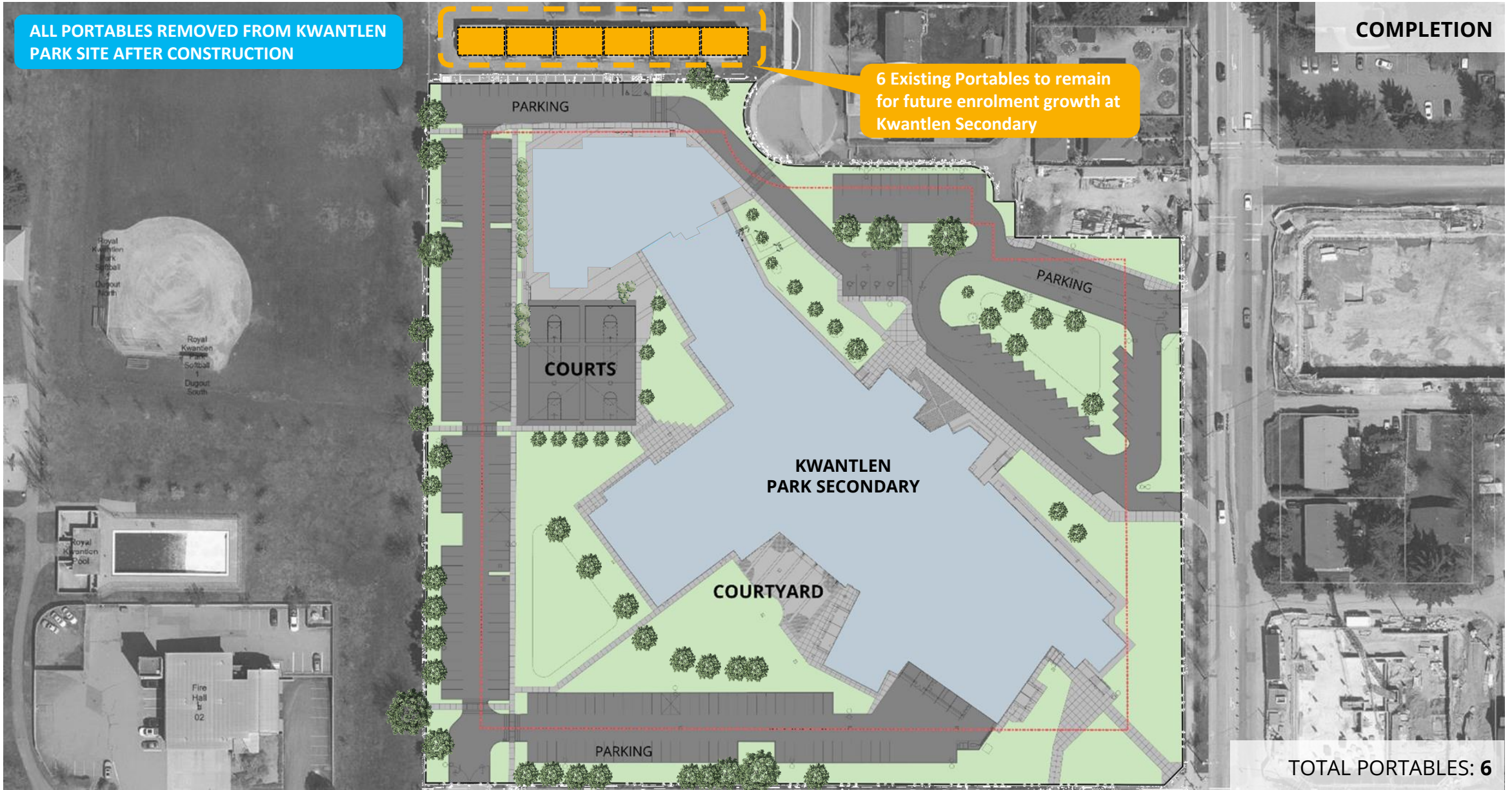


SITE 048 – KWANTLEN PARK ADDITION
PORTABLE REVIEW

ALL PORTABLES REMOVED FROM KWANTLEN PARK SITE AFTER CONSTRUCTION

COMPLETION

6 Existing Portables to remain for future enrolment growth at Kwantlen Secondary



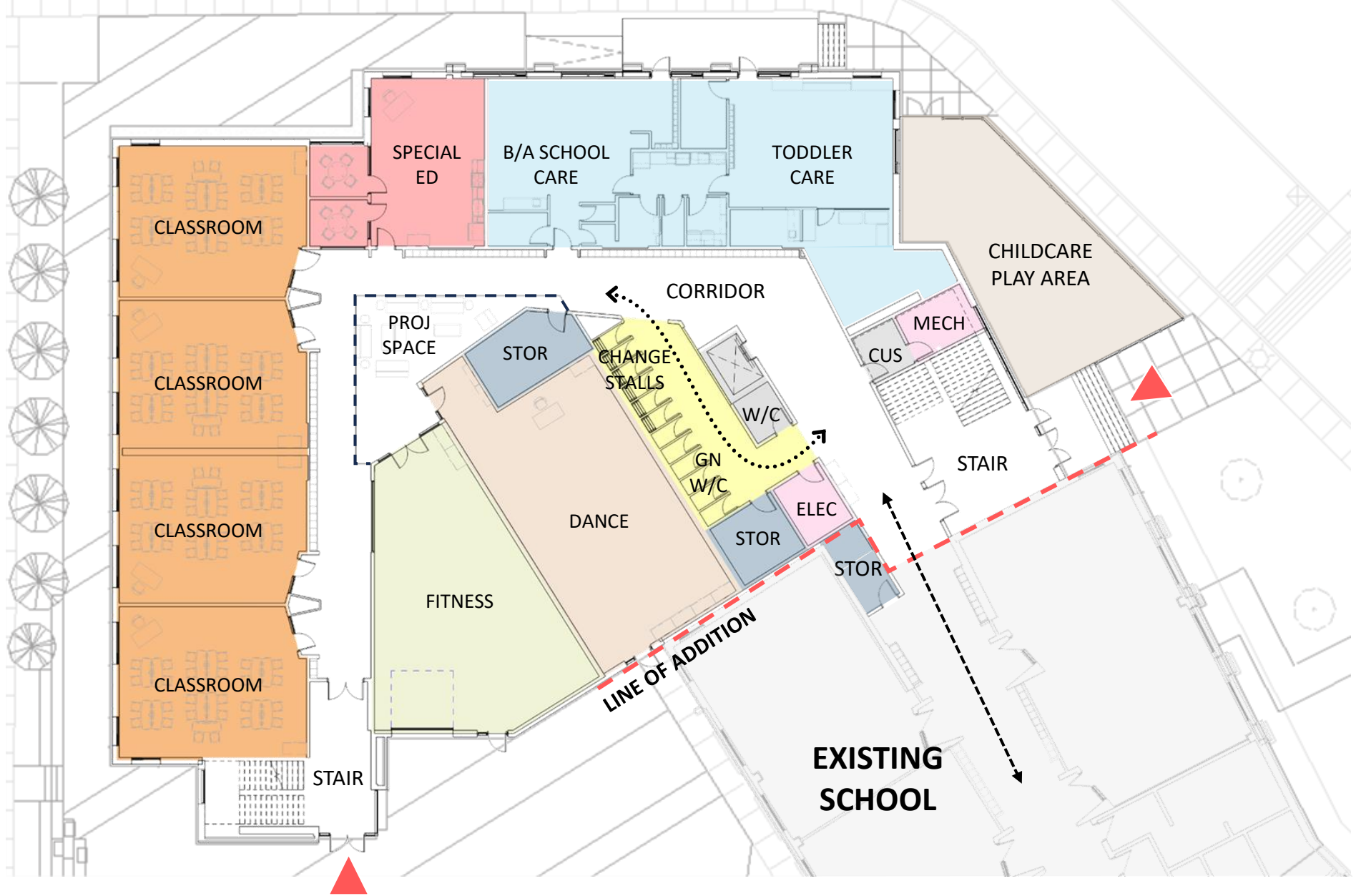
TOTAL PORTABLES: 6

SITE 048 – KWANTLEN PARK ADDITION

PORTABLE REVIEW

COLOR LEGEND

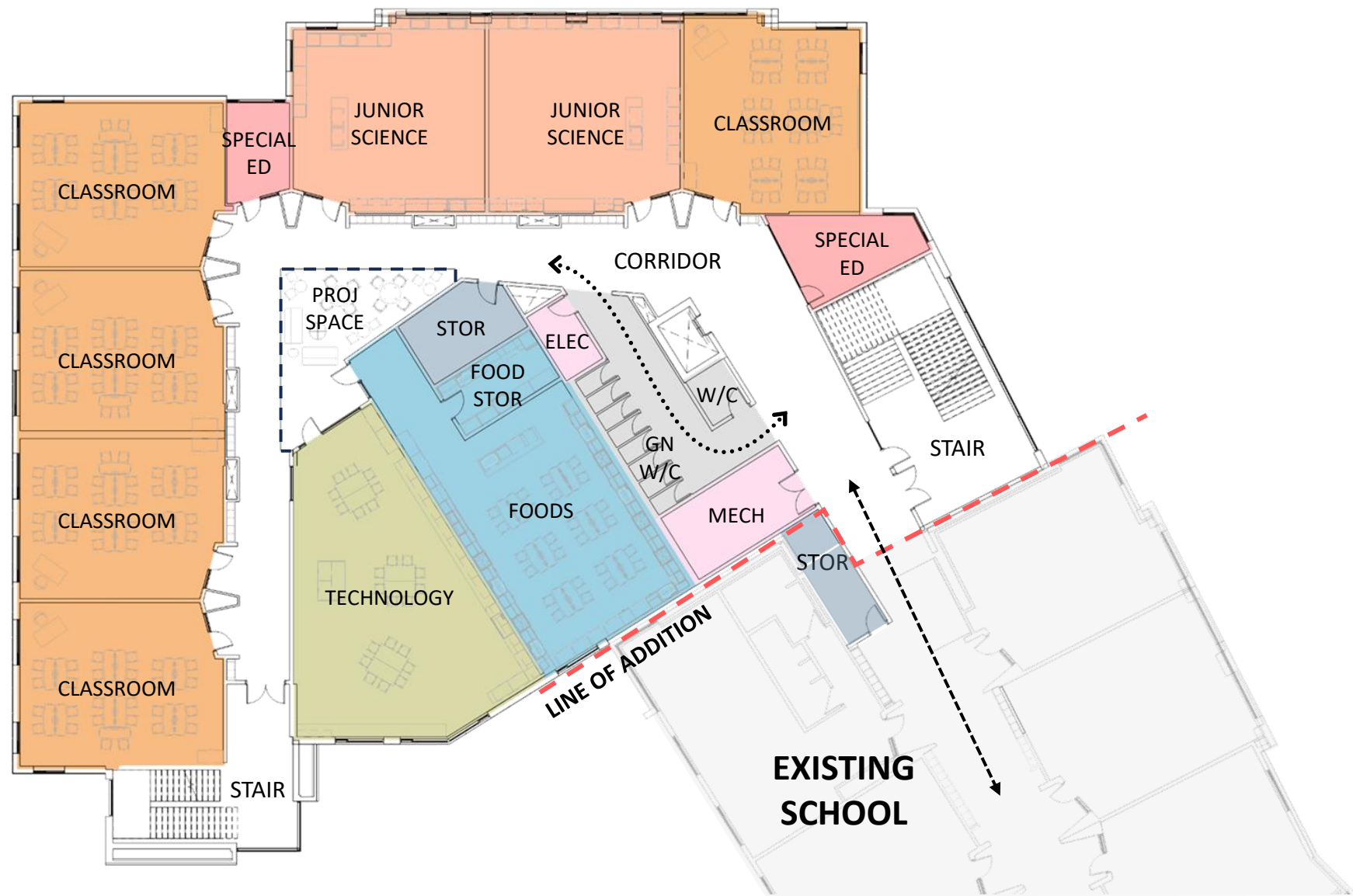
- Classroom
- Special Education
- NLC
- Project Space
- Gym
- Gym Ancillary
- Dance
- Technology
- Foods
- Science
- Art
- Learning Commons
- Washrooms
- Service Space
- Storage
- Circulation
- Childcare Play Area



SITE 048 – KWANTLEN PARK ADDITION
MAIN FLOOR PLAN

COLOR LEGEND

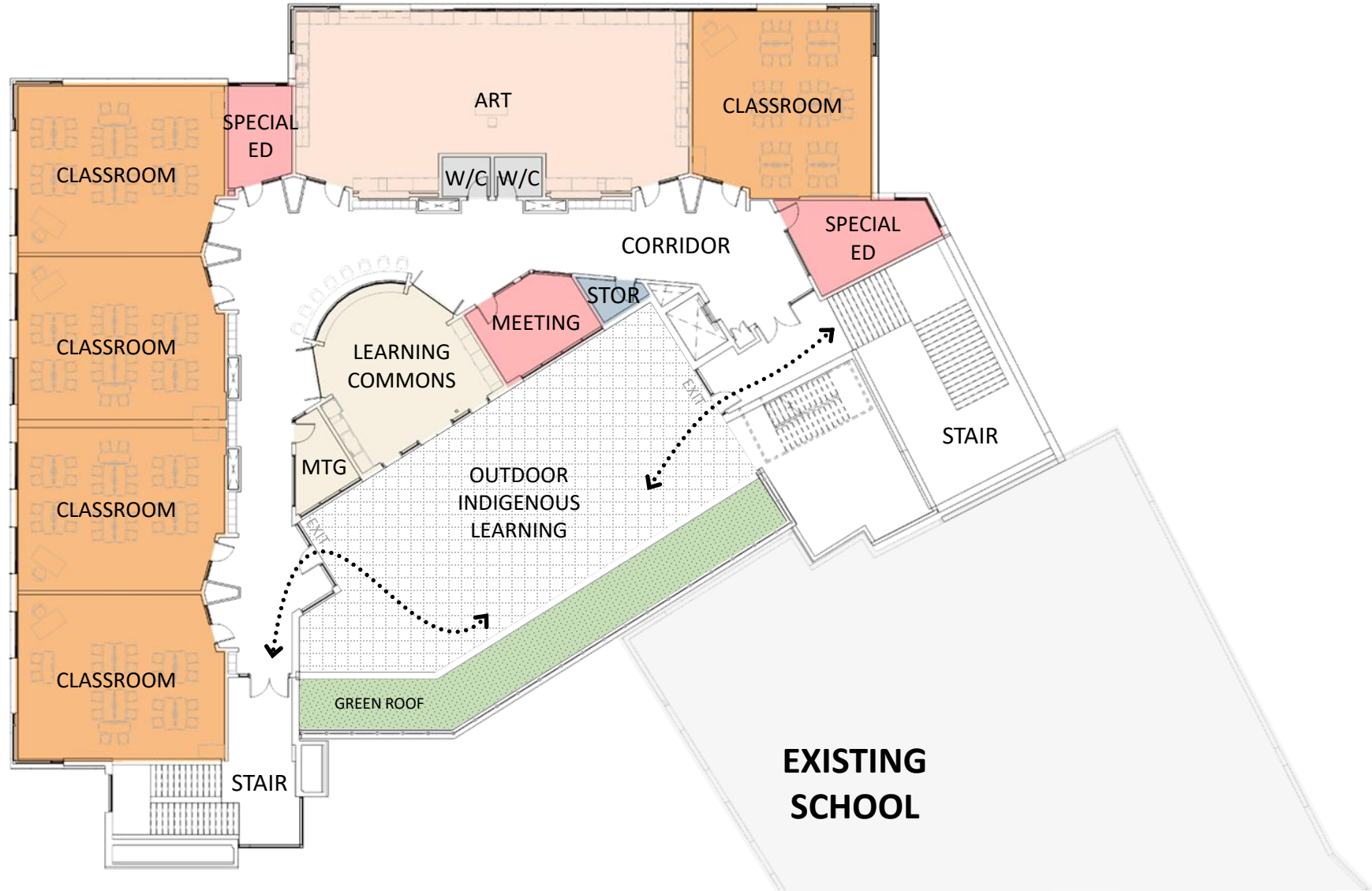
- Classroom
- Special Education
- NLC
- Project Space
- Gym
- Gym Ancillary
- Dance
- Technology
- Foods
- Science
- Art
- Learning Commons
- Washrooms
- Service Space
- Storage
- Circulation
- Childcare Play Area



SITE 048 - KWANTLEN PARK ADDITION SECOND FLOOR PLAN

COLOR LEGEND

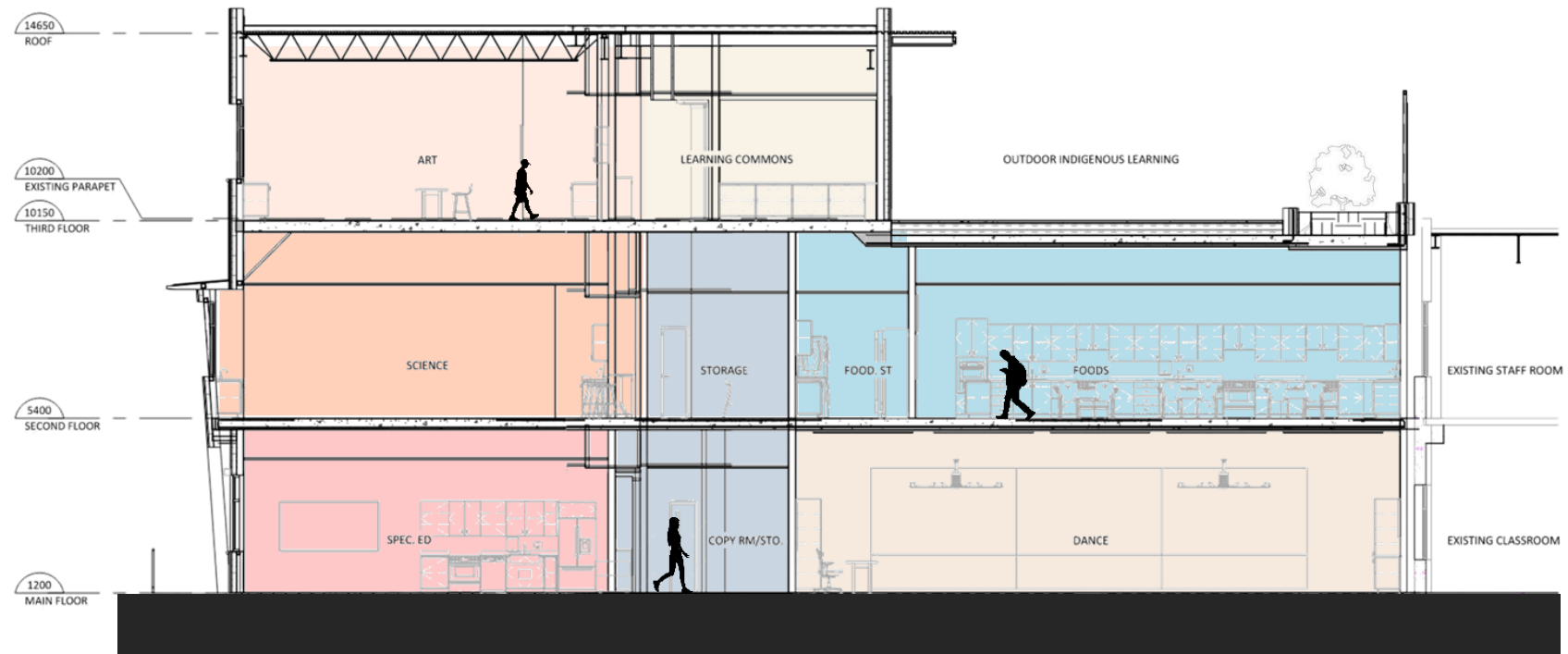
- Classroom
- Special Education
- NLC
- Project Space
- Gym
- Gym Ancillary
- Dance
- Technology
- Foods
- Science
- Art
- Learning Commons
- Washrooms
- Service Space
- Storage
- Circulation
- Childcare Play Area



SITE 048 – KWANTLEN PARK ADDITION
THIRD FLOOR PLAN

COLOR LEGEND

- Classroom
- Special Education
- NLC
- Project Space
- Gym
- Gym Ancillary
- Dance
- Technology
- Foods
- Science
- Art
- Learning Commons
- Washrooms
- Service Space
- Storage
- Circulation
- Childcare Play Area



SITE 048 – KWANTLEN PARK ADDITION

SECTIONS

Northeast Elevation



Northwest Elevation



Southeast Elevation

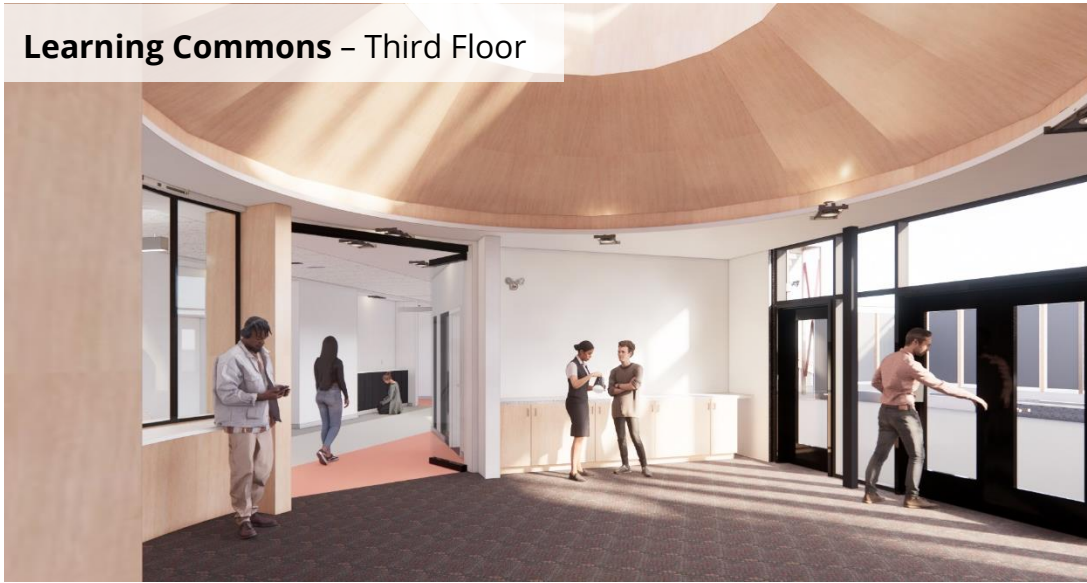


Southwest Elevation



SITE 048 – KWANTLEN PARK ADDITION
EXTERIOR

Learning Commons – Third Floor



Foods Room – Second Floor



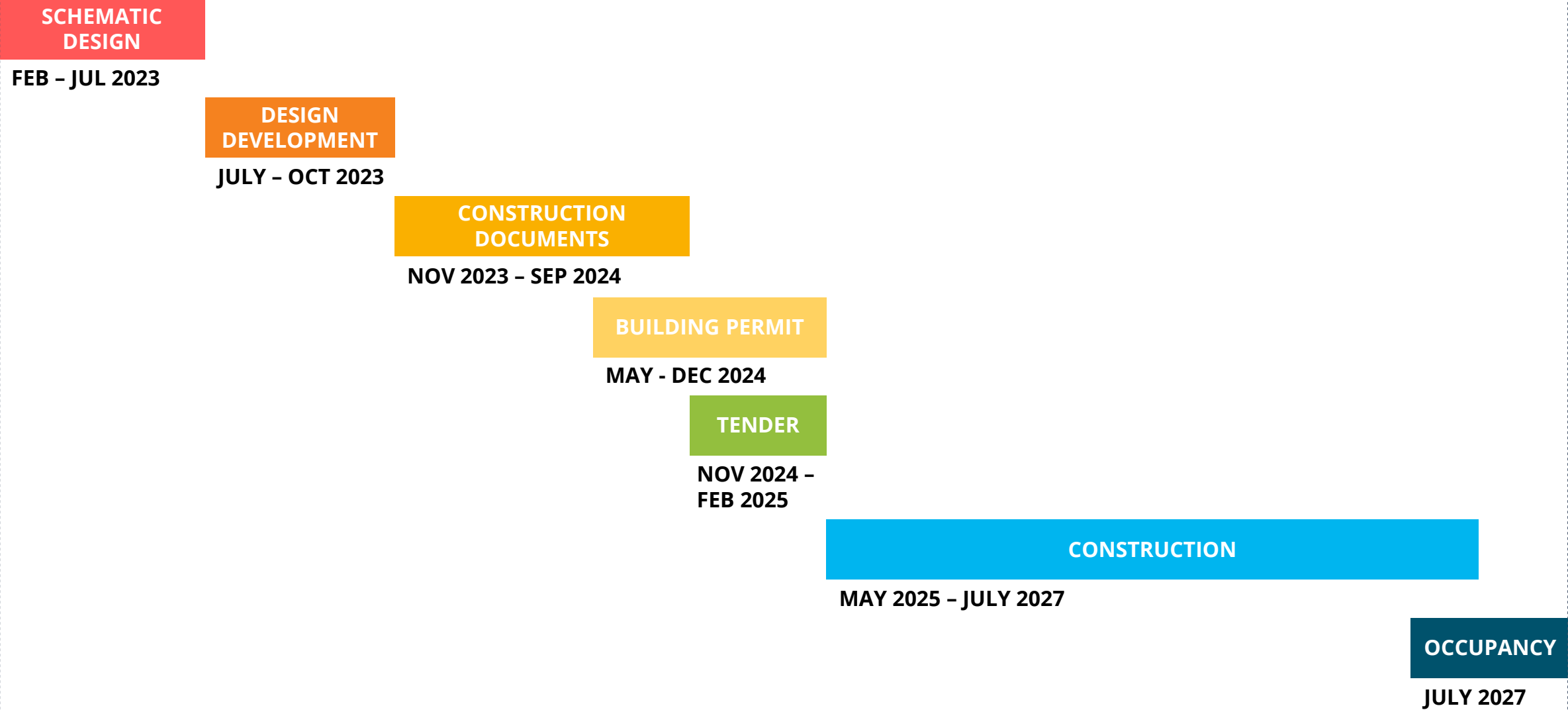
Technology – Second Floor

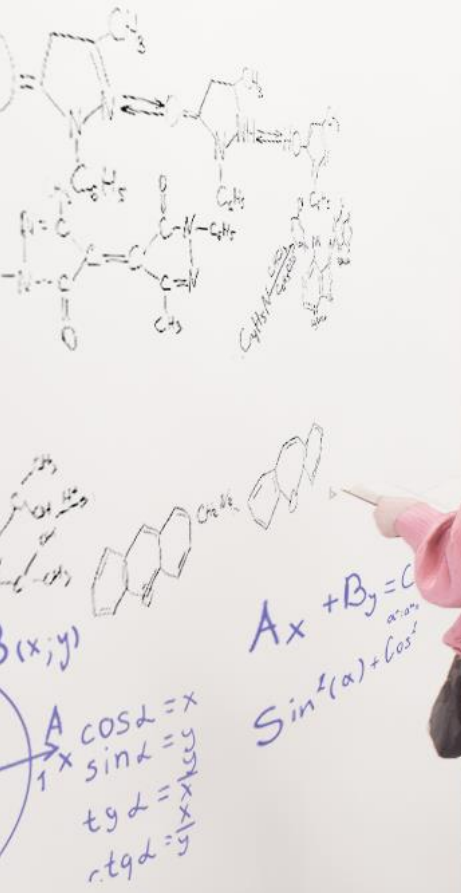


Corridor Space – Main Floor



PROPOSED SCHEDULE





THANK YOU