

Board of Education of School District No. 36 (Surrey)

Sketch Plan Presentation Fleetwood Park Secondary Addition

May 14, 2025



Introduction - Project Team + Steering Committee

SD36 Project Manager	<i>Autumn Sweet, Associate Director, Capital Projects Office (SD36)</i>
Steering Committee	<i>Lynda Reeve, Assistant Superintendent (SD36)</i> <i>Christy Northway, Assistant Superintendent (SD36)</i> <i>Lyn Daniels, Director of Instruction Indigenous Peoples (SD36)</i> <i>Jb Mahli, Director of Instruction Racial Equity (SD36)</i> <i>David A’Bear, District Principal (SD36)</i> <i>Jodie Perry, Principal, Fleetwood Park Secondary (SD36)</i> <i>Robert Dewinetz, Vice Principal, Fleetwood Park Secondary (SD36)</i> <i>Darren Bedard, Principal, Grandview Heights Secondary (SD36)</i> <i>David Baldasso, Principal, Fraser Heights Secondary (SD36)</i> <i>Dave Riley, Executive Director, Capital Projects Office (SD36)</i> <i>Autumn Sweet, Associate Director, Capital Projects Office (SD36)</i> <i>Wendy Crowe, Capital Project Manager (SD36)</i>
Architects	John Hemsworth Architecture Inc. <i>John Hemsworth</i>
Structural Engineers	Bush, Bohlman & Partners <i>Mark Anderson</i>
Mechanical Engineers	Rocky Point Engineering <i>Richard Corra</i>
Electrical Engineers	WSP <i>Andrew Tashiro</i>
Civil Engineers	Aplin & Martin Consultants <i>Meghn Khurana</i>
Landscape	Prospect and Refuge <i>Alyssa Semczyszyn</i>

Agenda

1. Site
2. Process
3. Floor Plans
4. Design
5. Schedule



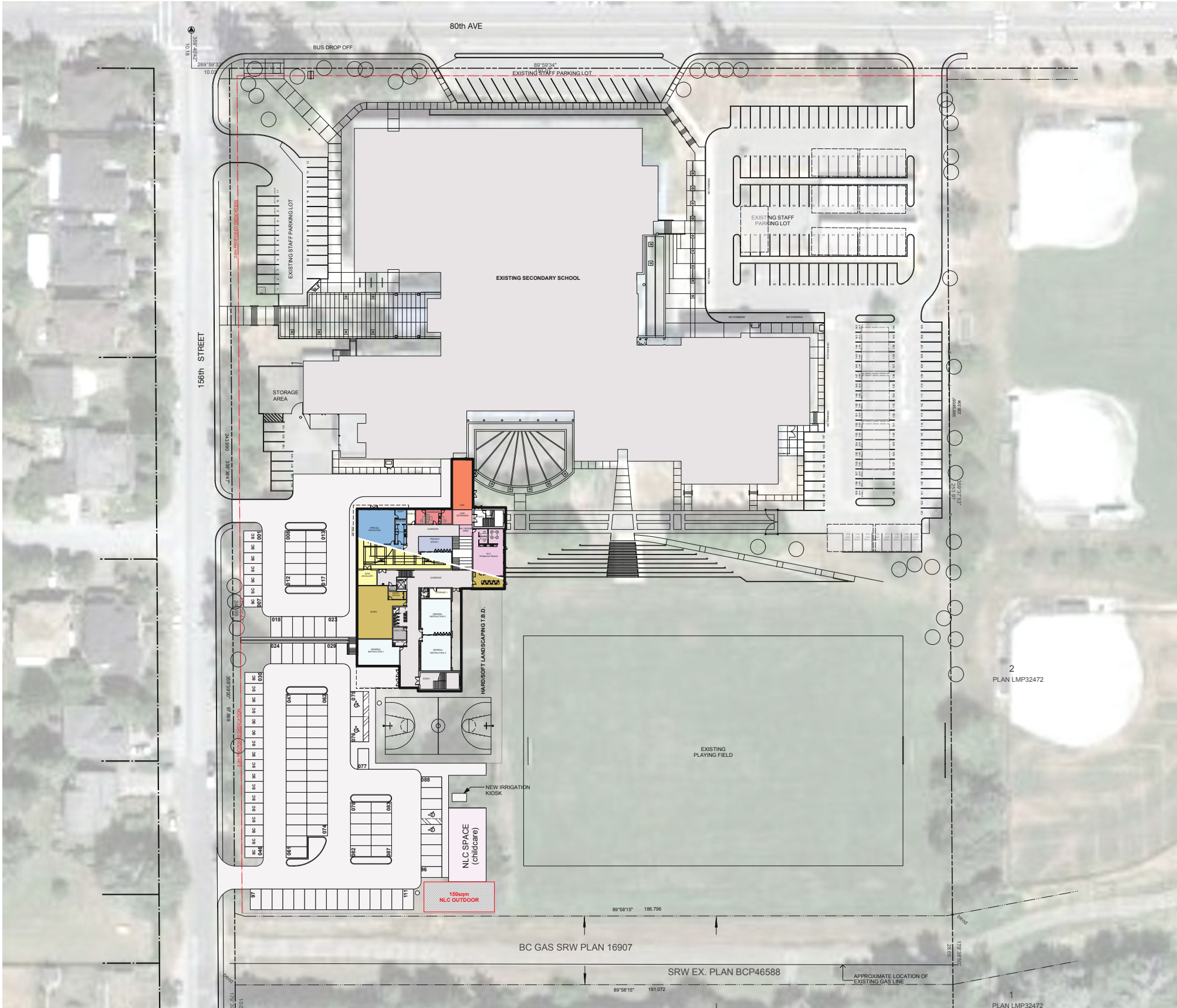
Site - Context Plan



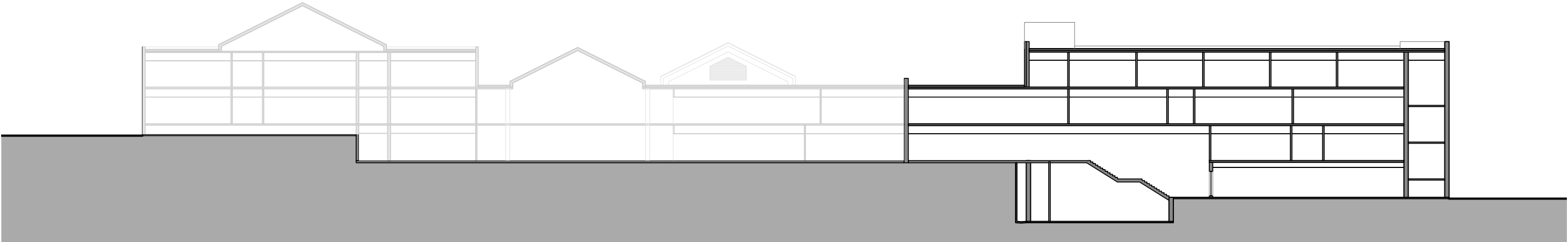
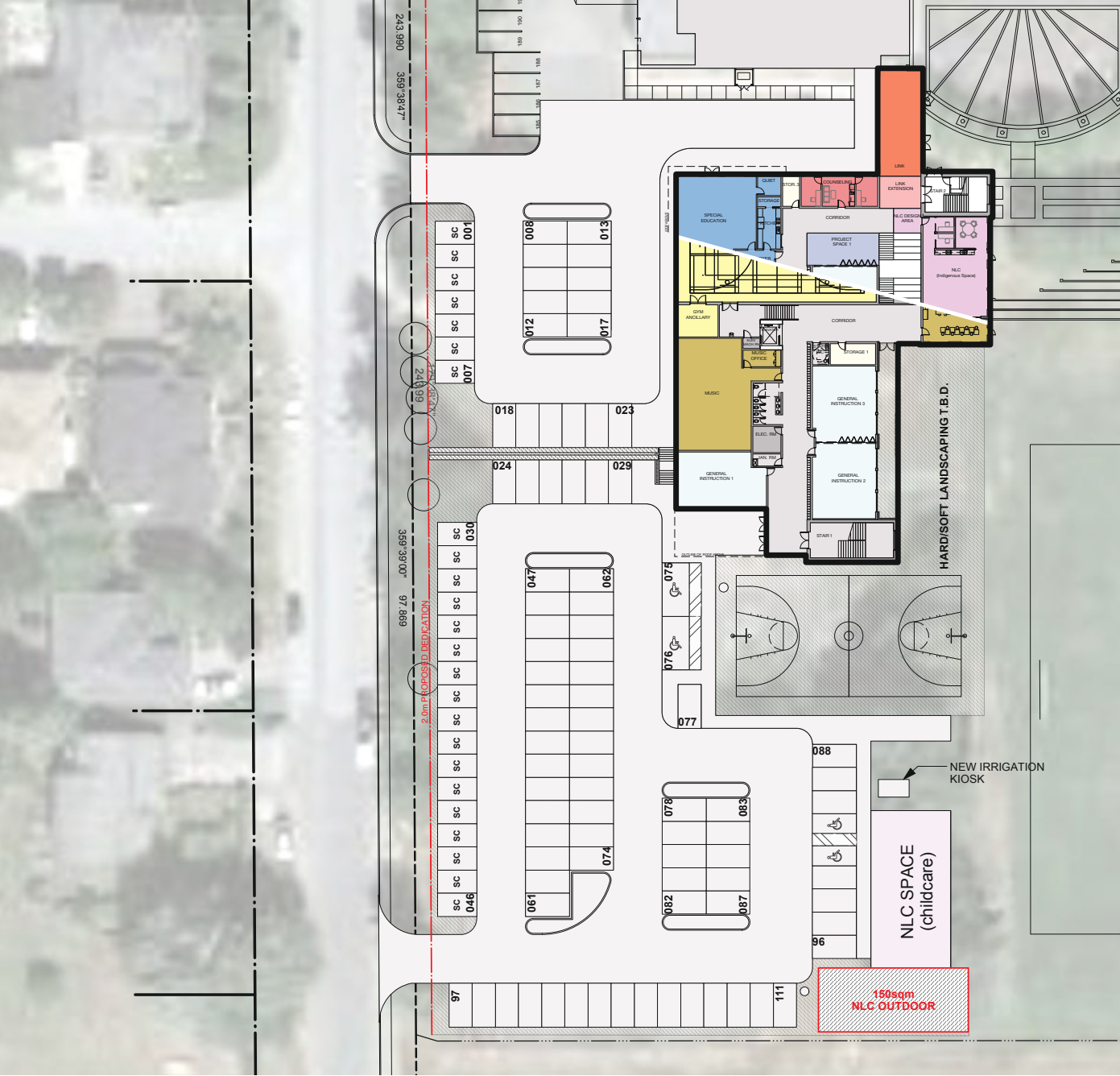
Process



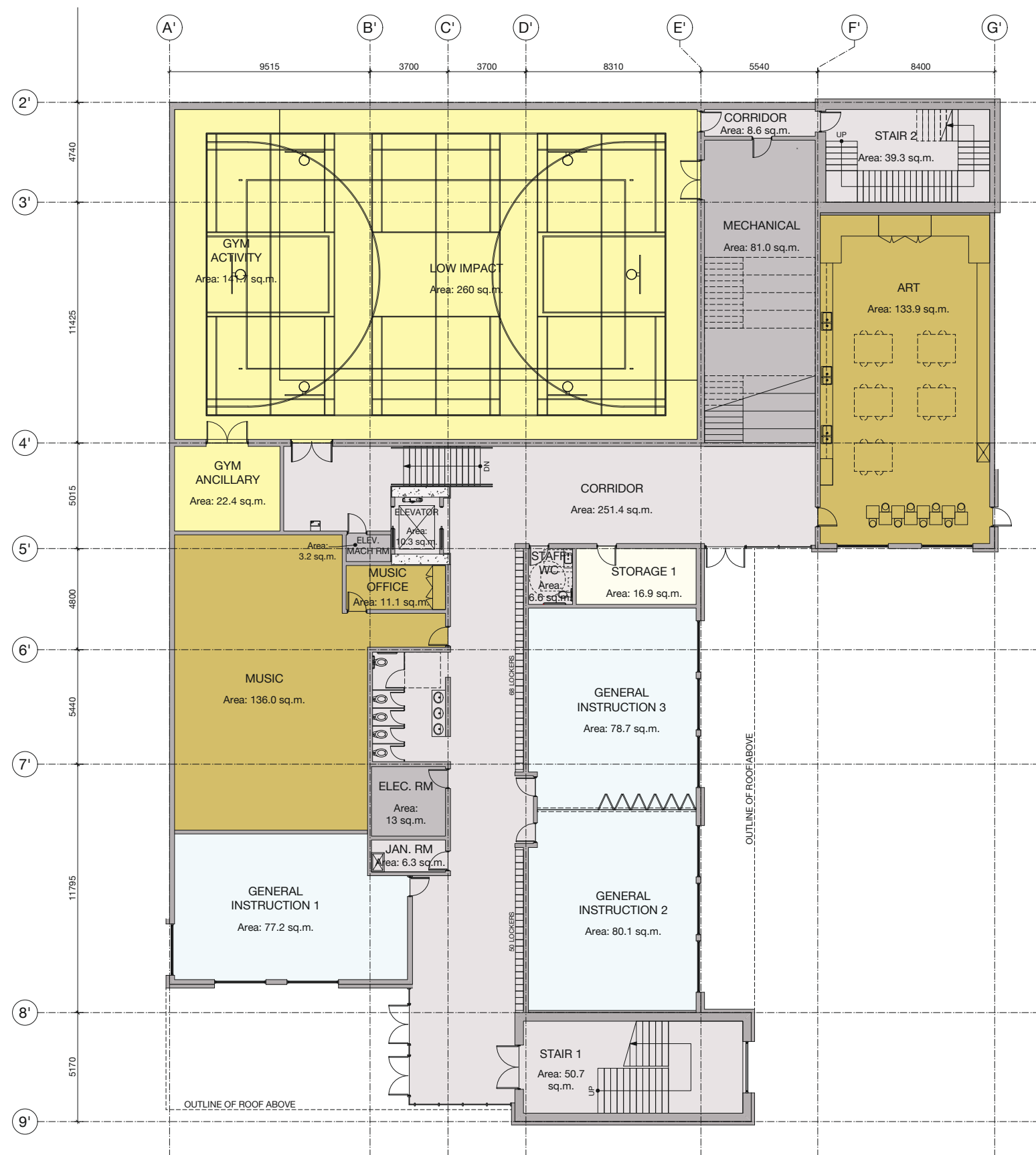
Site - Proposed Plan



Site - Proposed Plan

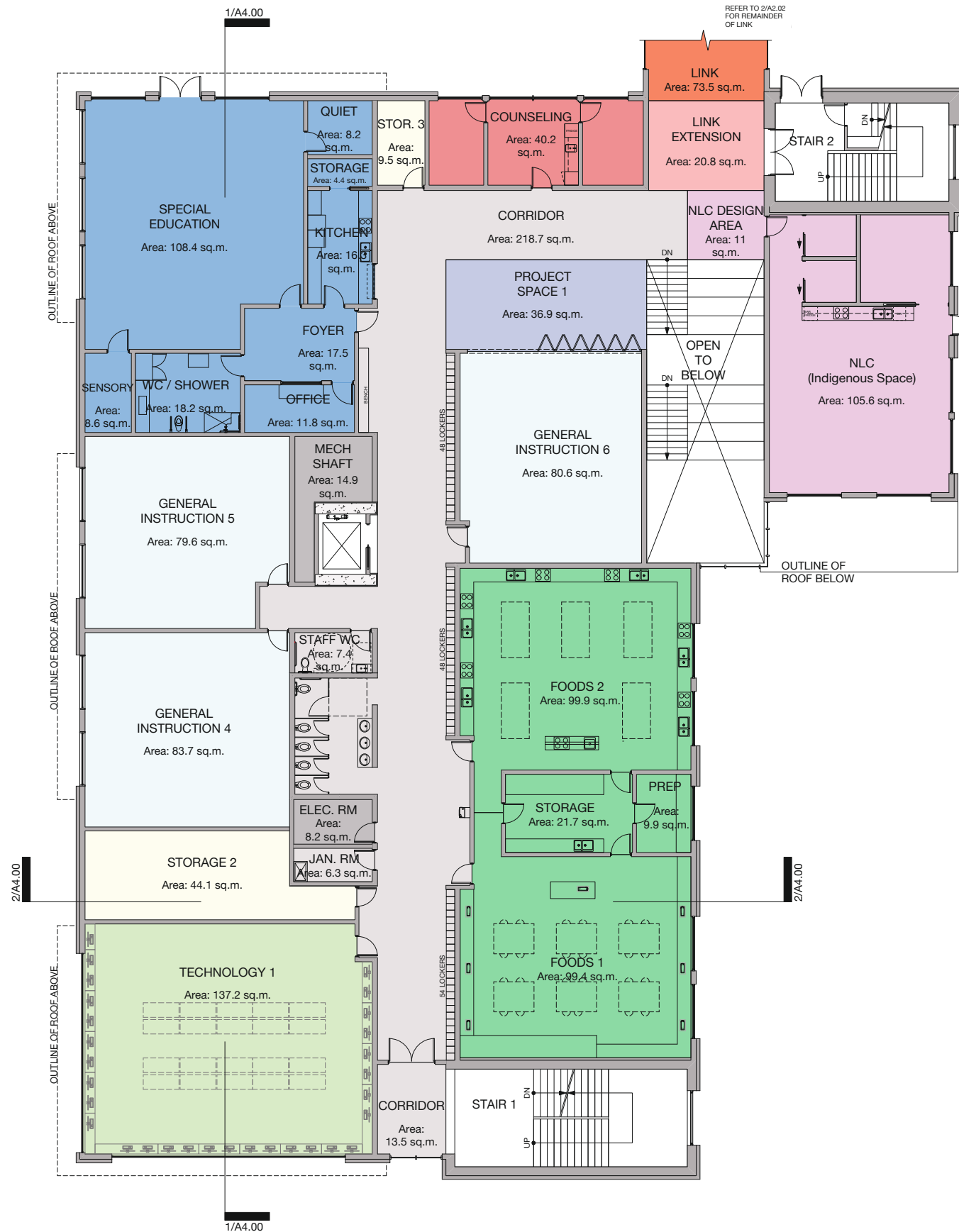


Floor Plan - Level 01



Modules	Design Aid Sheet (DAS)	10% Reduction to DAS	Current Plan
Low Impact Studio	260	234	260
Gym Activity	171	153.9	141.7
Gym Ancillary	47	42.3	22.4
Mech/Elec.	120	120	163.3
Music	180	162	147.1
Design Space	1,122	1,122	1,154.5
Storage	28	25.2	70.5
Special Ed.	186	167.4	193.6
Art	140	126	133.9
Counselling	35	31.5	40.2
Foods	320	288	230.9
Technology	420	378	350.2
Computers	360	324	319.6
Gen. Science	420	378	399.9
Project Space			182.5
Classroom	1,440	1,350	1,438
Total	5,249	4,902.3	5,248.3
L1 GFA			1,428.5
L2 GFA			1,205.4
L3 GFA			1,295.1
L4 GFA			1,319.7
		Total GFA	5,248.7
		Allowable GFA	5,249
		Difference	-0.3
Excluded Areas			
Link	180		147
Link Extension			44.6
NLC (Indigenous)			105.6
NLC Design Area			11

Floor Plan - Level 02



Modules	Design Aid Sheet (DAS)	10% Reduction to DAS	Current Plan
Low Impact Studio	260	234	260
Gym Activity	171	153.9	141.7
Gym Ancillary	47	42.3	22.4
Mech/Elec.	120	120	163.3
Music	180	162	147.1
Design Space	1,122	1,122	1,154.5
Storage	28	25.2	70.5
Special Ed.	186	167.4	193.6
Art	140	126	133.9
Counselling	35	31.5	40.2
Foods	320	288	230.9
Technology	420	378	350.2
Computers	360	324	319.6
Gen. Science	420	378	399.9
Project Space			182.5
Classroom	1,440	1,350	1,438
Total	5,249	4,902.3	5,248.3
L1 GFA			1,428.5
L2 GFA			1,205.4
L3 GFA			1,295.1
L4 GFA			1,319.7
		Total GFA	5,248.7
		Allowable GFA	5,249
		Difference	-0.3
Excluded Areas			
Link	180		147
Link Extension			44.6
NLC (Indigenous)			105.6
NLC Design Area			11

Floor Plan - Level 03



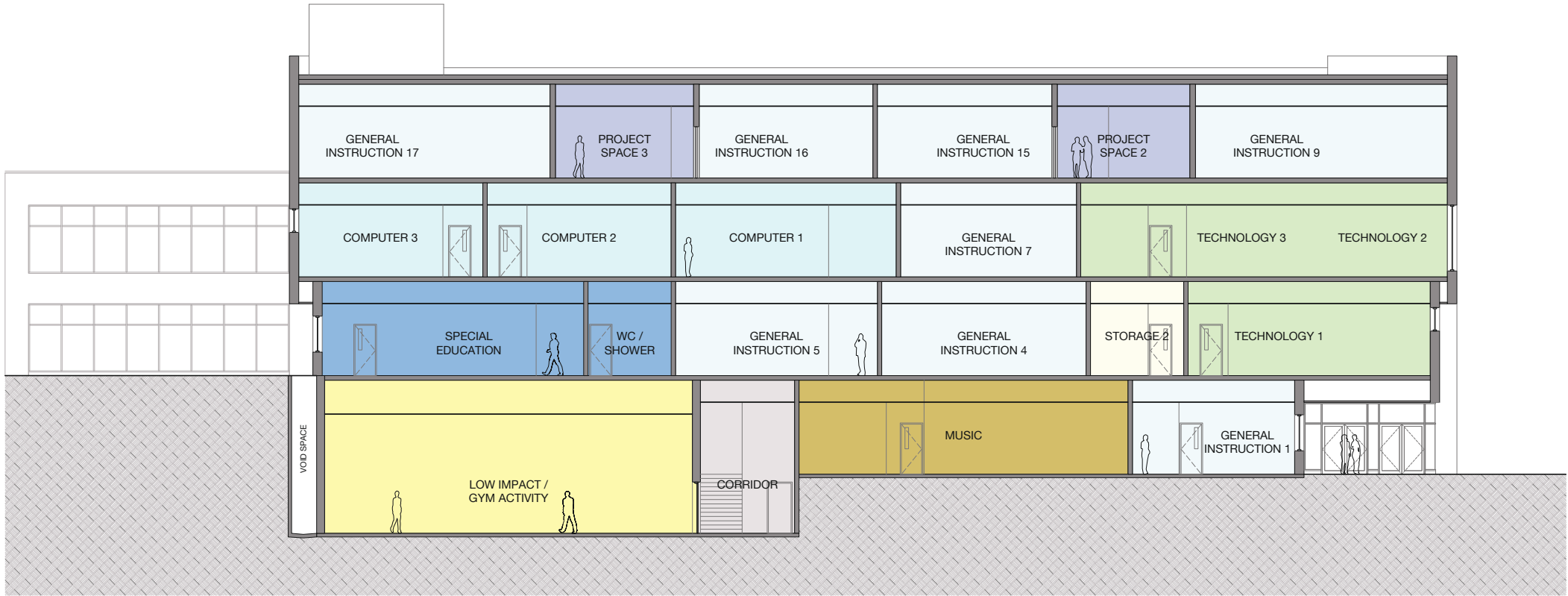
Modules	Design Aid Sheet (DAS)	10% Reduction to DAS	Current Plan
Low Impact Studio	260	234	260
Gym Activity	171	153.9	141.7
Gym Ancillary	47	42.3	22.4
Mech/Elec.	120	120	163.3
Music	180	162	147.1
Design Space	1,122	1,122	1,154.5
Storage	28	25.2	70.5
Special Ed.	186	167.4	193.6
Art	140	126	133.9
Counselling	35	31.5	40.2
Foods	320	288	230.9
Technology	420	378	350.2
Computers	360	324	319.6
Gen. Science	420	378	399.9
Project Space			182.5
Classroom	1,440	1,350	1,438
Total	5,249	4,902.3	5,248.3
L1 GFA			1,428.5
L2 GFA			1,205.4
L3 GFA			1,295.1
L4 GFA			1,319.7
		Total GFA	5,248.7
		Allowable GFA	5,249
		Difference	-0.3
Excluded Areas			
Link	180		147
Link Extension			44.6
NLC (Indigenous)			105.6
NLC Design Area			11

Floor Plan - Level 04

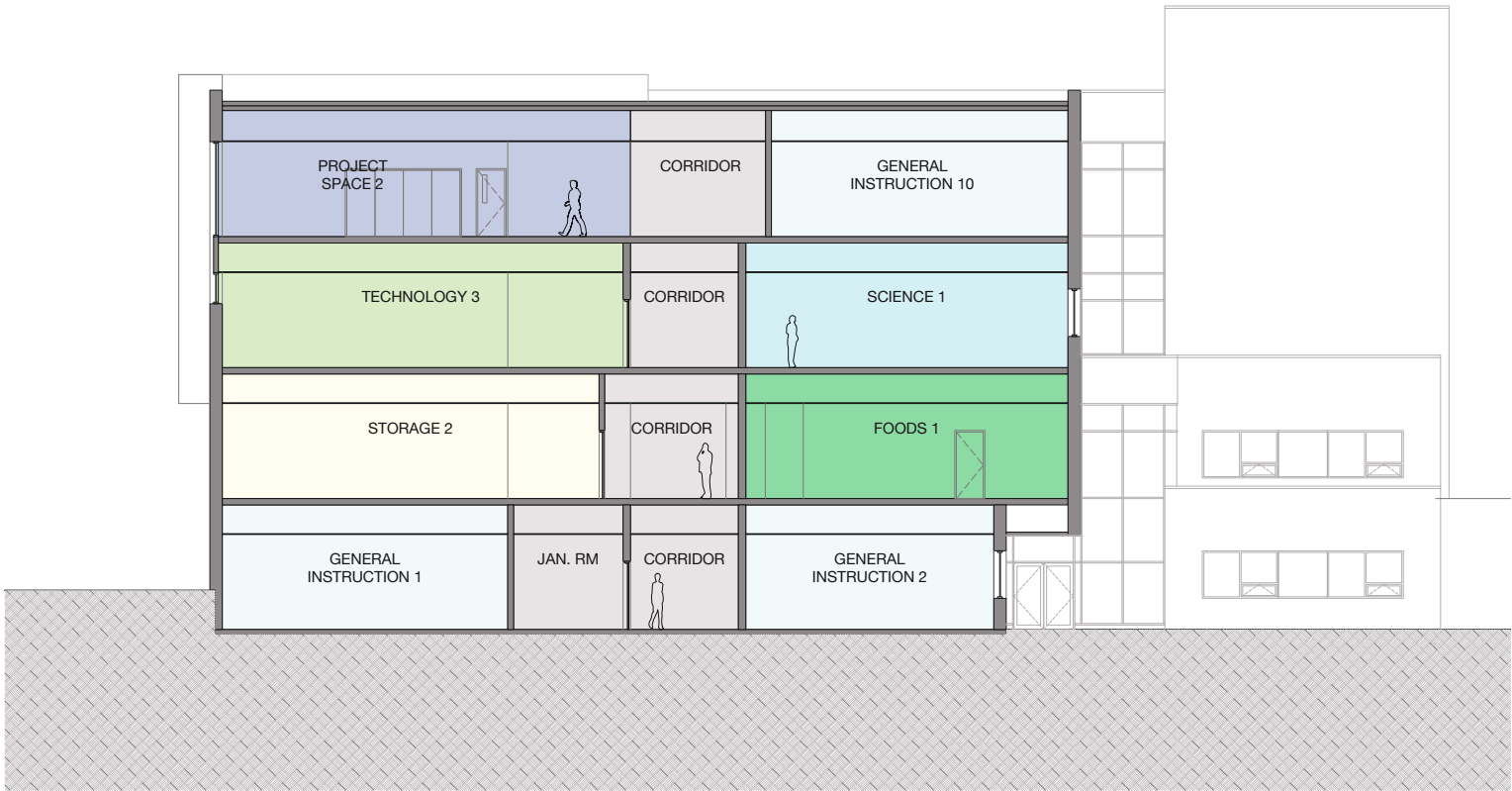


Modules	Design Aid Sheet (DAS)	10% Reduction to DAS	Current Plan
Low Impact Studio	260	234	260
Gym Activity	171	153.9	141.7
Gym Ancillary	47	42.3	22.4
Mech/Elec.	120	120	163.3
Music	180	162	147.1
Design Space	1,122	1,122	1,154.5
Storage	28	25.2	70.5
Special Ed.	186	167.4	193.6
Art	140	126	133.9
Counselling	35	31.5	40.2
Foods	320	288	230.9
Technology	420	378	350.2
Computers	360	324	319.6
Gen. Science	420	378	399.9
Project Space			182.5
Classroom	1,440	1,350	1,438
Total	5,249	4,902.3	5,248.3
L1 GFA			1,428.5
L2 GFA			1,205.4
L3 GFA			1,295.1
L4 GFA			1,319.7
		Total GFA	5,248.7
		Allowable GFA	5,249
		Difference	-0.3
Excluded Areas			
Link	180		147
Link Extension			44.6
NLC (Indigenous)			105.6
NLC Design Area			11

Section



1 North-South Section
1:100

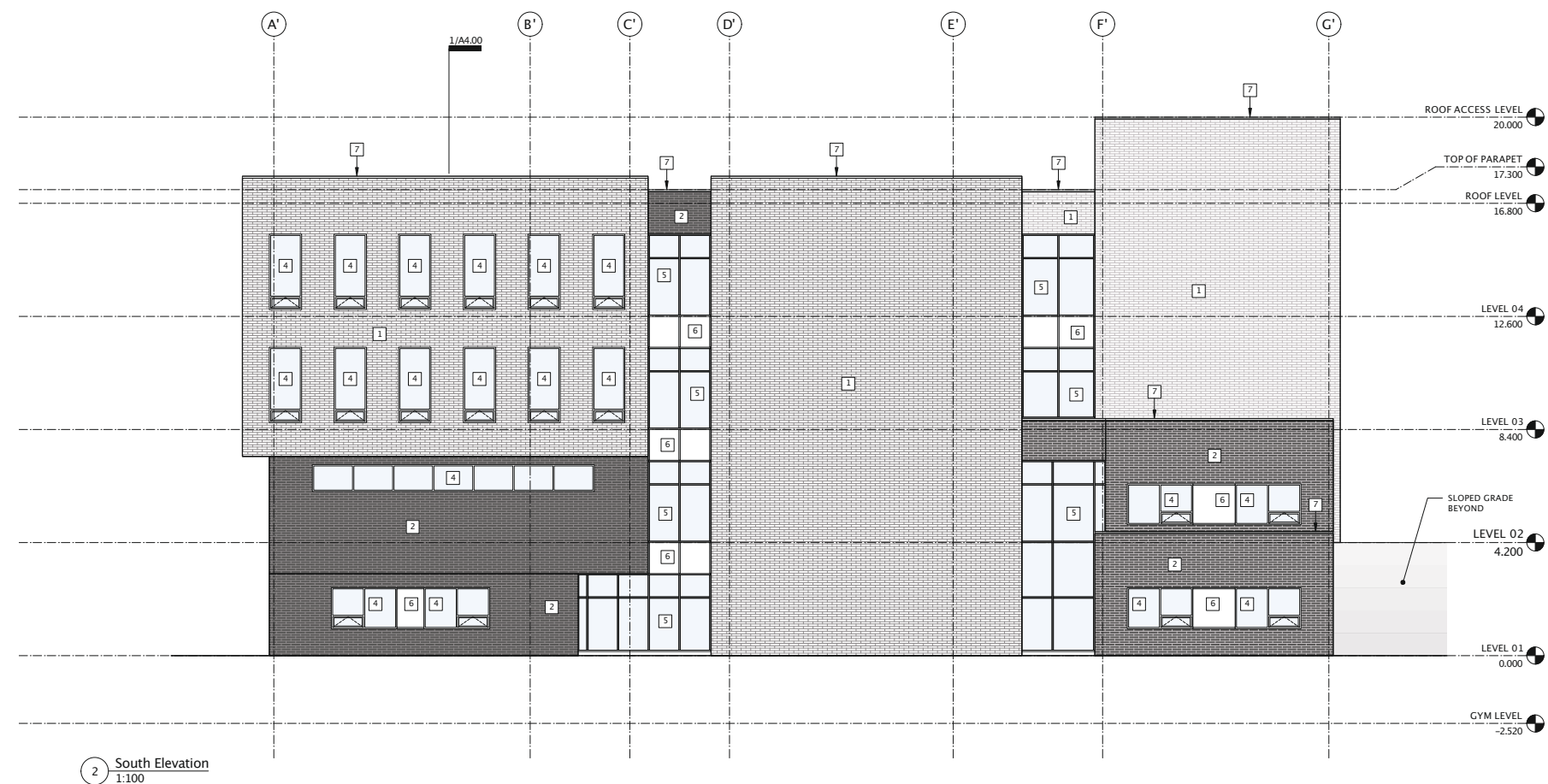
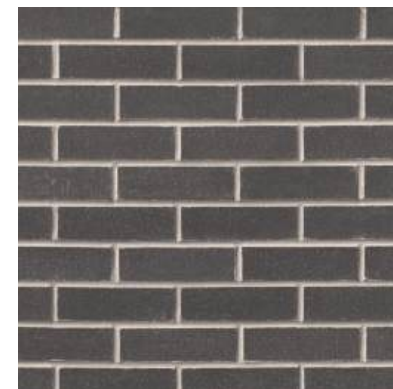


2 East-West Section
1:100

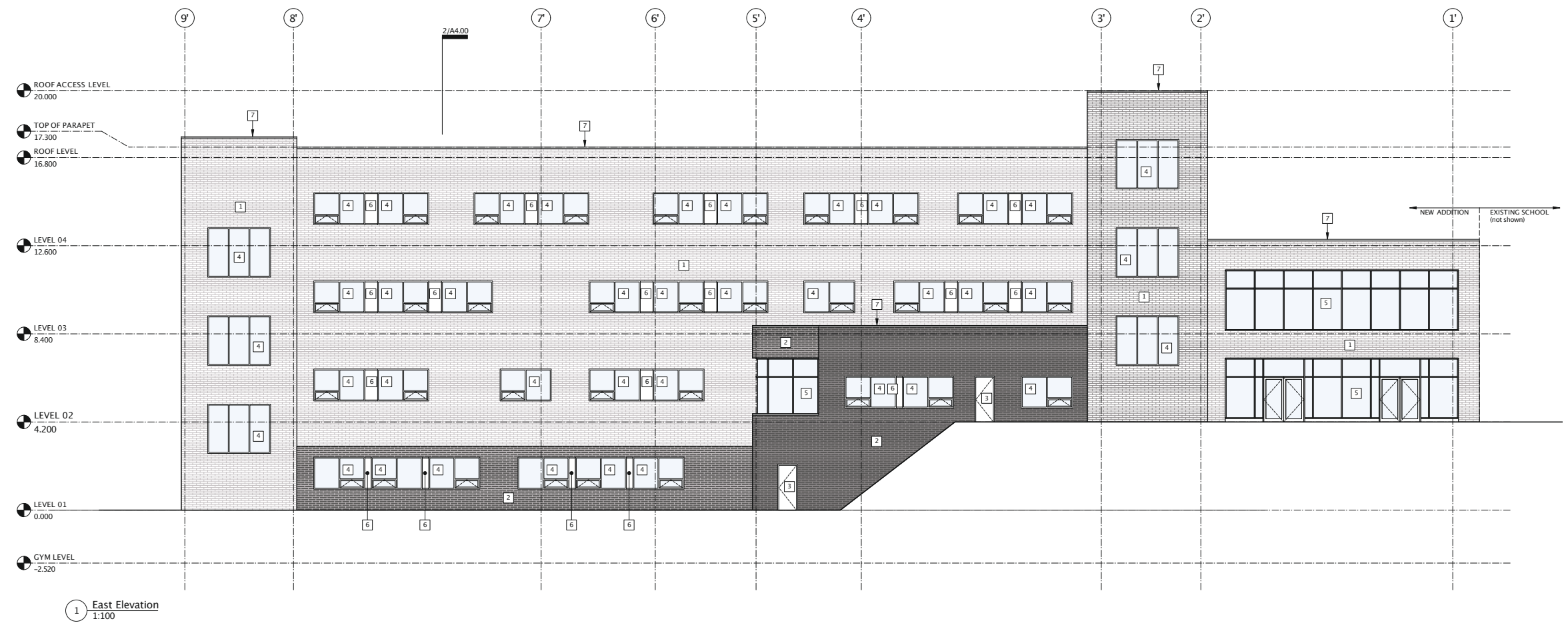
Elevations



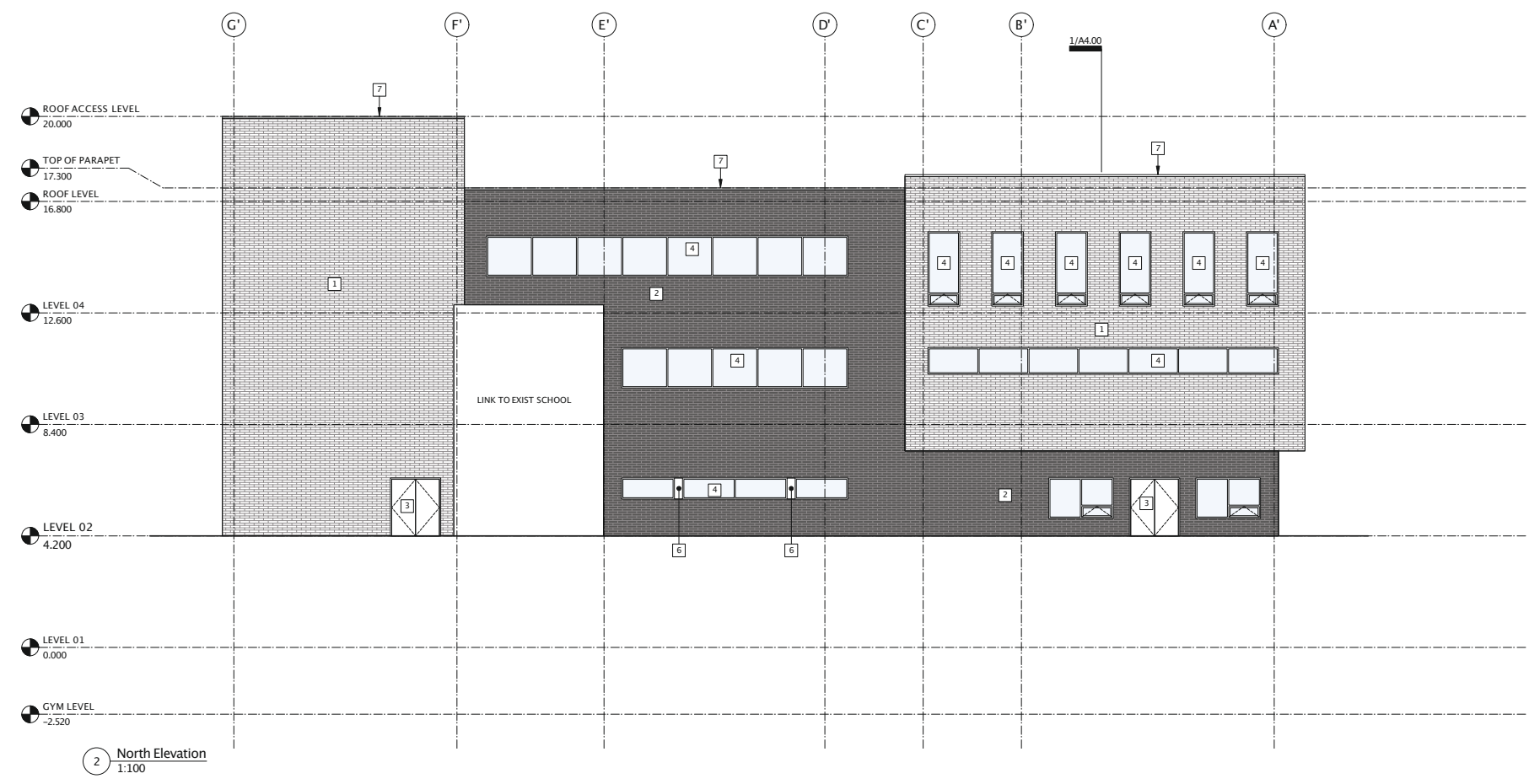
- EXTERIOR MATERIALS LIST**
- 1 MASONRY CLADDING (light colour)
 - 2 MASONRY CLADDING (dark colour)
 - 3 INSULATED PAINTED DOOR
 - 4 DOUBLE GLAZING IN ANOD. ALUMINUM WINDOW
 - 5 DOUBLE GLAZING IN ANOD. ALUMINUM CURTAIN WALL
 - 6 SPANDREL PANEL
 - 7 PRE-FINISHED METAL FLASHING



Elevations

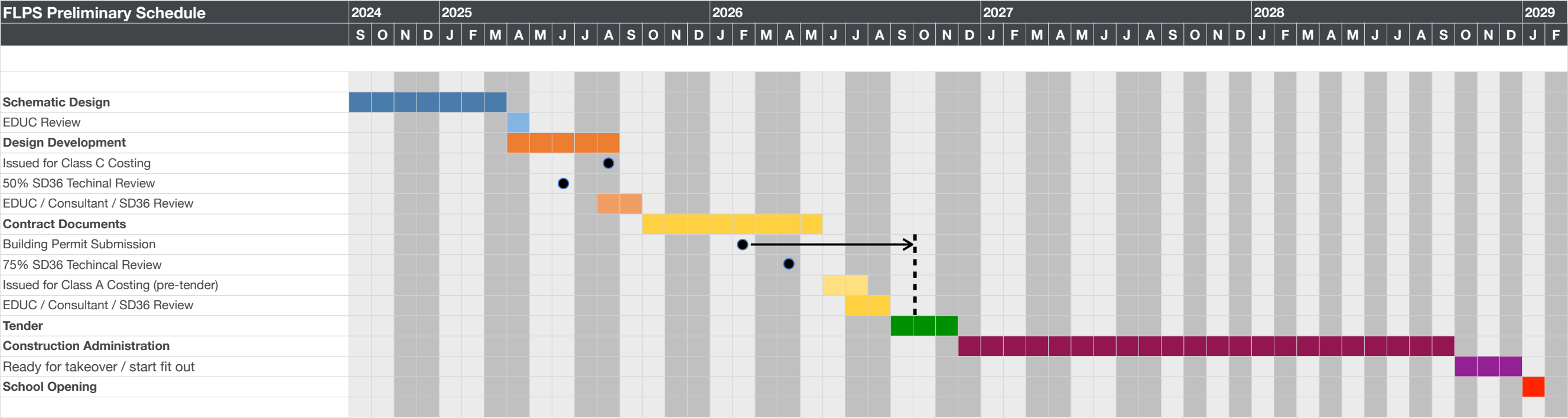


- EXTERIOR MATERIALS LIST**
- 1 MASONRY CLADDING (light colour)
 - 2 MASONRY CLADDING (dark colour)
 - 3 INSULATED PAINTED DOOR
 - 4 DOUBLE GLAZING IN ANOD. ALUMINUM WINDOW
 - 5 DOUBLE GLAZING IN ANOD. ALUMINUM CURTAIN WALL
 - 6 SPANDRAL PANEL
 - 7 PRE-FINISHED METAL FLASHING



Schedule

Fleetwood Park Secondary School Addition



NOTES:
Schedule is preliminary and subject to change

Thank You

Questions?

