
April 16, 2021

Woodland Park Elementary

9025 158 St, Surrey, V4N 2Y6

T: 604-589-5957

www.surreyschools.ca/woodlandpark

Principal: Mrs. L. Chambers

Acting Vice Principal: Mr. M. Speak

Head Clerk: Mrs. M. Hamelin

Clerk: Mrs. S. Imran

Dear Parents/Guardians of Grades 4 & 7,

Student Learning Survey 2020/2021

The Provincial Student Learning Survey is unique in its scope, size and usefulness to schools. It gathers information from parents/guardians/caregivers, teachers and students on topics related to school environment, safety, and achievement. The information is used for planning in individual schools and provides a district and provincial perspective.

The Student Learning Survey will be administered to students in grades 4 and 7, their parents / guardians, and all school staff. We encourage our community to participate in this survey, as the results are important in identifying and celebrating current strengths, as well as determining where the school needs to focus improvement. The surveys contain standard questions for the Province – in addition, questions from the school and/or district that focus on local conditions or issues may be included.

The parent survey can be completed electronically and can be accessed on the internet at http://www.bced.gov.bc.ca/sat_survey. Any computer with an internet connection can be used, and access to the survey is simple and secure. Please note, the survey will be available until April 30th. Please contact the web survey provider (AWIS) if you have technical difficulties; call toll free: **1-866-558-5339** or email support@awinfosys.com. We sincerely appreciate your input and thank you in advance for your participation.

Warm Regards,
Mrs. Lisa Chambers

New Early Dismissal Days

There will be three additional one-hour early dismissal dates for the 2020-2021 school year: **April 30th, May 14th and June 7th**. These early dismissal days are for staff to review and revisit health and safety plans, discuss recommendations, and implement or adjust any COVID-19 mitigation strategies. **Please mark your calendars.**

Reminder our school playground remains CLOSED both before and after school. Thank you for your continued support!!!



Upcoming Events

April 15

Class Photos Cancelled due to Health & Safety regulations

April 21

Ready, Set, Learn

Administrative Professional's Day

Thank you Mrs. Hamelin & Mrs. Imran for all you do for our school community!

April 22

Early Dismissal @ 1:35pm

April 30

Early Dismissal @ 1:35pm (H&S)

.....

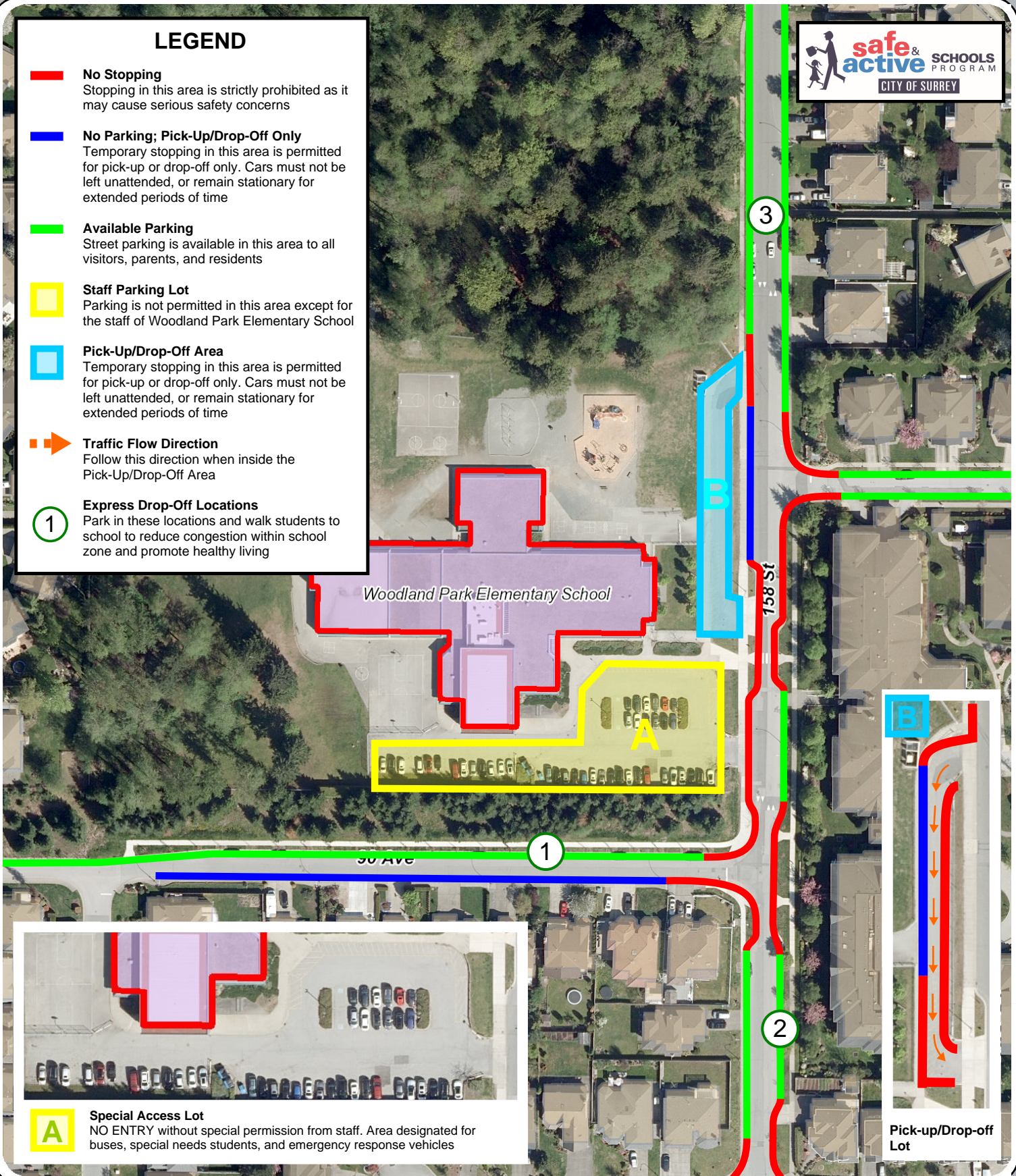
Student Drop-Off /Pick-up Changes

Thank you to all of our parents who provided feedback via our survey regarding our morning drop off and after school pick up procedures at Woodland Park. Your feedback was consistent with the staff. Starting **Monday, May 3rd**, we will be closing the staff parking lot during morning drop-off and after school pick-up.

Please see attached map that indicates parent designated parking areas. We also want to remind parents that the drop off area is for drop off and pick up only. Staff will be available to assist with this transition. Your cooperation and understanding are appreciated!

LEGEND

- **No Stopping**
Stopping in this area is strictly prohibited as it may cause serious safety concerns
- **No Parking; Pick-Up/Drop-Off Only**
Temporary stopping in this area is permitted for pick-up or drop-off only. Cars must not be left unattended, or remain stationary for extended periods of time
- **Available Parking**
Street parking is available in this area to all visitors, parents, and residents
- Staff Parking Lot**
Parking is not permitted in this area except for the staff of Woodland Park Elementary School
- Pick-Up/Drop-Off Area**
Temporary stopping in this area is permitted for pick-up or drop-off only. Cars must not be left unattended, or remain stationary for extended periods of time
- ➡ **Traffic Flow Direction**
Follow this direction when inside the Pick-Up/Drop-Off Area
- 1 **Express Drop-Off Locations**
Park in these locations and walk students to school to reduce congestion within school zone and promote healthy living



A

Special Access Lot
NO ENTRY without special permission from staff. Area designated for buses, special needs students, and emergency response vehicles

Pick-up/Drop-off Lot

Parking Regulations: Woodland Park Elementary School



The data provided is compiled from various sources and IS NOT warranted as to its accuracy or sufficiency by the City of Surrey.
This information is provided for information and convenience purposes only. Lot sizes, legal descriptions and encumbrances must be confirmed at the Land Title Office.