



Introduction

Welcome to Biology 11. You will find that this is a **challenging course** in which you will learn innumerable interesting and exciting facts and theories about the processes and diversity of life.

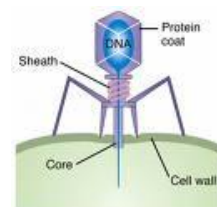
The work load, you will soon find, is **considerably higher** than in Science 10. This is a course that contains a **great deal of information**. However, with **perseverance, hard work, and good study habits**, you will do well in Biology 11.

It is my hope that you will leave this course with a greater appreciation for the importance of Biology, and a stronger personal interest in all the processes of life. As the material in this course can be intellectually challenging, I **strongly urge** you to **keep up with all homework, reading, and assignments** and, **most importantly**, see me for extra help and clarification as necessary. I wish you the **best of luck** in this most worthwhile endeavour!



Classroom Expectations

1. Arrive on time and be prepared to participate
2. Complete all assignments on time and attend all classes
3. Respect a working and learning environment
4. Practice safe lab procedures to maintain personal and peer safety
5. No food, musical devices or cell phones are permitted (healthy drinks are allowed)



Materials

Highlighters, pencils, erasers, pens, pencil crayons, glue stick, scissors, and a binder.

Generalized Unit Overview

Topic	Chapter
Introduction & Scientific Method	1
Microscope	2
Adaptation and Evolution	14
Taxonomy	15
Viruses	17
Microbiology	17
Algae/Mosses/Ferns	20-21
Plant Biology	22-25
Animal Biology	26-33
Ecology (Within the entire course)	Within the course



Evaluation

- Your overall mark in Biology 11 is based on two separate marks: the mark you earn in class with me (worth **80% of your overall mark**) for the course. Allow me to call this 80% your "in-school mark." Your **Final Exam** will count for the other **20% of your overall mark**.
- For your in-school mark, **tests and quizzes will account for 70%**.
- **Labs and assignments** will account for the remaining **30%** of your in-school marks
- The following will be the marks breakdowns:
A=86-100%, B=73-85%, C+=67-72%, C=60-66, C-=50-59%, D=40-49%, E=0-39%

Important notes

- **Marks will not be given for assignments handed in after the work has been reviewed in class.** You are responsible for catching up and asking for missed work if you were away.
- Missed exams can only be made up if i) you notify the teacher ahead of time that you will be away for a **VALID** reason *or* ii) your parent or guardian **phones to confirm you are sick** the day of the exam and cannot attend school *and* iii) you produce a note from your parent, guardian, or physician which acceptably explains your absence (subject to verification). **DON'T MISS TESTS** without first contacting me with a valid reason. I can be contacted at:

Email: mangat_m@sd36.bc.ca

Phone: 604-595-8890 extension 2212

Good Luck! I wish you much success and enjoyment in your studies!