



# ÉCOLE PEACE ARCH ELEMENTARY

## Parent Advisory Council (PAC)

PAC Email: peacearchPACnews@gmail.com  
School Phone: 604-536-8711

November 7, 2018

# Playground Replacement Project FAQ

As we ramp up our fundraising efforts for our upcoming playground replacement, your Peace Arch PAC would like to answer a few questions we've had from parents, and provide a transparent overview of our fundraising and replacement goals.

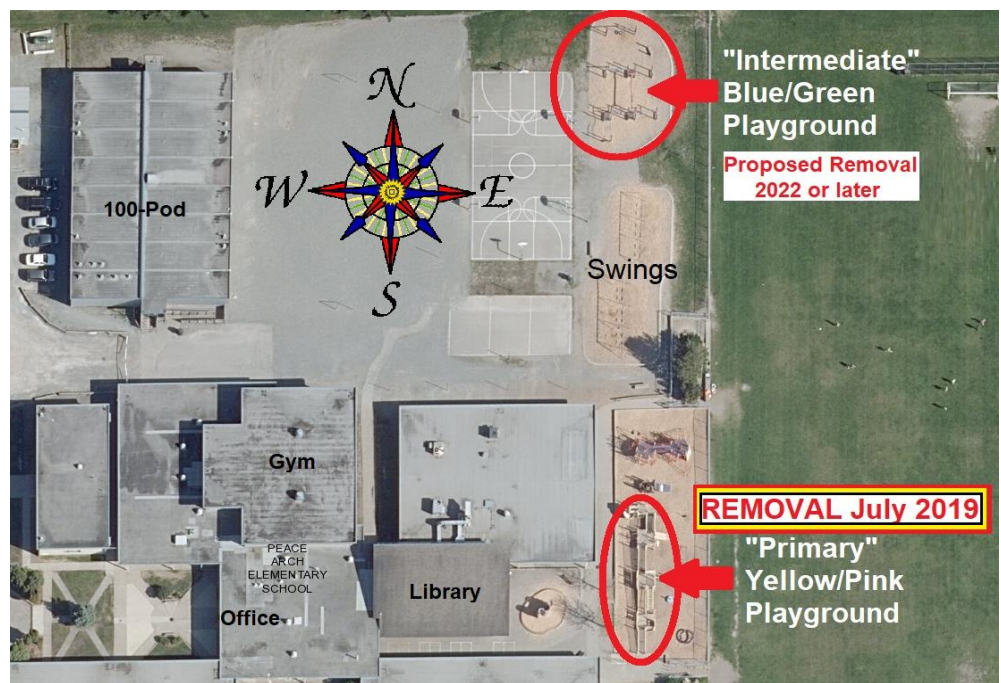
### 1. Why is our playground being removed?

Our most frequent question! Here's a quick history, and the direct answer from the School District:

- **Sept. 2016** – PAC was advised that the School District had given 1<sup>st</sup> notice that the yellow/pink south portion of the playground would be due for mandatory removal in approximately 3 years. The District gives a school a few years' advance notice so their PAC can begin fundraising for a replacement.
- **Feb. 2017** – The District Manager of Grounds Maintenance advised Peace Arch that the yellow/pink playground was indeed on the District's list for removal in 2019. He added that the north-most blue/green playground, including log roll & tire swing would *likely* be intended for removal some time during 2021/22.
- **Oct. 2018** – Peace Arch received 2<sup>nd</sup> official notification that the yellow/pink playground is intended for removal in July 2019, and the blue/green northern playground is proposed for 2022 or later.
- From the Surrey School District's letter: *"The life expectancy of playground equipment can vary greatly depending on the type of material the unit is constructed of and the amount of use the unit receives. To support student safety, the district's Grounds Maintenance Department has an annual playground inspection program. We have performed an inspection on the playground equipment at your school and unfortunately, have discovered signs the equipment is becoming unserviceable and is expected to soon deteriorate to a point that would compromise the safety of students."*

### 2. Which part of the playground are we talking about?

The northern-most blue and green playground, including wooden log roll and tire swing, will *likely* be intended for removal in 2022 or beyond. We have **not** officially been advised of its impending removal, but consider it prudent to fundraise for both this section AND the southern yellow/pink playground at the same time. **The yellow/pink section in the south-east corner of the school property WILL BE removed in July 2019, only 8 months from now.**



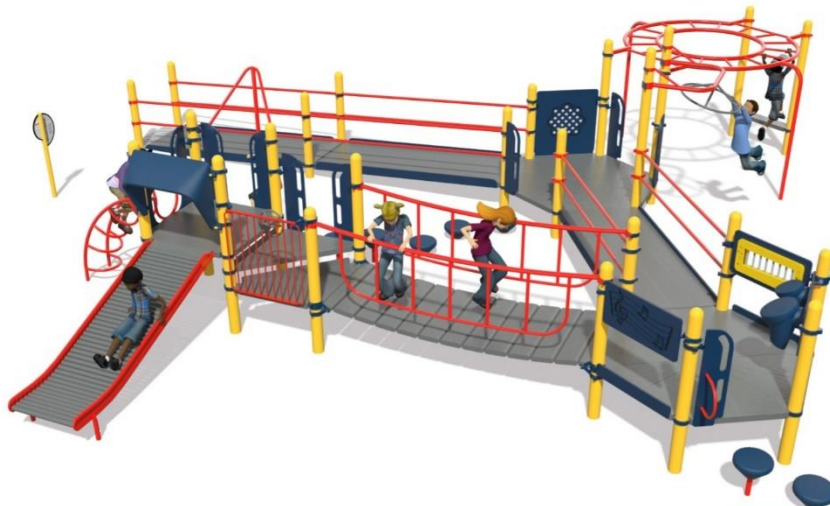
### 3. How did PAC choose Habitat Systems to design and install the playground replacement?

There are only 4 playground vendors approved by the Surrey School District to supply institutional grade playground equipment to Surrey schools, 2 of which are widely used by schools in our area. These vendors were contacted by our PAC in 2017 and only Habitat returned our request. Habitat's products fit well with our values and Habitat provides support from start to finish (i.e. user requirements, conceptual design, fundraising support, final design, site preparation, installation, etc.).

### 4. How much will it cost, and why is it so expensive?

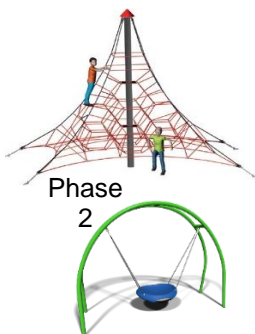
The current estimate we have from Habitat Systems is **\$150,000 for BOTH phases of the project...**

To replace BOTH the southern yellow/pink "primary" structure in 2019 (Phase 1), AND the northern blue/green "intermediate" structure in 2022+ (Phase 2). We knew playground fundraising would be a difficult task, and we didn't want our parent community to suffer from "fundraising fatigue" by running two large campaigns only a couple of years apart. So we are currently fundraising for the *combined amount* of the two replacement projects. **The diagram that appears in our fundraising letter and here, shows the proposed design for the Phase 1 replacement only, which is expected to cost \$90k-\$100k.**



Peace Arch Elementary Proposal for Phase 1 - Summer 2019 

### 5. Is this the final design for Phase 1, and what's the proposed design for Phase 2?



Peace Arch is not locked into the above design for Phase 1, nor are we locked in to the expected cost of \$150k. Design modifications and refinements are on-going and parents are encouraged to join the Playground Committee and come out to meetings to have a say in the preferred final design. We continue to consult with school staff, admin, and students on the design of both phases. Initial ideas for Phase 2 (the blue/green north structure) include a large "spider web" lunar burst rope climbing tower and "oodle swing" (disc swing), which will require site modifications as well. **Expected cost of Phase 2 = \$50k-\$60k.**

### 6. What happens if we can't raise the \$150,000?

If we are unable to raise the required funds in time for the July 2019 replacement, it is possible that the scale of the structure and/or some of the features of the preferred design will have to be pared back. The goal of \$150,000 provides playground structures of suitable size, accessibility, and quality for the two spaces we will have to fill.

### 7. How can I get involved?

We definitely need more help! If you are interested in the design or can help with fundraising, please email us or join us at our next meeting, which will take place right after our PAC meeting on Tuesday, November 20, 2018. Our PAC meetings typically run from 6:30-8:00, though in October we were able to end the general meeting early and start the playground meeting at 7:30pm. We hope to see you there!

Laura Creech, Peace Arch Elementary PAC President ([peacearchPACnews@gmail.com](mailto:peacearchPACnews@gmail.com))  
Sean Halliburton, Peace Arch Playground Committee ([peacearchPACplayground@gmail.com](mailto:peacearchPACplayground@gmail.com))