

Introduction to Foundry Surrey

· F O U N D R Y ·
SURREY

Operated by:



November 2020



Agenda

WHAT IS FOUNDRY?

WHO IS PACIFIC COMMUNITY RESOURCES SOCIETY?

COMMUNITY OF SURREY

FOUNDRY STRUCTURE & COMMUNITY ENGAGEMENT

QUESTIONS & CONTACT



We acknowledge, with gratitude, that our place of work is on the ancestral, traditional and unceded territories of the Semiahmoo, Katzie, Kwikwetlem, Kwantlen, Qayqayt, and Tsawwassen First Nations.



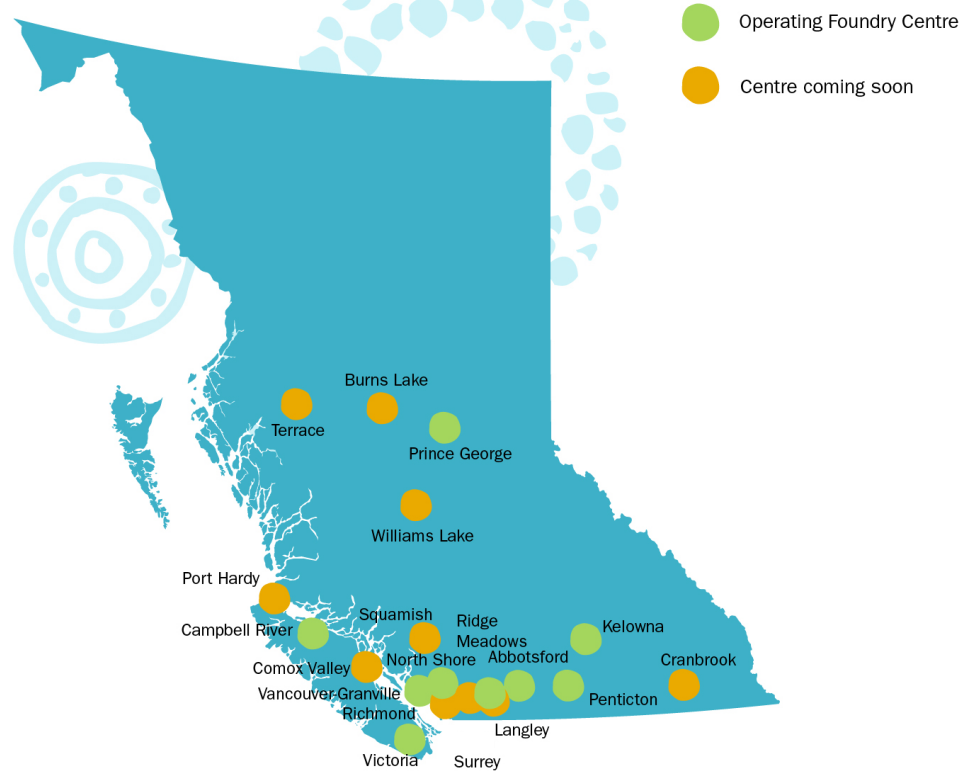
WHAT IS FOUNDRY?

**FOUNDRY'S EXPANSION WAS INCLUDED IN THE
MINISTRY OF MENTAL HEALTH AND ADDICTIONS'
"A PATHWAY TO HOPE"**



WHAT IS FOUNDRY?

FOUNDRY CENTRES ARE TAILORED TO THE NEEDS OF THE LOCAL COMMUNITY AND ARE CO-DESIGNED WITH YOUNG PEOPLE AND THEIR FAMILIES



WHAT IS FOUNDRY?



VISION

Foundry's vision is to transform access to health and social services for youth and families.

We aim to make British Columbia the **best place in the world** for young people to grow up

MISSION

To support youth in living a good life.



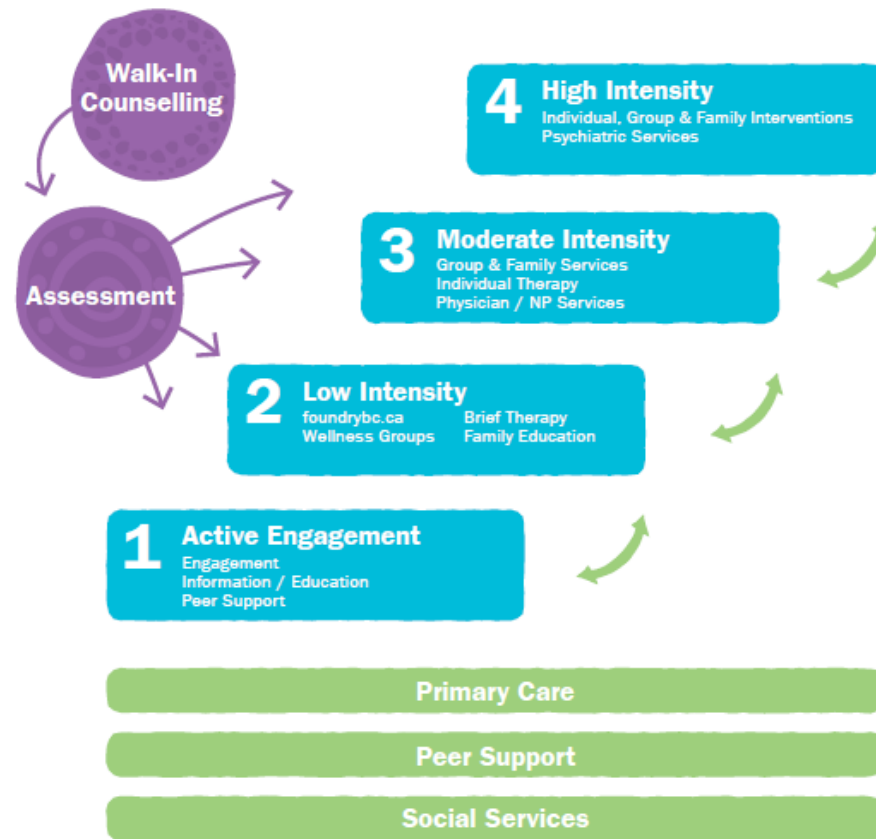
WHAT IS FOUNDRY?

FOUNDRY'S CORE SERVICES



WHAT IS FOUNDRY?

FOUNDRY'S INTEGRATED STEPPED CARE MODEL



WHAT IS FOUNDRY?

FOUNDRY CENTRES HAVE SEEN OVER 13,411 UNIQUE YOUNG PEOPLE ACCESSING SERVICES FROM MAY 2018 TO DECEMBER 2019

13,411

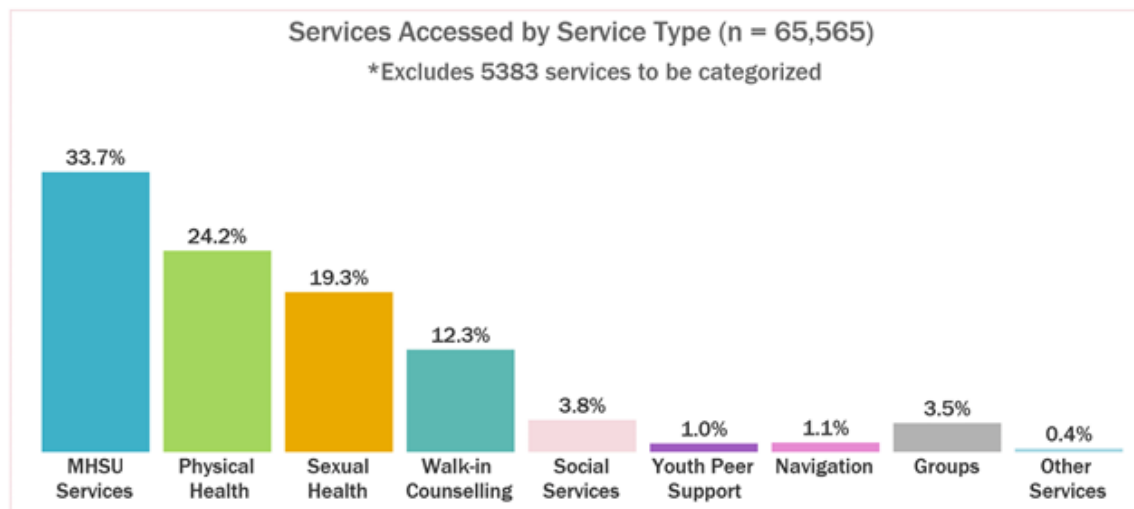
Unique Youth

51,429

Visits

70,948

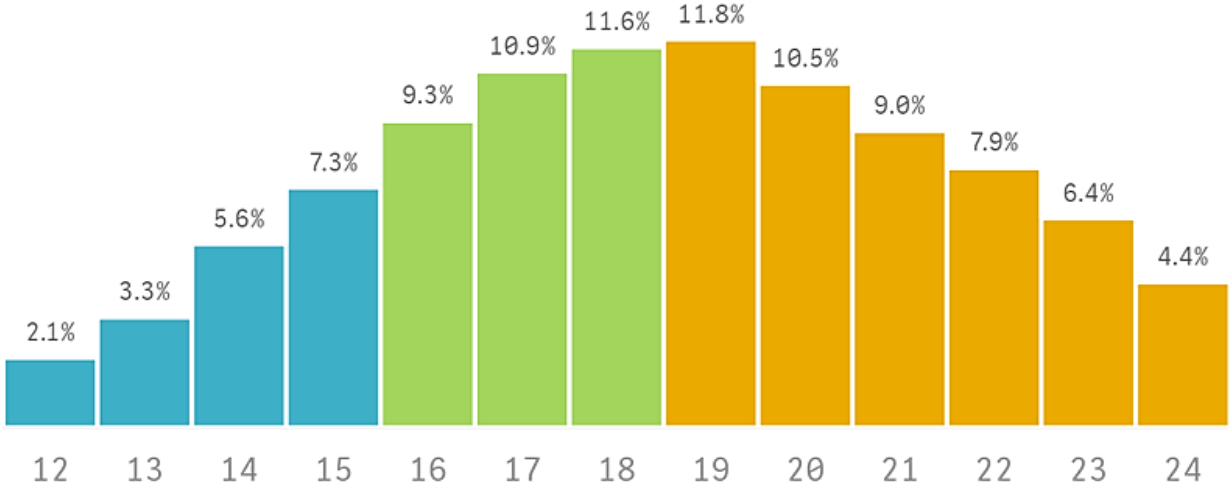
Services Accessed



WHAT IS FOUNDRY?

AGE AT REGISTRATION (JAN-DEC 2019)

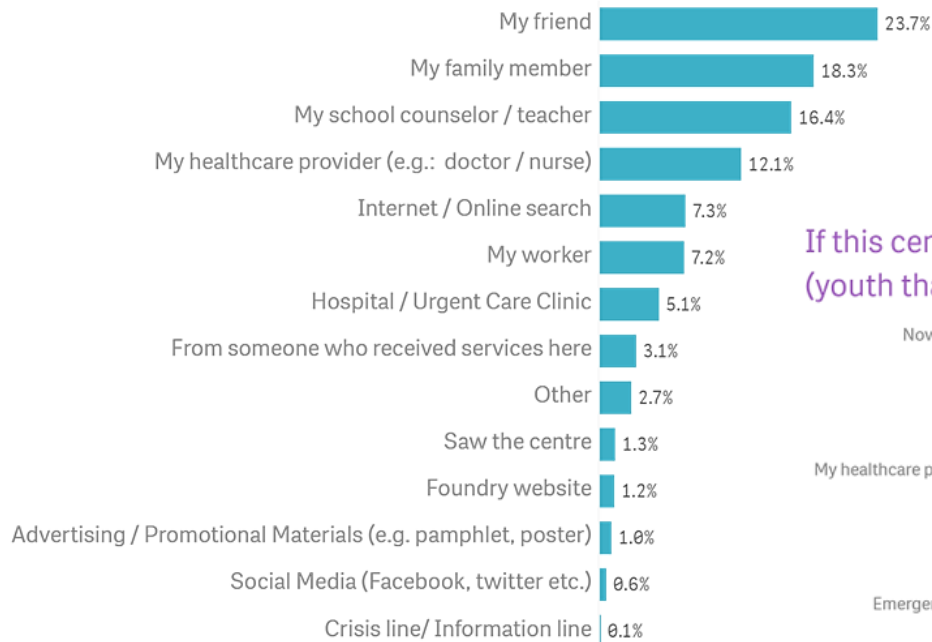
Age at Registration (n=9,589)



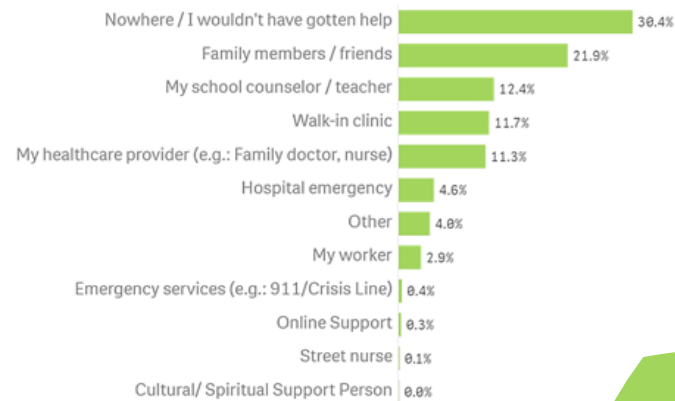
WHAT IS FOUNDRY?

REFERRAL SOURCE (JAN-DEC 2019)

Found out about this centre through (n=6,898)

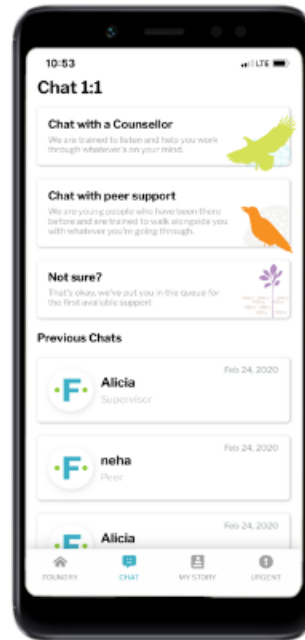


If this centre was unavailable, I would have gone to (n=4,275)
(youth that requested MHSU services)



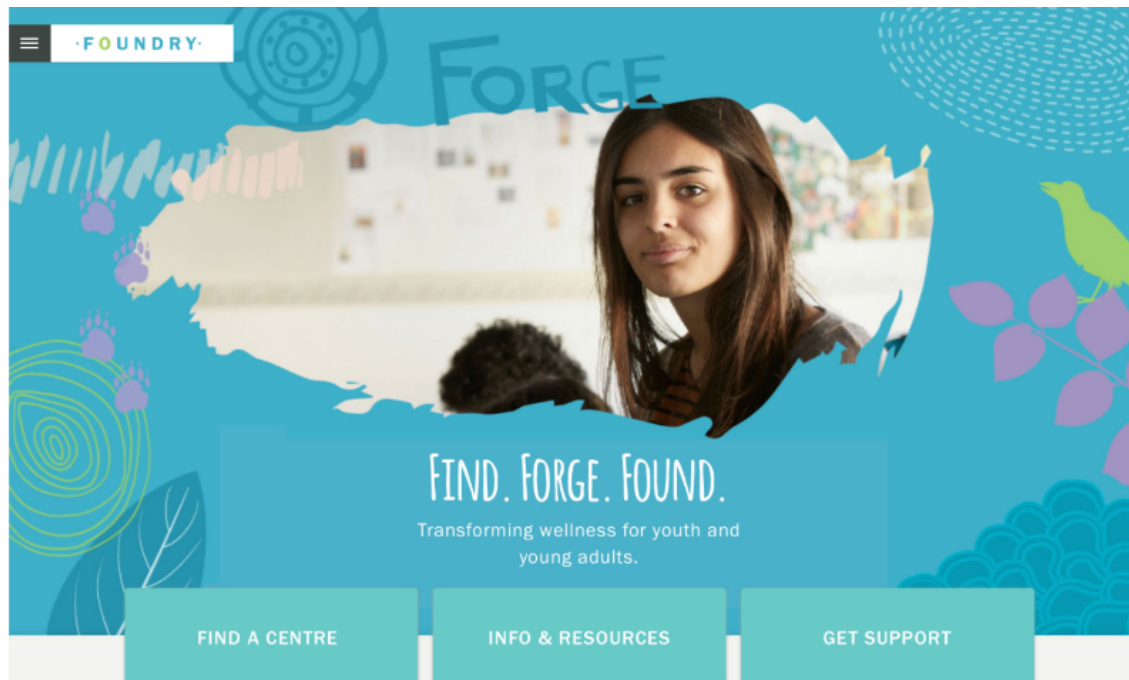
WHAT IS FOUNDRY?

FOUNDRY OFFERS YOUNG PEOPLE AGES 12-24 HEALTH AND WELLNESS RESOURCES, SERVICES AND SUPPORTS – THROUGH INTEGRATED YOUTH SERVICE CENTRES, FOUNDRY VIRTUAL AND FOUNDRYBC.CA



WHAT IS FOUNDRY?

**IN PARTNERSHIP WITH BC CHILDREN'S HOSPITAL,
FOUNDRYBC.CA PROVIDES ONLINE INFORMATION
TOOLS, ARTICLES & STORIES**



WHAT IS FOUNDRY?

FOUNDRY VIRTUAL



The graphic features a central white circle on a background of teal, yellow, and pink. The Foundry logo is at the top, followed by the text 'FOUNDRY'S VIRTUAL SERVICES NOW OFFERING:'. A green box lists three services: Drop-in counselling, 1-to-1 peer support, and Drop-in groups. Below this, it states 'Available to BC's young people ages 12-24 and their caregivers' and 'No referral or assessment required. Services are free and confidential'. At the bottom, contact information is provided.

FOUNDRY
WHERE WELLNESS TAKES SHAPE

FOUNDRY'S VIRTUAL SERVICES

NOW OFFERING:

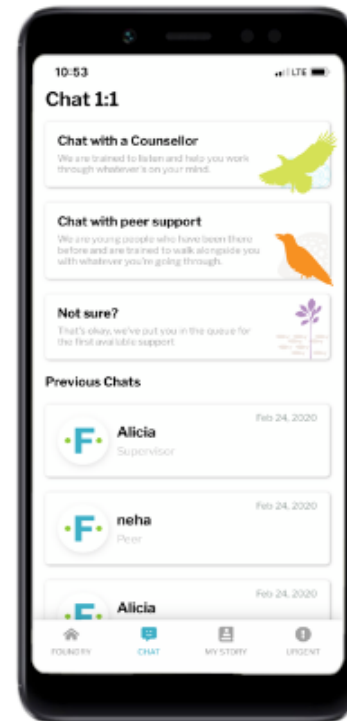
- Drop-in counselling
- 1-to-1 peer support
- Drop-in groups

Available to BC's young people ages 12-24 and their caregivers

No referral or assessment required
Services are free and confidential

To learn more about services available:

- Visit foundrybc.ca/virtual
- Call 1-833-FØUNDRY (yes, that's FØUNDRY with a zero! or 1-833-308-6379)
- Email at online@foundrybc.ca



WHAT IS FOUNDRY?

FOUNDRY'S VIRTUAL SERVICES

Services Available

To book an appointment with our counsellors or learn more about our services please call us at [1-833-F0UNDRY](tel:1-833-F0UNDRY) (that's F0UNDRY with a zero or 1-833-308-6379). You can send us an email at online@foundrybc.ca or register online to book an appointment ([Register as a young person](#), or [register as a caregiver](#)).

Drop-In Counselling for Young People & Their Caregivers

To book an appointment, call 1-833-F0UNDRY (that's F0UNDRY with a zero! or 1-833-308-6379).

[LEARN MORE](#)

Peer Support for Young People

We are now offering peer support check-ins!

[LEARN MORE](#)

Groups & Workshops for Young People

A variety of groups and workshops now available

[LEARN MORE](#)

Groups & Workshops for Caregivers

A variety of groups and workshops now available

[LEARN MORE](#)

foundrybc.ca/virtual

WHO IS PACIFIC COMMUNITY RESOURCES SOCIETY?





Foundry is Expanding!

On June 15, 2020, the Province of BC announced eight new Foundry centre locations joining the Foundry network, which will significantly improve access to health and wellness resources, services and supports for young people ages 12 to 24 and their families across British Columbia.

We will be working with the following eight communities and lead agencies to bring integrated mental health, substance use, primary care, youth and family peer supports, and social services to their communities:

- **Burns Lake:** [Carrier Sekani Family Services](#)
- **Comox Valley:** [John Howard Society of North Island](#)
- **Cranbrook:** [Ktunaxa-Kinbasket Child and Family Service Society](#)
- **Langley:** [Encompass Support Services Society](#)
- **Port Hardy:** [North Island Crisis and Counselling Centre Society](#)
- **Squamish:** [Sea to Sky Community Services Society](#)
- **Surrey:** [Pacific Community Resources Society](#)
- **Williams Lake:** [Cariboo Chilcotin Child Development Centre Association](#)

There are currently nine open Foundry centres across the province in [Campbell River](#), [Victoria](#), [Kelowna](#), the [North Shore](#) (North and West Vancouver), [Prince George](#), downtown [Vancouver](#), [Abbotsford](#), [Penticton](#) and [Maple Ridge/Pitt Meadows](#). There are also two more expected to open in 2020 in [Richmond](#) and [Terrace](#).

WHO IS PACIFIC COMMUNITY RESOURCES SOCIETY?



PACIFIC COMMUNITY RESOURCES SOCIETY

Pacific Community Resources Society (PCRS) has a 36-year history of providing a breadth of quality accredited social services across British Columbia, including: education, employment, housing, mental health, substance use, and youth and family support services.



WHO IS PACIFIC COMMUNITY RESOURCES SOCIETY?



our **MISSION**
Inspiring healthy and inclusive communities
through leadership and collaboration.



Pacific Community
Resources Society



our **VISION**
Everyone thriving in strong,
healthy communities.



Pacific Community
Resources Society

WHO IS PACIFIC COMMUNITY RESOURCES SOCIETY?



our **VALUES**

-  **Advocacy:** We advocate and collaborate with community partners for systemic change to advance social justice.
-  **Diversity & Inclusion:** We aspire to create an environment that fosters a sense of belonging, dignity, and respect.
-  **Empowerment:** We empower the people we serve, the communities we serve, and each other.
-  **Service Excellence:** We provide high-quality, people-centred services through creativity, collaboration, and growth.
-  **Stewardship:** We ensure financial and environmental sustainability through sound policy and innovative practices.
-  **Well-being:** We support the health, growth, and well-being of the people we serve, each other, and our families.



Pacific Community Resources Society

PCRS's values guide our work and help us, with our partners, to identify gaps in service, advocate and find innovative solutions to address complex social problems.

WHO IS PACIFIC COMMUNITY RESOURCES SOCIETY?



Impact of our work

Substance Use & Mental Health

We provide substance use and mental health services that meet participants where they're at recognizing that participants have different relationships with substance use. With compassion and professionalism, we approach participants to help them see who they truly are outside of their addiction.

100% participants learned skills to support their health, well-being and independence.



Education

We provide youth with the opportunity to learn, improve, and explore their strengths and interests. We are committed to supporting young people acquire skills, confidence, and competence to be successful in their educational and employment pursuits.

94% were supported to engage with school/education programming.



Employment

We provide employment services to job seekers and employers in various communities to help participants prepare for employment, secure and maintain jobs that support families, and gain meaningful work experience. Employment is a key component to quality of life.

93% were supported to find and maintain employment.



Youth and Family Support

We provide a high-level of support to families, youth, and adults in the communities we serve. We encourage life skills, personal growth, and a sense of belonging and connection. We operate youth centres, one-on-one and group supports that engage youth through education, outreach, and professional supports.

97% were supported to address safety needs for themselves and their families.

Housing

We provide housing services that support vulnerable people who are homeless or at risk of homelessness to maintain stable, long-term housing. We serve through street outreach, housing search, and housing-first services. We are committed to and passionate about ending homelessness in our communities.

79% were supported to find and maintain housing.

WHO IS PACIFIC COMMUNITY RESOURCES SOCIETY?



COMMUNITY OF SURREY



THE CITY OF SURREY



- largest city by land area and second most populated in Metro Vancouver
- one of the fastest growing, culturally diverse cities in Canada
- experienced a 10.6% increase in overall population from 2011-2016

COMMUNITY OF SURREY

2016 Census

The Semiahmoo, Katzie and Kwantlen First Nations People have lived in the region for thousands of years.

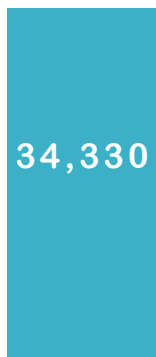
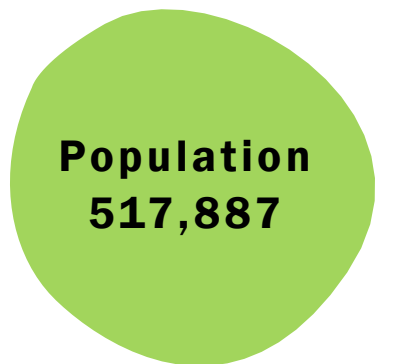
Settlements along the mouth of the Fraser River, at Crescent Beach, at the mouth of the Campbell River and in the north along the sheltered bends of the Fraser River had well established villages and temporary or seasonal settlements.

Source: City of Surrey 2020



Source: City of Surrey 2020

WHO LIVES IN SURREY? (2016 Census)



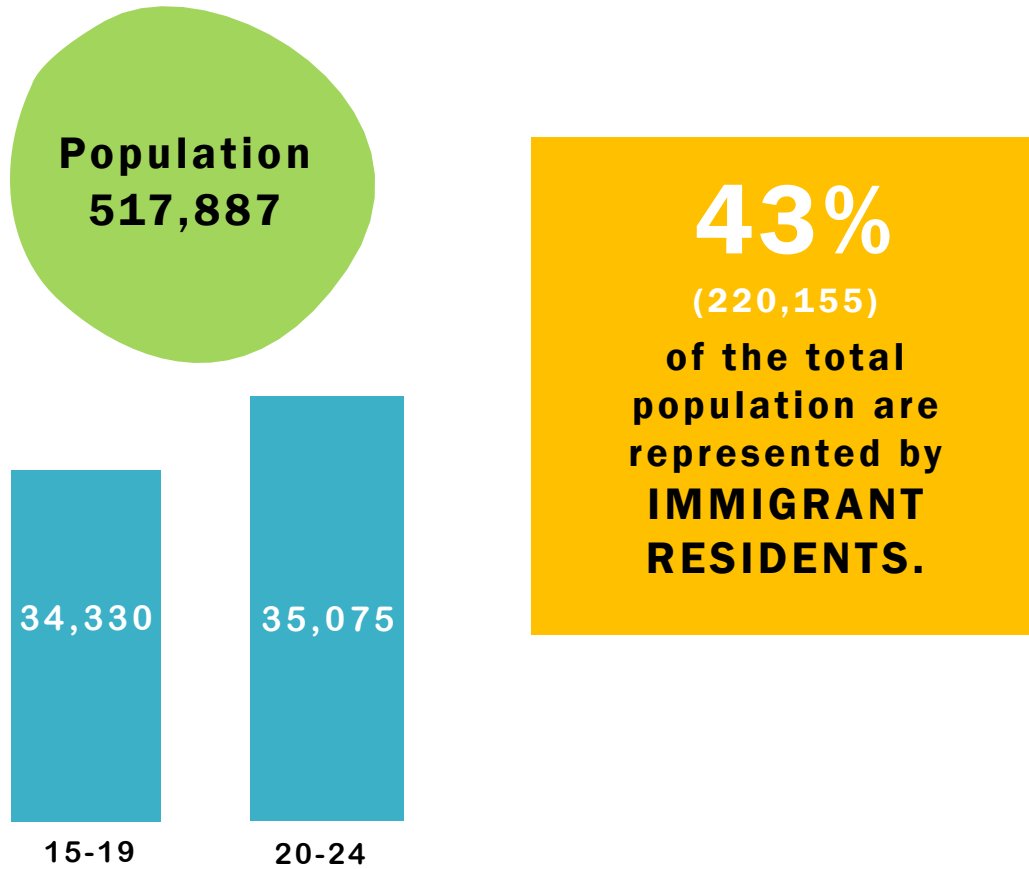
15-19



20-24

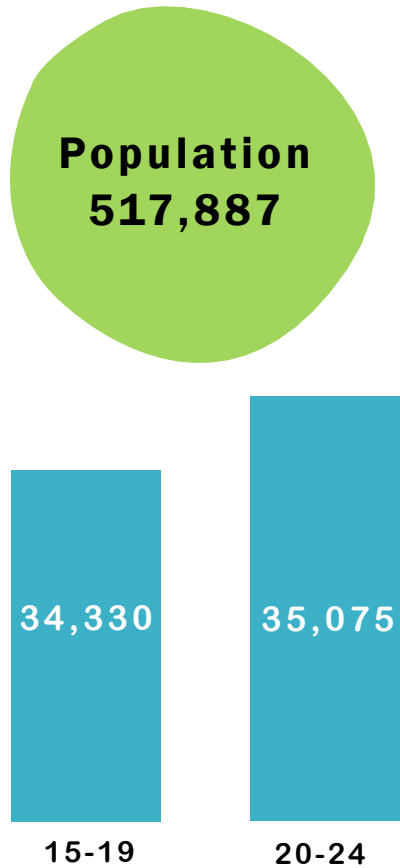
COMMUNITY OF SURREY

WHO LIVES IN SURREY? (2016 Census)



COMMUNITY OF SURREY

WHO LIVES IN SURREY? (2016 Census)



COMMUNITY OF SURREY

43%
(220,155)
of the total
population are
represented by
**IMMIGRANT
RESIDENTS.**

13,460
self-identified as
Aboriginals.
(increased
approximately
22.9% since the
2011 Census)

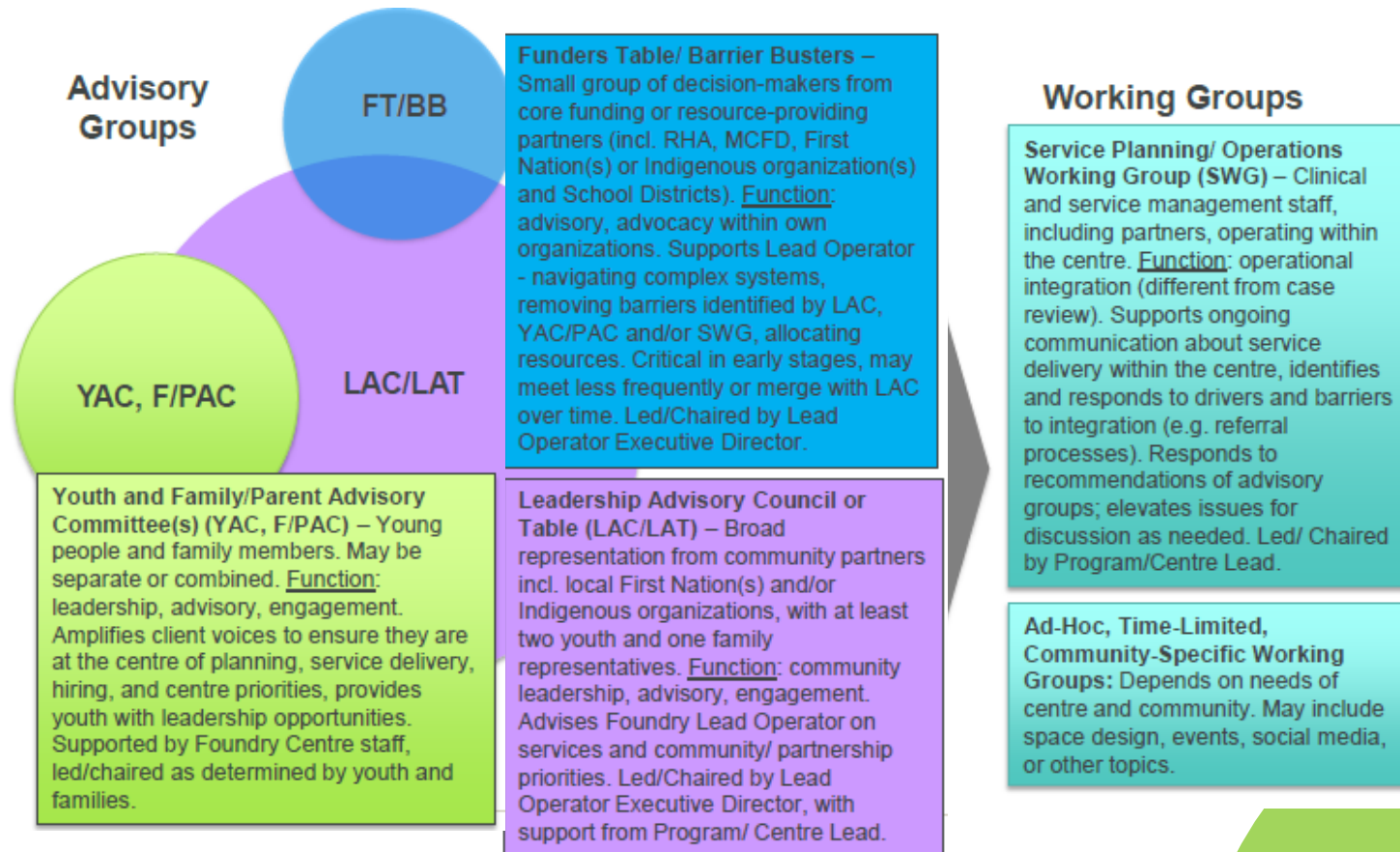
**The Whalley and Newton
communities have the largest
Aboriginal populations in Surrey.**
(2016 Profile of the Indigenous Population in Surrey)

Note: "Aboriginal" identity includes "persons who are First Nations (North American Indian), Métis or Inuk (Inuit) and/or those who are Registered or Treaty Indians" by Statistics Canada, 2016.



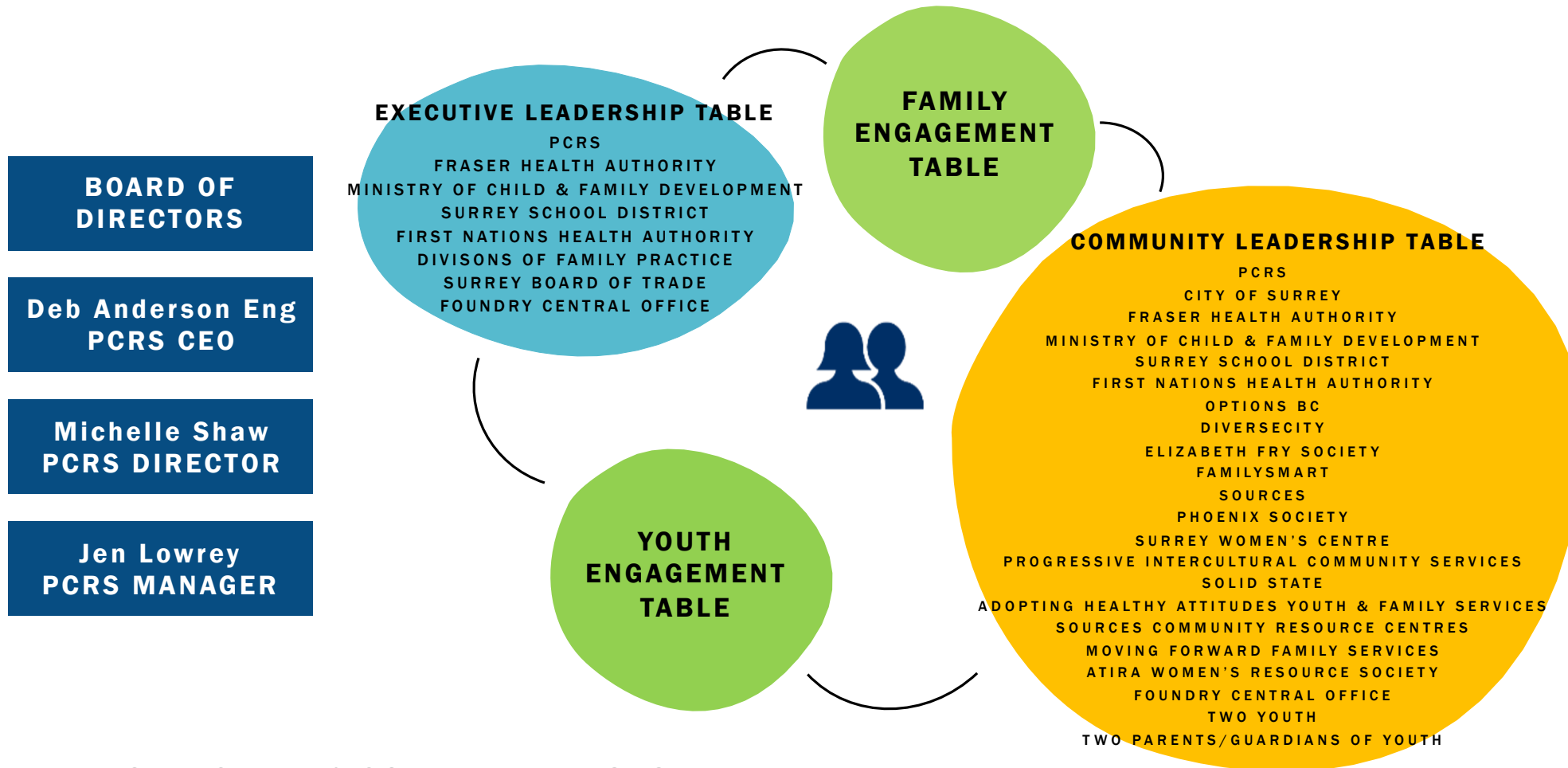
**FOUNDRY STRUCTURE &
COMMUNITY ENGAGEMENT**

FOUNDRY GOVERNANCE TO SUPPORT DISTRIBUTED LEADERSHIP WITHIN A COMPLEX SYSTEM



FOUNDRY STRUCTURE & COMMUNITY ENGAGEMENT

FOUNDRY SURREY ORGANIZATIONAL CHART



FOUNDRY STRUCTURE & COMMUNITY ENGAGEMENT

WHAT DOES FOUNDRY SURREY NEED?

RESOURCES

- COMMUNITY SUPPORT
- COMMUNITY ENGAGEMENT
- YOUTH & FAMILY ENGAGEMENT
- PROPERTY



\$1M

FUNDRAISING

- CAPITAL



FOUNDRY STRUCTURE & COMMUNITY ENGAGEMENT



HOW TO GET INVOLVED

WORKING GROUPS

- CLINICAL
- OPERATIONS
- MEDICAL
- FUND DEVELOPMENT



**COMMUNITY
PRESENTATIONS**

HOW TO GET INVOLVED

WORKING GROUPS

- CLINICAL
- OPERATIONS
- MEDICAL
- FUND DEVELOPMENT

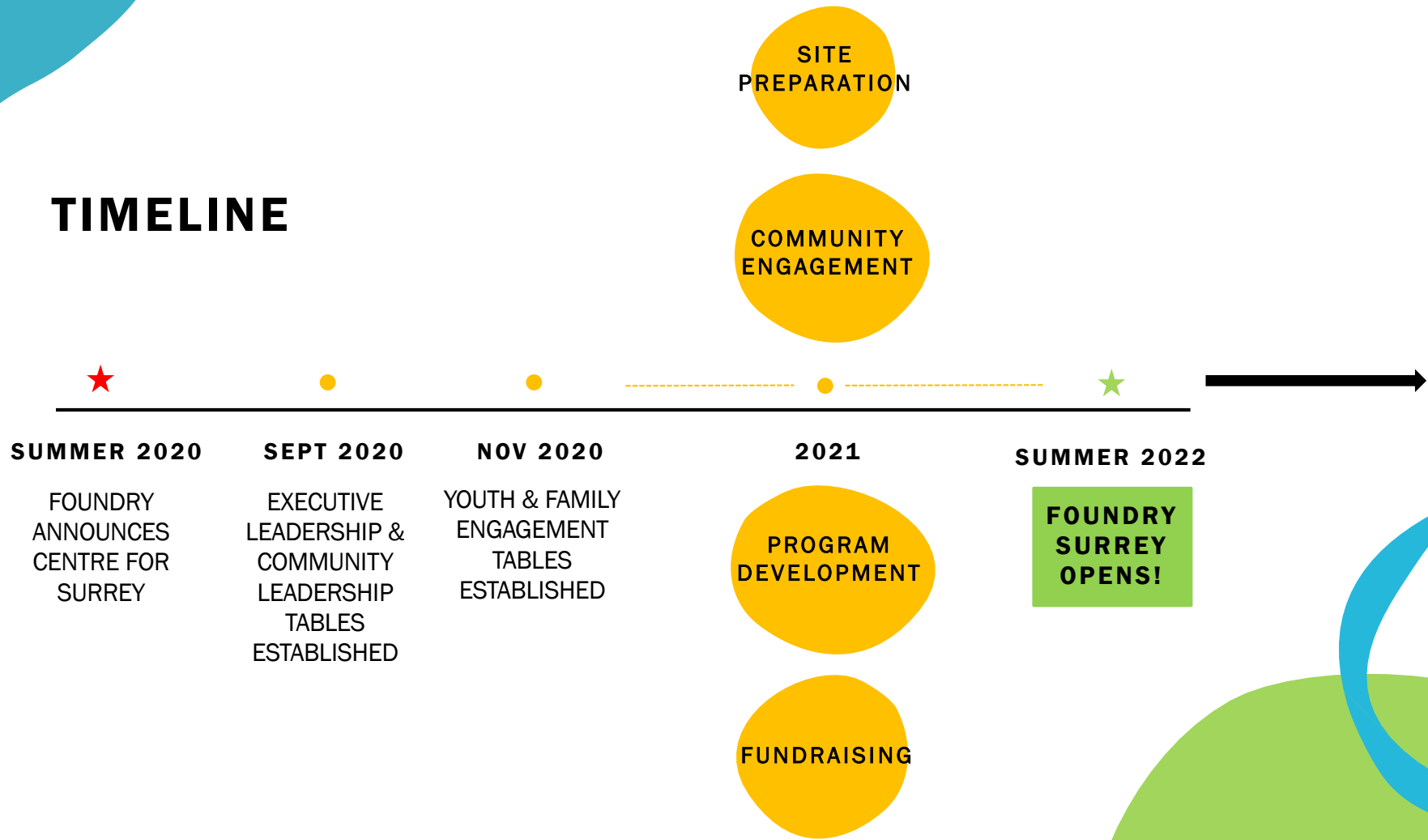
COMMUNITY
PRESENTATIONS

Did you hear that a Foundry is opening in Surrey?



CHEERLEAD!

TIMELINE



FOUNDRY STRUCTURE & COMMUNITY ENGAGEMENT

QUESTIONS?

CONTACT:

Jen Lowrey
Manager, Foundry Development
JLowrey@PCRS.CA
604-813-1250

WWW.FOUNDRYBC.CA

· F O U N D R Y ·
SURREY

Operated by:



PCRS
Thriving, healthy communities