

Welcome to Fraser Heights Secondary. Please make note of the following points of interest.

FIRST FLOOR

1. Theatre. This is accessed from our garage area (the area in the center of the school outside the cafeteria)
2. Main Gym and Small Gym. Down the hallway from the garage area. We also have a WEIGHT ROOM that is located up the stairs from the small gym
3. LIBRARY. This is located on the left side as soon as you enter the school. The Careers Department where you can find out more about post secondary education and programs outside the district (and inside the district) for all students
4. Woodwork / Shop area. Located across from the theatre on the first floor.
5. Office/Counsellor/Administration. This is located on the RIGHT side as soon as you enter the building.
6. NLC or Neighbour Learning Commons. This area is located to the far right when you enter the school. It was added to the school after it was built. As the name suggests it is used by the school community and outside groups (booked through facilities)

SECOND FLOOR

1. Science wing. We have a super lab to the left side of the school on the second floor. It's for use for all our Science classrooms and stretches behind the classrooms in which Science is taught
2. Room 209/210. This is an area where students go for support for LST and Language (ELL). It's located right on top of the stairs when you go to the second floor
3. A large part of the second floor is open to below and you can exit the building on the far right from the second floor

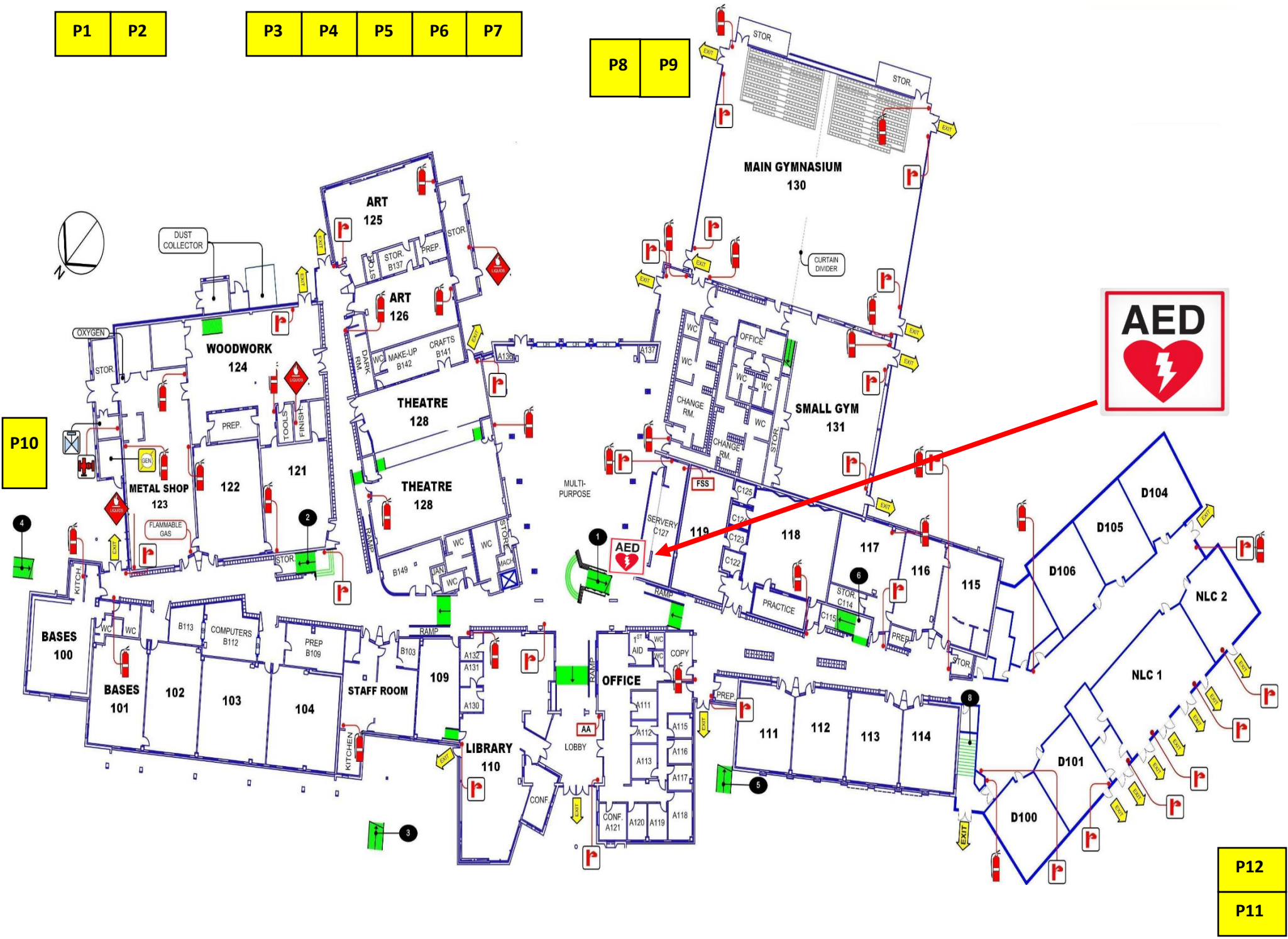
PORTABLES

P1 P2

P3 P4 P5 P6 P7

P8 P9

P10



P12
P11

