

Grandview Heights Secondary Parent Transition Committee Meeting October 29, 2020



"Engaged learners inspiring the future"

AGENDA

shutterstock.com • 1209294013

1. Welcome and Introductions
2. Our Purpose, Task, Meeting Dates & Times
3. Communications – staying informed
4. Grandview Catchment / timeline for 2020-2021
5. Construction update and renderings
6. Comments and Questions

Welcome and Introductions

A little bit about me...



Me- love the outdoors,
hiking, kayaking,
cooking, fishing, golfing
- live in the area



Principal 6 yrs at North
Surrey, 15 yrs admin,
passionate about GH



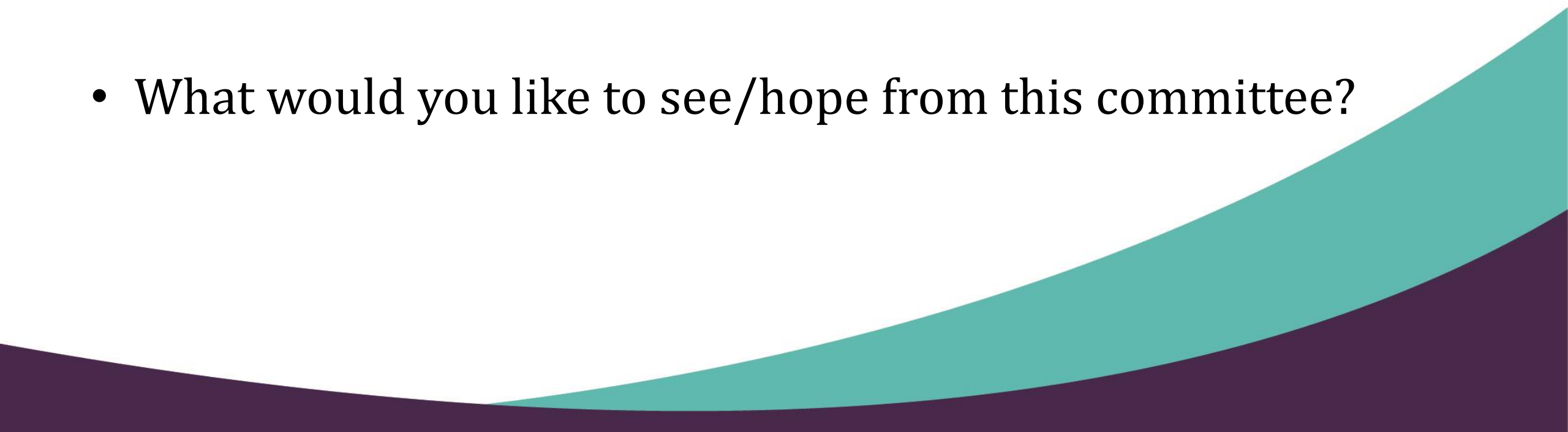
Meet the family...

My team mate!

Karen Ponuick (Head Secretary)



A little bit about you... Please unmute to speak

- Your name
 - Child(s) name and current school
 - What would you like to see/hope from this committee?
- 



of our team... my thoughts

- To have fun, to be curious and collaborative while working together to support all of our kids coming to GH.
- Providing advice to myself and the school district on the transition process.
- Act as a Liaison to your school community and PAC.
- A place to address questions and concerns.
- To solicit and collect feedback as needed.
- To build positive relationships and connections between the larger Grandview community and our new school.

Meeting Dates / Times



- November 26
- January 28
- February 25
- April 29
- May 27
- June 24



All meetings will be at 1pm via Zoom the last Thursday of the month

Communication is Key



- Website:
<https://www.surreyschools.ca/schools/grandviewheights/Pages/default.aspx>
- Sign up for newsletters
- Email us: Grandview@surreyschools.ca

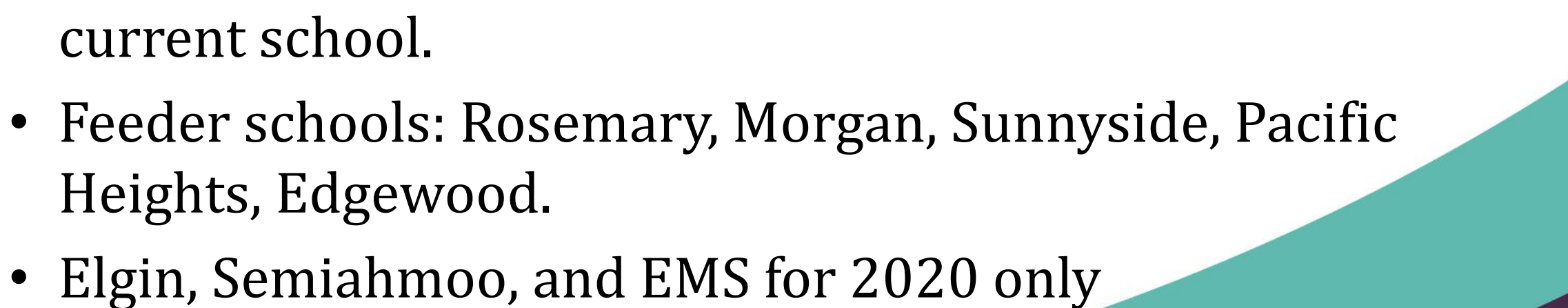
16987 25 Ave Surrey, BC V3S 9V2

Tel: 604-542-3320  www.surreyschools.ca  @Grandview36  grandview36

Location... 16987 25 Ave Surrey



Grandview Heights Catchment

- Projected Opening - September 7, 2021.
 - Grade 8-11 students - approx. 855 to start.
 - Grade 12 students to remain at current school.
 - Siblings of Gr 12 students have the choice to remain at their current school.
 - Feeder schools: Rosemary, Morgan, Sunnyside, Pacific Heights, Edgewood.
 - Elgin, Semiahmoo, and EMS for 2020 only
- 

314 Days to Opening... 2020-2021 Timeline

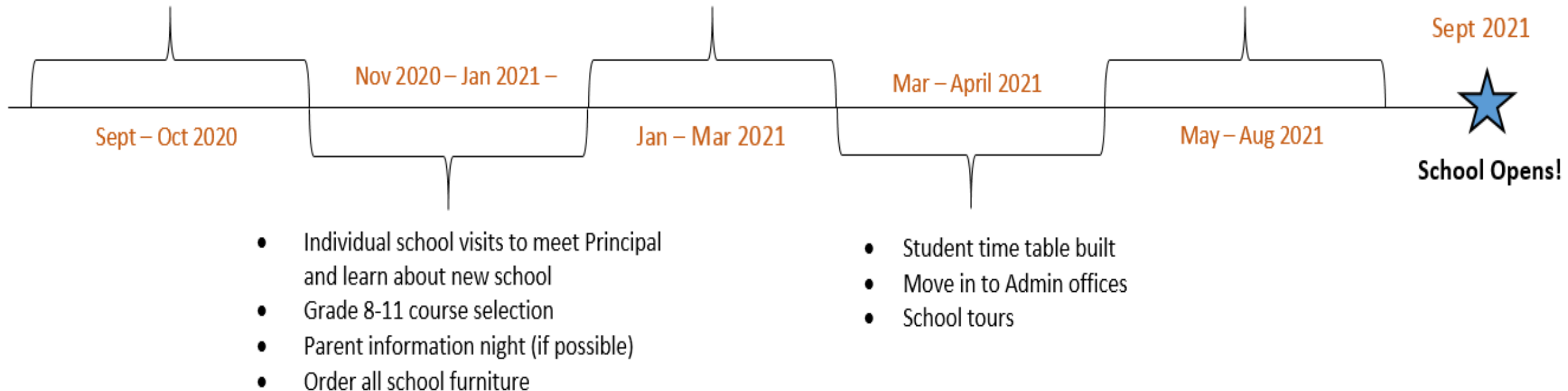


Lots to do...

- School communications sent out
- Parent Transition Committee developed and first meeting
- Meetings with students regarding mascot, school colours & logo

- Teachers hired

- Receive all furniture, resources and get ready for opening
- Student schedules and info packages sent home to families



Our Amazing School.. key learning areas

Renderings



An aerial architectural rendering of a modern sports and community center. The main building is a large, curved structure with a prominent circular glass-enclosed upper level. It is surrounded by a vast outdoor area featuring a large green field, several smaller landscaped green spaces with trees and shrubs, and a paved plaza. A curved, covered walkway or entrance structure is visible. In the background, other multi-story buildings and a parking lot with several cars are shown.

160k sq ft inside
space

50k sq ft of outside
space, full rugby-
soccer pitch,
outdoor basket ball
court, all weather
field, benches,
parking, drop off
areas



MULTI-PURPOSE ATRIUM



STUDENT COMMON



LEARNING COMMONS



LARGE GYMNASIUM



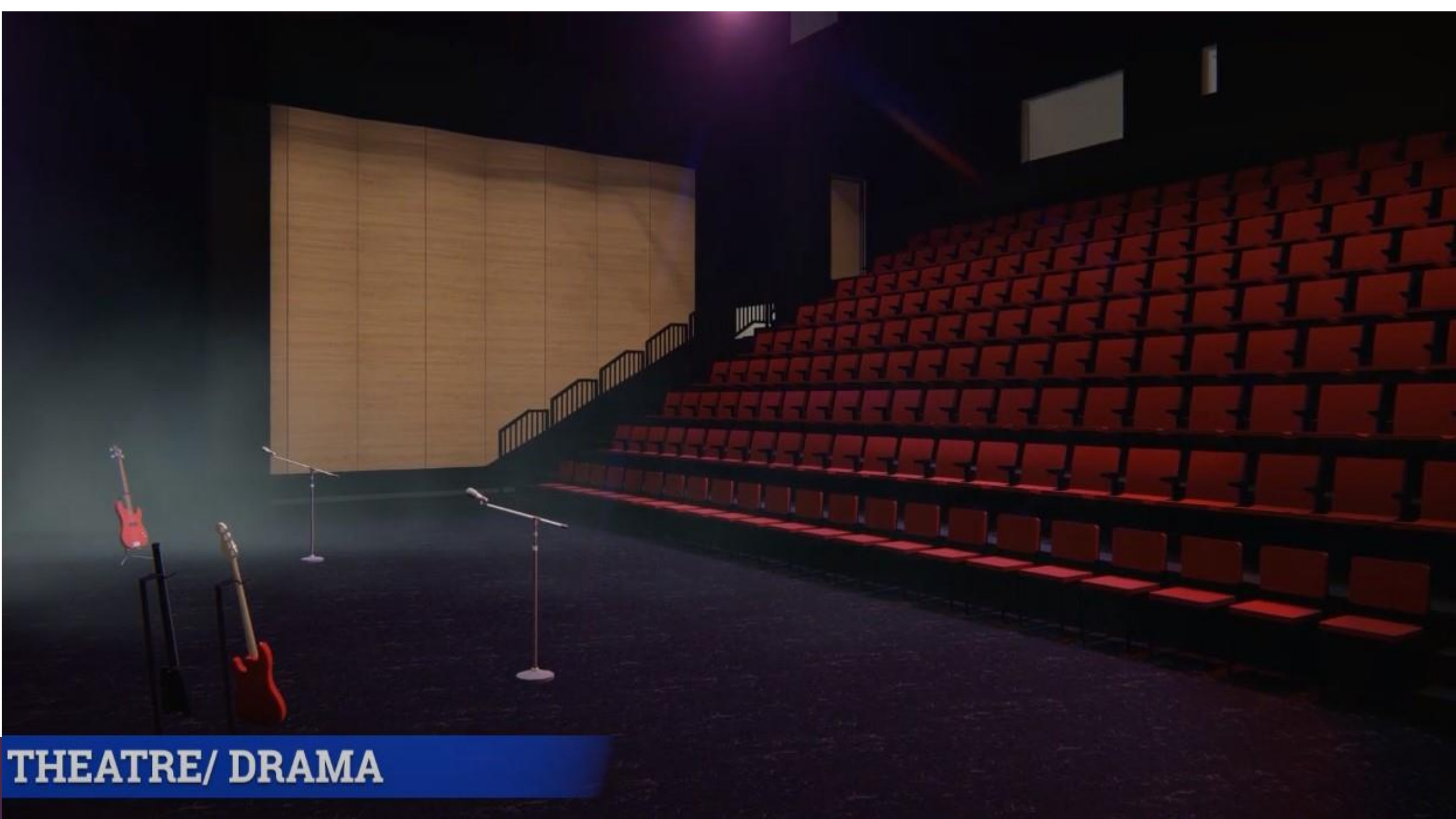
SMALL GYMNASIUM

A modern fitness room with a clean, minimalist design. The room features a row of treadmills and stationary bikes. The treadmills are arranged in a line, and the stationary bikes are positioned in front of them. The room has large windows on the right side, providing natural light. The ceiling is white with exposed ductwork and modern lighting fixtures. The floor is a dark, speckled material. A blue banner with the text "FITNESS ROOM" is at the bottom left.

FITNESS ROOM



WEIGHT ROOM



THEATRE/ DRAMA



DANCE STUDIO

A wide-angle photograph of a modern science laboratory. The room features long, light-colored wooden lab benches arranged in parallel rows. Each bench is equipped with a stainless steel sink and a faucet. Underneath the benches, there are numerous bright yellow, adjustable-height stools. The room has a high ceiling with exposed concrete and long, linear fluorescent light fixtures. On the left wall, there are several large whiteboards. In the background, a black door is visible, and the room opens up into another area. The overall design is clean, functional, and contemporary.

SCIENCE ROOM



LEARNING STUDIO



BREAKOUT ROOMS

Virtual tour link

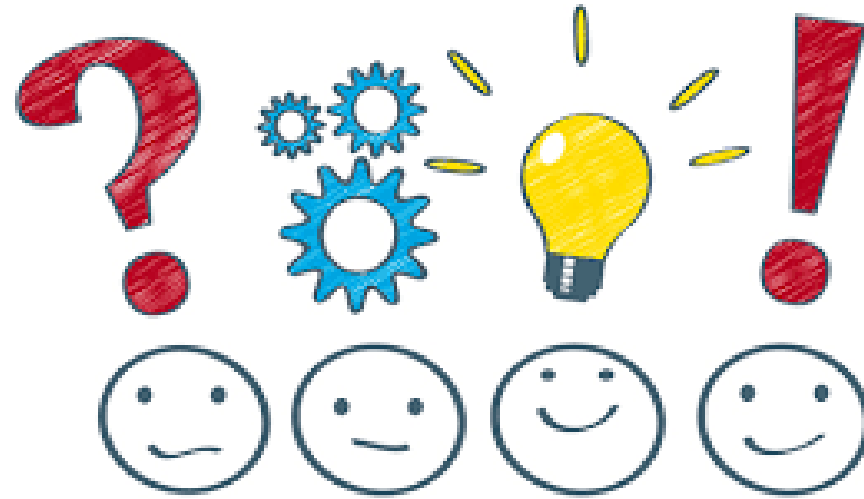
<https://www.youtube.com/watch?v=JQQIppUwN2Q&feature=youtu.be>

Common QUESTIONS

- Will GHs have an IB or French Immersion program? *IB will stay at Semi, French Immersion will stay at EMS.*
- Will there be Advanced Placement classes? *Not the first year but if there is student commitment the following year we can offer AP classes.*
- Will there be a variety of elective classes? *Yes we will offer many electives in Visual and Performing Arts, Applied Design, Skills, and Technology, Robotics, Language Arts, Sciences, Business Educ, and many more.*
- What sports teams/clubs will there be? *We plan to offer all the Fall, Winter, and Spring sports as other secondary schools in South Surrey. (depending on Provincial health guidelines).*

Your Questions / Comments

- Please unmute to speak, or use the chat feature to type your question or comment.





- Next Meeting will be Nov 26th 1pm.
- PPT will be posted on our website for you to access.
- Please share information and gather any questions with your school PAC.
- Please email me your inquiries, questions, agenda items for next meeting.

Thank you for your time and support!