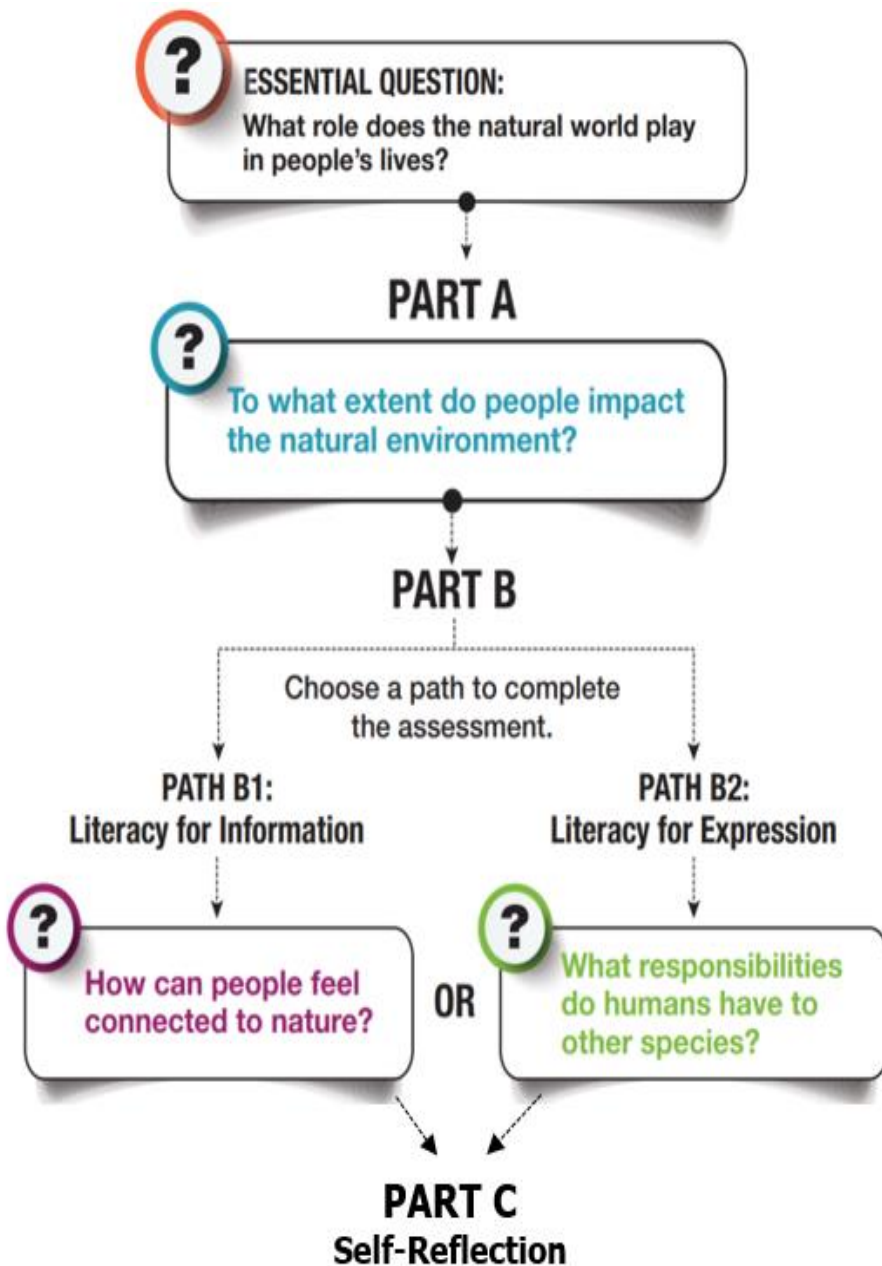


What is the Grade 10 Graduation Literacy Assessment (GLA 10)?

GLA 10 assesses students' ability to use critical thinking and analysis to make meaning from a diverse array of texts from multiple curricular areas (e.g. Language Arts, Science, Social Studies and Mathematics). GLA 10 also assesses students' ability to communicate their own ideas through written responses to the texts.

What is the format of GLA 10?

GLA 10 is delivered online and has **three parts**. Here is an example with the values of each component.



The **essential question** provides the context for the entire assessment and engages students' thinking.

In **Part A**, students analyze and demonstrate their understanding of texts by:

- Answering a series of selected-response questions (25%)
- Responding to a graphic organizer question (10%)
- Providing a written response (20%)

In **Part B**, students choose between two paths. Each path includes texts of comparable complexity and difficulty. Students show their understanding of the selected passage by:

- Answering a series of selected-response questions (25%)
- Providing a written response to communicate personal connections to the text (20%)

In **Part C**, students answer questions to reflect on their experience with the assessment. Part C is not marked.

What happens with the results?

Each student's results are placed in one of four levels of the **Grade 10 Graduation Literacy Assessment Proficiency Scale**. The results are then reported on each student's transcript with a "requirement met" indicator only.

Proficiency Scale	→			
	Emerging	Developing	Proficient	Extending
	<p>Student demonstrates an initial understanding of the concepts and competencies relevant to the expected learning. Specifically, they can do the following:</p> <ul style="list-style-type: none"> retrieve and attempt to apply information from texts respond to texts in an attempt to make meaning critically or creatively express ideas in a brief manner with little evidence use some conventions of language; errors impede meaning 	<p>Student demonstrates a partial understanding of the concepts and competencies relevant to the expected learning. Specifically, they can do the following:</p> <ul style="list-style-type: none"> comprehend and apply information from texts analyze texts in a literal or superficial way critically or creatively express ideas in a limited manner with partial evidence generally use conventions of language appropriate to audience and purpose; errors are distracting 	<p>Student demonstrates a complex understanding of the concepts and competencies relevant to the expected learning. Specifically, they can do the following:</p> <ul style="list-style-type: none"> critically analyze and synthesize information from texts interpret texts to develop logical conclusions critically or creatively express ideas in an organized and developed manner with relevant evidence consistently use conventions of language appropriate to audience and purpose; some errors may be present 	<p>Student demonstrates a sophisticated understanding of the concepts and competencies relevant to the expected learning. Specifically, they can do the following:</p> <ul style="list-style-type: none"> critically evaluate and synthesize information from texts fully interpret texts to develop insightful conclusions critically or creatively express ideas in thoroughly developed manner with convincing evidence skillfully use conventions of language appropriate to audience and purpose; need not be error free

Is GLA 10 required for graduation?

Yes. Students are also required to complete a Grade 10 Graduation Numeracy Assessment (GNA 10) and, starting in 2020/21, a Grade 12 Graduation Literacy Assessment (GLA 12) to graduate.

How was GLA 10 developed?

The design and development of GLA 10 has been guided by advice from:

- Advisory Group on Provincial Assessment (AGPA)
- Recommendations from the Literacy 12 Assessment working group
- Consultation with educators from across B.C.
- Post-secondary colleagues
- First Nations educators
- Research on best practices in teaching and learning
- Large-scale assessment

How can the GLA 10 results be used?

The Grade 10 Graduation Literacy Assessment 10 results can help many groups.

Students:

- Support them by providing information for goal setting
- Provide them with evidence of their literacy skills for use after graduation

Schools, districts, and the Ministry of Education:

- Provide system-level data on the literacy performance of our education system
- Help inform literacy-related decision making at all levels
- Provide insights into trends over time
- Give educators another source of information to help them to identify areas of strength and weakness in their classrooms

To learn more about the Grade 10 Graduation Literacy Assessment visit:

<https://curriculum.gov.bc.ca/assessment/literacy-assessment/gla-10>