

Coyote Creek

January 2026

Dear Coyote Creek Families,

As we head into the final weeks of January and move toward February, our school is buzzing with learning, special events, and opportunities for students to connect and have fun including our school-wide math festival yesterday! We hope students had memorable experiences working with their numeracy skills. In February, families can look forward to upcoming class experiences like Pink Shirt day, off-site learning adventures and active winter outings, as well as community events that bring everyone together after school. There will also be meaningful moments of transition as we celebrate Mrs. Zietsman beginning her maternity leave, and the return of Mrs. Miryans in Gr. 1/2.

[Kindergarten registration is now open](#) for any children born in 2021.

We'd also like to share a small but important safety note: our new extra-large traffic cones—recently put in place to help keep students safe during busy times—were unfortunately run over and damaged. These cones are costly, and it's unfortunate to see them damaged when their sole purpose is supporting Surrey Bylaws and protecting student safety. We appreciate everyone's care and cooperation in helping keep our school community a place where all members feel cared for and respected.

Thank you, as always, for your continued support and involvement as we move through these busy and exciting weeks.

Warm regards,
Ms. Hillen, Mrs. Bruce
& Coyote Creek staff



Coming up...

January

KINDERGARTEN REGISTRATION IS OPEN

23rd - Last day to order Pink Shirt Day swag

23rd - Mauna Hot Lunch (PAC)

26th - Div 18 and 19 Science World

30th - Div 24, 25 Skating

February

3rd - Deadline to order pizza for Grade 3 fundraiser

3rd - KG dental screening for kids who were away

4th - Grade 6 immunization presentations

6th - Grade 3 pizza served for lunch

6th - PAC Movie Night after school

10th - Div 7. Burnaby Museum



Pink Shirt Day

Wednesday, February 25, 2026



Kindness looks good on everyone. Pink Shirt Day is a reminder that small actions can make a big difference. By wearing pink, we stand together against bullying and choose kindness, inclusion, and respect. Let's create a community where everyone feels safe, seen, and supported, not just today, but every day! Wear pink. Stand up. Be kind.

This year, JayDees is proud to share that 10% of **ALL** proceeds will go to youth organizations! You can learn more about the groups we're supporting this year on our website.

Order Deadline:
Friday,
January 23rd



ONLINE ORDERING AVAILABLE! www.jaydeesclothing.com/PSD

Design A: *team kindness* ♥

Design B:



T-Shirts
\$12



Crewnecks \$36
(adult sizes only)



Pullover Hoodie
\$36



Dad Hats \$25
(one size only)



All prices include tax, labelling and delivery to the school. Please add \$3 for 2XL and up.



Pink Shirt Day

Wednesday, February 25, 2026



Size Charts

T-Shirt - ATC1000

	Youth					Adult						
Size	XS	S	M	L	XL	S	M	L	XL	2XL	3XL	4XL
Chest - Half Measure	14"	16"	17"	18"	19"	18 1/4"	20 1/4"	22"	24"	26"	27 3/4"	29 3/4"
Chest - Full Measure	28"	32"	34"	36"	38"	36 1/2"	40 1/2"	44"	48"	52"	55 1/2"	59 1/2"
Body Length from HPS	19"	21"	23"	25"	27"	26 5/8"	28"	29 3/8"	30 3/4"	31 5/8"	32 1/2"	33 1/2"
Sleeves Length - CB	11 3/4"	13 3/4"	14 3/4"	15 3/4"	16 3/4"	16 1/4"	17 3/4"	19"	20 1/2"	21 3/4"	23 1/4"	24 5/8"

Crewneck Sweatshirt - KOI2440

	Ladies							Unisex							
Size	XS	S	M	L	XL	2XL	3XL	XS	S	M	L	XL	2XL	3XL	4XL
Chest - Half Measure	21 1/2"	23 1/2"	25 1/2"	27 1/2"	29 1/2"	31 1/2"	33 1/2"	18"	20"	22"	24"	26"	28"	30"	32"
Chest - Full Measure	43"	47"	51"	55"	59"	63"	67"	36"	40"	44"	48"	52"	56"	60"	64"
Body Length from HPS	22 1/4"	23 1/4"	24 1/4"	25 1/4"	26 1/4"	27 1/4"	28 1/4"	27 1/2"	28 1/2"	29 1/2"	30 1/2"	31 1/2"	32 1/2"	33 1/2"	34 1/2"
Sleeve Length - CB	33 3/4"	34 1/2"	35 1/4"	36"	36 3/4"	37 1/2"	38 1/4"	33 3/4"	34 1/2"	35 1/4"	36"	36 3/4"	37 1/2"	38 1/4"	39"

Pullover Hoodie - Gildan 18500

	Youth					Adult								
	XS	S	M	L	XL	S	M	L	XL	2XL	3XL	4XL	5XL	
Body Length	19 3/4	21 1/4	22 1/2	24	25 1/2	27	28	29	30	31	32	33	34	
Body Length Tolerance	+/- 1	+/- 1	+/- 1	+/- 1	+/- 1	+/-1	+/-1	+/-1	+/-1	+/-1	+/-1	+/-1	+/-1	
Chest Tolerance	+/- 1	+/- 1	+/- 1	+/- 1	+/- 1	+/-1	+/-1	+/-1	+/-1	+/-1	+/-1	+/-1	+/-1	
Chest Width (Laid Flat)	16	17	18	19	20	20	22	24	26	28	30	32	34	
Numerical Sizes	6-8	10-12	14-16	18-20	22-24									
Sleeve Length (From Center Back)	23 1/2	26 1/2	27 3/4	30 1/4	33	33 1/2	34 1/2	35 1/2	36 1/2	37 1/2	38 1/2	39 1/2	40 1/2	
Sleeve Tolerance	+/- 1	+/- 1	+/- 1	+/- 1	+/- 1	+/- 3/4	+/- 3/4	+/- 3/4	+/- 3/4	+/- 3/4	+/- 3/4	+/- 3/4	+/- 3/4	

Dad Cap - ATC C1305 (one size fits most)

Size	OSFM
Inside circumference	56.5 cm
Crown Height (seam to button)	17 cm
Bill Length (seam to bill edge)	7.5 cm
Front 2 panel Width	18.5 cm

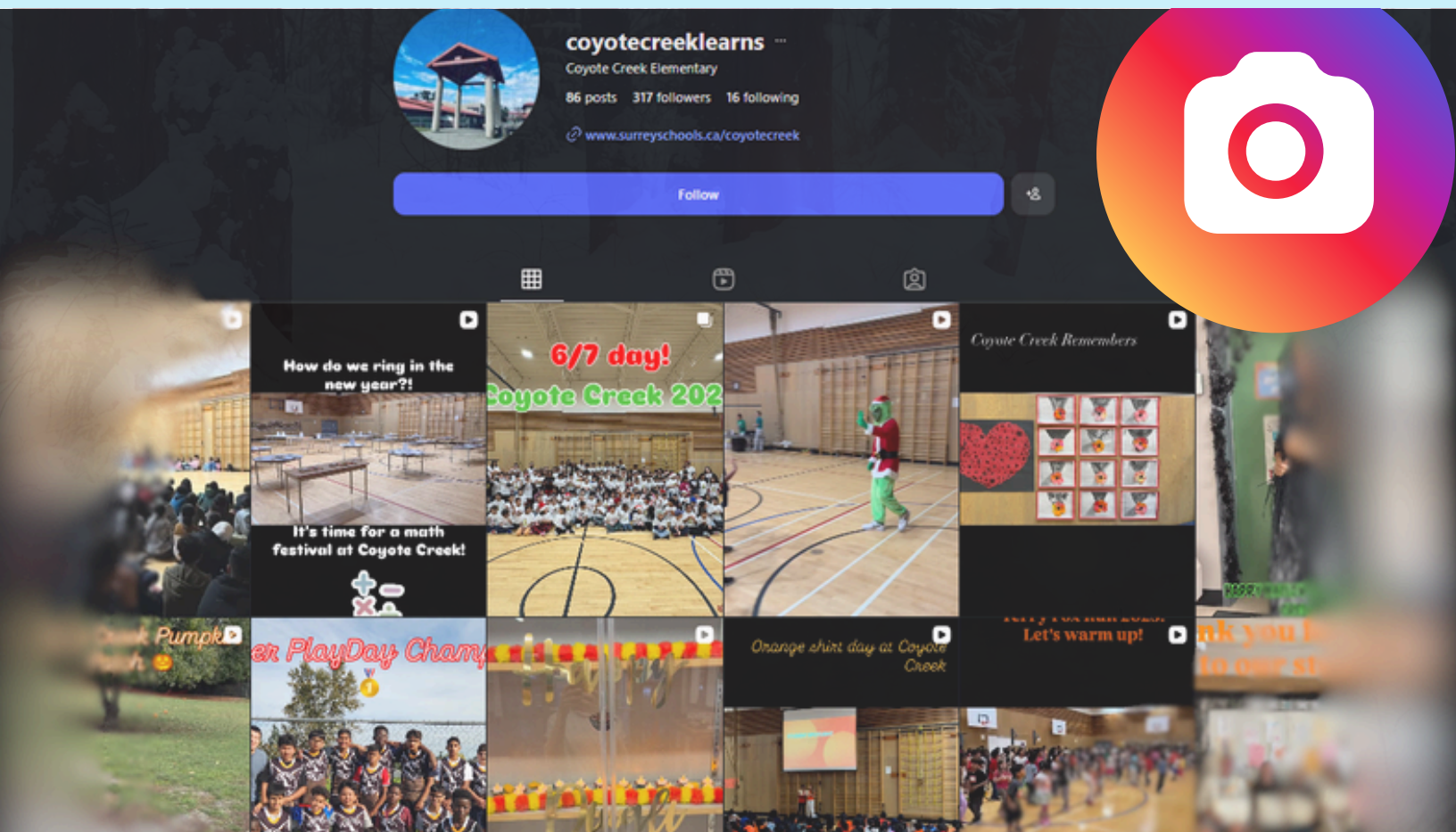


Health and Safety

Reminder: Icy Conditions

With fluctuating winter temperatures, black ice can be difficult to see and poses a serious slipping hazard on sidewalks, parking lots, and school grounds. We encourage students, families, and visitors to walk slowly, use handrails where available, and allow extra time during icy conditions. Wearing proper winter footwear with good traction (such as boots with non-slip soles) can greatly reduce the risk of falls. Thank you for helping keep our school community safe during the winter months.

Follow us on Instagram!





**NEW
UPDATE**

Lates & Attendance

Attendance Notification Update:
Starting January 5th, if your child is marked absent and we have not received prior confirmation from a parent/guardian, our primary method of contacting families for confirmation will now be via email.

Please note that this does not replace the expectation that parents/guardians notify the school when their child will be absent. We kindly ask that you continue to contact the school office before **8:45 AM** by phone at **604-597-0858** or by email at coyotecreek@surreyschools.ca.

Late students are asked to check in at the office.

Thank you for your cooperation in helping us maintain accurate attendance records.

School Etiquette

Flex-days at Fleetwood Park: Older siblings are not able to visit staff during school hours and are not authorized to pick up siblings early (unless they are 18+ and on the pickup list).

Early pick-ups: Please ensure that all early pick-ups and appointments are communicated to your child's teacher in advance. This helps the teacher anticipate a pick-up when classes might be transitioning from music, gym, or other classes. It is especially important during emergency procedures, such as fire drills or lockdown drills, when access to the building may be temporarily restricted. You can find the staff directory here: [Teacher Directory](#)

Lunch drop-offs: We have a table at the front door where you can drop off forgotten lunches. Please label the lunch with the child's name and division. Please have lunches delivered before 11:40 am, and be reminded that we do not accept food deliveries from Uber, Skip the Dishes, or any other food delivery service.

Late Pick-ups: We've noticed an increase in students not being picked up on time during early dismissals and special schedule days (and regular school days). This creates safety and supervision challenges for the staff and stress on the children. Please make sure you are familiar with the school schedule and pick-up requirements.



Weather Ready

Dress for the Weather - As the seasons change, so does the weather, and we want all our students to stay comfortable and safe! Please remember to dress your child in weather-appropriate clothing each day:

- For warmer days: Light, breathable clothing and a hat for sun protection.
- For rainy days: Raincoats and waterproof shoes.
- For colder days: Layers, warm coats, gloves, hats, and boots to keep them cozy.

Additionally, please pack a change of clothes, including a couple of pairs of socks, to ensure you're prepared for any unexpected messes or weather surprises. It's always a good idea to label clothing in case items are misplaced. Thank you for helping to be ready for all kinds of weather!

KINDERGARTEN & 2026/2027 REGISTRATION

OPENS JANUARY 12, 2026

REGISTER NOW





School Policies



The lot is reserved for staff only as we have very limited spots to accommodate all who work in our school.

Please refrain from leaving your vehicle unattended in the drop off and pick up lane.

Exercise caution when driving near the school, adhere to posted speed limits, and follow drop-off/pick-up procedures to ensure everyone's safety.

Please refrain from bringing your pets on school grounds as it is a Local bylaw and District policy.

Many people are afraid of dogs and we would like to ensure our playgrounds remain sanitary for little hands at recess and lunch.

Criminal Record Checks for Volunteers

Our district has moved to a new online Criminal Record Check (CRC) system managed by Human Resources.

Volunteers can submit the Volunteer Form here: [FORM](#)

For questions about the CRC process, please email volunteerchecks@surreyschools.ca



After-School Glee Club

Little Jammerz Glee Club is coming to your child's school for students that love to sing and perform in Grades 1- Grade 5.

Students will learn to sing & perform pop songs with cool dance moves.

We focus on pitch, breathing, and performing techniques

The program consists of six lessons; which run once per week after-school at your child's school.

Dates: Wednesdays January 28th to March 4, 2026

Location: Your child's school 8131 156 St Surrey

Time: 2:30pm-3:15pm

Cost: \$129

To Register Go Online to:

www.LittleJammerz.com or Scan the QR Code below

Register Early to get your child's spot!



For any questions please contact: info@littlejammerz.com 604-288-7006

SD36 receives a fee to facilitate the distribution of advertising materials from some community organizations and businesses. SD 36 does not accept responsibility or liability for the contents of any advertising and does not endorse an advertiser's services, goods or programs.

School Calendar

2026

February 16 th	Family Day (Statutory Holiday)
February 20 th	Non-Instructional Day
February 25 th	Pink Shirt Day
March 12 th	Parent Teacher Conferences (Early Dismissal at 1:28pm) Second Term Reports go home
March 13 th	Last day of School before Spring Break
March 16 th – March 27 th	Spring Break – School Closed
April 3 rd	Good Friday (Statutory Holiday)
April 6 th	Easter Monday (Statutory Holiday)
May 1 st	Non-Instructional Day
May 4 th	Class and Group Photos
May 18 th	Victoria Day (Statutory Holiday)
May 25 th	Non-Instructional Day
May 29 th	Early Dismissal at 1:28pm
June 25 th	Last Day of School (Early Dismissal at 1:28pm) Third Term Reports go home

Subscribe to our school calendar here
[Info on how to subscribe to our calendar](#)



Get the School App!

Never miss an update! By downloading our school app, you'll have quick access to important dates, reminders, newsletters, and announcements—all in one convenient place. The app makes it easy to stay connected with what's happening at our school and ensures you have the latest information right at your fingertips.

[Surrey Schools on the App Store](#)

