



Latimer Road Elementary Addition

School District No. 36

Board of Education Sketch Plan Presentation

KIMBR | ARCHITECTS
PLANNERS

March 12, 2025

7:00pm

Today's Agenda

- 1 Project Team**
- 2 Site Context**
- 3 Existing Conditions**
- 4 Program**
- 5 Site Plan**
- 6 Floor Plan**
- 7 3D Views**
- 8 Project Schedule**

We thank you for the opportunity to present to you today

Project Team

SD36 Project Manager *Rosemarie Cerezo*
Autumn Sweet
Trevor Wong
Shauna Ross
Brad Helland, Principal

Architects *KMBR Architects Planners Inc.*

Structural Engineers *Bush, Bohlman & Partners LLP*

Mechanical Engineers *Rocky Point Engineering Ltd.*

Electrical Engineers *Jarvis Engineering*

Civil Engineers *Coastland Engineering & Surveying Ltd*

Code Consulting *Eriksberg Engineering*

KMBR ARCHITECTS



BASSEM TAWFIK
Principal



JOANA NICOLAE
Project Manager

Site Context



Existing Conditions



Existing Conditions

Front Entrance



North Wing



East Wing

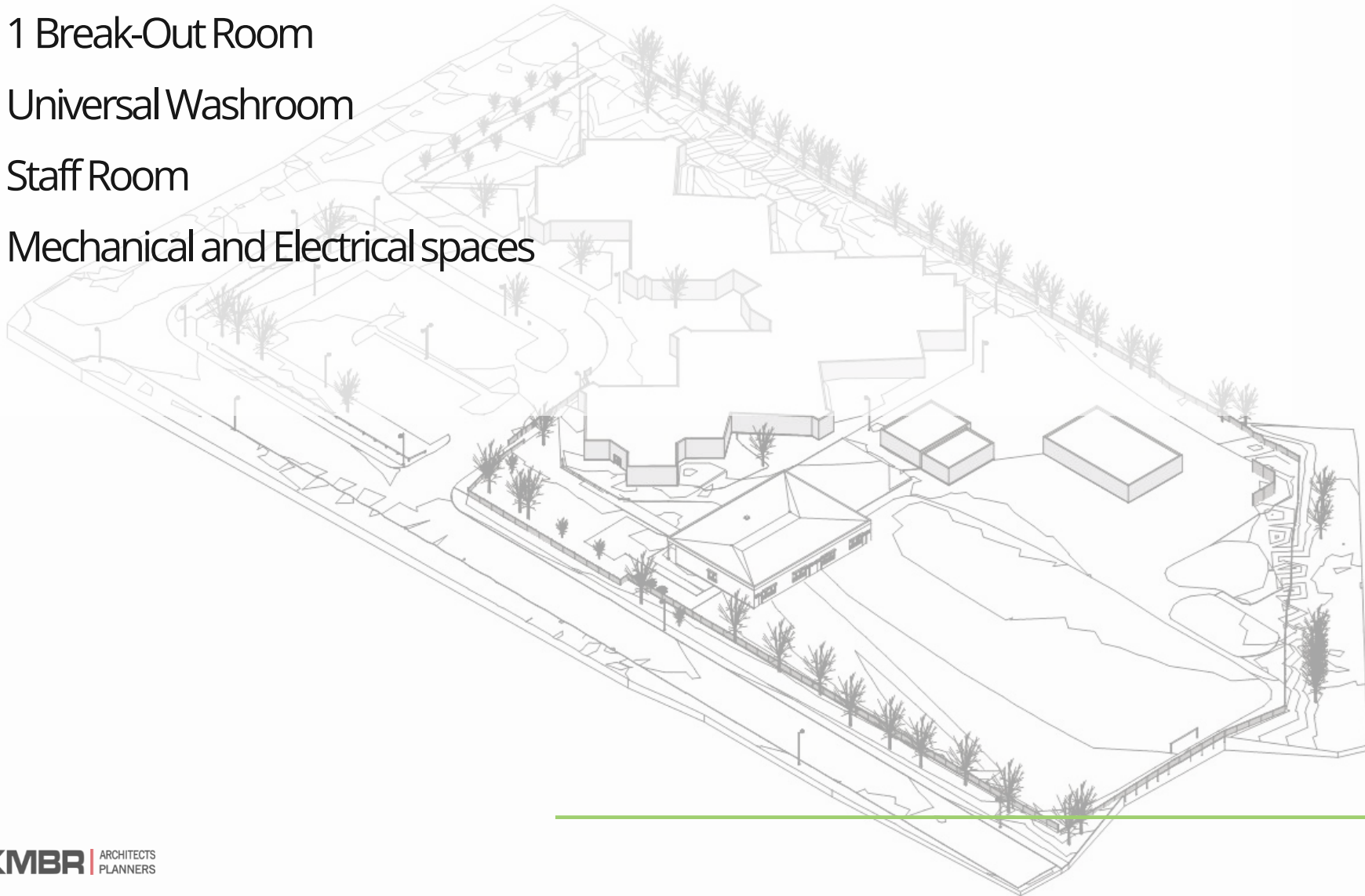


East Wing to the Field



Addition Program:

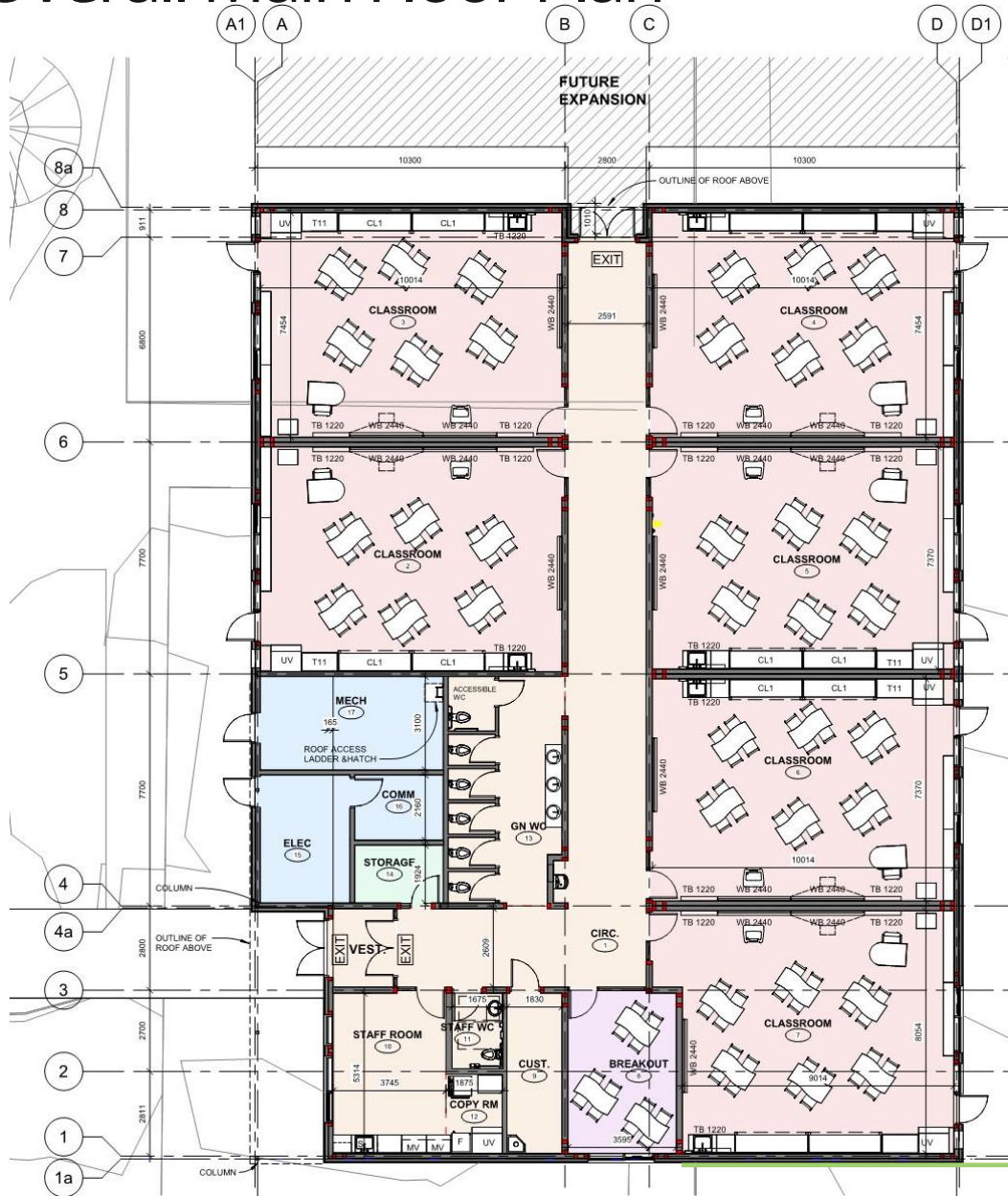
- 6 Classrooms
- 1 Break-Out Room
- Universal Washroom
- Staff Room
- Mechanical and Electrical spaces



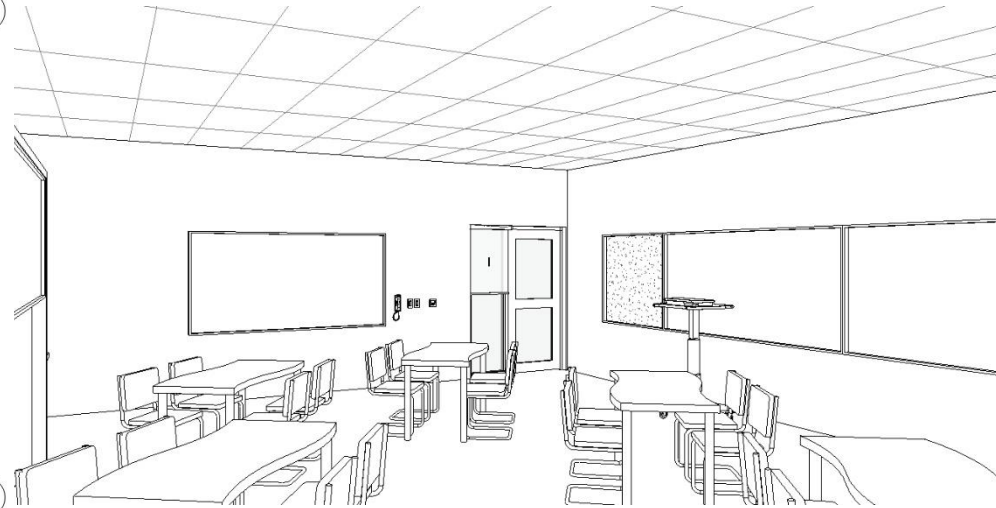
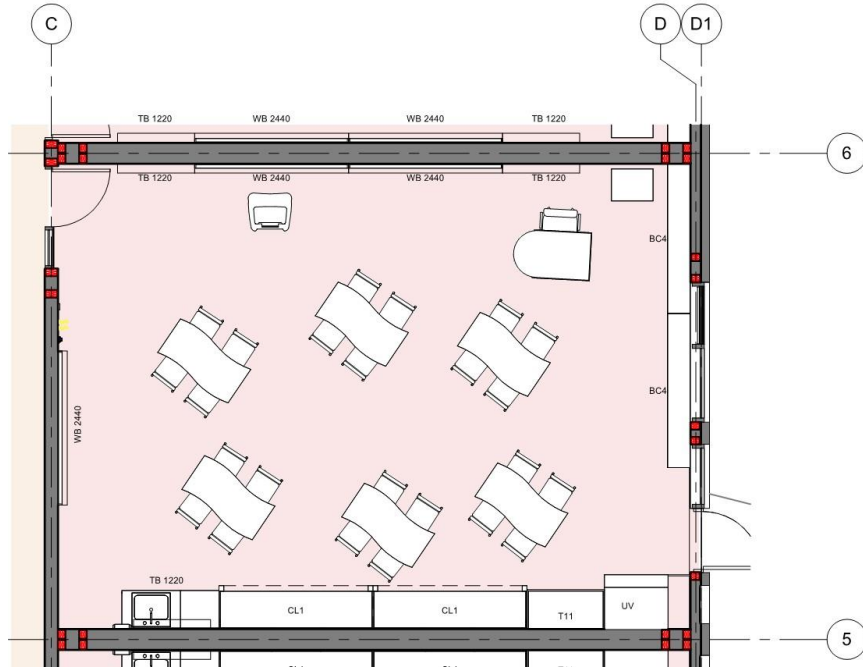
Site Plan



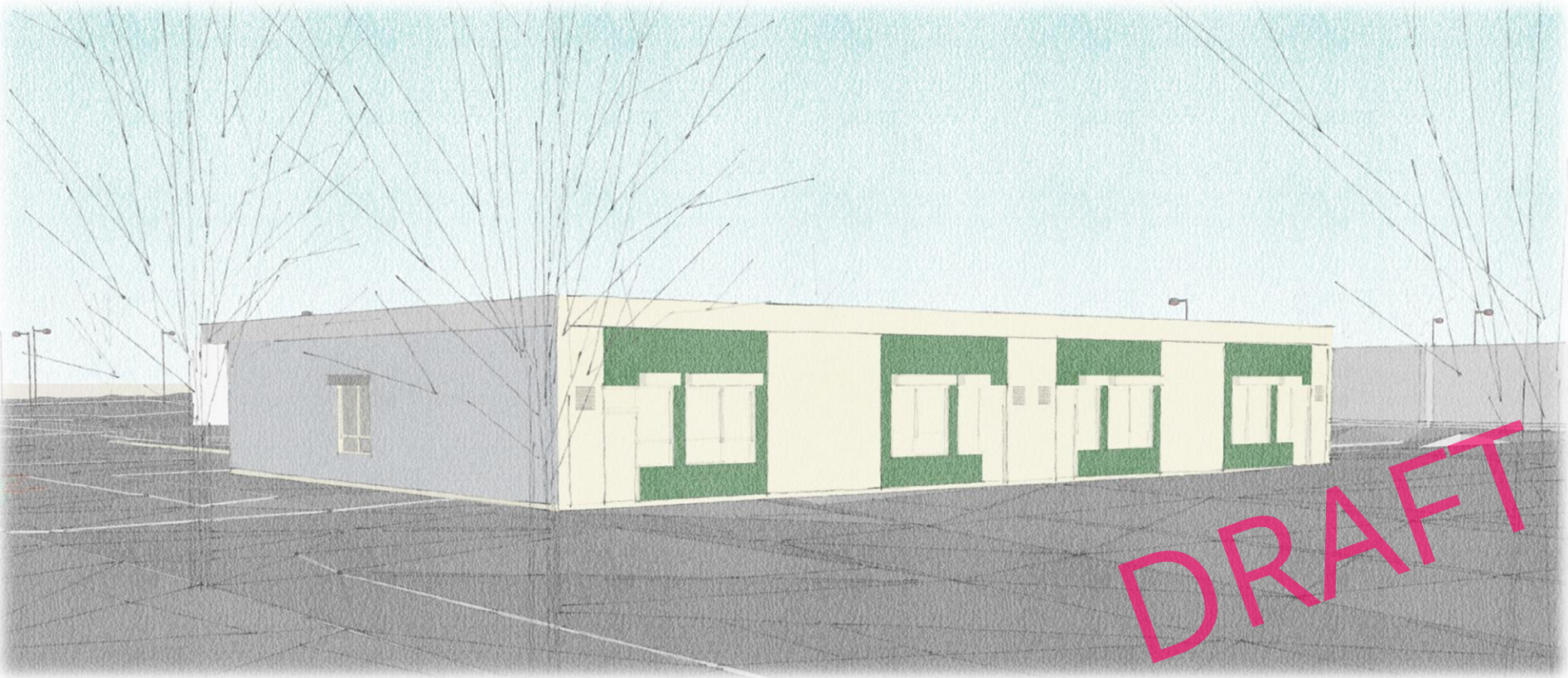
Overall Main Floor Plan



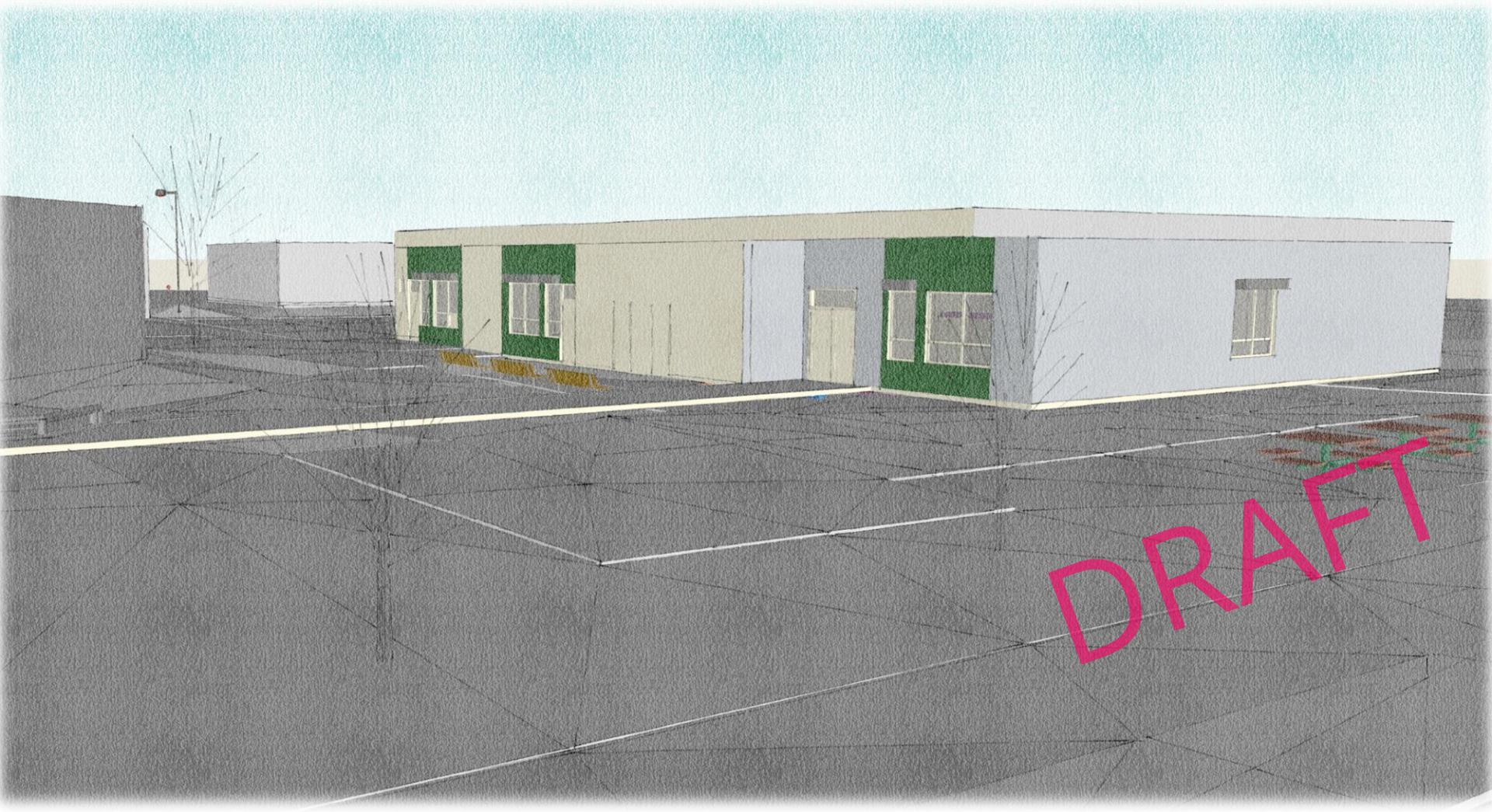
Typical Classroom Layout



South East View



South West View



Project Milestones

Latimer Elementary New Addition Schedule	2024		2025												2026			
	N	D	J	F	M	A	M	J	J	A	S	O	N	D	J	F	M	A
Schematic Design																		
Building Permit Submission																		
Building Permit Issuance																		
Construction drawings phase																		
Tender																		
Construction - early works (playground and playfield)																		
Construction - New Addition																		
Occupancy																		
Move-in-date																		
On-site works / Landscaping																		



THANK YOU





QUESTIONS?

