



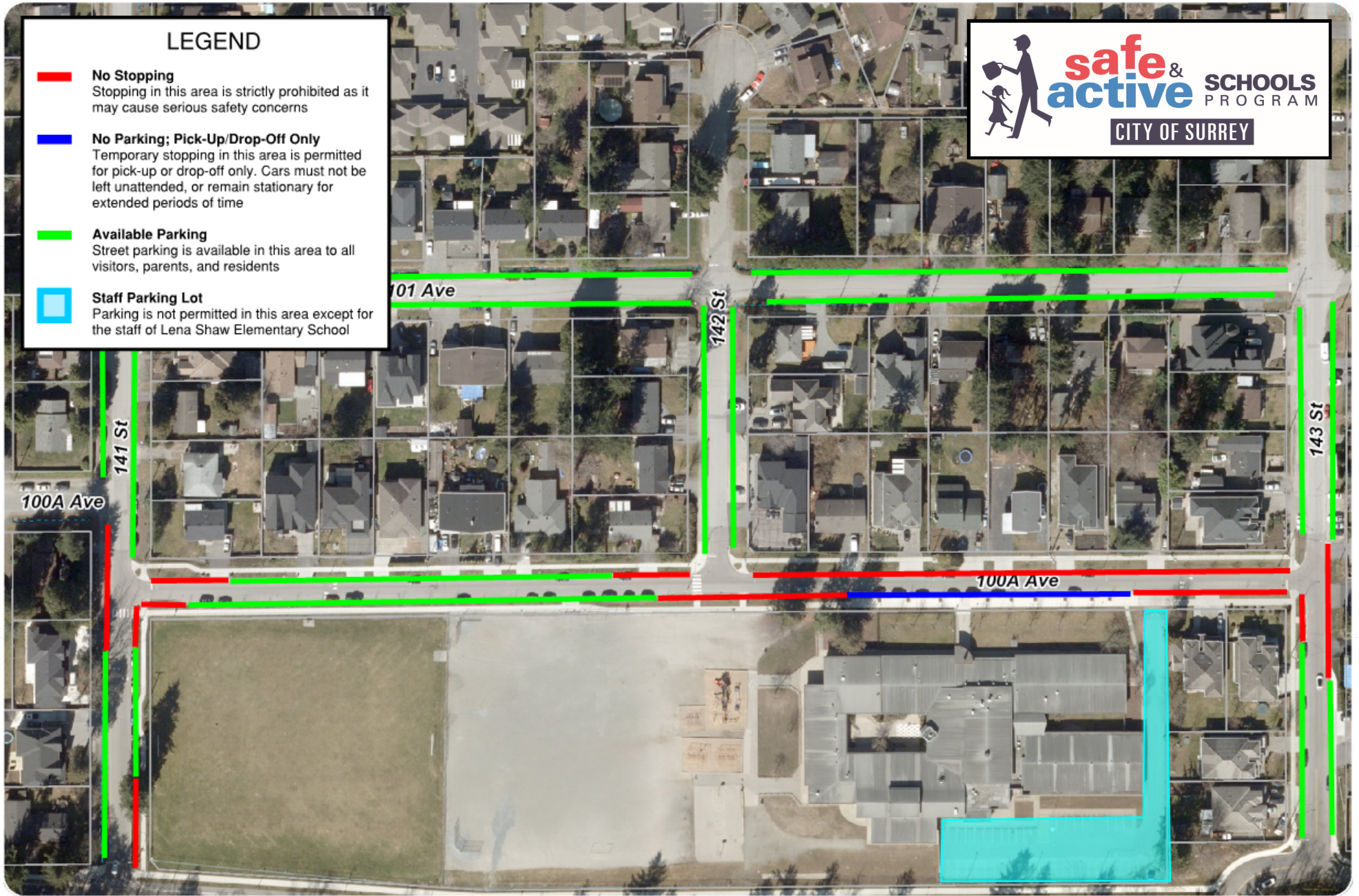


LEGEND

-  **No Stopping**
Stopping in this area is strictly prohibited as it may cause serious safety concerns
-  **No Parking; Pick-Up/Drop-Off Only**
Temporary stopping in this area is permitted for pick-up or drop-off only. Cars must not be left unattended, or remain stationary for extended periods of time
-  **Available Parking**
Street parking is available in this area to all visitors, parents, and residents
-  **Staff Parking Lot**
Parking is not permitted in this area except for the staff of Lena Shaw Elementary School



Parking Regulations: Lena Shaw Elementary School

The data provided is compiled from various sources and IS NOT warranted as to its accuracy or sufficiency by the City of Surrey.
This information is provided for information and convenience purposes only. Lot sizes, legal descriptions and encumbrances must be confirmed at the Land Title Office.