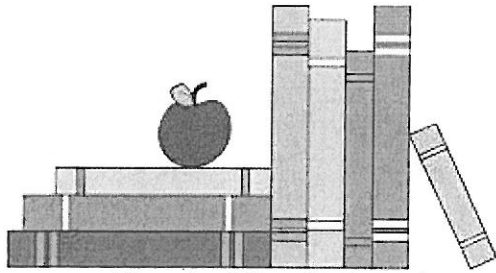


# MARY JANE SHANNON ELEMENTARY

10682 - 144 Street, Surrey, B.C. V3T 4W1  
Phone: 604-588-5991 Fax: 604-581-3763

**Principal:** Ms. Juanita Coltman  
**Acting Vice Principal:** Mr. Tom Lewis



Back To School

Look for newsletter and other school information posted  
on our school web site:

[www.surreyschools.ca/schools/mjshannon](http://www.surreyschools.ca/schools/mjshannon)

2020-2021 #2

September 14, 2020

*Translation Options to view this update in a language option of your choice, please review and enable the message translation options available through your email provider. While not exhaustive, we have provided links to popular email providers Microsoft Outlook and Gmail.*

Dear MJS Families,

It has been wonderful to see almost all our students come through the doors and into the school! We were impressed with our students – they arrived on time for their grade orientations! I would encourage you to continue to remind your child(ren) to maintain physical distancing on the playground when they arrive and leave school. Students are encouraged to arrive just prior to the beginning of class and to quickly make their way home after their face to face instruction is over. We need students to limit congregating for social purposes on school property.

Thank you again for your continued patience. We have now finalized our face-to-face classes. Once students are in their classes, we cannot move a student(s) to another class, because we need to limit contact.

If your child(ren) are in the blended program, you should be hearing from their classroom teacher this week about scheduling an orientation. We are offering 3 blended multi-age classes at the school.

The staff of Mary Jane Shannon are eager to welcome students back to school. We are dedicated to ensuring that you have a positive and safe school year.

Sincerely,

Juanita Coltman

## DAILY HEALTH CHECK REMINDER

Parents/guardians are reminded of their responsibility to complete a daily health check to assess their child(ren) for symptoms of COVID-19 prior to sending them to school for the day. We recommend printing a copy and/or taking a screenshot of the health check posted at the link below. It is not necessary to submit this checklist to the school.

- Below is the link to the BC Centre of Disease Control “Symptoms of COVID-19”  
<http://www.bccdc.ca/health-info/diseases-conditions/covid-19/about-covid-19/symptoms>

## VISITORS

As we would like to keep the MJS bubbles small, we will ask families to make appointments via email [mjshannon@surreyschools.ca](mailto:mjshannon@surreyschools.ca) if they need to meet with any staff member, and meet virtually whenever possible. If you arrive at the front door, please call the office, 604-588-5991, for assistance.

## BREAKFAST PROGRAM

**The breakfast program will begin on Thursday, Sept. 17th at MJS.** Students will maintain social distancing as much as possible while they sit in the Breakfast Club space to eat. Seating options include sitting at a table with their cohort, sitting with their siblings, and sitting by themselves. Students will wash their hands before eating. Students will be served by the school meal program aide, Mrs. Savage. Simple meals to go will be available for students who come to school after 8:30am, so they can eat at their desks.

## LUNCH PROGRAM

Lunch permission forms will be sent home on Monday, September 14th. Prompt return of lunch forms would be appreciated. **Lunch program will begin on Wednesday, September 16th.** There will be extra food available on Sept. 16th for student who have not yet to return their permission forms. Additional forms are available from their classroom teachers. Students are to wash their hands before eating.

## LEARNING GROUPS

- One primary and one intermediate class will be placed in learning groups of less than 60.
- Anytime that students are in contact with students or staff who are not a part of their learning group, they must remain two meters apart and/or wear a mask.

## MJS BELL SCHEDULE 2020-21

8:15am	Supervision on playground	Please send or drop off your students just before the bell.
8:30am	Classes begin	Teachers will welcome students at the assigned meeting area or entrance door.
10:20-10:35am	Recess	Students will be encouraged to socially distance on the playground.
11:45-12:30pm	Lunch	We play first then eat. Reminder to send your child with a lunch. We cannot accept lunches at the office.
2:30pm	Dismissal	Students will depart from their assigned door.
2:30-2:45pm	Supervision on playground	Students are encouraged to go straight home after the dismissal bell.

## **SCHOOL SUPPLY LISTS**

Grade level lists can be found on our MJ Shannon School Site under the “Students” section entitled “School Supply Lists.” Grade level copies were handed out during the Thursday Orientation Session. Please label your child’s school supplies before bringing them to school. Students should not be sharing school supplies. If you order school supplies, we will deliver the package to your child’s class.

## **ATTENDANCE PROCEDURES**

- Please report student absences by email: [mjshannon@surreyschools.ca](mailto:mjshannon@surreyschools.ca). Please ensure the word “absence” appears in the subject line and please put your child’s full name and grade in the body of the email.
- You can also notify the school of a student’s late arrival or early dismissal.
- Students who are late should go to the front of the school, but not enter the building. A staff member, while maintaining social distance, will greet you outside the front door with a welcome slip.
- Students who have symptoms of COVID-19, even if mild, are required to stay home. Below is the link to the BC Centre of Disease Control “Symptoms of COVID-19” <http://www.bccdc.ca/health-info/diseases-conditions/covid-19/about-covid-19/symptoms>
- Parents may also leave a message at 604-588-5991 to report a student absence, late arrival or early dismissal.

Format when reporting an absence:

- Student’s First Name
- Student’s Last Name (please spell the last name clearly)
- Grade
- Date of absence (whole day or state the portion of the day)
- Reason for absence (e.g.: ill, appointment, vacation)

## **LEAVING SCHOOL ONCE CLASSES HAVE BEGUN**

If a student is leaving the school for any reason, parental permission is required, so a parent or guardian must call the office to sign a child(ren) out.

## **ARRIVAL AND DEPARTURE FROM SCHOOL**

- Students will have designated entrance and exits based on the location of their classroom within the school. Students will be assigned their entrance and exit doors by their classroom teacher(s). This is to reduce congestion, touch points, and mixing of learning cohorts. We realize this means some students may have to walk or bike a little farther to get to their designated entrance and appreciate your cooperation with this.
- Students will be asked to leave school immediately after 2:30pm unless they are staying for an extracurricular activity such as a club meeting, to get extra help, or to see a staff member.

# MARY JANE SHANNON SCHOOL CALENDAR 2020-2021

## September 2020

Tues. Sept. 8: School opens – 10:00-11:00 am  
Mon. Sept. 14: Dot Day  
Thurs. Sept. 24: Open House - Meet the Family  
Sept. 21-25: Terry Fox Week 40<sup>th</sup> Anniversary  
Mon. Sept. 28: Pro-D Day-School Closed  
Wed. Sept. 30: Orange Shirt Day

## October 2020

Tues. Oct. 7: Student Individual Photo Day  
Mon. Oct. 12: Thanksgiving-School Closed  
Oct. 14-22: Scholastic Book Fair  
Oct. 14-15: Goal Setting Conferences  
Wed. Oct. 14: Early Dismissal 1:30pm - Conferences  
Fri. Oct. 23: Pro-D Day-School Closed

## November 2020

Wed. Nov. 4: Student Individual Retakes  
Fri. Nov. 6: Pro-D Day-School Closed (in lieu)  
Tues. Nov. 10: Remembrance Day Assembly  
Wed. Nov. 11: Remembrance Day Stat-School Closed  
Fri. Nov 13: Diwali

## December 2020

Tues. Dec. 1-4: CSL into office  
Thurs. Dec. 10 Band/Choir Afternoon Assembly  
Dec. 14-16: Fine Arts Week  
Tues. Dec 15: Winter Craft Fair  
Wed. Dec. 16: Winter Sing-along  
Dec. 14-18: CSL Reports go home  
Fri. Dec. 18: Last day of school before Winter Break  
Dec. 24-Jan. 4: Winter Break

## January 2021

Mon. Jan. 4: School reopens  
Jan. 18-22 Zumba class school-wide

## February 2021

February: Black History M  
Fri. Feb. 5: Global Play Day  
Fri. Feb 12: Lunar New Year  
Mon. Feb. 15: Family Day-School Closed  
Fri. Feb. 19: Pro-D Day-School Closed (in lieu)  
Wed. Feb. 24: Pink Shirt Day  
Thurs. Feb. 25: Class/team Photos  
Fri Feb 26: School Science Fair

## March 2021

Mar 5: District Science (TBA)  
Mar. 1-5: CSL into office  
Wed. Mar. 10: CSL Reports go home  
Fri. Mar. 12: Last day of school before Spring Break  
Mar. 15-19: Spring Break  
Mar. 22-26: School Closure Days  
Mon. Mar. 29: School reopens

## April 2021

Fri. Apr. 2: Good Fri.-School Closed  
Mon. Apr. 5: Easter-School Closed  
Thurs. Apr. 22: Earth Day at school  
Thurs. Apr. 22: Early Dismissal, 1:30pm  
Thurs. Apr. 22: Student-Led Conferences

## May 2021

Fri. May 7: Pro-D Day-School Closed  
May 13: Eid Celebration  
May 17-21: School Play (2 evening performances - tentative)  
Mon. May 24: Victoria Day -School Closed  
Fri. May 28: Early Dismissal, 1:30pm, Collab. time  
Mon. May 31: Pro-D Day-School Closed

## June 2021

June 2 Track Meet (TBA)  
June 7-11: CSL into office  
Fri. Jun. 11: Sports/Fun Day  
Jun. 17-19: Grade 7 Camp  
Fri. Jun. 18: Beach Day  
Mon. Jun. 21: Aboriginal Day  
Tues. Jun. 22: Grade 7 Celebration  
Wed, Jun. 23: Aboriginal Day & Picnic  
Thurs, Jun. 24: Last day, Celebration of Learning, Final CSL report issued, Early dismissal, 1:30 pm  
Fri, Jun. 25: Administration Day

# MARY JANE SHANNON STUDENT ENTRANCE/EXIT MAP 2020/21

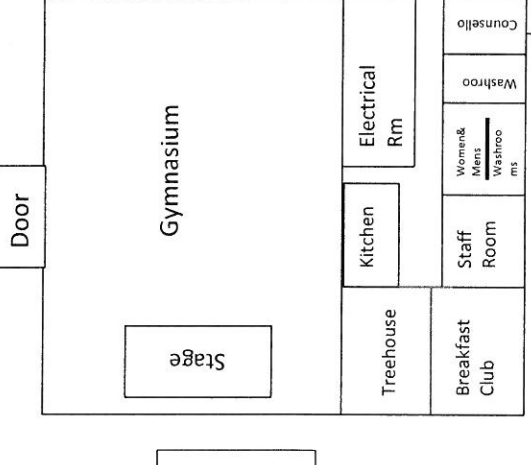
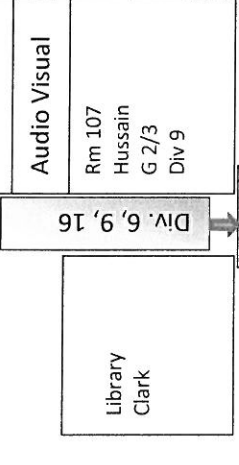
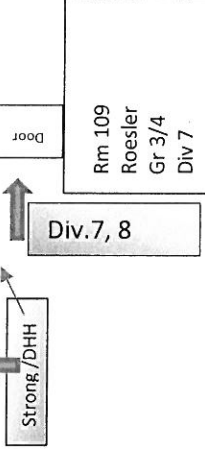
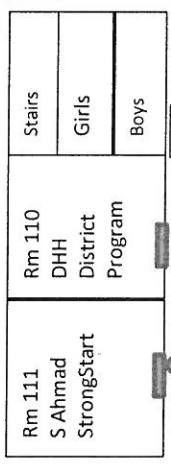
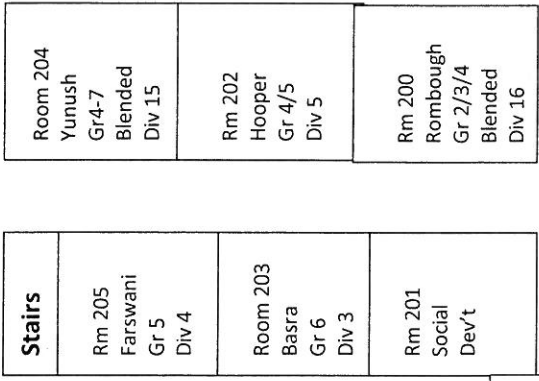
PLAYGROUND

106A Avenue

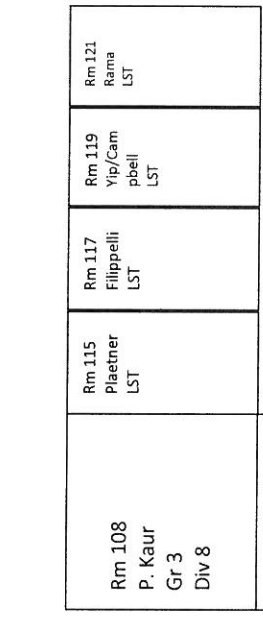
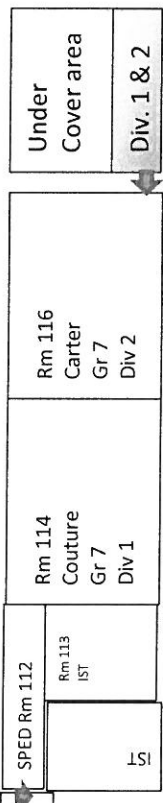
144 Street

108 Ave

## Upstairs classrooms

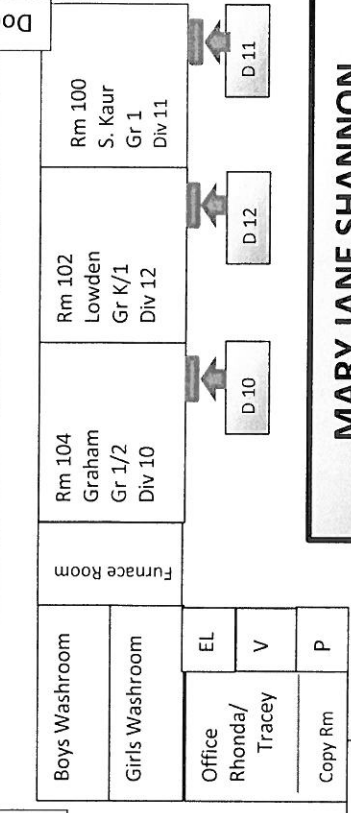
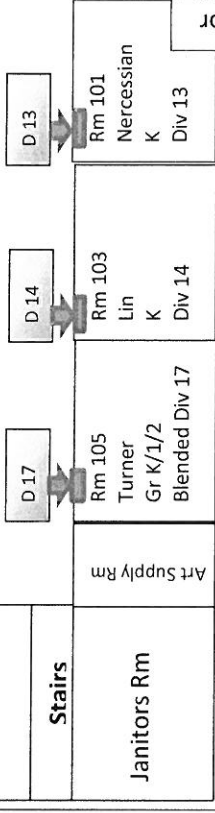


Div. 3, 4, 5, 15



Courtyard

Main Hallway



D 13

D 14

D 17

D 10

D 12

D 11

Main Door

Basketball  
court