



École Élémentaire
Peace Arch
Elementary School

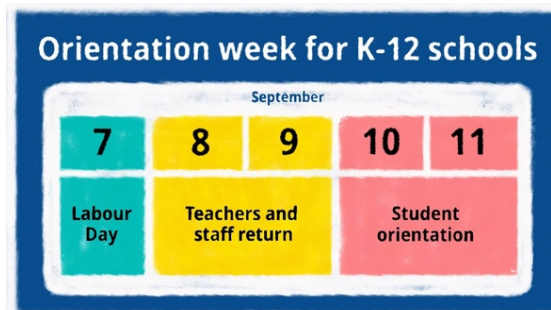
15877 Roper Avenue
White Rock, BC V4B
2H5 Phone: 604-536-
8711

Dear Parents/Guardians

September 5, 2020

The staff and I have been busy readying our school to receive the children who will be joining us for face-to-face learning for the weeks to come. Some of our families have chosen the Surrey Blended Transitions program, which will keep those children tied to our school and able to return to face-to-face instruction in a Peace Arch classroom in January, 2021. Please remember, if you are choosing to access the Surrey Blended Program that you register your children before 4:00 p.m. on Tuesday, September 8th.

Below is a reminder of what the week ahead will look like for those returning in September:

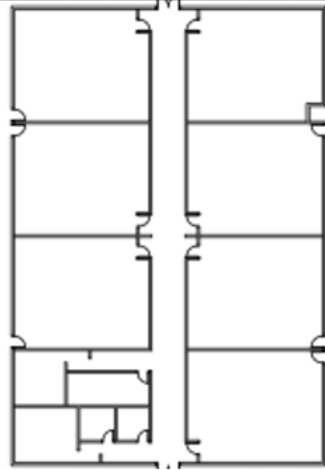


Sept. 10 & 11

- Student Orientations – share information and orient students
- physical distancing maintained
- groups are less than 10 people = all rooms in use and all staff assisting
- maps and orientation groups will be posted
- 9:00 – 10:00 a.m. Grades 1,2,3,4
- 11:00 – 12:00 a.m. Grades 5,6,7
- Kindergarten 12:30 – 1:30 Group A/C/E – Sept. 10
- Kindergarten 12:30 – 1:30 Group B/D/F – Sept. 11
- staff finalize class lists and cohorts
- communicate class information to families in anticipation of Monday

In order to achieve physical distancing measures for staff and students, we have designated meeting areas around the school for children to gather according to grade. All staff will be on the grounds beginning 15 minutes before each group meeting time to assist the students. Please see the map below for the meeting and dismissal areas your child(ren) will use on September 10th and 11th.

SEPTEMBER 10 AND 11 MEETING & DISMISSAL LOCATIONS



Orca House (100) – qel'lhulmuchten

Gravel Field

**Grade 3: 9:00-10:00
Grade 7: 11:00-12:00**

Grade 4: 9:00-10:00

Please meet in your designated meeting spot and line up at the markers, in alphabetical order according to the posted signs.

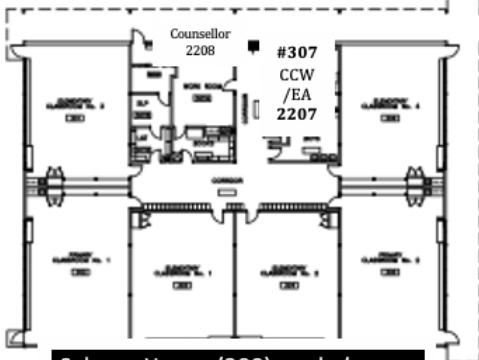
Wolf House (K) – st'eagye



Court Yard in front of office

**Grade 1: 9:00-10:00
Grade 6: 11:00-12:00
Kindergarten: 12:30-1:30
-Group ABC Sept.10
-Group DEF Sept.11**

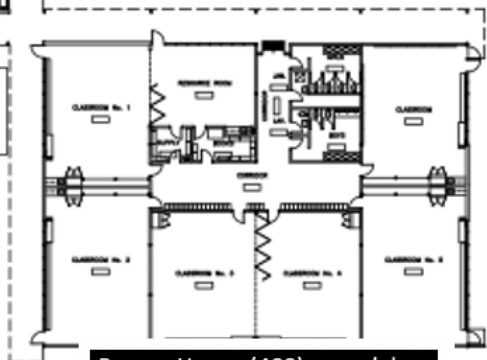
Bear House (200) – schetawen



Salmon House (300) – scha'anexw

**Grade 2: 9:00-10:00
Grade 5: 11:00-12:00**

Court Yard with Picnic tables



Beaver House (400) – sqw'elaw



Please encourage your child(ren) to move into their designated area(s) independently in order to limit the number of people on the grounds while we organize the children. The students will find markers to assist them where to stand in order to maintain a physical distance from other children. Please expect the students to meet in these designated areas and be dismissed from them as well on both days, September 10th and 11th.

If parents feel they need to be on the grounds with their children, we ask that you physically distance from each other and the students and staff in your midst.

At the end of each session, we ask that students and guardians clear from the school grounds promptly so we can prepare to receive the next group of students. ***Please do not send any school supplies to school until the children are moved into their permanent class on Monday, September 14th.***

We look forward to welcoming your children back to school very soon! If you have any questions or concerns, please don't hesitate to call the office at 604-536-8711 and we will do our best to answer your questions.

Please enjoy a wonderful long weekend ahead, and I look forward to meeting you all soon!

Kind regards,
Laureen

Ms. Laureen Boulet
Principal
École Peace Arch Elementary
Ph. 604-536-8711

