

W.E. Kinvig Elementary School

We're on the Web!

Newsletter 01/11/22
Volume 1, Issue 5

www.surreyschools.com/schools/wekinvig

Principal: Jas Atwal
Vice-Principal: Shane Reader



January Newsletter..

Hello all,

Happy New Year and welcome back. We thank you for your support and help throughout the year. Thank you for your understanding with the delayed start and helping make the transition back to school smooth. The classes are up and running and our staff and students are ready to begin the next phase of their learning. For now, students are in school for face to face learning and no online teaching is being offered.

We have reviewed our safety protocols and prepared for a functional closure in case we need to close schools for a while. We will only transition to online learning if we are in a functional closure. Your child's teacher may send information home to prepare you in case we are in that situation moving forward. Due to Covid 19, we are unable to allow visitors in the school unless prior arrangement has been made. Please check in at the office for any questions you may have.

Thanks again,

Jas Atwal

Contents

January News	1
Kindergarten Registration	1
Upcoming Calendar / Bells	2
School Staff	2
School Closure Info	3
Masks and Safety	3
Lates /Absences	3
Visitors/Lunches	3
Inclement Weather	4
Drop Off/Pick Up Safety	4
Picture Retakes	4
Change of Clothes	4
Covid Safety	4
Health Check Sheet	5

Upcoming Events

- ◆ Kindergarten Registration Starts
- ◆ Picture Retakes
- ◆ Interim Report Week

Kindergarten Registration Starts...

It's time to register for KINDERGARTEN. Those children who will turn 5 before January 1, 2023 are eligible to begin school in September 2022. Registration began on Monday, January 10th and can be done online through the school District website.

To register, take pictures (to attach) or (scan and attach) the citizenship for both the parent and your child, proof of residency, and proof of guardianship. For proof of residency, we require any three of the following: purchase or rental agreement, income tax statement, property tax statement, utility bill, drivers licence, Care Card, BC identification or a signed letter from your landlord. These can also be scanned and attached (or take pictures to attach).

It is very important to register as quickly as possible as the District bases the teacher allocation based on our enrollment. Thank you for your assistance in getting registrations in as soon as possible.

Upcoming Calendar Events / Bells...

Calendar of Large Events

- Jan 10 – Kindergarten Registration Begins**
Jan 13 Picture Retakes
Feb 8-11 Interim Report Week
Feb 10 Early Dismissal Day at 1:35 pm
Feb 21 Family Day Holiday (No School)
Feb 25 Non-Instructional Day (No School)
Feb 21-25 Kindness Week
Feb 23 Pink Day/Anti Bully Day
Mar 7-11 Spirit Week
Mar 11 Report Cards Go Home
Mar 14-25 Spring Break (No School)
Mar 28 First Day Back (From Spring Break)

SCHOOL HOURS

- 8:20 - Playground Supervision Begins
 8:30 - Students may enter the building
 8:35 - Start of Morning Classes
 10:15 - Recess
 10:30 - End of Recess
 11:50 - Lunch (Play Begins)
 12:15 - Eating Entrance Bell
 12:35 - Start of afternoon classes
 2:35 - Dismissal
 2:50 - Playground Supervision ends

Office Hours (Phones)

8:00 am—3:00 pm—Monday to Friday

WE Kinvig Staff-Enrolling

Principal		-Mr. Atwal
Vice Principal		-Mr. Reader
Head Secretary		-Ms. Ansell
Clerk		-Ms. Kang
Div. 1	Grade 7	-Mr. Needham
Div. 2	Grade 6/7	-Mr. Nyberg
Div. 3	Grade 6/7	-Mr. Lourotos/Reader
Div. 4	Grade 5/6	-Ms. Moore
Div. 5	Grade 5	-Ms. Sotola
Div. 6	Grade 4/5	-Mr. Dhaliwal
Div. 7	Grade 4/5	-Mr. Aujla
Div. 8	Grade 3/4	-Ms. Uppal/Nijjar
Div. 9	Grade 3	-Ms. Ahmad/Knight
Div. 10	Grade 2/3	-Ms. Trzaskalik
Div. 11	Grade 2/3	-Ms. Menelaws/Ferguson
Div. 12	Grade 1/2	-Ms. Macri
Div. 13	Grade 1/2	-Ms. Wu
Div. 14	Grade 1	-Ms. Takhar
Div. 15	Grade K/1	-Ms. Smith
Div. 16	Grade K	-Ms. Czihaly
Div. 17	Grade K	-Ms. Kaila

WE Kinvig Staff-Non-Enrolling

Music	-Mr. Maksymiw
Librarian	-Ms. Ferguson
Counsellor	-TBA
Learner Support	-Ms. Habib, Ms. O'Reilly,
Learner Support	-Ms. Krejcik, Ms. Sawhney,
Learner Support	-Ms. Kummen, Ms. Young
Band	-Mr. Penner
Early Literacy	-Ms. Cho
Speech Pathologist	-Ms. Bonato
Integration Support	-Ms. Sahota, Mr. Drayson, - -Ms. Sanghera
Child Care Workers	-Ms. Stoney
<u>Special Ed. Assistant</u>	-Ms. Bhamji, Ms. Blackett, Ms. Burda, Ms. Charette, Ms. Duong, Ms. Mouro, Ms. Parr-Pearson, Ms. Quin, Ms. Serrano, Mr. Sikorski, Ms. Varela, Ms. Wenzlaff
Aboriginal Worker	-Ms. Johnson
School Meal Coordinator	-Ms. Reid
Custodians	-Ms. Kandola, Ms. Frank
Lunch Monitors	-Ms. Fedoruk, Ms. Khan, Mrs. Van Zyderveld
Strong Start Facilitator	-Ms. Felix ("Bobbie")
Outreach Worker	-Emerson Marshall



**Honesty-Caring-
Leadership**

13266 70B Avenue
Surrey, BC V3W8N1

Phone:
(604) 594-1135

Fax:
(606) 594-8769

School Closures Information...

Sometimes extreme weather conditions or other circumstances can cause class cancellations at a school, or district wide on short notice. In the event of class cancellations, the Surrey School District will post information on its web site at www.surreyschools.ca and provide updates to the following radio stations:

CKNW - 980 AM or www.cknw.com
News 1130 AM or www.news1130.com
CBC Radio - 690 AM or www.cbc.ca/bc

The District will do its best to communicate the status of schools by 7:00 am.

Sometimes the decision to send students home if they have care can come to us close to the entry bell. We will always keep all students who are without parents and contact you by phone for safe pick up. All students should check in to the office and should never return home on their own without contact made by the school staff. **Please discuss this safety protocol with your children.**

Lates and Absences

Please call and let us know if your child will be late or absent. We call you if you have not called in so we can ensure the safety of your child. If we are not available to pick up the phone, please leave a message on the voicemail. This would help us at the office immensely.
(604-594-1135)

Lunches/Water Bottles

Part of the recommendations is for all students to bring water bottles and lunches to school daily in the morning. We will not be allowing parents in the building or to drop off lunches as we try to limit any exposures from outside the school.



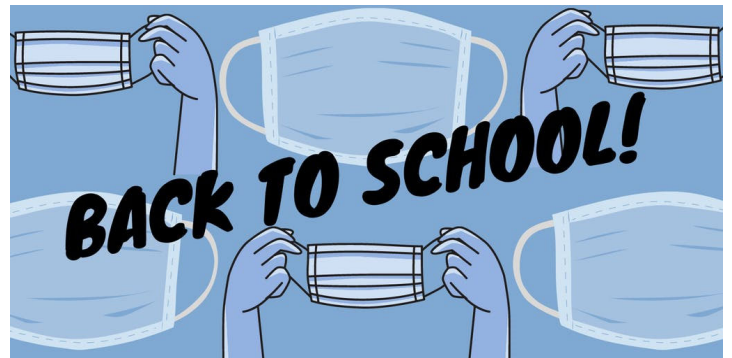
Parent Visitor Protocol

Due to COVID 19 restrictions, we will not be allowing parents and visitors in the building. All visitors should report to the front window of the school. One of our office staff will be happy to assist you.



Mask and Safety Protocols...

Masks are mandatory for all Elementary school students and staff. We strongly encourage you to send your child with 3 ply masks as they provide better protection than cloth masks. Masks should fit properly for the child's face so that the nose and mouth are covered and no open spaces are on the sides of the face. We encourage parents to keep your 6 feet social distancing while waiting for your child to enter or exit the building. We also encourage parents to wear mask while on site as well.



Inclement Weather...

The weather can be unpredictable in December. Please check the weather in the morning and ensure that your child is dressed appropriately. Please be careful when walking to school as the ground may be icy and slippery. If you are dropping off or picking up your child please follow Safe Drop Off guidelines. Have a waiting spot for picking up your child.

Picture Retakes...

Students will have their picture retakes on Thursday, January 13. This will be only for students that want a retake or for students that missed picture day in November. They use a green screen so please do not wear green that day.



Change of Clothes

Some students have had to call home to get a change of clothes after Recess or Lunch as they have slipped and fallen. It is not a bad idea to have a change of clothes at the school or in their backpack, particularly the primary students.



Drop off and Pick Up Safety Policy...

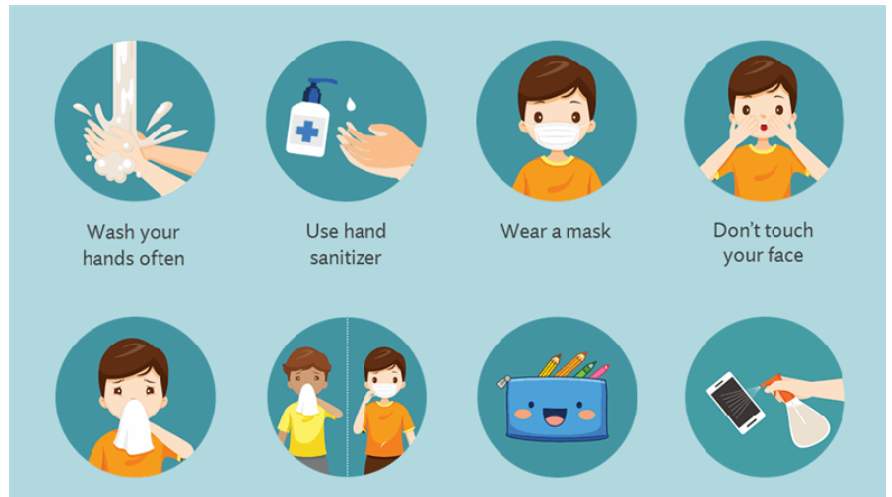
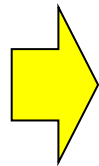


Please drive slow and safe when dropping off and picking up your child near the school grounds. In addition:

- ALWAYS HAVE YOUR CHILDREN EXIT TO THE SIDEWALK SIDE OF THE VEHICLE
- Never open the door to the interior of the street to exit out as cars may be passing
- Please drive slowly in front of the school.
- Look both ways before exiting the drop off area to go back in the passing lane
- Do not double park on the street as it creates unnecessary congestion
- Do not overpass a stopped car as they may be stopped for students to cross
- Park one block down the street and walk to pick up your children
- Do not park or drive in the parking lot during pick up or drop off times.

Covid Safety Protocols and How You Can Help

Students and staff have many protocols in place to make sure we can keep everyone safe. Routine handwashing, sanitizing, frequent custodial cleaning of high touch surfaces, distancing and cohort development are daily procedures. We have had a few Covid exposures in December but, Fraser Health has confirmed that our protocols are working.



We have had no student to student transmissions at our school. Currently, we have no active Covid exposures on site. A large part of this is due to the cooperation of our parent community. You have been doing your daily health checks of your children and are not sending your child when they show symptoms of illness or Covid.

Please do your Daily Health Check and make sure your child does not have symptoms of Covid-19.



Key Symptoms of Illness*	Does your child have any of the following key symptoms?	Circle one	
		YES	NO
	Fever	YES	NO
	Chills	YES	NO
	Cough or worsening of chronic cough	YES	NO
	Shortness of breath	YES	NO
	Loss of sense of smell or taste	YES	NO
	Diarrhea	YES	NO
	Nausea and vomiting	YES	NO
International Travel	Have you returned from travel outside Canada in the last 14 days?	YES	NO
Confirmed Contact	Are you a confirmed contact of a person confirmed to have COVID-19?	YES	NO

*Check BCCDC’s [Symptoms of COVID-19](#) regularly to ensure the list is up to date.

If you answered “YES” to one of the questions included under ‘Key Symptoms of Illness’ (excluding fever), you should stay home for 24 hours from when the symptom started. If the symptom improves, you may return to school when you feel well enough. If the symptom persists or worsens, seek a health assessment.

If you answered “YES” to two or more of the questions included under ‘Symptoms of Illness’ or you have a fever, seek a health assessment. A health assessment includes calling 8-1-1, or a primary care provider like a physician or nurse practitioner. If a health assessment is required, you should not return to school until COVID-19 has been excluded and your symptoms have improved.

Please see the online daily health check link - You can use this as a tool to help guide you for attendance questions if you are feeling symptoms. <https://www.k12dailycheck.gov.bc.ca/healthcheck?execution=e1s1>

BE Kind Shirts

Be Kind shirts will be sold by the school until January 25th. The shirts will be sold through the School Cash Online system. If you would like a shirt for anti bully day, please order one by January 25.



Black Excellence Day

Friday January 15th is Black Excellence Day which aims to highlight past and present struggles of Black and other racialized Canadians. Black Excellence day is a new initiative in BC and aims to spark important conversations about anti-racism and unity among various ethnic groups. We will ask our students to wear black shirts on January 15 to support this initiative.