



Old Yale Road Elementary Addition

School District No. 36

Board of Education Sketch Plan Presentation

KMBR | ARCHITECTS
PLANNERS

March 12, 2025

7:00pm

Today's Agenda

- 1 Project Team**
- 2 Site Context**
- 3 Existing Conditions**
- 4 Program**
- 5 Site Plan**
- 6 Floor Plans**
- 7 3D Views**
- 8 Project Schedule**

We thank you for the opportunity to present to you today

Project Team

SD36 Project Manager *Rosemarie Cerezo*

Autumn Sweet

Trevor Wong

Jacob Sol

Sam le Riche, Principal

Architects *KMBR Architects Planners Inc.*

Structural Engineers *Bush, Bohlman & Partners LLP*

Mechanical Engineers *Rocky Point Engineering Ltd.*

Electrical Engineers *Jarvis Engineering*

Civil Engineers *Coastland Engineering & Surveying Ltd*

Code Consulting *Eriksberg Engineering*

KMBR ARCHITECTS



BASSEM TAWFIK
Principal

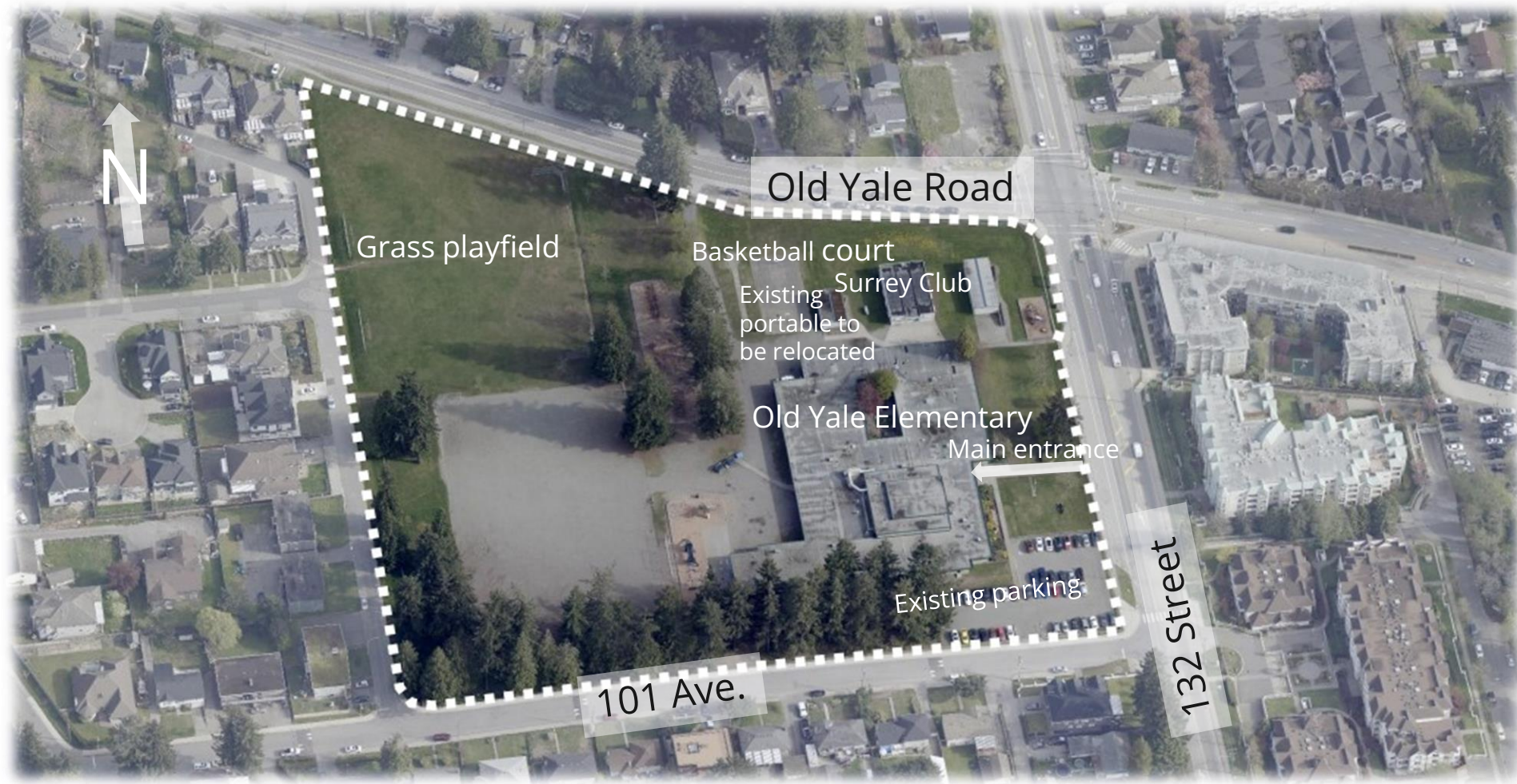


JOANA NICOLAE
Project Manager

Site Context



Existing Conditions



Existing Conditions

Front Entrance



North Side



East Side

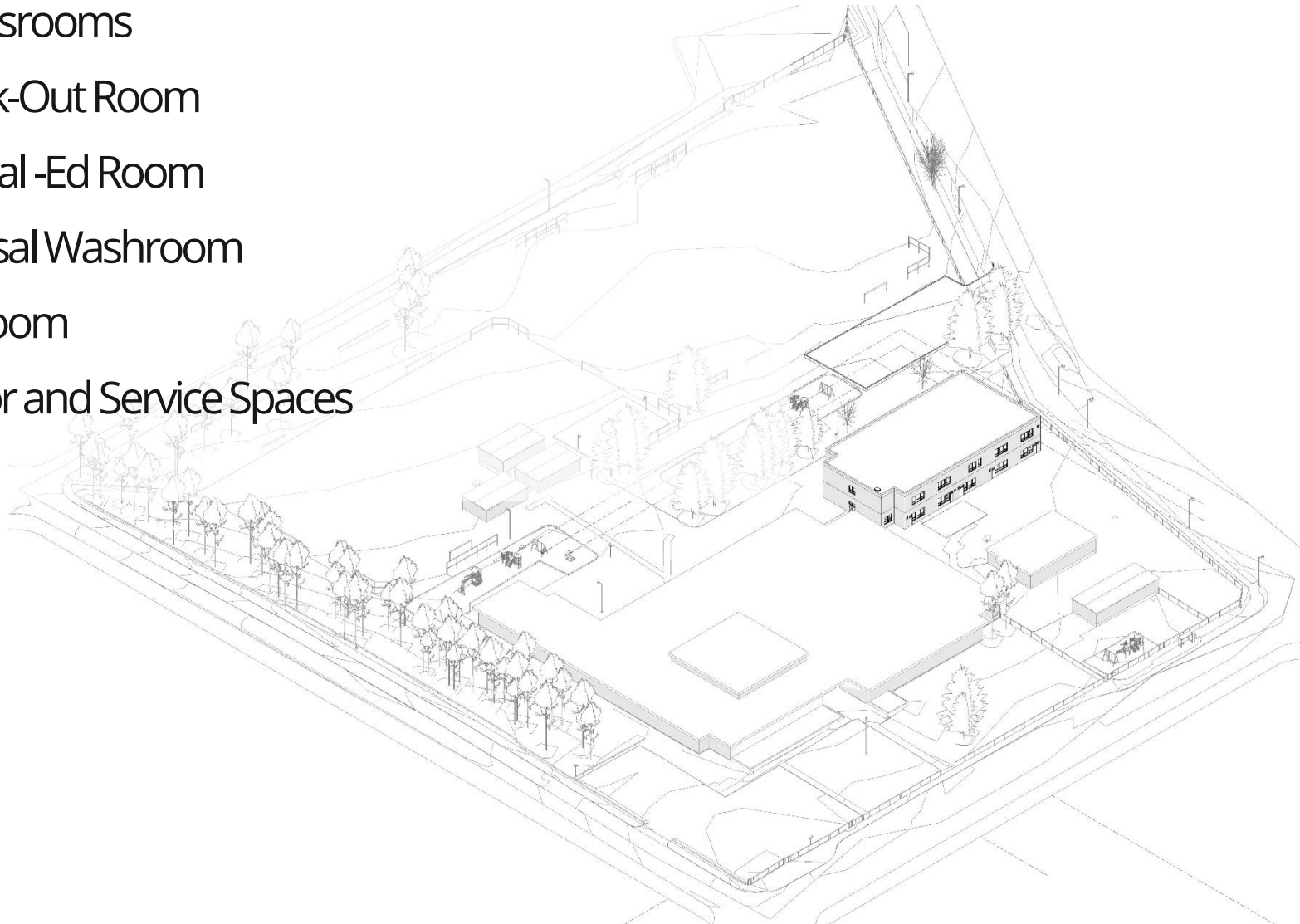


Basketball court to the NW entrance

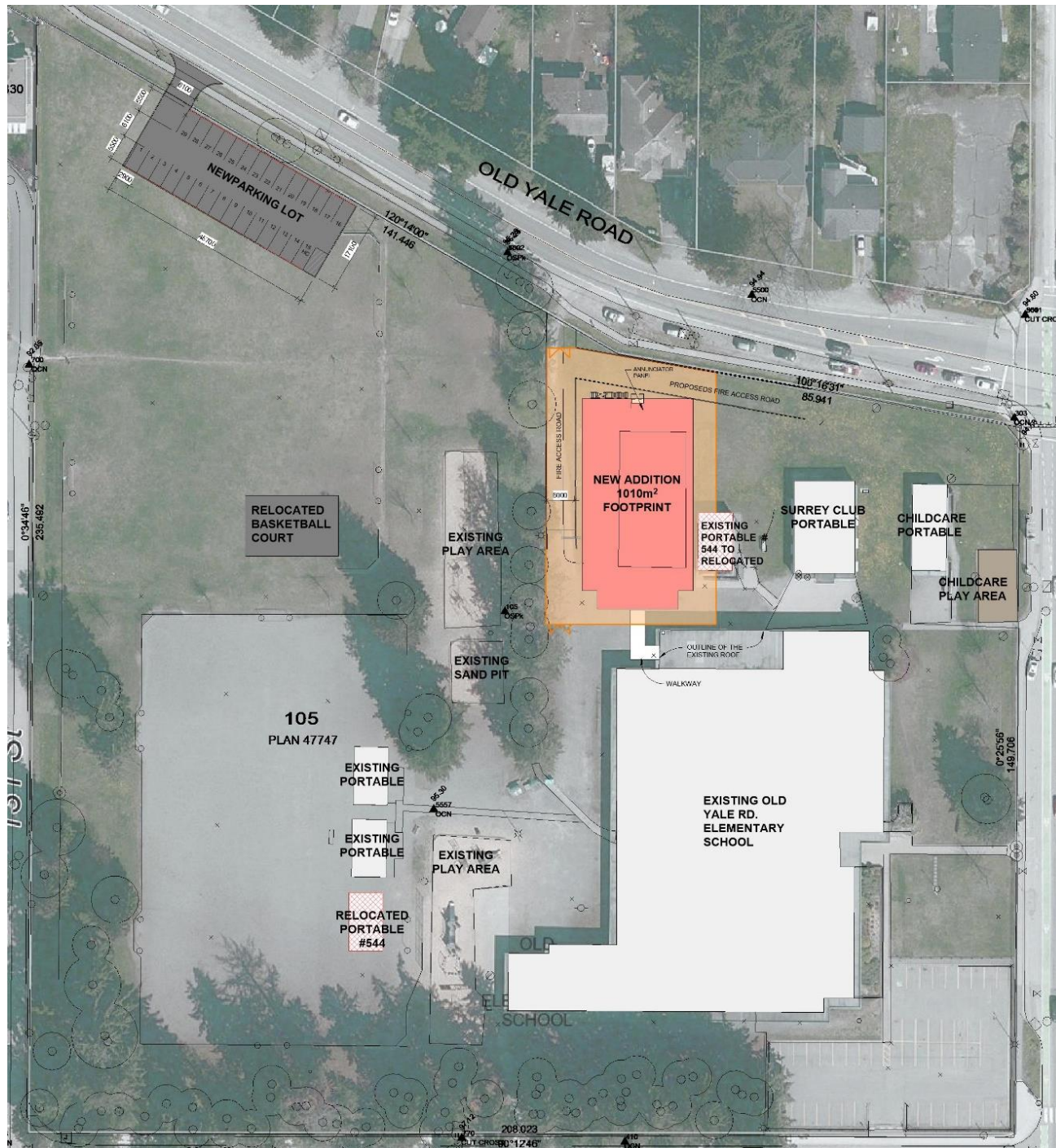


Addition Program:

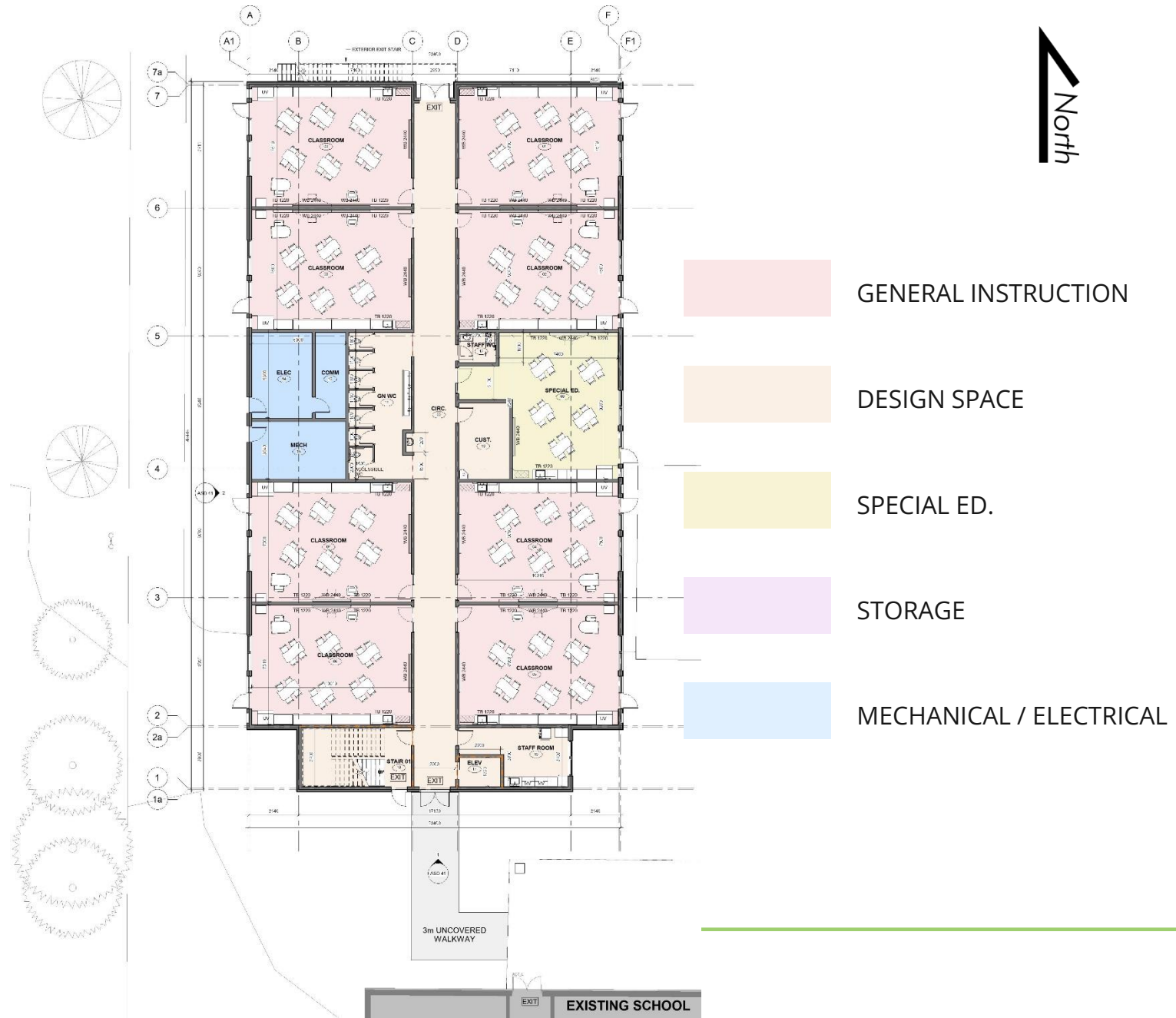
- 17 Classrooms
- 1 Break-Out Room
- 1 Special -Ed Room
- Universal Washroom
- Staff Room
- Elevator and Service Spaces



Site Plan



Overall Main Floor Plan

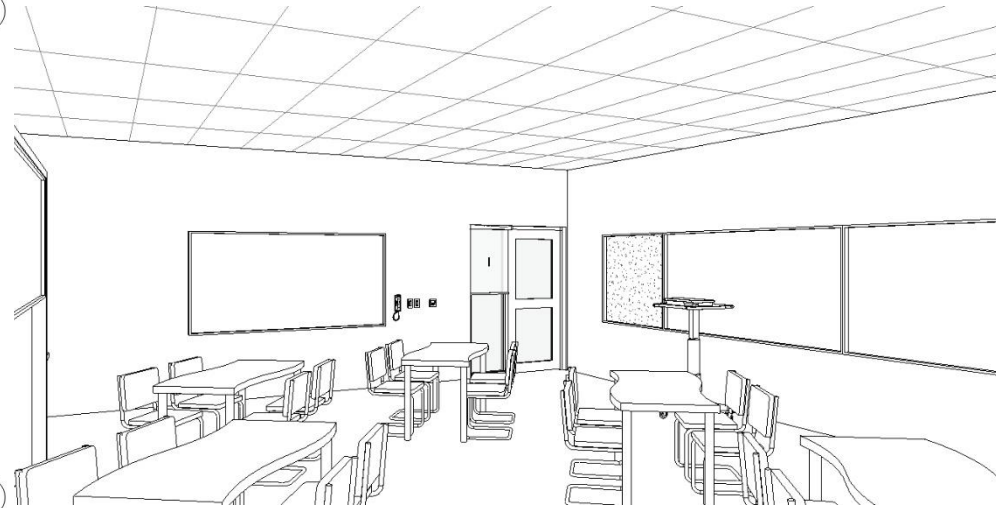
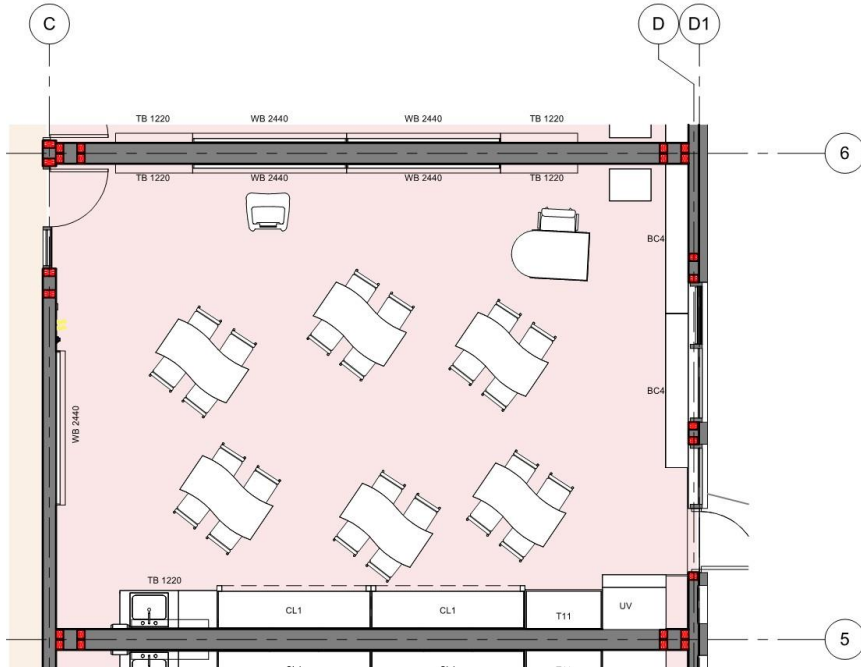


Overall Second Floor Plan



- GENERAL INSTRUCTION
- DESIGN SPACE
- SPECIAL ED.
- STORAGE
- MECHANICAL / ELECTRICAL

Typical Classroom Layout



North West View



North East View



Project Milestones

Old Yale Elementary New Addition Schedule	2024		2025												2026						
	N	D	J	F	M	A	M	J	J	A	S	O	N	D	J	F	M	A	M	J	J
Schematic Design																					
Building Permit Submission																					
Building Permit Issuance																					
Construction drawings phase																					
Tender																					
Construction - early works (portable relocation)																					
Construction - New Addition																					
Construction - parking lot and basketball court																					
Occupancy																					
Move-in-date																					
On-site works / Landscaping																					

• **THANK YOU**



QUESTIONS?

