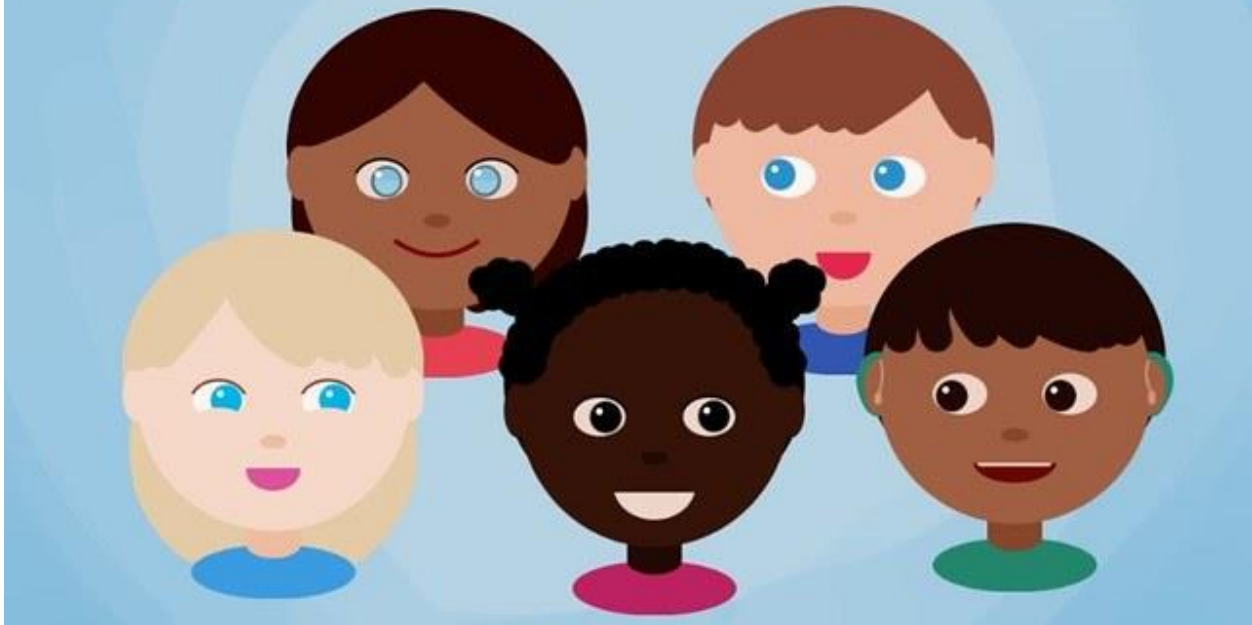


Be Yourself



Panorama Park Elementary January 30
to February 3, 2023

Monday, January 30, 2023

Tuesday, January 31, 2023

Wednesday, February 1, 2023

- Intra-mural sports at lunch - Grade 4 Red & Green Teams
- Global Play Day

Thursday, February 2, 2023

- Intra-mural sports at lunch - Grade 4 Yellow & Blue Teams
- Division 4 Space Center Field Trip

Friday, February 3, 2023

- Division 9 SFU Field Trip

Global Play Day

On Wednesday February 1, some of our classes will be participating in Global Play Day. Global Play Day is a grassroots effort to create opportunities for unstructured play for children. Teachers will be present during the play, but will not interfere or direct the play. We will be playing within the classroom as well as having time to play outside for a longer period of time.

Why do we play you ask? It helps boost [language development](#), [problem solving](#), [risk management](#) and independent learning skills. Play is linked to improvements in academic skills, classroom behaviour, healthy emotional attitudes and better adjustment to school life.

Classroom teachers will share if toys from home are permitted. Each classroom teacher will be sharing a letter with their expectations for this day.

To celebrate our Global Play day, our school will also be taking our play outside in the form of an 'extra recess' from 1:30 to 1:45 pm on February 1. This outdoor play will be supervised by classroom teachers.

Kindergarten Registration



THE SURREY SCHOOL DISTRICT IS NOW USING A WEB-BASED [ONLINE REGISTRATION FORM](#)

Children who will turn five years old before January 1, 2024 are eligible to begin school in September 2023.

Once submitted, the form and any supporting documents will be available to school staff and the Principal who will use their judgement to determine if documentation requirements have been satisfied.

The following documents are required to complete the registration process and may be uploaded to the registration portal or presented in-person at the catchment school or school-of-choice:

Why do we play you ask? It helps boost [language development](#), [problem solving](#), [risk management](#) and independent learning skills. Play is linked to improvements in academic skills, classroom behavior, healthy emotional attitudes and better adjustment to school life.

What we need from you:

TOYS

On Tuesday, February 2, 2022 your child is invited to bring a few of their favourite toys or games to school. The only restrictions: these toys may NOT require batteries or electricity and cannot be toy weapons of any kind. **No devices.** Some ideas are board games, dolls, Legos, blocks, trucks, cars, racetracks, playing cards, empty cardboard boxes, markers, jigsaw puzzles, blankets (for forts), social games (charades, Pictionary, etc.) The only exception on the electronics rule would be a board game that has an electronic timer, an electronics play kit, or similar.

To celebrate our Global Play day, our school will also be taking our play outside in the form of an 'extra recess' from 1:30 to 1:45 pm on February 2. This outdoor play will be supervised by classroom teachers.

PART ONE: Required documentation (does not have to be from British Columbia)

1. Photo identification for the parent/guardian such as: driver's licence, passport, Photo BC Services Card, BCID card.
2. Evidence of guardianship (as shown on child's birth certificate, or other appropriate legal documentation, such as, landed immigrant document or guardianship order).
3. Evidence of birth date for the student (e.g., birth certificate or passport).

PART TWO: Evidence of residence for the parent/guardian in British Columbia

4. Valid government issued documentation showing the address of residence with the name of ordinarily resident parent/guardian (e.g., BC Driver's License, BC Services Card, BCID or ICBC Registration Document, etc.). If the above documents are not available, the Principal uses discretion to register students.

2023 Student Learning Survey

The Student Learning Survey (SLS) has been administered every year in BC public schools since 2001. Prior to 2016-17 it was known as the Student Satisfaction Survey. It is the only source of province-wide information of children's learning experiences. The information is very helpful for others like the Ministry of Health, who use it to improve health services for children across BC. Your participation is an important contribution to improving the educational experiences of children.

This survey is voluntary and your response is encouraged, not required. **Please do not include any third-party information (e.g. talk about other specific people) survey or any personal information about yourself.** If any personal or identifying information about yourself or others is included it will be deleted before results are processed and stored. Data will be stored in Canada and accessible only within Canada.

Parent Surveys:

- Parents may access the survey by the Direct Access from the website listed below.
- Surveys are to be completed by parents with children in Grades 4, 7, 10, and 12.
- A parent may complete a survey for each child in the targeted grades.
- The parent survey is available in English, French and 16 other languages.
- Parents can complete surveys on their own time.

The [2022/2023 Student Learning Survey](#) (SLS) for students in Grades 4, 7, 10, and 12, as well as parents, staff, and principals/vice-principals opened on January 3, 2023. The survey will remain open until April 28, 2023.

Protect Yourself And Others This Cold And Flu Season!



Nobody likes being sick, and with cold and flu season upon us, it's up to all of us to help prevent the spread of communicable disease in our school communities. [B.C.'s Communicable Disease Guidelines for K-12 Settings](#) remain important to the ongoing protection from and prevention of respiratory illness, including colds and flus. The health and safety of our classrooms is a team effort – students, staff and visitors are urged to stay home if they are not feeling well or are experiencing symptoms, including fever and/or chills, recent onset of coughing or diarrhea:

- For uncontrolled fever: stay home until you do not have a fever and feel well enough to return to your regular activities.
- For undiagnosed vomiting and diarrhea: stay home until there has been 24 hours since your last episode.

In addition to staying home when you're sick, there are a few other ways you can keep yourself from getting sick and from spreading illness to others:

- Wash your hands regularly: Practise frequent hand hygiene to prevent the spread of germs and respiratory illness.
- Cover your mouth when you cough or sneeze. Cough and sneeze into your elbow instead of your hands.
- Get your recommended vaccinations. [Flu shots](#) are free to everyone in B.C. six months and older, and are available as a shot or a nasal spray. BC residents 6 months and older are also encouraged to get their [COVID vaccinations](#).

The decision to wear a mask or face covering is a personal choice for everyone. This choice will be supported and treated with respect in all our schools. Disposable masks will continue to be available at our sites for those that wish to use them. Staff, students or visitors may attend school if their symptoms are consistent with a previously diagnosed health condition such as seasonal allergies, or if their symptoms have improved to where they feel well enough to return to regular activities, and any fever has resolved without the use of fever-reducing medication (i.e. acetaminophen, ibuprofen). If a staff member, student or visitor develops symptoms of illness while at school and is unable to participate in regular activities, they should go home until their symptoms have improved. If you are unsure or concerned about your symptoms, please connect with your health care provider or call 8-1-1. For more information, check the [Provincial Communicable Disease Guidelines for K-12 Settings](#). *Thank you for continuing to keep our schools and workplaces healthy!*



Important Calendar Dates for 2022 – 2023

Monday, February 20	Family Day (no school)
Friday, February 24	Non-Instructional Day
Thursday, March 2	Term #2 Formal Reports
Thursday, March 9	Parent/Teacher Conferences
	Early Dismissal at 1:30 pm
Friday, March 10	Last Day of School prior to Spring Break

March 13 to March 24

Monday, March 27

Friday, April 7

Monday, April 10

Friday, May 5

Thursday, May 4

Monday, May 22

Monday, May 29

Thursday, June 29

Friday, June 30

Spring Break Holidays/School Closure Days

Back to School

Good Friday (no school)

Easter Monday Holiday (no school)

Non-Instructional Day

Interim #2 or Student Led

Victoria Day (no school)

Non-Instructional Day

Last Day of School

Term #3 Reports Go Home

Early Dismissal at 1:30 pm

Administrative Day /School Closed

Useful Links

Click on the links below to be taken to these websites:

- [Surrey School District Website](#)
- [BC Curriculum Overview](#)
- [CASEL](#) (Collaborative for Academic, Social, and Emotional Learning)
- Social Emotional Learning Resources: [Second Step](#), [MindUP](#), [EASE](#)