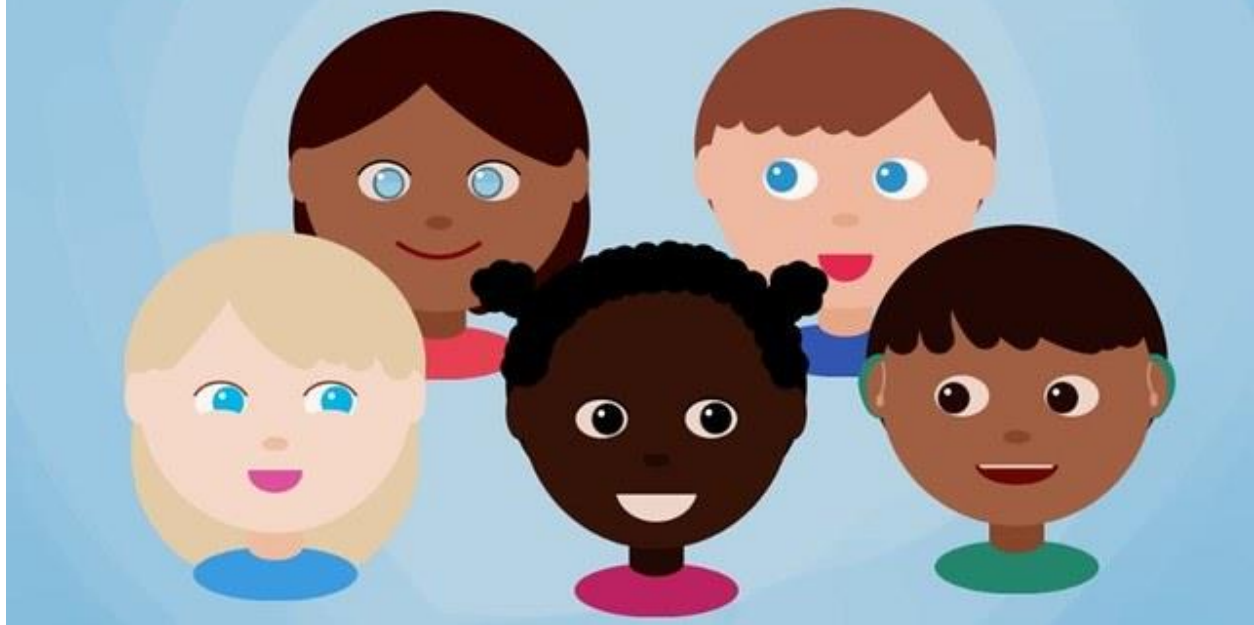


Be Yourself



Panorama Park Elementary

June 5 to 9, 2023

Monday, June 5, 2023

Tuesday, June 6, 2023

Wednesday, June 7, 2023

- Kindergarten Parent Orientation

Thursday, June 8, 2023

- Fire Drill

Friday, June 9, 2023

- Grade 7 Year End Fieldtrip -Waterslides

Moving?



Please inform the office as soon as possible if you are moving and/or transferring schools. This is an enormous help in preparing for September. We will miss you and wish you the very best in your new homes and schools. Take care.

Track & Field

Congratulations to the grade 3-7 track team on a successful track meet. They competed with positive attitudes, perseverance and respect for the other school teams. Thank you all for representing our school community in such a positive light! Well done team.

Student Placement - 2023 - 2024 School Year

In May, we begin the process for organizing and planning classes for next year. We work collaboratively with our team (classroom teachers, Intergation Support Teacher, Learning Support Teachers, School Counsellor, Child Youth Care Worker and administration) to determine the most suitable placement for your child based on the following criteria:

- Student intellectual, social and emotional development

- Learning styles and strengths of students
- Degree of independence
- Social compatibility
- Maintaining reasonable teacher-student ratios

If you have any information you would like to share about your child that will assist in this process, please share this information in a letter addressed to the administration.

Our goal is to create the most positive and effective learning environments possible for all students.

Protect Yourself And Others This Cold And Flu Season!



Nobody likes being sick, and with cold and flu season upon us, it's up to all of us to help prevent the spread of communicable disease in our school communities. [B.C.'s Communicable Disease Guidelines for K-12 Settings](#) remain important to the ongoing protection from and prevention of respiratory illness, including colds and flus. The health and safety of our classrooms is a team effort – students, staff and visitors are urged to stay home if they are not feeling well or are experiencing symptoms, including fever and/or chills, recent onset of coughing or diarrhea:

- For uncontrolled fever: stay home until you do not have a fever and feel well enough to return to your regular activities.
- For undiagnosed vomiting and diarrhea: stay home until there has been 24 hours since your last episode.

In addition to staying home when you're sick, there are a few other ways you can keep yourself from getting sick and from spreading illness to others:

- Wash your hands regularly: Practise frequent hand hygiene to prevent the spread of germs and respiratory illness.
- Cover your mouth when you cough or sneeze. Cough and sneeze into your elbow instead of your hands.

- Get your recommended vaccinations. [Flu shots](#) are free to everyone in B.C. six months and older, and are available as a shot or a nasal spray. BC residents 6 months and older are also encouraged to get their [COVID vaccinations](#).

The decision to wear a mask or face covering is a personal choice for everyone. This choice will be supported and treated with respect in all our schools. Disposable masks will continue to be available at our sites for those that wish to use them. Staff, students or visitors may attend school if their symptoms are consistent with a previously diagnosed health condition such as seasonal allergies, or if their symptoms have improved to where they feel well enough to return to regular activities, and any fever has resolved without the use of fever-reducing medication (i.e. acetaminophen, ibuprofen). If a staff member, student or visitor develops symptoms of illness while at school and is unable to participate in regular activities, they should go home until their symptoms have improved. If you are unsure or concerned about your symptoms, please connect with your health care provider or call 8-1-1. For more information, check the [Provincial Communicable Disease Guidelines for K-12 Settings](#). *Thank you for continuing to keep our schools and workplaces healthy!*



Important Calendar Dates for 2022 – 2023

Thursday, June 29

Last Day of School

Term #3 Reports Go Home

Early Dismissal at 1:30 pm

Friday, June 30

Administrative Day /School Closed

Useful Links

Click on the links below to be taken to these websites:

- [Surrey School District Website](#)
- [BC Curriculum Overview](#)
- [CASEL](#) (Collaborative for Academic, Social, and Emotional Learning)
- Social Emotional Learning Resources: [Second Step](#), [MindUP](#), [EASE](#)