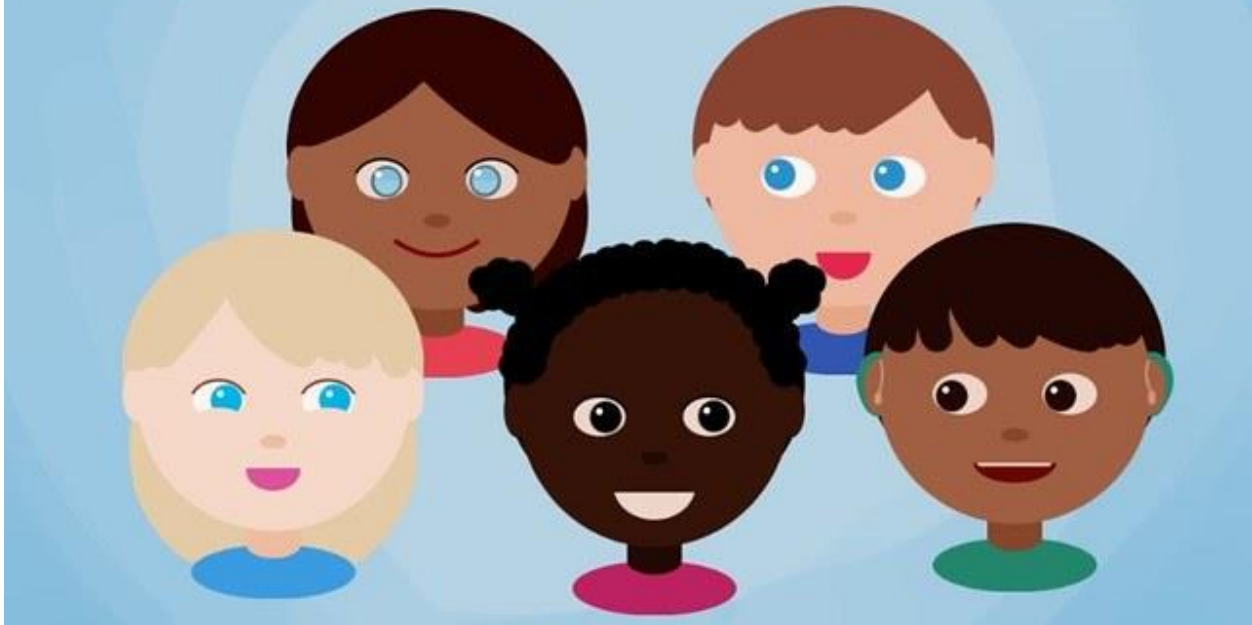


Be Yourself



Panorama Park Elementary

June 26 to 30, 2023

Monday, June 26, 2023

- West Community Park Field Trip - Divisions 18 & 19

Tuesday, June 27, 2023

- Grade 7 Leaving Ceremony
- West Community Park Field Trip - Divisions 9, 10 & 11

Wednesday, June 28, 2023

- Year End Assembly

Thursday, June 29, 2023

- Last Day of School Early Dismissal - 1:30 pm

Friday, June 30, 2023

- Administrative Day

A Word from Your Principal

Dear Panorama Park Parents/Guardians,

Panorama Park has been a most gracious, positive and caring place to be, and I am proud to be part of it. Our talented and dedicated staff have contributed their time and efforts to make our school a safe, caring place to be. Our parents have continued to be pillars of strength and support, and we are grateful to find ourselves in such a supportive community. Our students have shown kindness and generosity to one another. We are here because of them, and their sense of wonder, excitement to learn and to GROW is what keeps us all on our toes!

For all who will be returning or moving, may your summer adventures both near and far keep you safe and healthy.

All the Best,

Ms. J Dhaliwal

Staffing

We would like to welcome some new members to our community:

- Susan Soo LST (.2)
- Kirstin Headly Counsellor (.4)
- Linda Talstra Job share (.2) with Raveena Rangı
- Harneet Sangra Job Share (.6) Sonya Thiara/Kristin Schroeder/Rachel Umlas

Panorama Park Elementary School

Our first day of school is September 5 from 10:00 am -11:00 am for students in Grades 1-7. Kindergarten parents please look for the signs outside indicating where to check in for both Group A from 10:00 am to 10:30 am and Group B from 10:45 am -11:15am. Students do not need to bring anything specific on the first day. The purpose of this first day is to welcome families back and confirm attendance so we can begin the important process of organizing classes.

For the first day of school (Sept. 5), families (Grades 1 to 7) will find the grade group signs posted on doors outside the school. This line up area will be students gathering & pick up place each day until students are assigned to a specific teacher. A school map will be on display, at the front and back of the school to assist in finding your area. **Students will enter from the outside classroom doors only (not the office doors).**

Please send a packed lunch and a water bottle for the rest of the week. We have a reverse lunch model here: all children play outside 11:40 am to 12:05 pm then come in to eat their lunches from 12:05 pm to

12:25 pm. We are promoting and encouraging litterless lunches. Please use re-usable containers and send students with a water bottle rather than a juice box. We have water fillers in the hallway.

Room numbers will be posted on each exterior classroom door.

Kindergarten	Room 401	Front of the School
Grade 1	Room 306	Front of School
Grade 2	Room 501	Front of School
Grade 3	Room 309	West side of School
Grade 4	Room 204	East Side of School
Grade 5	Room 406	Front/East Side of School
Grade 6	Room 604	Back/East of School
Grade 7	Room 205	Back/West of School

BELL SCHEDULE

Morning Session	8:35 a.m. – 10:05 a.m.
Recess	10:05 a.m. – 10:20 a.m.
Morning Session	10:20 a.m. – 11:40 a.m.
Lunch	11:40 a.m. – 12:25 p.m.
Afternoon Session	12:25 p.m. – 2:27 p.m.

PSST (Protecting Surrey Schools Together)

The PSST (Protecting Surrey Schools Together) [website](#) has been a Surrey Schools innovation since 2007.

PSST is a website hosted by the Surrey School District with support from the Surrey RCMP and Surrey Crime Prevention.

Are you looking to report something anonymously?

If you've seen or heard something concerning, let us know.

Is someone or something bothering you or your friends at school? The PSST Report It form is available 24 hours a day 7 days a week and is a safe, secure and anonymous way to report issues of concern.

You can report anything that you have seen, heard or experienced if it relates to your safety or well-being or that of another student. This can happen at school, in the community or online.



Useful Links

Click on the links below to be taken to these websites:

- [Surrey School District Website](#)
- [BC Curriculum Overview](#)
- [CASEL](#) (Collaborative for Academic, Social, and Emotional Learning)
- Social Emotional Learning Resources: [Second Step](#), [MindUP](#), [EASE](#)