

# PINK SHIRT DAY ORDER FORM

In 2007, two Nova Scotia senior high school students witnessed a grade 9 boy being bullied for wearing a pink shirt. The next day, they bought 50 pink shirts and rallied together in pink, and Pink Shirt Day was born. **This year's PINK SHIRT DAY is on Wednesday February 26<sup>th</sup>, 2020.**

**If you would like to order an East Kensington Pink Shirt please fill in the order form below. Note sizes are in centimeters. Ordering a pink shirt is optional!**

We are a cashless school which means **all payments are made on-line by registering at <https://surreyschools.schoolcashionline.com/>**

**Please make payment online and return the completed order form by Monday February 10<sup>th</sup> to the school.**

Student Name: \_\_\_\_\_ Parent/Guardian: \_\_\_\_\_

Phone Number \_\_\_\_\_ Division: \_\_\_\_\_

*Enter desired quantity in the table below*

ADULT		YOUTH	
SIZE	QUANTITY	SIZE	QUANTITY
Adult S		Youth 2T	
Adult M		Youth 4T	
Adult L		Youth 6X	
Adult XL		Youth S	
Adult XXL		Youth M	
		Youth L	

TOTAL ADULT	<input type="text"/>	TOTAL YOUTH	<input type="text"/>
-------------	----------------------	-------------	----------------------

x \$8.00	<input type="text"/>	x \$7.00	<input type="text"/>
----------	----------------------	----------	----------------------

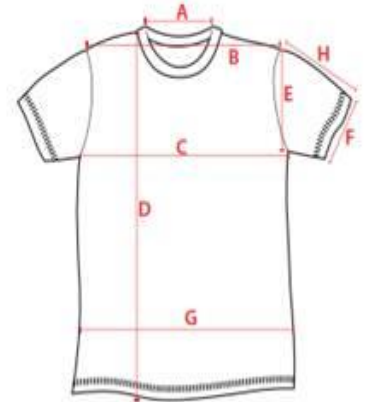
TOTAL AMOUNT PAID ONLINE(\$)	<input type="text"/>
	Receipt # <input type="text"/>



# T-Shirt Kids/Youth Measurements



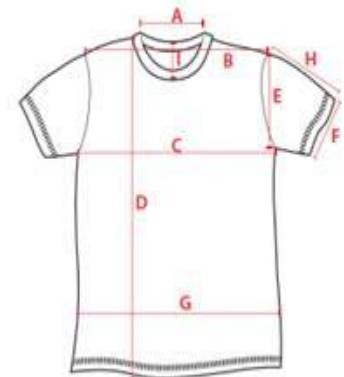
	2T	4T	6X	YS	YM	YL
<b>A: Neck (Inside)</b>	13	13.5	14	15	15.5	16
<b>B: Shoulder</b>	30	33	35	38	41	43
<b>C: Chest</b> (1" Below Armhole)	31	34	36	41	44	46
<b>D: Length HPS</b> (back of neck to bottom)	40	42	44	55	58	61
<b>E: Arm Hole Straight</b>	13	14.5	17	21	22	23
<b>F: Sleeve Opening</b>	11.5	12.5	13.5	16	16.5	17
<b>G: Body Width</b> (4" from bottom)	31.5	32.5	34.5	44.5	45.5	47
<b>H: Sleeve Length</b> (edge of E to F)	11	13	14.5	16	17.5	19



# Men's T-Shirt Measurements



	Small	Medium	Large	XL	XXL
<b>A: Neck</b>	15.5	16	16.5	17	17.5
<b>B: Shoulder</b>	47	49	51	53	56
<b>C: Chest</b>	54	56	58	60	63
<b>D: Length</b> (back of neck to bottom)	71	72.5	74	75.5	77
<b>E: Arm Hole</b>	23	24	25	26	27
<b>F: Sleeve Opening</b>	17	17.5	18	18.5	19
<b>G: Body Width</b> (4" from bottom)	52	54	56	59	62
<b>H: Sleeve Length</b> (edge of E to F)	21.5	22	22.5	23	25.5
<b>I: Neck Drop (inside)</b>	9	9.5	10	10.5	11



**PLEASE PAY ONLINE AND REMIT FORMS TO THE OFFICE BY MONDAY FEBRUARY 10<sup>th</sup>**