



TRUNK SHOW EXCLUSIVES

GET 50% OFF WHEN YOU SPEND \$50*

WHAT'S HER TYPE?

Maybe her style is a touch sparkle and a whole 'lotta edge. Match the gifts to the persona!



Crosby Link Necklace
\$69 \$138



Amity Drops
\$19.50 \$39



Eden Studs
\$13 \$26



Trinity Pendant
\$37 \$74



Lottie Necklace
\$27 \$54



Dorothy Pearl Studs
\$13 \$26



Chelsea Tech Wallet
\$32 \$64



Arabesque Cocktail Ring
\$17 \$34

THE UPPER EAST SIDER

THERE'S PREP IN HER STEP



Pavé Spear Pendant
\$32 \$64



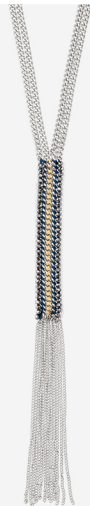
Somervell Necklace
\$32 \$64



Capri Pouch
\$19.50 \$39



Tribute Bracelet
\$19.50 \$39



Tessa Fringe Necklace
\$37 \$74



Light Bracelet
\$13 \$26



Goddess Teardrop Earrings
\$19.50 \$39



Tessa Bracelet
\$22 \$44



Mini Pearl Cross Necklace
\$27 \$54



Sparkle & Shine Necklace
\$12 \$24

Key to Your Heart Necklace
\$27 \$54

LADIES WHO BRUNCH

ALWAYS AHEAD OF TREND

LITTLE GLAM GIRL

stella & dot

*Offer available for Trunk Show guests with minimum purchase of \$50, before shipping and tax. Trunk Show Exclusive items not eligible toward \$50 minimum. Maximum of one style per customer, while supplies last. Offer available until Dec. 28, 2015, 9PM PT.