

# Panorama Ridge Supporting Online Learning

What to expect ...

What is expected ...



# Welcome back

- We know that parents and students may be feeling nervous or anxious about returning to Panorama Ridge for additional learning support while classes continue online.
- We have implemented a number of safety routines to help keep student and staff safe while in the building
- This document has been created to help students and parents to understand the changes we have made.

# By appointment

- Students must make arrangements with their teacher / schedule a time to get help.
- We are only allowing up to 6 students (maximum) in each classroom at one time.
- If a student does not have a scheduled appointment with a teacher and their schedule is full the student will be sent away.



# Health Check & Hand Hygiene

- Before arriving at school each day parents are required to assess their student's health.
- If students are exhibiting any cold or flu like symptoms they are NOT to come into the school.
- If a student develops symptoms while at school, they will be sent home.
- It is recommended that students wash their hands with soap and water when they arrive at school and before they leave.
- Students must cover their mouth and nose with their sleeve or a tissue when they sneeze.



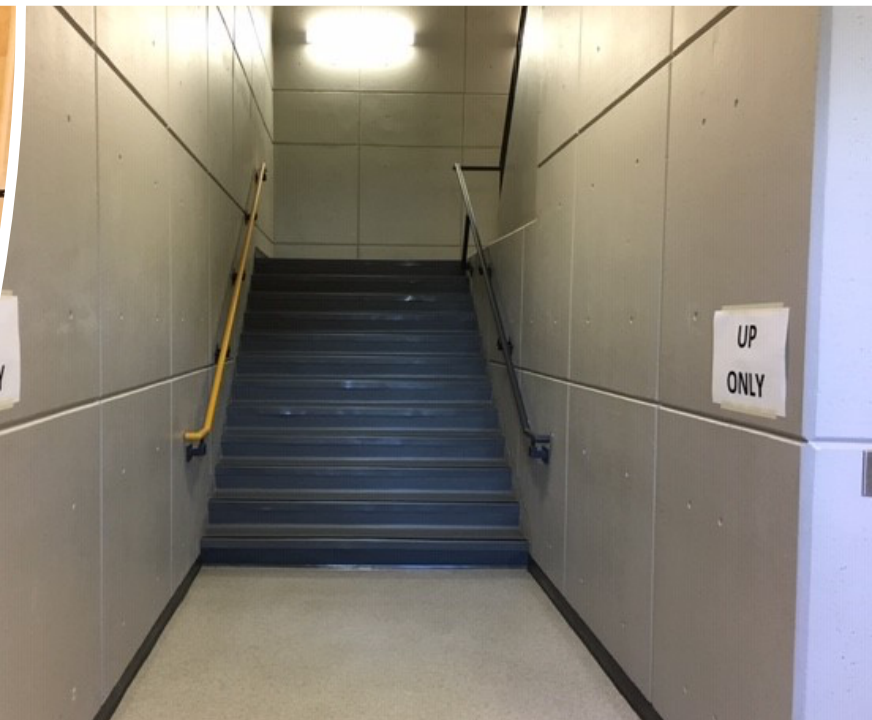


## Entrances & Exits

- Students will enter the school through two doors.
  1. The main front doors
  2. The door into the multi-purpose area from the back field.
- All other doors will be locked and for EXIT only.
- All doors are clearly marked.

## Stairwells will be one direction only

- Business Ed / Tech Ed near Plumbing , B207– DOWN
- Multi-Purpose area – UP
- C wing near Band C002, C102, C200 – DOWN
- C wing near Near Home Ec C006, C106, C204 – UP
- C wing at the far end near C210, C112, C010 – DOWN
- All staircases that lead directly to the outside are DOWN (beside C201, B202, B212)



# Classes

- Students are expected to be on time for their learning period.
- When walking to class students are to walk on the RIGHT side of the hall. This will help us to maintain a safe distance from people going the other direction.
- Immediately following their learning period students are to exit the building.
- Students are not permitted to hang out in the hallways or washrooms talking to friends at any time.



# Classes

- Upon arriving at their classroom students will be directed by their teacher where to sit.
- Students will be appropriately spaced out to ensure 2 metres distance between students.
- Students will use a desk & chair that has been sanitized. Once cleaned the chairs will be stacked or placed on top of a desk.
- At the end of the period students will push their chair into the desk – this will indicate the desk has been used by another student.





## Washrooms & Water Fountains

- The number of individuals in a washroom is to be limited. It is either 1 or 2 people depending on the size of the washroom. A maximum occupancy sign is posted outside of each washroom.
- Students are asked to wait outside the washroom if it full and to ensure 2 metres distance between themselves and the person in front of them.
- Water fountains are available to students. We encourage students to bring a water bottle from home.

# Final few pieces of information

- Student window – If students need help, they may come to the student office window. We have placed a table in front of the student office window to ensure appropriate distance is kept. Please stay behind the table.
- Students will not be permitted to use the student phone in the office. Please make pick up arrangements prior to attending.
- Thank you to everyone for abiding by these guidelines.