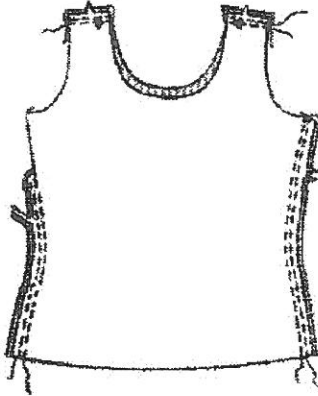


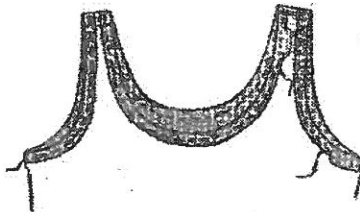
# Tank Top

(4198)

- 1) Stitch front to back at shoulders and sides, using a double stitched seam. Serge.



- 2) Finish neck and armhole edges with a 1.5 cm (5/8") **NARROW** hem.



- 3) Turn up a 3.2 cm (1 1/4") hem on lower edge of tank top. Stitch hem at 2.5 cm (1") and 2 cm (3/4"). Press.

