

# FLEETWOOD PARK SECONDARY SCHOOL

7940 – 156 Street, Surrey, British Columbia V3S 3R3 Ph: 604-597-2301 Fax: 604-597-6481 [www.surreyschools.ca/fltsec](http://www.surreyschools.ca/fltsec)

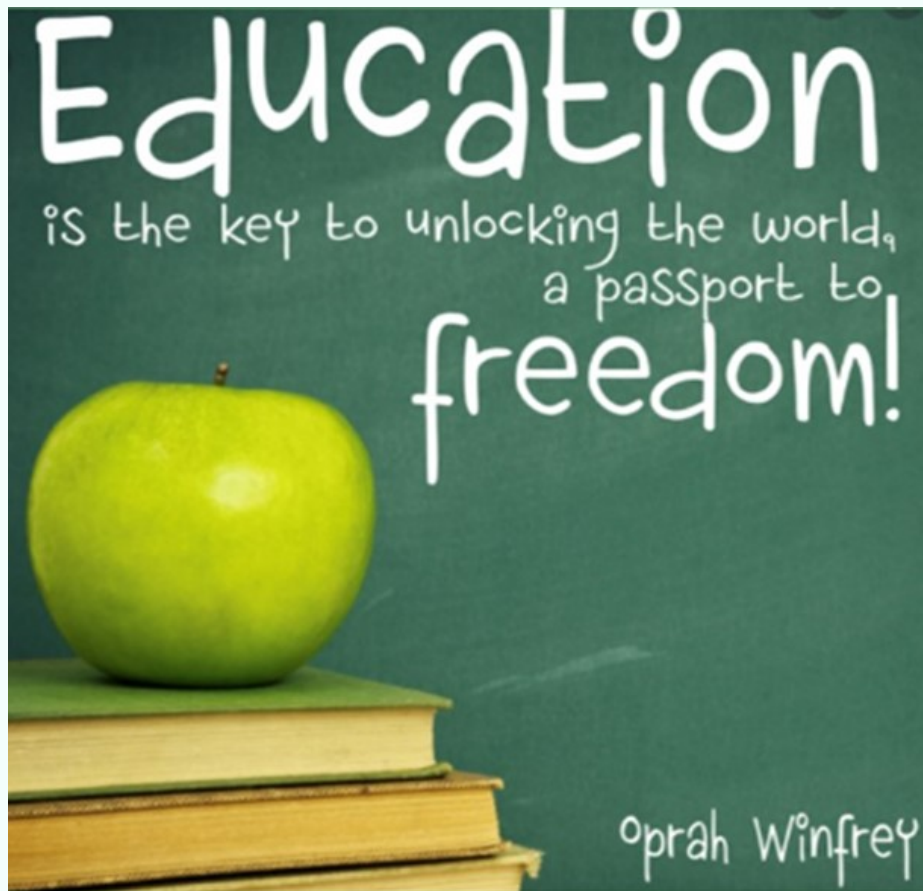


## THURSDAY REVIEW



February 25, 2021  
Edition: 22

### Quotation Of The Week:



**The Week Ahead:**

<b>Monday</b> , March 1, 2021	
<b>Tuesday</b> , March 2, 2021	School Culture Committee Mtg: 11:30am, TEAMS
<b>Wednesday</b> , March 3, 2021	
<b>Thursday</b> , March 4, 2021	Virtual Parent-Teacher Interviews 3:15-4:45pm, TEAMS
<b>Friday</b> , March 5, 2021	

**Upcoming Events**

March 4<sup>th</sup> – Parent-Teacher Interviews

March 15 – 19<sup>th</sup> – Spring Break

March 22<sup>nd</sup> – 26<sup>th</sup> – School Closure Days (Spring Break)

March 29<sup>th</sup> – Staff Meeting, 3:15pm, TEAMS

April 2<sup>nd</sup> – Good Friday Statutory Holiday

April 5<sup>th</sup> – Easter Monday – School Closure

May 7<sup>th</sup> – Non-instructional Day





**Quarter Schedule:**

<b>Q1 (Sept. 14 – Nov. 13)</b>	<b>Q2 (Nov. 16 – Jan. 29)</b>	<b>Q3 (Feb. 1 – Apr. 16)</b>	<b>Q4 (Apr. 19 – June 24)</b>
Block A	Block C	Block A	Block C
Block B	Block D	Block B	Block D



**SchoolAppointments.com**

Scheduling Parent Teacher Appointments  
Can be Easy for Everyone!

Appointment Date - Monday November 10th, 2008	
1:30 pm	<input type="checkbox"/>
1:40 pm	<input checked="" type="checkbox"/>
1:50 pm	<input type="checkbox"/>
2:00 pm	<input type="checkbox"/>
2:10 pm	<input type="checkbox"/>
2:20 pm	<input type="checkbox"/>
2:30 pm	<input type="checkbox"/>

**Parent Instructions for**

## **VIRTUAL PARENT / TEACHER INTERVIEWS**

**Thursday, March 04, 2021**

**3:15pm – 4:45pm**



**Meeting will be on Microsoft Teams**

You will NOT be able to access the program until  
**10:00 am on Wednesday, February 24, 2021**

**Parents can begin booking appointments from**  
**10:00 am on Wednesday, February 24 until 10:00 am on Friday, February 26**

**Teachers will contact you by email with your Virtual Meeting Link**

Go to our school appointments web site: <http://fleetwood.schoolappointments.com>

1. Under "CANADA" click on: Fleetwood Park Secondary, Surrey BC
2. Register for an account by clicking the "CLICK HERE TO REGISTER" menu tab (under the **LOGIN**) and filling in the on-line form. Choose a user id and password for yourself and then click the "Register Now" button.
3. Add your children into the system by clicking the "Add a Student" button. Click "Insert New" button to add more children.
4. Click the "date" icon beside each child's name to schedule appointments. Select the staff you wish to book appointments with and the "View Calendars" button. Use the "Ctrl" or "Command" key to select multiple staff to view the same time.





# Fleetwood Park Dry Grad 2021



The Fleetwood Park Dry Grad Committee is fundraising for the Grad Class of 2021 to be able to celebrate this milestone safely. We are hoping that at least some of the typical year end graduation traditions will be possible and are fundraising for a Dry Grad Celebration of some kind. Here are a few ways you can support the 2021 Grad Class:

## **Return-It Bottle Drive (Ongoing throughout school year)**

Drop off your UNSORTED cans & bottles to any Return-It Depot in the province. They must be in clear bags and quote phone # **604-OUR-FPSS/604-687-3777**

## **Purdy's Chocolates: ORDER DEADLINE Mar 6 for pickup on Mar 13th.**

Give the Easter Bunny a break this year! If you'd like to support us through purchasing some very sweet Easter gifts for friends, family and yourself, please click the link below:

<https://fundraising.purdys.com/1238712-82603>

After you've signed in you can buy our amazing chocolates or invite others to join and support our Fundraising Campaign.

## **Bottle Drive & Clothing Drive - Sunday April 11 from 12-3**

If you don't want to drop off your bottles and cans at the depot, save them up! Spring cleaning? Hold on to those bags full of clothes, belts, shoes or linens! Drive-thru drop-off and COVID protocols in place.

## **UPCOMING EVENTS:**

Neufelds Frozen Meats/Desserts – April 1-15 for orders and pickup Tuesday May 4

Chipotle Night Fundraiser (Date TBC when Covid restrictions allow)

Mother's Day Flower Baskets – sale dates TBD

Silent Auction – dates TBD

DO YOU HAVE ANY AUCTION ITEMS TO DONATE OR JUST WANT TO SUPPORT OUR GRADS? PLEASE EMAIL [drygradfleetwoodpark@gmail.com](mailto:drygradfleetwoodpark@gmail.com)

**Any support you can offer is much appreciated - thank you in advance for your support!**



## **In The News:**

### [Pink Shirt Day a reminder to spread kindness every day](#)

Wednesday, February 24, 2021

Students and staff across Surrey are celebrating [Pink Shirt Day](#), whether they're in a classroom or online as part of Surrey Blended. Every year, communities are encouraged to wear pink shirts on the last Wednesday of February to take a stand against bullying and kindness and care towards others. While the current health and safety protocols don't allow for the usual large Pink Shirt Day assemblies and events, Surrey schools are still finding numerous ways to show their support. And, as always, [teachers](#), support staff and district leaders demonstrate their support for anti-bullying by donning their own pink shirts and encouraging others to do the same.

Have a kind and safe Pink Shirt Day!

### [School environmental assessments in Surrey provide valuable health & safety insights](#)

Thursday, February 11, 2021

Comprehensive environmental assessments done at three different Surrey schools have highlighted common themes and practices that can support our schools in limiting the spread of COVID-19.

A [report](#) on the environmental assessments was presented to Surrey Board of Education trustees by Supt. Jordan Tinney at Wednesday's public board [meeting](#). To date, assessments have been completed at École Panorama Ridge Secondary, Cambridge Elementary and Newton Elementary.

Done in collaboration with Fraser Health, as well as district and school-based health and safety teams, the assessments included physical site visits, interviews with staff members and reviews of school procedures and protocols.

In addition to these three school assessments, subject-specific teams have also been brought together to review practices where there have been outbreaks or high numbers of cases. Most recently, such reviews were done for physical education (PE), music and band programs.

Common themes that emerged include:

The importance of students and staff completing [daily health checks](#) before attending school;

- Configuring classrooms to maximize physical distancing in the available space, not having students sit face-to-face and limiting contact and close proximity, particularly during
- physical exercise;
- Wearing masks, maintaining distance and not congregating in common areas; and during breaks;
- Carefully considering cleaning schedules so that students are not forced to be in close proximity while cleaning is done.





- Limiting numbers in staff rooms/washrooms, not sharing utensils/dishes, cleaning shared appliances after use, maintaining physical distance from colleagues.
- Students not sharing supplies and cleaning equipment that is shared or rotated (like musical instruments or PE equipment);
- Limiting visitors to schools as much as possible & clearly communicating sign-in procedures;
- The importance of students remaining in their cohorts, including before and after school and during breaks;
- Carefully considering cleaning schedules so that students are not forced to be in close.
- proximity while cleaning is done.

"We are continually learning and adapting through our experiences with this pandemic," said Tinney. "It's important that we're transparent during these processes – sharing what we've learned and how our protocols are evolving – so that best practices and expectations are clear and we can protect one another and stay healthy."

by Sheila Reynolds



# COLLABORATIVE ENVIRONMENTAL ASSESSMENTS



The safety and well-being of our students, families and staff remains our district's highest priority. We recognize the importance of face-to-face learning and are committed to ensuring our students can continue to learn as safely as possible by following all appropriate measures to limit the spread of illness.

These measures include working closely with public health to:

- Routinely review COVID-19 cases in our schools.
- Continuously assess district and school safety plans and the measures being taken to protect staff and students. This includes environmental assessments of individual schools collaboratively with Fraser Health, district Health and Safety staff, school-based Health and Safety committees and unions.

## WHAT DOES AN ENVIRONMENTAL ASSESSMENT ENTAIL?

Each assessment is a comprehensive review of the school, based on assessment criteria jointly developed with our health and safety team and Fraser Health.

Each assessment includes a physical review of the site, interviews with key staff members at the site, and a review of procedures and protocols that are being implemented at the school. If the school is still in operation, the assessment occurs while classes are in session, providing an opportunity for the health authority to learn about the practical reality of a school setting during this pandemic and how the provincial guidelines are being implemented in our schools. The in-session visit is also kept confidential so that the team visits unannounced.

## HOW MANY ASSESSMENTS HAVE BEEN CONDUCTED TO DATE?

To date, we have conducted three environmental assessments (École Panorama Ridge Secondary, Cambridge Elementary and Newton Elementary).

In addition, when there have been outbreaks or even large numbers of cases in specific areas or schools, we have gathered subject-specific teams together to review protocols. Most recently this was done for music, band and physical education (PE).

FOR MORE INFORMATION ON SURREY SCHOOLS COVID-19 RESPONSE VISIT [SURREYSCHOOLS.CA](https://surreyschools.ca)





## WHAT HAVE THESE ASSESSMENTS FOUND?

In each of the first three environmental assessments conducted in our district, there were strong common themes:



**DAILY HEALTH CHECKS** It is critical that staff and students conduct a health check every day prior to attending school. This check is a personal review of the signs and symptoms of COVID-19 and can help limit exposure and spread of illness. Anyone with symptoms should stay home and follow instructions on the checklist.



**CLASSROOM CONFIGURATIONS** It is critical that classrooms are organized in a manner that maximizes physical distancing to the greatest extent possible given the physical space available. This includes arranging desks so students are not face-to-face, not gathering a large number of students in one small area of the class for small group instruction, or having learning structures that require physical contact and/or students being in close proximity to each other, particularly when engaged in physical exercise. Seating plans should also be implemented.



**NO SHARED SUPPLIES** Each student should have their own set of supplies and classroom manipulatives (i.e. Lego, base 10, counters, etc.) should not be used unless they can be placed in individual bags that are labelled with a student's name. For items that are rotated, ensure they are out of service for 3 days prior to being used again. PE equipment and musical instruments should be assigned to specific cohorts for designated time frames before rotation and should be cleaned after use.



**THE IMPORTANCE OF COHORTS** It is critical that students remain in their cohorts, particularly during the time before schools starts, lunch breaks and after school. This has been particularly challenging in unsupervised areas such as school parking lots, school fields and neighbouring parks.



**PROTOCOLS FOR COMMON AREAS** Physical distancing in common areas, including hallways, can be difficult, particularly in schools that are over capacity. All staff and students need to maintain physical distance, use the exterior doors closest to their classrooms, consistently wear a mask in common areas and avoid congregating to the greatest extent possible.



**PROTOCOLS FOR STAFF ROOMS** All staff should continue following health and safety protocols in staff rooms. This includes wearing masks, maintaining physical distance from colleagues, limiting capacity in the staff room and washrooms, not sharing utensils or dishes and wiping down appliances after use (kettle, fridge handle, microwave, etc.).



**PROTOCOLS FOR PARENTS AND VISITORS** Schools should limit visitors as much as possible. When visitors must attend the site, schools should clearly communicate protocols for visitors and ensure that appropriate sign-in procedures are always followed (including for all itinerant staff). Schools should also encourage the wearing of masks (consistent with provincial guidelines) by anyone on school sites and prohibit congregating on school grounds.



**CLEANING SCHEDULES** The reviews identified that cleaning schedules could be more carefully considered. For example, cleaning occurs throughout the day and students are asked to evacuate the classrooms periodically throughout the day so cleaning staff can disinfect the classroom. This movement requires students to be in the hallway where they are in close proximity to each other while the classroom is disinfected. A balance needs to be struck between cleaning activities and overall attempts to maximize physical distancing.

## NEXT STEPS

The Surrey School District is committed to continuous learning. Each of these environmental assessments, as well as our district's ongoing work, has and will continue to inform our practice. This ongoing work includes:

- Review and discussions at each site/school-based Health and Safety committee, as well as the district's joint committee, which includes staff and key district partners.
- A comprehensive communications plan to share exposures and reiterate health and safety messaging.

- Regular meetings with Fraser Health to review current status, communications, and the steps we are taking to monitor the levels of exposures in our schools.
- Development of early intervention teams to examine how we can take proactive measures beyond our daily health and safety protocols.

Working to keep our schools safe and ensuring we are doing all we can to stop the spread of COVID-19 is now part of our daily routine.

FOR MORE INFORMATION ON SURREY SCHOOLS COVID-19 RESPONSE VISIT [SURREYSCHOOLS.CA](https://surreyschools.ca)



### 1. STAY HOME WHEN SICK

*All children and staff with common cold, influenza, COVID-19, or other respiratory diseases must stay home and self-isolate.*



### 2. HAND HYGIENE

*Everyone should wash their hands more often!*

*Thorough hand washing with plain soap and water for at least 20 seconds is the most effective way to reduce the spread of illness.*



### 3. RESPIRATORY AND PERSONAL HYGIENE

*Cover your coughs.*

*Do not touch your face.*

*No sharing of food, drinks, or personal items.*



### 4. PHYSICAL DISTANCING AND MINIMIZING PHYSICAL CONTACT

*Spread children out to different areas.*

*Take them outside more often.*

*Stagger lunch times.  
Incorporate individual activities.*

*Remind children, "Hands to Yourself!"*



### 5. CLEANING AND DISINFECTION

*Clean and disinfect frequently touched surfaces at least twice a day.*

*General cleaning of the centre should occur at least once a day.*

*Use common cleaning and disinfectant products.*



**Health and Safety:**

Please do not enter the workplace if you answer YES to any of the following questions:			
International Travel	Have you returned from travel outside Canada in the last 14 days?	YES	NO
Confirmed Contact	Have you been contacted by Public Health and identified as a confirmed contact of a person with COVID-19?	YES	NO
	Has Public health instructed you to self-isolate?	YES	NO
Are you experiencing any of the following <u>new</u> or <u>worsening</u> symptoms?			
Key Symptoms of Illness	Fever or Chills	YES	NO
	Cough	YES	NO
	Loss of sense of smell or taste	YES	NO
	Difficulty breathing	YES	NO
	Sore throat	YES	NO
	Loss of appetite	YES	NO
	Extreme fatigue or tiredness	YES	NO
	Headache	YES	NO
	Body aches	YES	NO
	Nausea or vomiting	YES	NO
Diarrhea	YES	NO	

\*Check BCCDC's [Symptoms of COVID-19](#) regularly to ensure the list is up to date.

If you answered "YES" to one of the questions included under 'Key Symptoms of Illness' (excluding fever), you should stay home for 24 hours from when the symptom started. If the symptom improves, you may return to the school/district site when you feel well enough. If the symptom persists or worsens, seek a health assessment.

If you answered "YES" to two or more of the questions included under 'Symptoms of Illness' or you have a fever, seek a health assessment. A health assessment includes calling 8-1-1, or a primary care provider like a physician or nurse practitioner. If a health assessment is required, you should not return to the school/district site until COVID-19 has been excluded and your symptoms have improved.

**When a COVID-19 test is recommended by the health assessment:**

- If the COVID-19 test is **positive**, you should stay home until you are told by public health to end self-isolation. In most cases this is 10 days after the onset of symptoms. Public health will contact everyone with a positive test.
- If the COVID-19 test is **negative**, you can return to the school/district site once symptoms have improved and you feel well enough. Symptoms of common respiratory illnesses can persist for a week or more. Re-testing is not needed unless you develop a new illness.
- If a COVID-19 test is recommended but is not done because you choose not to have the test, or you do not seek a health assessment when recommended, and your symptoms are not related to a previously diagnosed health condition, you should stay home from the school/district site until 10 days after the onset of symptoms, and then you may return if you are feeling well enough.

If a COVID-19 test is not recommended by the health assessment, you can return to the school/district site when symptoms improve and you feel well enough. Testing may not be recommended if the assessment determines that the symptoms are due to another cause (i.e. not COVID-19).

If you answered "YES" to questions 2 or 3, use the [COVID-19 Self-Assessment Tool](#) to determine if you should seek testing for COVID-19.

A health-care provider note (i.e. a doctor's note) should not be required to confirm the health status of any individual.

Revised by Health and Safety Department – February 12, 2021



## **"This Week at Fleetwood Park" – Principal's Message: February 22<sup>nd</sup> – 26<sup>th</sup>**

Happy Kindness Week Dragons!

This week our Fleetwood Park community has been celebrating kindness. Our Student Leadership class and Student Council have coordinated several activities that helped to "lift each other up" and reinforce our culture of inclusion, acceptance and diversity. It has been wonderful to read the messages of support and kindness posted around the school! Great thanks to Mr. England's Leadership class and Student Council for your important work.



On Monday we met with our staff for our monthly staff meeting. We learned more about adaptations and modifications as tools/strategies to support the success of all learners. We were also able to model the use of 'breakout rooms' as part of TEAMS functionality. The system worked as designed and we look forward to future opportunities to use this online meeting structure for both our staff and our students.

Our PAC met on Monday evening and welcomed local MLA for Surrey-Fleetwood, Mr. Jagrup Brar, to speak to the group regarding current and future enrollment at Fleetwood Park Secondary and plans for future expansion of the school. It was an informative presentation. Thank you to Mr. Brar for joining us.





On Tuesday morning we presented a video assembly to all students/staff regarding the Covid-19 Health and Safety Guidelines. It was an opportunity to thank all students and staff for their efforts over the past year, and to reinforce the requirement for continued vigilance. We are very fortunate to belong to such a responsible and supportive community – and the start of Quarter 3 was an opportune time to remind our Dragons of the importance of every individual effort. As I mentioned in the video, we have asked so much of our students/parents and staff over the past year... and we are optimistic that the future will allow us to return to a sense of normalcy, but in the meantime, we must continue to be safe and be smart!

Wednesday was Pink Shirt Day across British Columbia. We saw many students and staff wearing pink in support of this important anti-bullying message. Notes of positivity, posters, videos, t-shirts, and more... although we couldn't gather in person, we were still able to promote this message of kindness and inclusion. Thank you to all Dragons for your participation!



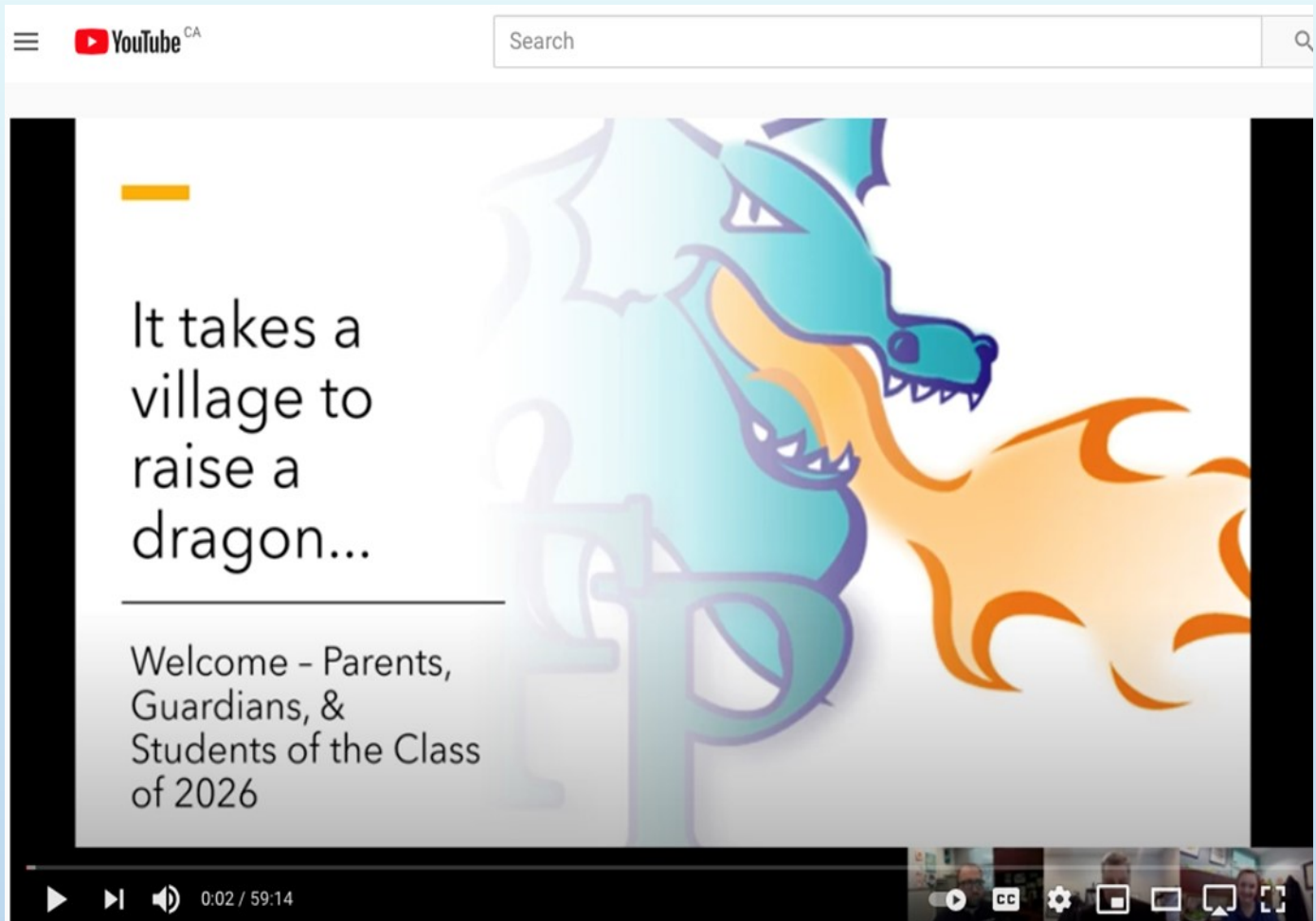




On Wednesday, the Extended Day Advisory Committee met again. We reviewed our previous work and discussed the current model at another Surrey Secondary school. This is important work. We will next seek feedback from our community as we begin to think about a possible model for the future. Please note: NO decision has been made regarding an Extended schedule for next year. We will continue to do all we can to avoid moving to an Extended schedule. However, it is important to have a plan in place in case of another enrollment increase in the Fall.



On Wednesday evening we uploaded this year's Grade 7 Parent Information Night presentation to YouTube. We had over 300 views in the first 12 hours. Grade 7 parents/guardians are encouraged to send us your questions on the attached form (link in the description of the video). Special thanks to Ms. Porter and our Grade 8 Leadership students and Mr. Gough and Ms. Sheridan and our Music students, and PAC Chair Ms. Lauer, for your special presentations as part of the video.



Today and tomorrow we will be presenting, again in online video format, our Grade 7 assemblies. We will be using TEAMS to visit each of our Associate school classrooms to meet next year's newest Dragons, discuss our Fleetwood Park caring community of excellence, and review course selection information. This promises to be an informative and fun chance to talk about the school and reassure next year's students that they are coming to a great place, and all will be okay!

We hope you have enjoyed Kindness Week at Fleetwood Park and have had a successful week of learning. Students – we remind you that now is a very important time. Work hard, ask questions, seek clarity and understanding through diligence and perseverance. You can do it! We are proud of you!

All the best for a happy Friday and a safe, relaxing weekend.

Ken

**Fleetwood Park Secondary Bell Schedule, 2020- 2021****Grade 8-9**

8:30 – 10:00	Block A	90 min	
10:00 – 10:10	Nutrition Break		
10:10 – 11:25	Block A	75 min	
11:25 – 12:15	Lunch		
12:15 – 2:55	Block B	160 min	
	Total	325 min	

**Grades 10,11,12**

8:30 – 9:00	Blended Time	30 min	
9:00 – 11:15	Block A	135 min	
11:15 – 12:15	Lunch		
12:15 – 2:25	Block B	130 min	
2:25 – 2:55	Blended Time	30 min	
	Total	325 min	

Time	Monday	Tuesday	Wednesday	Thursday	Friday
8:30 – 9:00	Blended Learning (online support)	Blended Learning (online support)	Blended Learning (online support)	Blended Learning (online support)	Blended Learning (online support)
9:00 – 11:15	Block A	Block A	Block A	Block A	Block A
11:15 – 12:15	Lunch	Lunch	Lunch	Lunch	Lunch
12:15 – 2:25	Block B – Online Whole class	Block B – Group 1 Face to Face	Block B- Group 2 Face to Face	Block B – Group 3 Face to Face	Block B – Online Whole class
2:25 – 2:55	Blended Learning (online support)	Blended Learning (online support)	Blended Learning (online support)	Blended Learning (online support)	Blended Learning (online support)



**Mission Statement:**

***“At Fleetwood Park Secondary we value excellence in education and strive to provide a learning environment where all students are encouraged to build successful futures.”***

