

# École Martha Currie Elementary



5811 - 184 St  
Surrey, BC  
V3S 4N2  
PH: 604-576-8551

Principal: Mr. B. Samra  
Vice-Principal: Ms. S. Banjac

Week at a Glance ~ Jan. 25 - Jan. 29, 2021

## Upcoming Events

### Monday

- Kindergarten Lottery online application opens

### Tuesday

- Spirit Day - Wild & Wacky

### Wednesday



### Thursday



### Friday



### IMPORTANT DATES

- February 15  
Family Day - No School
- February 19  
Pro-D Day - No School
- February 24  
Pink Shirt Day

## Just a reminder

If your child will be absent from school or late, please call the office at:

ph 604-576-8551

## Message from the Admin

There are reports that snow may be forthcoming. We're not sure if it will happen, but we figured this would be a good time to remind everyone that we do not allow snowballs during the school day. Safety is always our priority. If it does snow, please remind your child(ren). On the bad weather days, we want to reinforce the rule of visitors not driving into the Staff Parking Lot. We must continue to take care of the safety of all our students and staff.

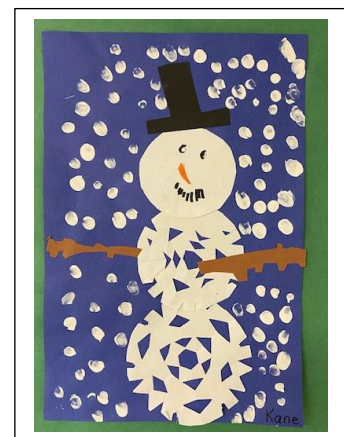
We are looking forward to another cultural assembly next week, as our students will get a chance to learn about French-Canadian culture and history.

Next week is also our next Spirit Day. It will be Wild and Wacky Day on Tuesday.

We want to give a big thank you to **Ms. S. Hannah** (who stepped in for Ms. McMurray during her Leave) for being so warm to all the students during her time in the office. We wish you the best in your next assignment. Ms. McMurray will be back on Monday.

Mr. B. Samra and Ms. S. Banjac  
(Principal) (Vice-Principal)

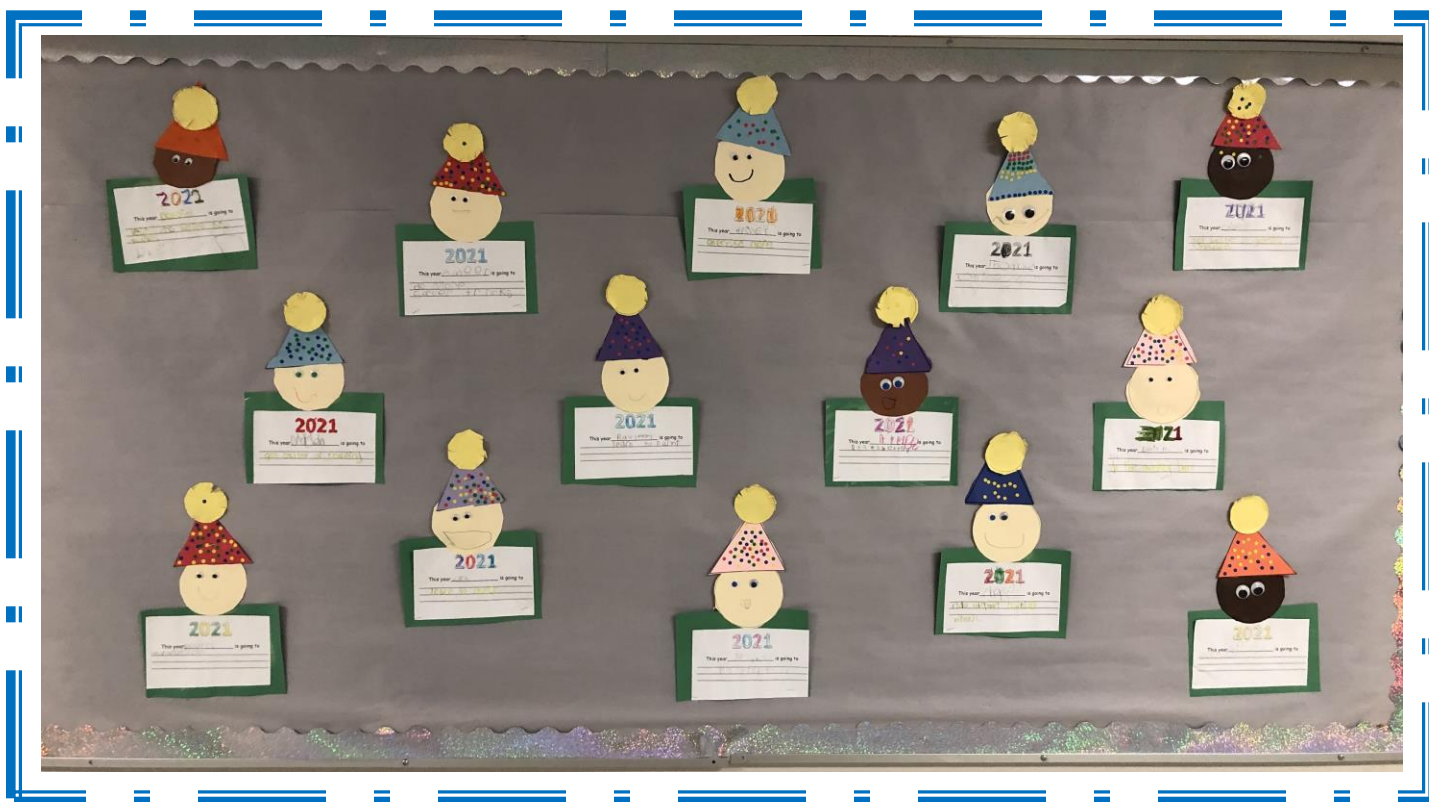
Div. 23



# Div. 15 - Les ours polaires



# Div. 29 - New Years Goals



Kindergarten Registration has started for the  
2021-2022 school year.

Please check the school's website to register online.  
Documents can be uploaded (preferably) or brought  
into the school (please call ahead to arrange a time).

Please see the attached Pink Shirt day order form.  
Orders are due by January 26, 2021



# PINK SHIRT DAY - FEBRUARY 24, 2021 SCHOOL ORDER FORM



Yes, we know...it's not a Pink Shirt this year!

Believe us when we tell you that a TON of thought went into this decision. We felt this year, more than ever, it was important to provide a shirt that would not only be worn one day a year, but one that would be worn again and again. Being white with our inspirational message of "Lifting Each Other Up", the 2021 Pink Shirt Day shirt will not only be your staple T all year round, but will also spread a message of kindness and empathy.

Student Name: \_\_\_\_\_

Division: \_\_\_\_\_

Phone Number: \_\_\_\_\_



| SIZE | A         | B      | C         |
|------|-----------|--------|-----------|
| S    | 18"       | 28"    | 15.63"    |
| M    | 20"       | 29"    | 17"       |
| L    | 22"       | 30"    | 18.5"     |
| XL   | 24"       | 31"    | 20"       |
| 2XL  | 26"       | 32"    | 21.5"     |
| 3XL  | 28"       | 33"    | 22.88"    |
| Tol. | +/- 0.75" | +/- 1" | +/- 0.75" |

Adult Size Chart

A - Width  
B - Height  
C- Sleeve Centre Back

| SIZE | A        | B      | C         |
|------|----------|--------|-----------|
| XS   | 14"      | 18"    | 11.5"     |
| M    | 16"      | 20.5"  | 13.5"     |
| L    | 17"      | 22"    | 14.5"     |
| XL   | 18"      | 23.5"  | 15.5"     |
| Tol. | +/- 0.5" | +/- 1" | +/- 0.75" |

Youth Size Chart

A - Width  
B - Height  
C- Sleeve Centre Back

**Adult Sizes:**

| Adult Sizes: | Quantity    |
|--------------|-------------|
| Adult S      | _____       |
| Adult M      | _____       |
| Adult L      | _____       |
| Adult XL     | _____       |
| Adult 2XL    | _____       |
| Adult 3XL    | _____       |
| Total Qty:   | _____       |
| Adult Total: | \$ _____    |
|              | \$8.95 each |

**Youth Sizes:**

| Youth Sizes: | Quantity    |
|--------------|-------------|
| Youth XS     | _____       |
| Youth S      | _____       |
| Youth M      | _____       |
| Youth L      | _____       |
| Youth XL     | _____       |
| Total Qty:   | _____       |
| Youth Total: | \$ _____    |
|              | \$7.95 each |

**\*\* 4 pc Value Bundles are an**

**Add-on item. You may order as many as you like, they just need to be purchased in addition to your T-shirts.**



Bundle includes 1 toque, 1 mask, 1 bracelet & 1 button

\$21.22 /bundle

**Grand Total Enclosed:** \$

Please submit cash or cheque (payable to Martha Currie Elementary)

**Please submit your form to the office by Tuesday, January 26, 2021**