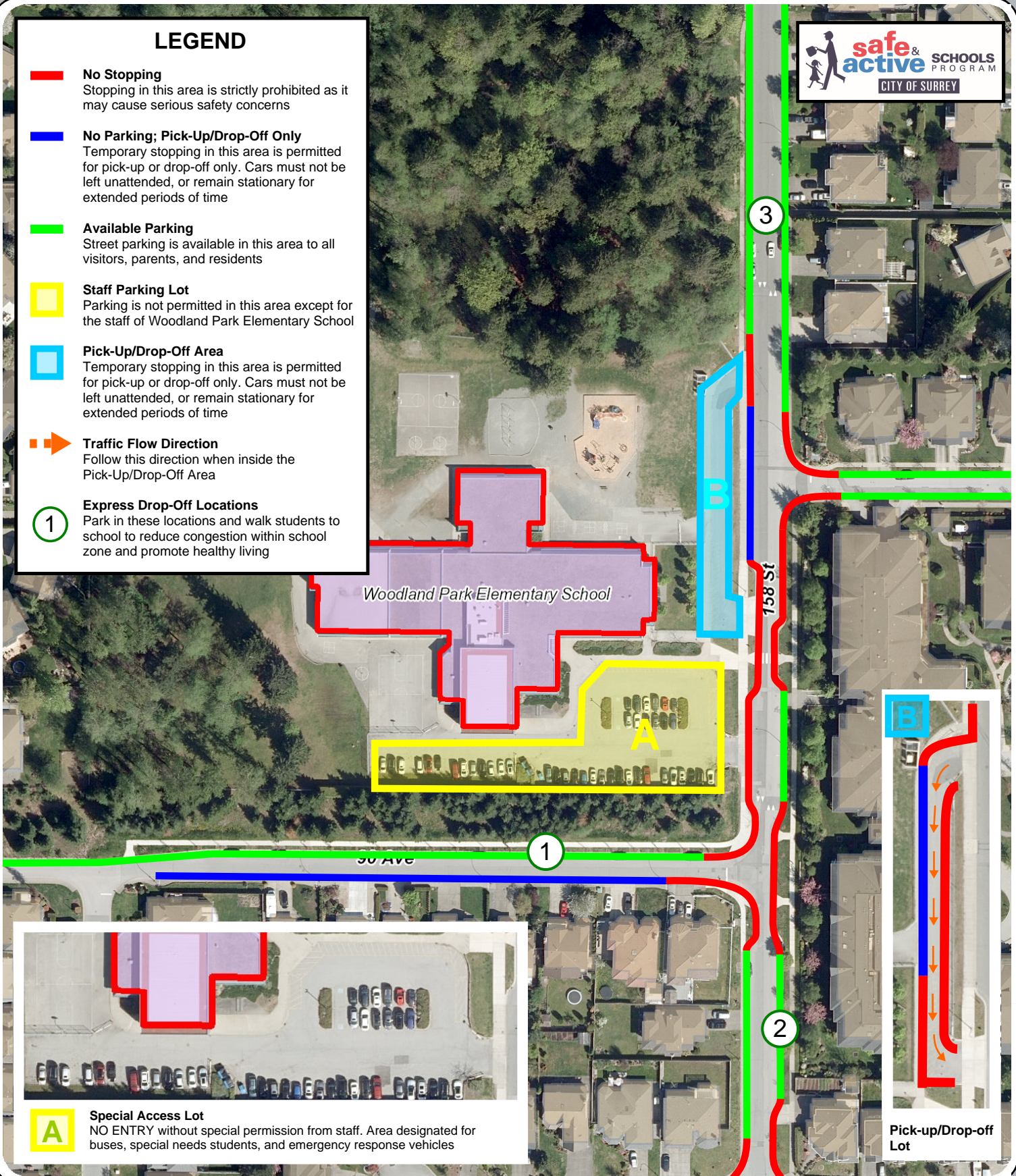


LEGEND

- **No Stopping**
Stopping in this area is strictly prohibited as it may cause serious safety concerns
- **No Parking; Pick-Up/Drop-Off Only**
Temporary stopping in this area is permitted for pick-up or drop-off only. Cars must not be left unattended, or remain stationary for extended periods of time
- **Available Parking**
Street parking is available in this area to all visitors, parents, and residents
- Staff Parking Lot**
Parking is not permitted in this area except for the staff of Woodland Park Elementary School
- Pick-Up/Drop-Off Area**
Temporary stopping in this area is permitted for pick-up or drop-off only. Cars must not be left unattended, or remain stationary for extended periods of time
- ➡ **Traffic Flow Direction**
Follow this direction when inside the Pick-Up/Drop-Off Area
- 1 **Express Drop-Off Locations**
Park in these locations and walk students to school to reduce congestion within school zone and promote healthy living



A

Special Access Lot

NO ENTRY without special permission from staff. Area designated for buses, special needs students, and emergency response vehicles

Pick-up/Drop-off Lot

Parking Regulations: Woodland Park Elementary School



The data provided is compiled from various sources and IS NOT warranted as to its accuracy or sufficiency by the City of Surrey.
This information is provided for information and convenience purposes only. Lot sizes, legal descriptions and encumbrances must be confirmed at the Land Title Office.